

2/14/06

## WILLOWBEND NINTH ADDITION

AN ADDITION TO WICHITA, SEDGWICK COUNTY, KANSAS  
S.W. 1/4, SEC. 29, T26S, R2ESTATE OF KANSAS }  
COUNTY OF SEDGWICK } SS

WE, PROFESSIONAL ENGINEERING CONSULTANTS, P.A., ENGINEERS AND SURVEYORS IN AFORESAID STATE AND COUNTY DO HEREBY CERTIFY THAT OF THIS 14<sup>th</sup> DAY OF FEBRUARY, 2006, WE HAVE SURVEYED AND PLATTED WILLOWBEND NINTH ADDITION, AN ADDITION TO WICHITA, SEDGWICK COUNTY, KANSAS, INTO LOTS, AND A BLOCK, THE SAME BEING A REPLAT OF AND DESCRIBED AS FOLLOWS:

A PORTION OF RESERVE A, WILLOWBEND FIRST ADDITION, AN ADDITION TO WICHITA, SEDGWICK COUNTY, KANSAS, MORE PARTICULARLY DESCRIBED AS FOLLOWS:  
BEGINNING AT THE NORTHERN MOST CORNER OF LOT 1, BLOCK 5, IN SAID WILLOWBEND FIRST ADDITION; THENCE BEARING S32°50'52"W, ALONG THE NORTHWESTERLY LINE OF SAID LOT 1, A DISTANCE OF 112.52 FEET; THENCE BEARING N54°33'37"W, A DISTANCE OF 124.52 FEET; THENCE BEARING N13°03'08"W, A DISTANCE OF 114.39 FEET; THENCE BEARING N52°11'13"E, A DISTANCE OF 80.00 FEET TO A POINT ON THE WESTERLY RIGHT OF WAY LINE OF MULBERRY; THENCE BEARING S37°48'47"E, ALONG SAID RIGHT OF WAY LINE, A DISTANCE OF 84.94 FEET TO THE PC OF A CURVE TO THE LEFT, HAVING A RADIUS OF 311.27 FEET; THENCE ALONG SAID CURVE TO THE LEFT, THROUGH A CENTRAL ANGLE OF 19°20'19", AN ARC DISTANCE OF 108.08 FEET TO THE POINT OF BEGINNING.

ALL PUBLIC EASEMENTS LYING WITHIN THE ABOVE DESCRIBED TRACT OF LAND ARE HEREBY VACATED AND REPLATED BY VIRTUE OF KSA 12-512(b) AMENDED.



JAMES R. BECKETT, R.L.S. NO. 832  
PROFESSIONAL ENGINEERING CONSULTANTS, P.A.

EASEMENTS FOR THE CONSTRUCTION AND MAINTENANCE OF PUBLIC UTILITIES ARE HEREBY GRANTED.

MINIMUM OPENINGS	ELEVATION (N.G.V.D.)	ELEVATION (City Datum)
BLOCK 1		
LOTS 1 AND 2	1380.15	192.75

A DRAINAGE PLAN HAS BEEN APPROVED FOR THIS PLAT. ALL DRAINAGE EASEMENTS AND RIGHTS-OF-WAY SHALL REMAIN AT ESTABLISHED GRADES AND UNOBSERVED TO ALLOW FOR THE CONVEYANCE OF STORM WATER, UNLESS MODIFIED WITH THE APPROVAL OF THE CITY ENGINEER.

KNOW ALL MEN BY THESE PRESENTS THAT WE, THE UNDERSIGNED PROPERTY OWNERS OF THE LAND AS ABOVE SET FORTH IN THE SURVEYOR'S CERTIFICATE, HAVE CAUSED THE LAND TO BE SURVEYED AND PLATTED INTO LOTS, AND A BLOCK, THE SAME TO BE KNOWN AS WILLOWBEND NINTH ADDITION, AN ADDITION TO WICHITA, SEDGWICK COUNTY, KANSAS.

OWNER:  
NUCKOLLS GOLF, INC.

*Rick Nuckolls*  
RICK NUCKOLLS, GENERAL MANAGER

STATE OF KANSAS }  
COUNTY OF SEDGWICK } SS

THIS INSTRUMENT WAS ACKNOWLEDGED BEFORE ME ON THIS 14<sup>th</sup> DAY OF February, 2006, BY RICK NUCKOLLS, GENERAL MANAGER OF NUCKOLLS GOLF, INC.

*Mary A. Farrar*  
MARY A. FARRAR, Notary Public - State of Kansas  
My App'l. Expires 2/27/08

WE, EQUITY BANK, HOLDER OF A MORTGAGE ON THE ABOVE DESCRIBED PROPERTY, DO HEREBY CONSENT TO THE PLATING OF WILLOWBEND NINTH ADDITION, AN ADDITION TO WICHITA, SEDGWICK COUNTY, KANSAS.

*Timothy L. Binns*  
TIMOTHY L. BINNS, EXECUTIVE VICE PRESIDENT

STATE OF KANSAS }  
COUNTY OF SEDGWICK } SS

THIS INSTRUMENT WAS ACKNOWLEDGED BEFORE ME ON THIS 14<sup>th</sup> DAY OF February, 2006, BY TIMOTHY L. BINNS, EXECUTIVE VICE PRESIDENT OF EQUITY BANK.

*Tania Lewis*  
TANIA LEWIS, Notary Public  
My App'l. Expires June 9, 2007

WE, SMALL BUSINESS ADMINISTRATION, HOLDER OF A MORTGAGE ON THE ABOVE DESCRIBED PROPERTY, DO HEREBY CONSENT TO THE PLATING OF WILLOWBEND NINTH ADDITION, AN ADDITION TO WICHITA, SEDGWICK COUNTY, KANSAS.

*Linda C. McMaster*  
LINDA C. MCMASTER, DISTRICT COUNCIL  
SMALL BUSINESS ADMINISTRATION

STATE OF KANSAS }  
COUNTY OF SEDGWICK } SS

THIS INSTRUMENT WAS ACKNOWLEDGED BEFORE ME ON THIS 14<sup>th</sup> DAY OF February, 2006, BY LINDA C. MCMASTER, DISTRICT COUNCIL OF SMALL BUSINESS ADMINISTRATION.

*Sherryl L. Clary*  
SHERRYL L. CLARY, Notary Public  
My Appointment Expires: 12-17-2007

SHERRYL L. CLARY  
Notary Public - State of Kansas  
My App'l. Expires 12-16-2007

THIS PLAT OF WILLOWBEND NINTH ADDITION HAS BEEN SUBMITTED TO AND APPROVED BY THE WICHITA-SEDGWICK COUNTY METROPOLITAN AREA PLANNING COMMISSION, WICHITA, KANSAS.

DATED THIS \_\_\_\_\_ DAY OF \_\_\_\_\_, 2006.

WICHITA-SEDGWICK COUNTY METROPOLITAN AREA PLANNING COMMISSION

HAROLD L. WARNER, JR., CHAIR

JOHN L. SCHLEGEL, SECRETARY

REVIEWED IN ACCORDANCE WITH K.S.A. 58-2005 ON THIS \_\_\_\_\_ DAY OF \_\_\_\_\_, 2006.

TRICIA L. ROBELLO, LS #1246  
DEPUTY COUNTY SURVEYOR  
SEDGWICK COUNTY KANSAS

THIS PLAT IS APPROVED AND ALL DEDICATIONS SHOWN HEREON, IF ANY ARE ACCEPTED BY THE CITY COUNCIL OF THE CITY OF WICHITA, KANSAS, THIS \_\_\_\_\_ DAY OF \_\_\_\_\_, 2006.

CARLOS MAYANS, MAYOR

KAREN SUBLETT, CITY CLERK

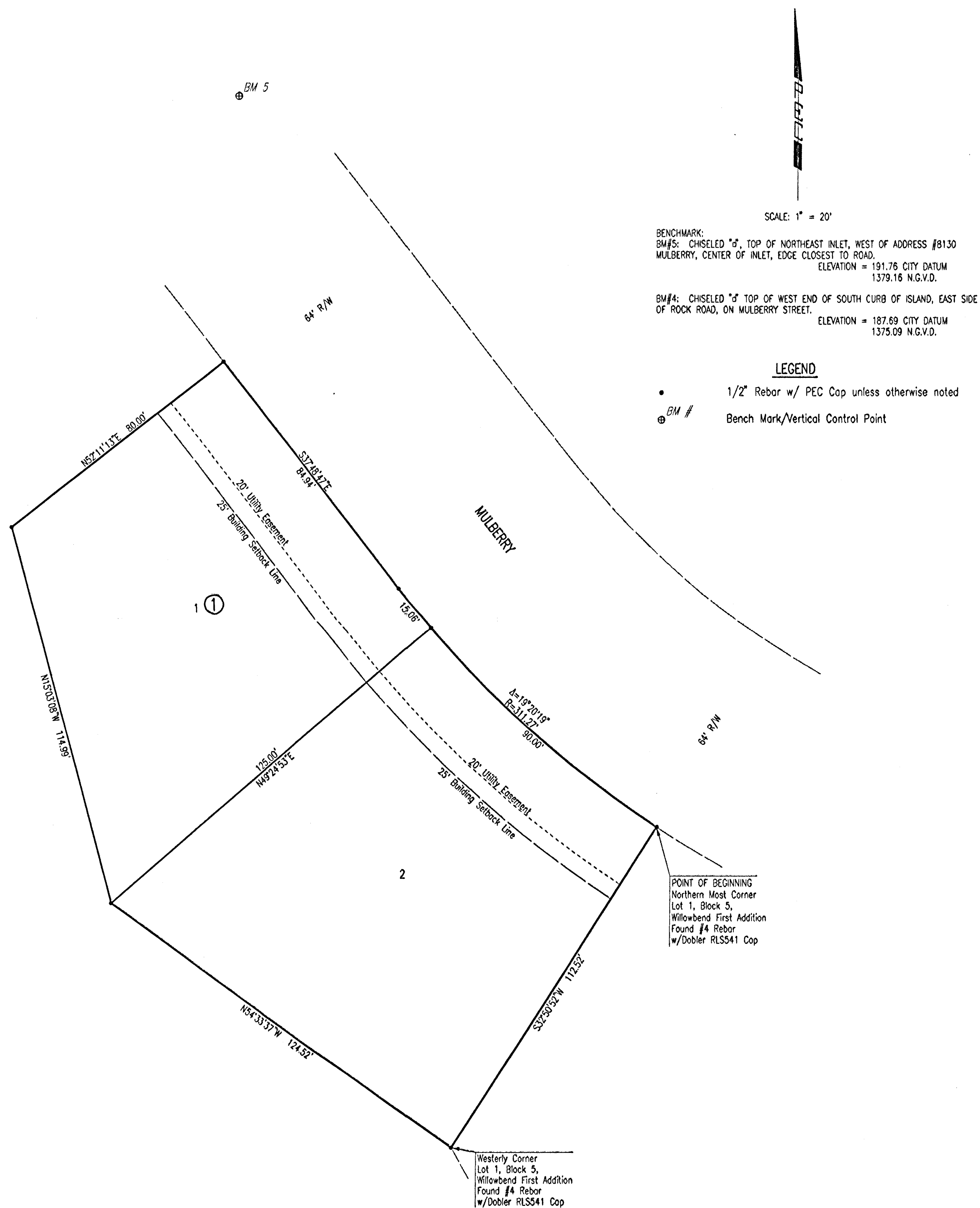
ENTERED ON TRANSFER RECORD THIS \_\_\_\_\_ DAY OF \_\_\_\_\_, 2006.

DONALD BRACE, COUNTY CLERK

THIS IS TO CERTIFY THAT THIS INSTRUMENT WAS FILED FOR RECORD IN THE REGISTER OF DEEDS OFFICE AT \_\_\_\_\_ M., ON THE \_\_\_\_\_ DAY OF \_\_\_\_\_, 2006.

BILL MEER, REGISTER OF DEEDS

TONYA BUCKINGHAM, DEPUTY



BENCHMARK:  
BM#5: CHISELED "d", TOP OF NORTHEAST INLET, WEST OF ADDRESS #8130 MULBERRY, CENTER OF INLET, EDGE CLOSEST TO ROAD.  
ELEVATION = 191.76 CITY DATUM  
1379.18 N.G.V.D.

BM#4: CHISELED "d" TOP OF WEST END OF SOUTH CURB OF ISLAND, EAST SIDE OF ROCK ROAD, ON MULBERRY STREET.  
ELEVATION = 187.69 CITY DATUM  
1375.09 N.G.V.D.

## LEGEND

- 1/2" Rebar w/ PEC Cap unless otherwise noted
- BM # Bench Mark/Vertical Control Point



Professional Engineering Consultants, P.A.  
303 S. TOPEKA • WICHITA, KANSAS 67202  
316-262-2691 • FAX 316-262-3003