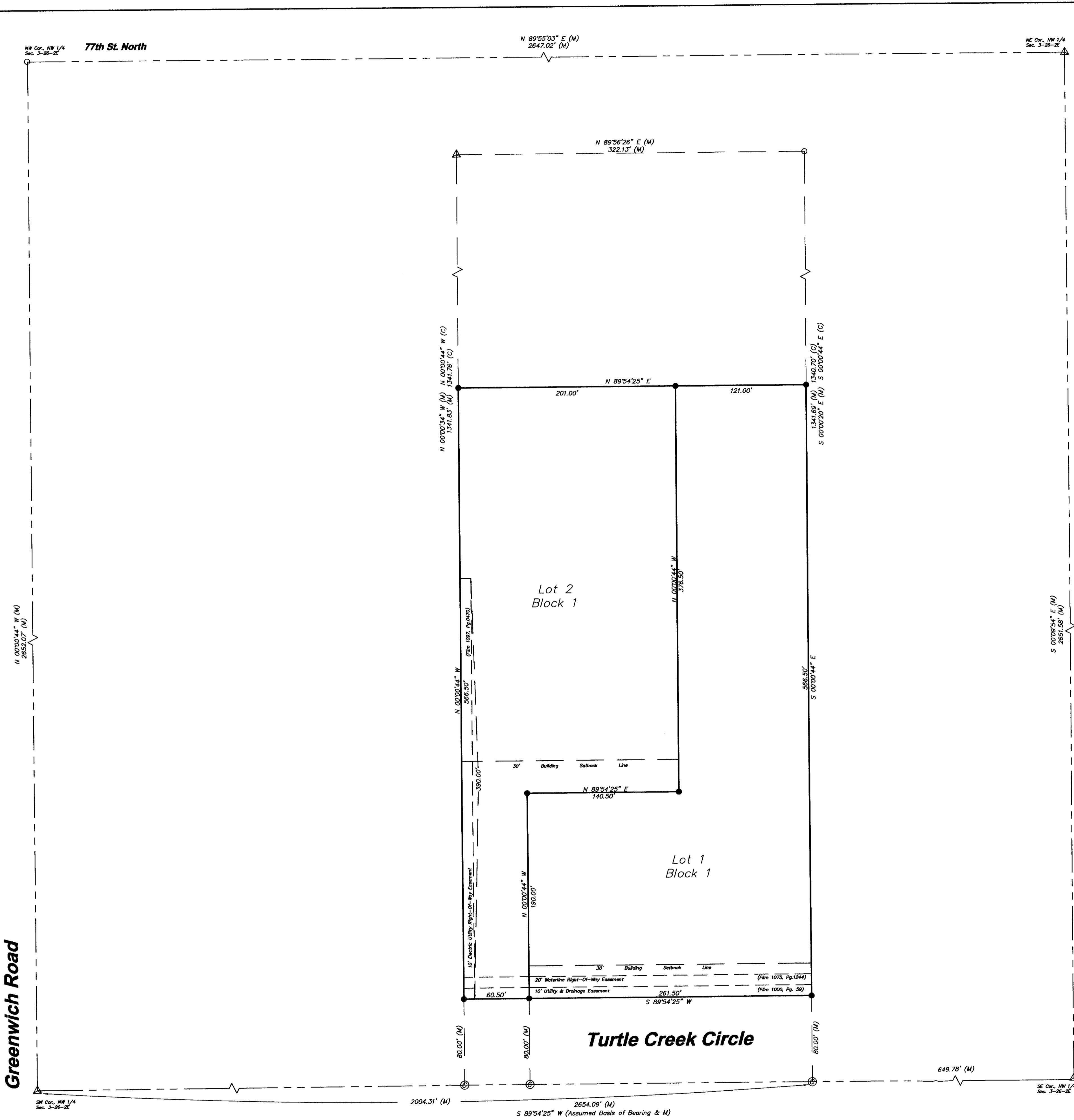


# JUST ADDITION to SEDGWICK COUNTY, KANSAS



**Abbott and Survey**  
 520 S. Holland, Ste. 103 Wichita, KS 67209  
 Ph. 316.262.2262 Fax 316.262.2268  
 surveyors@benchmarks.net

**LEGEND:**  
 (M) = Measured or Calculated from Measurement  
 ● = Set 1/2" Rebar w/ LS#1340 CAP  
 ▲ = Found 3/4" Iron Pipe  
 ⊙ = Calculated Point  
 ○ = Found 1/2" Iron Pipe

**CERTIFICATE OF SURVEY**

State of Kansas )  
 ) SS  
 County of Sedgwick )  
 I, Chad R. Abbott, the undersigned registered land surveyor of the State of Kansas, do hereby certify that the following described tract of land was surveyed on December 18, 2015. The survey was made by me or under my direct supervision and the accompanying plat "JUST ADDITION TO SEDGWICK COUNTY, KANSAS", is a true and correct exhibit of the property surveyed, described as follows:  
 Beginning at a point 2004.31 feet East of the SW Corner of the Northwest Quarter of Section 3, Township 26 South, Range 2 East of the 6th P.M., Sedgwick County, Kansas, the South line of said Northwest Quarter having an assumed bearing of N 89°54'25" E; thence S 89°54'25" W along said South line, a distance of 322.00 feet; thence N 00°00'44" W parallel with the West line of said Northwest Quarter, a distance of 646.5 feet; thence N 89°54'25" E parallel with the South line of said Northwest Quarter, a distance of 322.00 feet; thence S 00°00'44" E parallel with said West line, a distance of 646.5 feet to the Point of Beginning.

Chad R. Abbott L.S. #1340

**OWNER'S CERTIFICATE**

State of Kansas )  
 ) SS  
 County of Sedgwick )  
 Know all men by these presents that we the undersigned owners of the land as above set forth in the Surveyor's Certificate, have caused the same to be surveyed and plotted into two lots, a block and a street. The same to be known as "JUST ADDITION TO SEDGWICK COUNTY, KANSAS"; The 80' Street Right-of-Way along Turtle Creek Circle is hereby dedicated to and for the use of the public. A drainage plan has been developed for the plat and all drainage easements, right-of-ways, or reserves shall remain at established grades or as modified with the approval of the applicable City or County Engineer, and will remain unobstructed to allow for the conveyance of stormwater.

Janet Cusick Jost, Trustee of Gary D. Jost Revocable Trust  
 Betty L. Goeller

**NOTARY CERTIFICATE**

State of Kansas )  
 ) SS  
 County of Sedgwick )  
 BE IT REMEMBERED, that on this \_\_\_\_ day of \_\_\_\_\_, 2015, before me the undersigned, a Notary Public in and for the County and State aforesaid, came Janet Cusick Jost, Trustee of Gary D. Jost Revocable Trust and Betty L. Goeller, to me personally known to be the same persons who executed the foregoing instrument of writing and duly acknowledged the execution of the same.  
 IN WITNESS WHEREOF, I have hereunto set my hand and affixed my official seal, the day and year above written.  
 My Appointment Expires: \_\_\_\_\_

**PLANNING COMMISSION CERTIFICATE**

State of Kansas )  
 ) SS  
 County of Sedgwick )  
 This plat of "JUST ADDITION TO SEDGWICK COUNTY, KANSAS" has been submitted to and approved by the Wichita-Sedgwick County Metropolitan Area Planning Commission, Wichita, Kansas.  
 Dated this \_\_\_\_ day of \_\_\_\_\_, 2016.  
 WICHITA-SEDGWICK COUNTY METROPOLITAN PLANNING COMMISSION  
 Carol Chapman Neugent, Chairman  
 Dale Miller, Secretary

**COUNTY COMMISSIONERS CERTIFICATE**

State of Kansas )  
 ) SS  
 County of Sedgwick )  
 This plat approved by and all dedications shown hereon, if any, accepted by the Board of County Commissioners of Sedgwick County, Kansas, this \_\_\_\_ day of \_\_\_\_\_, 2016.  
 James H. Howell, Fifth District, Chairman  
 Kelly B. Arnold, County Clerk

**TRANSFER RECORD**

State of Kansas )  
 ) SS  
 County of Sedgwick )  
 Entered on transfer record this \_\_\_\_ day of \_\_\_\_\_, 2016  
 Kelly B. Arnold, County Clerk

**REGISTER OF DEEDS**

State of Kansas )  
 ) SS  
 County of Sedgwick )  
 This is to certify that this instrument was filed for record in the Register of Deeds office this \_\_\_\_ day of \_\_\_\_\_, 2016 at \_\_\_\_ o'clock \_\_\_\_ and is duly recorded.  
 Tanya Buckingham, Register of Deeds  
 Judy J. Paget, Deputy

**COUNTY SURVEYOR**

State of Kansas )  
 ) SS  
 County of Sedgwick )  
 Reviewed in accordance with K.S.A. 58-2005 on this \_\_\_\_ day of \_\_\_\_\_, 2015.  
 Tricia L. Robello #1246  
 Deputy County Surveyor  
 Sedgwick County, Kansas

