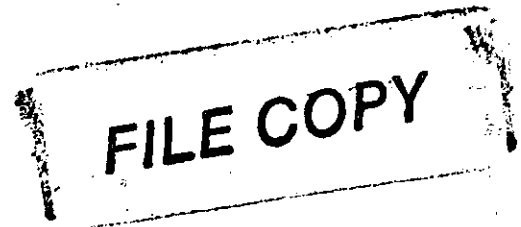




Wichita-Sedgwick County Metropolitan Area Planning Department

August 16, 2000

Underground Vault & Storage
c/o Jim Ontjes
P.O. Box 1723
Hutchinson, KS 67501



Re: Administrative Adjustment BZA2000-00032: An administrative adjustment to reduce the parking requirements for a business expansion in the "GI" General Industrial zoning district by 9 percent.

Legal Description: Lots 1, 2, 4, & 6, Block A, Santa Fe Industrial District Addition, Wichita, Sedgwick County, Kansas. Generally located at the southeast corner of 33rd Street North and St. Francis (707 E. 33rd Street North).

Dear Mr. Ontjes:

We have reviewed your request for an Administrative Adjustment to allow a 9% reduction (35 spaces to 32 spaces) in the parking requirements for your planned expansion of the building on the aforementioned lots for the purpose of record storage (warehousing). You state in your application that this facility will employ 8 persons, making the requirement of 35 spaces quite excessive. Your site plan shows 32 spaces, which you feel will be more than adequate to support your employees and limited visitor and customer activity.

The Unified Zoning Code allows an Administrative Adjustment that would reduce the parking requirements by up to 25% for business services and remodeling/expansion projects. We find that the reduction of parking requirements meets the four conditions required by Section V-1.6 of the Unified Zoning Code as set out below:

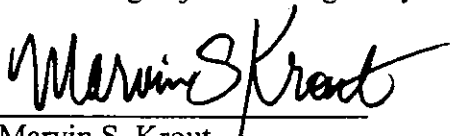
- 1) Impact on safety and convenience of vehicular and pedestrian circulation: This request is for off-street parking for a warehousing business that employs far fewer employees than the number of spaces required by City Code. Public vehicular and pedestrian circulation will not be affected.

- 2) Impact on existing uses in surrounding areas: There should be no negative impact on the existing uses in surrounding areas as a result of the reduction in parking spaces as there should be no overflow parking requirements for customers or employees at this location.
- 3) Compatibility with existing or permitted uses on abutting sites: The reduction in parking requirements is within allowable adjustments and will not detract from the existing commercial or industrial uses.
- 4) Effect on public health, safety or welfare: There will be no encroachment into public utility easements or right-of-way, therefore, there should not be a negative impact on the public health, safety or welfare nor will properties or improvements in the vicinity be materially injured.

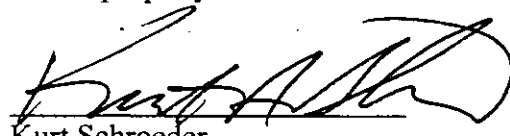
Our signatures below indicate that an Administrative Adjustment to allow the reduction in the parking requirements by 9% (from 35 spaces to 32 spaces) for the aforementioned property is hereby granted, subject to the following conditions:

- 1) The site shall be developed in general conformance with the site plan submitted as part of this application.
- 2) All parking areas shall be paved and marked.
- 3) The maximum number of employees permitted on-site shall not exceed 25 at any one time. If additional employees are required, additional parking spaces shall be provided.
- 4) Any violation of these conditions shall render the Administrative Adjustment null and void.

The zoning adjustment sign may now be removed from the property.



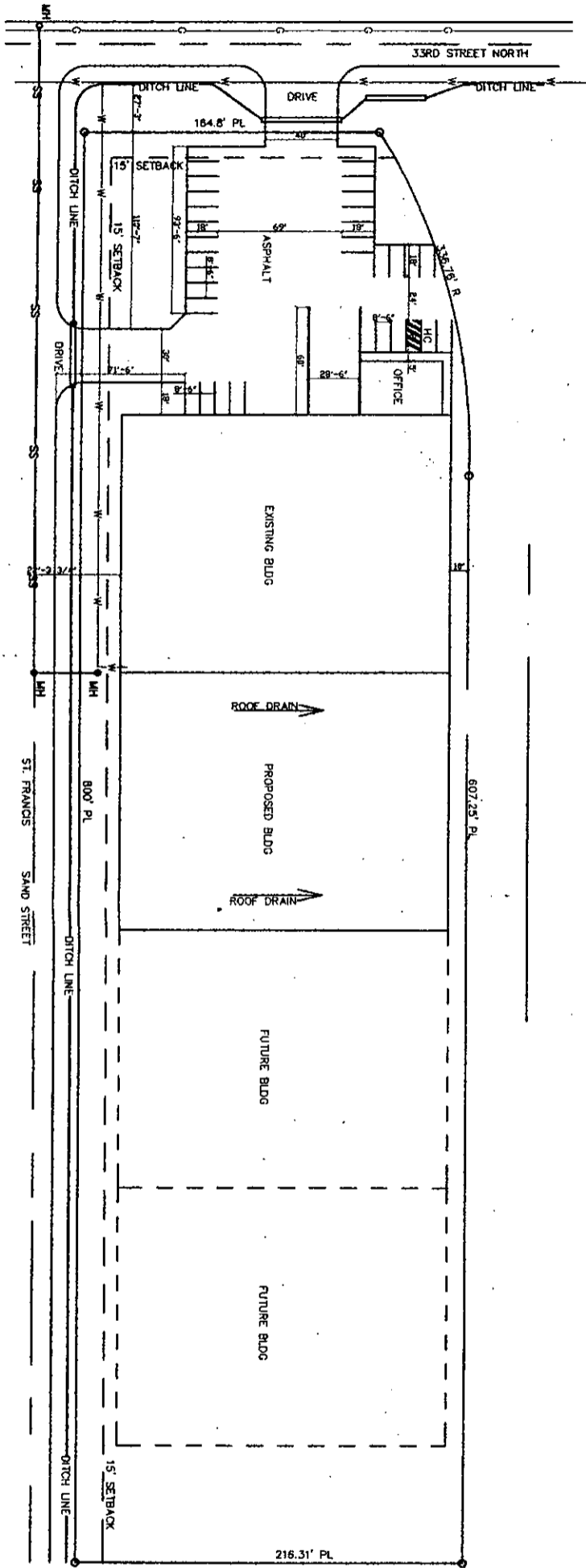
Marvin S. Krout
Director of Planning



Kurt Schroeder
Superintendent of Central Inspection

MK/KS/lv

cc: Kurt Schroeder, Office of Central Inspection
Paul Hays, Office of Central Inspection
Randy Sparkman, Office of Central Inspection
J.R. Cox, Office of Central Inspection
Garrett H. Addison, Smith Construction Company, P.O. Box 13213, Wichita, KS 67213



DATA BLOCK	
SITE	BUILDING
GENERAL DESCRIPTION	FLOOR AREA
LOT 1-3-4-6	EST. BY ARCH
BLDG A	TYPE OF BLDG
BLDG B	TYPE OF BLDG
BLDG C	TYPE OF BLDG
BLDG D	TYPE OF BLDG
BLDG E	TYPE OF BLDG
BLDG F	TYPE OF BLDG
BLDG G	TYPE OF BLDG
BLDG H	TYPE OF BLDG
BLDG I	TYPE OF BLDG
BLDG J	TYPE OF BLDG
BLDG K	TYPE OF BLDG
BLDG L	TYPE OF BLDG
BLDG M	TYPE OF BLDG
BLDG N	TYPE OF BLDG
BLDG O	TYPE OF BLDG
BLDG P	TYPE OF BLDG
BLDG Q	TYPE OF BLDG
BLDG R	TYPE OF BLDG
BLDG S	TYPE OF BLDG
BLDG T	TYPE OF BLDG
BLDG U	TYPE OF BLDG
BLDG V	TYPE OF BLDG
BLDG W	TYPE OF BLDG
BLDG X	TYPE OF BLDG
BLDG Y	TYPE OF BLDG
BLDG Z	TYPE OF BLDG
BLDG AA	TYPE OF BLDG
BLDG AB	TYPE OF BLDG
BLDG AC	TYPE OF BLDG
BLDG AD	TYPE OF BLDG
BLDG AE	TYPE OF BLDG
BLDG AF	TYPE OF BLDG
BLDG AG	TYPE OF BLDG
BLDG AH	TYPE OF BLDG
BLDG AI	TYPE OF BLDG
BLDG AJ	TYPE OF BLDG
BLDG AK	TYPE OF BLDG
BLDG AL	TYPE OF BLDG
BLDG AM	TYPE OF BLDG
BLDG AN	TYPE OF BLDG
BLDG AO	TYPE OF BLDG
BLDG AP	TYPE OF BLDG
BLDG AQ	TYPE OF BLDG
BLDG AR	TYPE OF BLDG
BLDG AS	TYPE OF BLDG
BLDG AT	TYPE OF BLDG
BLDG AU	TYPE OF BLDG
BLDG AV	TYPE OF BLDG
BLDG AW	TYPE OF BLDG
BLDG AX	TYPE OF BLDG
BLDG AY	TYPE OF BLDG
BLDG AZ	TYPE OF BLDG
BLDG BA	TYPE OF BLDG
BLDG BB	TYPE OF BLDG
BLDG BC	TYPE OF BLDG
BLDG BD	TYPE OF BLDG
BLDG BE	TYPE OF BLDG
BLDG BF	TYPE OF BLDG
BLDG BG	TYPE OF BLDG
BLDG BH	TYPE OF BLDG
BLDG BI	TYPE OF BLDG
BLDG BJ	TYPE OF BLDG
BLDG BK	TYPE OF BLDG
BLDG BL	TYPE OF BLDG
BLDG BM	TYPE OF BLDG
BLDG BN	TYPE OF BLDG
BLDG BO	TYPE OF BLDG
BLDG BP	TYPE OF BLDG
BLDG BQ	TYPE OF BLDG
BLDG BR	TYPE OF BLDG
BLDG BS	TYPE OF BLDG
BLDG BT	TYPE OF BLDG
BLDG BU	TYPE OF BLDG
BLDG BV	TYPE OF BLDG
BLDG BV	TYPE OF BLDG
BLDG BW	TYPE OF BLDG
BLDG BX	TYPE OF BLDG
BLDG BY	TYPE OF BLDG
BLDG BZ	TYPE OF BLDG
BLDG CA	TYPE OF BLDG
BLDG CB	TYPE OF BLDG
BLDG CC	TYPE OF BLDG
BLDG CD	TYPE OF BLDG
BLDG CE	TYPE OF BLDG
BLDG CF	TYPE OF BLDG
BLDG CG	TYPE OF BLDG
BLDG CH	TYPE OF BLDG
BLDG CI	TYPE OF BLDG
BLDG CJ	TYPE OF BLDG
BLDG CK	TYPE OF BLDG
BLDG CL	TYPE OF BLDG
BLDG CM	TYPE OF BLDG
BLDG CN	TYPE OF BLDG
BLDG CO	TYPE OF BLDG
BLDG CP	TYPE OF BLDG
BLDG CQ	TYPE OF BLDG
BLDG CR	TYPE OF BLDG
BLDG CS	TYPE OF BLDG
BLDG CT	TYPE OF BLDG
BLDG CU	TYPE OF BLDG
BLDG CV	TYPE OF BLDG
BLDG CW	TYPE OF BLDG
BLDG CX	TYPE OF BLDG
BLDG CY	TYPE OF BLDG
BLDG CZ	TYPE OF BLDG
BLDG DA	TYPE OF BLDG
BLDG DB	TYPE OF BLDG
BLDG DC	TYPE OF BLDG
BLDG DD	TYPE OF BLDG
BLDG DE	TYPE OF BLDG
BLDG DF	TYPE OF BLDG
BLDG DG	TYPE OF BLDG
BLDG DH	TYPE OF BLDG
BLDG DI	TYPE OF BLDG
BLDG DJ	TYPE OF BLDG
BLDG DK	TYPE OF BLDG
BLDG DL	TYPE OF BLDG
BLDG DM	TYPE OF BLDG
BLDG DN	TYPE OF BLDG
BLDG DO	TYPE OF BLDG
BLDG DP	TYPE OF BLDG
BLDG DP	TYPE OF BLDG
BLDG DQ	TYPE OF BLDG
BLDG DR	TYPE OF BLDG
BLDG DS	TYPE OF BLDG
BLDG DT	TYPE OF BLDG
BLDG DU	TYPE OF BLDG
BLDG DV	TYPE OF BLDG
BLDG DV	TYPE OF BLDG
BLDG DW	TYPE OF BLDG
BLDG DX	TYPE OF BLDG
BLDG DY	TYPE OF BLDG
BLDG DZ	TYPE OF BLDG
BLDG EA	TYPE OF BLDG
BLDG EB	TYPE OF BLDG
BLDG EC	TYPE OF BLDG
BLDG ED	TYPE OF BLDG
BLDG EE	TYPE OF BLDG
BLDG EF	TYPE OF BLDG
BLDG EF	TYPE OF BLDG
BLDG EG	TYPE OF BLDG
BLDG EH	TYPE OF BLDG
BLDG EI	TYPE OF BLDG
BLDG EJ	TYPE OF BLDG
BLDG EK	TYPE OF BLDG
BLDG EL	TYPE OF BLDG
BLDG EM	TYPE OF BLDG
BLDG EN	TYPE OF BLDG
BLDG EO	TYPE OF BLDG
BLDG EP	TYPE OF BLDG
BLDG EP	TYPE OF BLDG
BLDG EQ	TYPE OF BLDG
BLDG ER	TYPE OF BLDG
BLDG ES	TYPE OF BLDG
BLDG ET	TYPE OF BLDG
BLDG EU	TYPE OF BLDG
BLDG EV	TYPE OF BLDG
BLDG EV	TYPE OF BLDG
BLDG EW	TYPE OF BLDG
BLDG EX	TYPE OF BLDG
BLDG EY	TYPE OF BLDG
BLDG EZ	TYPE OF BLDG
BLDG FA	TYPE OF BLDG
BLDG FB	TYPE OF BLDG
BLDG FC	TYPE OF BLDG
BLDG FD	TYPE OF BLDG
BLDG FE	TYPE OF BLDG
BLDG FE	TYPE OF BLDG
BLDG FF	TYPE OF BLDG
BLDG FG	TYPE OF BLDG
BLDG FH	TYPE OF BLDG
BLDG FI	TYPE OF BLDG
BLDG FJ	TYPE OF BLDG
BLDG FK	TYPE OF BLDG
BLDG FL	TYPE OF BLDG
BLDG FM	TYPE OF BLDG
BLDG FN	TYPE OF BLDG
BLDG FO	TYPE OF BLDG
BLDG FP	TYPE OF BLDG
BLDG FP	TYPE OF BLDG
BLDG FQ	TYPE OF BLDG
BLDG FR	TYPE OF BLDG
BLDG FS	TYPE OF BLDG
BLDG FT	TYPE OF BLDG
BLDG FU	TYPE OF BLDG
BLDG FV	TYPE OF BLDG
BLDG FV	TYPE OF BLDG
BLDG FW	TYPE OF BLDG
BLDG FX	TYPE OF BLDG
BLDG FY	TYPE OF BLDG
BLDG FZ	TYPE OF BLDG
BLDG GA	TYPE OF BLDG
BLDG GB	TYPE OF BLDG
BLDG GC	TYPE OF BLDG
BLDG GD	TYPE OF BLDG
BLDG GE	TYPE OF BLDG
BLDG GE	TYPE OF BLDG
BLDG GF	TYPE OF BLDG
BLDG GH	TYPE OF BLDG
BLDG GI	TYPE OF BLDG
BLDG GJ	TYPE OF BLDG
BLDG GK	TYPE OF BLDG
BLDG GL	TYPE OF BLDG
BLDG GM	TYPE OF BLDG
BLDG GN	TYPE OF BLDG
BLDG GO	TYPE OF BLDG
BLDG GP	TYPE OF BLDG
BLDG GP	TYPE OF BLDG
BLDG GQ	TYPE OF BLDG
BLDG GR	TYPE OF BLDG
BLDG GS	TYPE OF BLDG
BLDG GT	TYPE OF BLDG
BLDG GU	TYPE OF BLDG
BLDG GV	TYPE OF BLDG
BLDG GV	TYPE OF BLDG
BLDG GW	TYPE OF BLDG
BLDG GX	TYPE OF BLDG
BLDG GY	TYPE OF BLDG
BLDG GZ	TYPE OF BLDG
BLDG HA	TYPE OF BLDG
BLDG HB	TYPE OF BLDG
BLDG HC	TYPE OF BLDG
BLDG HD	TYPE OF BLDG
BLDG HE	TYPE OF BLDG
BLDG HE	TYPE OF BLDG
BLDG HF	TYPE OF BLDG
BLDG HG	TYPE OF BLDG
BLDG HI	TYPE OF BLDG
BLDG HJ	TYPE OF BLDG
BLDG HK	TYPE OF BLDG
BLDG HL	TYPE OF BLDG
BLDG HM	TYPE OF BLDG
BLDG HN	TYPE OF BLDG
BLDG HO	TYPE OF BLDG
BLDG HP	TYPE OF BLDG
BLDG HP	TYPE OF BLDG
BLDG HQ	TYPE OF BLDG
BLDG HR	TYPE OF BLDG
BLDG HS	TYPE OF BLDG
BLDG HT	TYPE OF BLDG
BLDG HU	TYPE OF BLDG
BLDG HV	TYPE OF BLDG
BLDG HV	TYPE OF BLDG
BLDG HW	TYPE OF BLDG
BLDG HX	TYPE OF BLDG
BLDG HY	TYPE OF BLDG
BLDG HZ	TYPE OF BLDG
BLDG IA	TYPE OF BLDG
BLDG IB	TYPE OF BLDG
BLDG IC	TYPE OF BLDG
BLDG ID	TYPE OF BLDG
BLDG IE	TYPE OF BLDG
BLDG IE	TYPE OF BLDG
BLDG IF	TYPE OF BLDG
BLDG IG	TYPE OF BLDG
BLDG IH	TYPE OF BLDG
BLDG IJ	TYPE OF BLDG
BLDG IK	TYPE OF BLDG
BLDG IL	TYPE OF BLDG
BLDG IM	TYPE OF BLDG
BLDG IN	TYPE OF BLDG
BLDG IO	TYPE OF BLDG
BLDG IP	TYPE OF BLDG
BLDG IP	TYPE OF BLDG
BLDG IQ	TYPE OF BLDG
BLDG IR	TYPE OF BLDG
BLDG IS	TYPE OF BLDG
BLDG IT	TYPE OF BLDG
BLDG IU	TYPE OF BLDG
BLDG IV	TYPE OF BLDG
BLDG IV	TYPE OF BLDG
BLDG IW	TYPE OF BLDG
BLDG IX	TYPE OF BLDG
BLDG IY	TYPE OF BLDG
BLDG IZ	TYPE OF BLDG
BLDG JA	TYPE OF BLDG
BLDG JB	TYPE OF BLDG
BLDG JC	TYPE OF BLDG
BLDG JD	TYPE OF BLDG
BLDG JE	TYPE OF BLDG
BLDG JE	TYPE OF BLDG
BLDG JF	TYPE OF BLDG
BLDG JG	TYPE OF BLDG
BLDG JH	TYPE OF BLDG
BLDG IJ	TYPE OF BLDG
BLDG JK	TYPE OF BLDG
BLDG JL	TYPE OF BLDG
BLDG JM	TYPE OF BLDG
BLDG JN	TYPE OF BLDG
BLDG JO	TYPE OF BLDG
BLDG JP	TYPE OF BLDG
BLDG JP	TYPE OF BLDG
BLDG JQ	TYPE OF BLDG
BLDG JR	TYPE OF BLDG
BLDG JS	TYPE OF BLDG
BLDG JT	TYPE OF BLDG
BLDG JU	TYPE OF BLDG
BLDG JV	TYPE OF BLDG
BLDG JV	TYPE OF BLDG
BLDG JW	TYPE OF BLDG
BLDG JX	TYPE OF BLDG
BLDG JY	TYPE OF BLDG
BLDG JZ	TYPE OF BLDG
BLDG KA	TYPE OF BLDG
BLDG KB	TYPE OF BLDG
BLDG KC	TYPE OF BLDG
BLDG KD	TYPE OF BLDG
BLDG KE	TYPE OF BLDG
BLDG KE	TYPE OF BLDG
BLDG KF	TYPE OF BLDG
BLDG KG	TYPE OF BLDG
BLDG KH	TYPE OF BLDG
BLDG KI	TYPE OF BLDG
BLDG KJ	TYPE OF BLDG
BLDG KK	TYPE OF BLDG
BLDG KL	TYPE OF BLDG
BLDG KM	TYPE OF BLDG
BLDG KN	TYPE OF BLDG
BLDG KO	TYPE OF BLDG
BLDG KP	TYPE OF BLDG
BLDG KP	TYPE OF BLDG
BLDG KQ	TYPE OF BLDG
BLDG KR	TYPE OF BLDG
BLDG KS	TYPE OF BLDG
BLDG KT	TYPE OF BLDG
BLDG KU	TYPE OF BLDG
BLDG KV	TYPE OF BLDG
BLDG KV	TYPE OF BLDG
BLDG KW	TYPE OF BLDG
BLDG KX	TYPE OF BLDG
BLDG KY	TYPE OF BLDG
BLDG KZ	TYPE OF BLDG
BLDG LA	TYPE OF BLDG
BLDG LB	TYPE OF BLDG
BLDG LC	TYPE OF BLDG
BLDG LD	TYPE OF BLDG
BLDG LE	TYPE OF BLDG
BLDG LE	TYPE OF BLDG
BLDG LF	TYPE OF BLDG
BLDG LG	TYPE OF BLDG
BLDG LH	TYPE OF BLDG
BLDG LI	TYPE OF BLDG
BLDG LJ	TYPE OF BLDG
BLDG LK	TYPE OF BLDG
BLDG LL	TYPE OF BLDG
BLDG LM	TYPE OF BLDG
BLDG LN	TYPE OF BLDG
BLDG LO	TYPE OF BLDG
BLDG LP	TYPE OF BLDG
BLDG LP	TYPE OF BLDG
BLDG LQ	TYPE OF BLDG
BLDG LR	TYPE OF BLDG
BLDG LS	TYPE OF BLDG
BLDG LT	TYPE OF BLDG
BLDG LU	TYPE OF BLDG
BLDG LV	TYPE OF BLDG
BLDG LV	TYPE OF BLDG
BLDG LW	TYPE OF BLDG
BLDG LX	TYPE OF BLDG
BLDG LY	TYPE OF BLDG
BLDG LZ	TYPE OF BLDG
BLDG MA	TYPE OF BLDG
BLDG MB	TYPE OF BLDG
BLDG MC	TYPE OF BLDG
BLDG MD	TYPE OF BLDG
BLDG ME	TYPE OF BLDG
BLDG ME	TYPE OF BLDG
BLDG MF	TYPE OF BLDG
BLDG MG	TYPE OF BLDG
BLDG MH	TYPE OF BLDG
BLDG MI	TYPE OF BLDG
BLDG MJ	TYPE OF BLDG
BLDG MK	TYPE OF BLDG
BLDG ML	TYPE OF BLDG
BLDG MM	TYPE OF BLDG
BLDG MN	TYPE OF BLDG
BLDG MO	TYPE OF BLDG
BLDG MP	TYPE OF BLDG
BLDG MP	TYPE OF BLDG
BLDG MQ	TYPE OF BLDG
BLDG MR	TYPE OF BLDG
BLDG MS	TYPE OF BLDG
BLDG MT	TYPE OF BLDG
BLDG MU	TYPE OF BLDG
BLDG MV	TYPE OF BLDG
BLDG MV	TYPE OF BLDG
BLDG MW	TYPE OF BLDG
BLDG MX	TYPE OF BLDG
BLDG MY	TYPE OF BLDG
BLDG MZ	TYPE OF BLDG
BLDG NA	TYPE OF BLDG
BLDG NB	TYPE OF BLDG
BLDG NC	TYPE OF BLDG
BLDG ND	TYPE OF BLDG
BLDG NE	TYPE OF BLDG
BLDG NE	TYPE OF BLDG
BLDG NF	TYPE OF BLDG
BLDG NG	TYPE OF BLDG
BLDG NH	TYPE OF BLDG
BLDG NI	TYPE OF BLDG
BLDG NJ	TYPE OF BLDG
BLDG NK	TYPE OF BLDG
BLDG NL	TYPE OF BLDG
BLDG NM	TYPE OF BLDG
BLDG NN	TYPE OF BLDG
BLDG NO	TYPE OF BLDG
BLDG NP	TYPE OF BLDG
BLDG NP	TYPE OF BLDG
BLDG NQ	TYPE OF BLDG
BLDG NR	TYPE OF BLDG
BLDG NS	TYPE OF BLDG
BLDG NT	TYPE OF BLDG
BLDG NU	TYPE OF BLDG
BLDG NV	TYPE OF BLDG
BLDG NV	TYPE OF BLDG
BLDG NW	TYPE OF BLDG
BLDG NX	TYPE OF BLDG
BLDG NY	TYPE OF BLDG
BLDG NZ	TYPE OF BLDG
BLDG OA	TYPE OF BLDG
BLDG OB	TYPE OF BLDG
BLDG OC	TYPE OF BLDG
BLDG OD	TYPE OF BLDG
BLDG OE	TYPE OF BLDG
BLDG OE	TYPE OF BLDG
BLDG OF	TYPE OF BLDG
BLDG OG	TYPE OF BLDG
BLDG OH	TYPE OF BLDG
BLDG OI	TYPE OF BLDG
BLDG OJ	TYPE OF BLDG
BLDG OK	TYPE OF BLDG
BLDG OL	TYPE OF BLDG
BLDG OM	TYPE OF BLDG
BLDG ON	TYPE OF BLDG
BLDG OO	TYPE OF BLDG
BLDG OP	TYPE OF BLDG
BLDG OP	TYPE OF BLDG
BLDG OQ	TYPE OF BLDG
BLDG OR	TYPE OF BLDG
BLDG OS	TYPE OF BLDG