



**Wichita-Sedgwick County Metropolitan Area Planning Department**

December 20, 2005

Socora Village Company  
727 N. Waco  
Ste 400  
Wichita, KS 67203

Re: **VAC2005-00039** - Request to vacate a platted drainage easement, generally located south of 29<sup>th</sup> Street North and west of Maize Road, northeast of the Parkdale Court – Parkdale Street intersection.

Dear Ladies and Gentlemen:

At its regular meeting on Tuesday, December 13, 2005, the Wichita City Council considered request. The action of the City Council was to APPROVE subject to the recommendation by the MAPC.

If you have any questions about this matter, please call 268-4494.

Sincerely,

Bill Longnecker  
Senior Planner

BL:le

cc: Jim Armour, City Engineer, Public Works Department, Mailstop 1-71  
Paul Gunzelman/Carla Jones, Public Works Engineering, Mail Stop 1-71  
PEC c/o Rob Hartman, 303 S. Topeka, Wichita, KS 67202  
Socora Village Company, P.O. Box 2907, Wichita, KS 67201



2. No private rights will be injured or endangered by the vacation of the above-described platted drainage easement, and the public will suffer no loss or inconvenience thereby.

3. Dedicate by separate instrument a 20-foot drainage easement to replace the vacated drainage easement, to be recorded with the Register of Deeds.

4. In justice to the petitioner(s), the prayer of the petition ought to be granted.

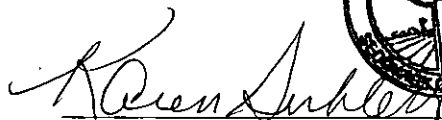
5. No written objection to said vacation has been filed with the City Clerk by any owner or adjoining owner who would be a proper party to the petition.

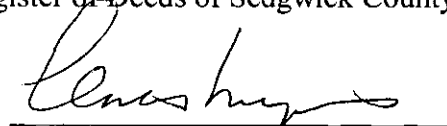
6. The vacation of the platted drainage easement described herein should be approved.

IT IS, THEREFORE, BY THE CITY COUNCIL, on this 13<sup>th</sup> day of December 2005 ordered that the above-described platted drainage easement is hereby vacated. IT IS FURTHER ORDERED that the City Clerk shall certify a copy of this order to the Register of Deeds of Sedgwick County.




ATTEST:

  
Karen Sublett, City Clerk

  
Carlos Mayans, Mayor

Approved as to Form:

  
Gary Rebenstorf, Director of Law

RECEIVED  
DEC 14 2005

DEC 14 2005

RECEIVED

STAFF REPORT

**CASE NUMBER:** VAC2005-00039 Request to vacate platted drainage/utility easement

**APPLICANTS/OWNERS:** Socora Village Company, c/o Larry Chambers

**AGENT:** PEC, c/o Rob Hartman

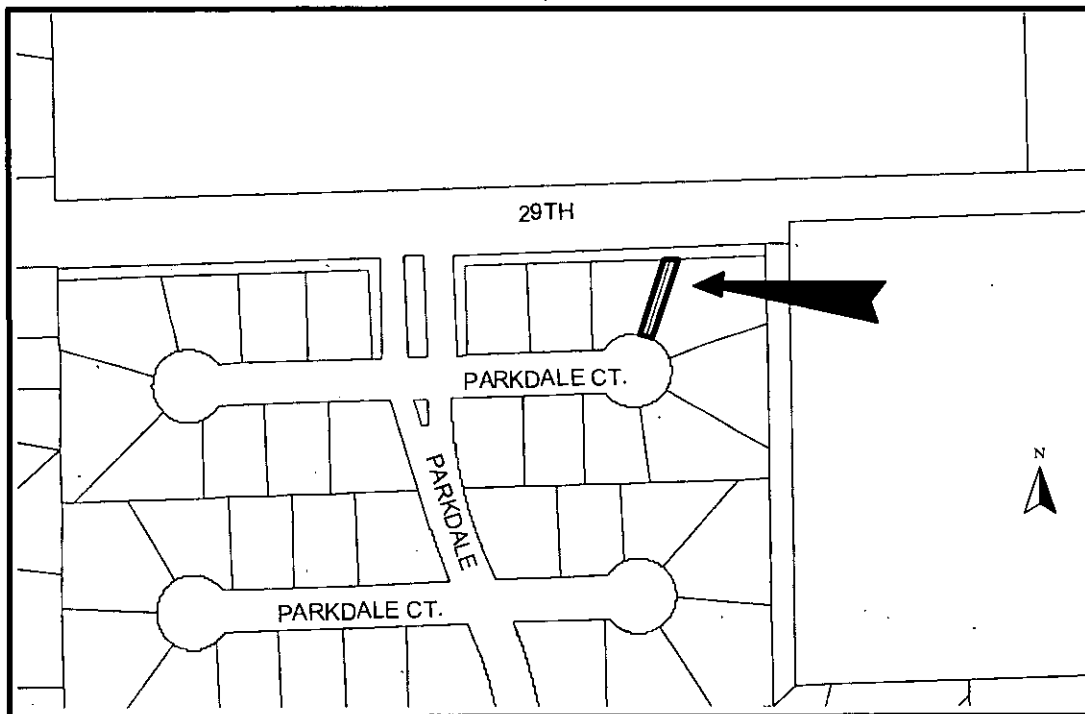
**LEGAL DESCRIPTION:** Generally described as the platted 20-foot drainage easement located between Lots 3 & 4, Block 2, the Evergreen 5th Addition, as recorded Wichita, Sedgwick County, Kansas (District V)

**LOCATION:** Generally located south of 29<sup>th</sup> Street North, west of Maize Road, and northeast of the Parkdale Court – Parkdale Street intersection

**REASON FOR REQUEST:** Replace with another drainage easement

**CURRENT ZONING:** Site and all abutting and adjacent properties are zoned "SF-5" Single-family Residential

**VICINITY MAP:**



The applicant is requesting consideration to vacate the platted 20-foot drainage easement, as previously described. A change in the grade in the abutting Reserve D, as a result of the construction of a wrought iron fence in it, allows drainage to the east of the platted easement. The applicant proposes to replace the

platted easement by dedicating a 15-foot drainage easement to be located between Lots 2 & 3, Block 2, The Evergreen 5<sup>th</sup> Addition. The replacement easement is located just east of the easement proposed to be vacated. The applicant owns all of the lots involved in the vacation request. There are no utilities, water or sewer lines or manholes in the platted easement. The Evergreen 5<sup>th</sup> Addition was recorded with the Register of Deeds October 4, 2004.

Based upon information available prior to the public hearings and reserving the right to make recommendations based on subsequent comments from City Public Works, franchised utility representatives and other interested parties, Planning Staff recommends approval to vacate the platted drainage easement as described in the attached legal, with conditions.

- A. That after being duly and fully informed as to fully understand the true nature of this petition and the propriety of granting the same, the MAPC makes the following findings:
1. That due and legal notice has been given by publication as required by law, by publication in the Wichita Eagle of notice of this vacation proceeding one time October 27, 2005 which was at least 20 days prior to this public hearing.
  2. That no private rights will be injured or endangered by the vacation of the above-described platted drainage easement and the public will suffer no loss or inconvenience thereby.
  3. In justice to the petitioner, the prayer of the petition ought to be granted.

Therefore, the vacation of the platted drainage easement described in the petition should be approved with conditions;

- (1) If needed, provide the Storm Water Engineer with any plans needed to determine if the proposed vacated easement is needed and if the replacement is easement will work. The proposed replacement easement is 15-feet wide, if determined by the Storm Water Engineer, be prepared to add an additional 5-feet to the replacement easement; typically 20-foot wide easements are the standard. The drainage easement will be retained until the Storm Water Engineer has approved vacating of the platted easement and any replacement easements.
- (2) Any relocation or reconstruction of utilities made necessary by this vacation shall be the responsibility of the applicants and at the applicant's expense.
- (3) All improvements shall be according to City Standards.
- (4) Per MAPC Policy Statement #7, all conditions to be completed within one year of approval by the MAPC or the vacation request will be considered null and void. All vacation request are not complete until the Wichita City Council or the Sedgwick County Board of County Commissioners have taken final action on the request and the vacation order and all required documents have been provided to the City, County and/or franchised utilities and the necessary documents have been recorded with the Register of Deeds

**SUBDIVISION COMMITTEE'S RECOMMENDED ACTION:**

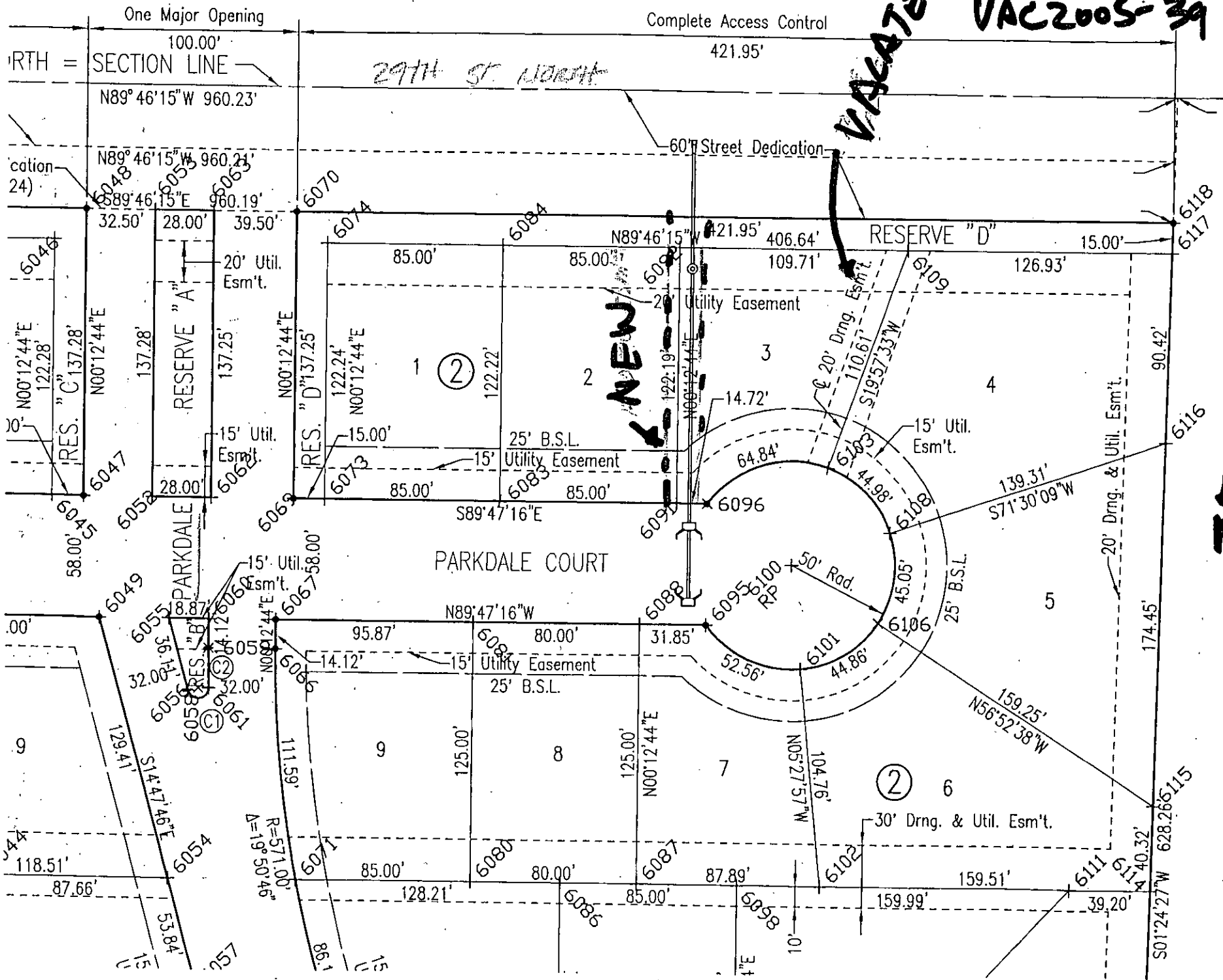
The Subdivision Committee recommends approval subject to the following conditions;

- (1) If needed, provide the Storm Water Engineer with any plans needed to determine if the proposed vacated easement is needed and if the replacement is easement will work. The proposed replacement easement is 15-feet wide, if determined by the Storm Water Engineer, be prepared to add an additional 5-feet to the replacement easement; typically 20-foot wide easements are the standard. The drainage easement will be retained until the Storm Water Engineer has approved vacating of the platted easement and any replacement easements.
- (2) Any relocation or reconstruction of utilities made necessary by this vacation shall be the responsibility of the applicants and at the applicant's expense.
- (3) All improvements shall be according to City Standards.
- (4) Per MAPC Policy Statement #7, all conditions to be completed within one year of approval by the MAPC or the vacation request will be considered null and void. All vacation request are not complete until the Wichita City Council or the Sedgwick County Board of County Commissioners have taken final action on the request and the vacation order and all required documents have been provided to the City, County and/or franchised utilities and the necessary documents have been recorded with the Register of Deeds

2005-39

VAC2005-39

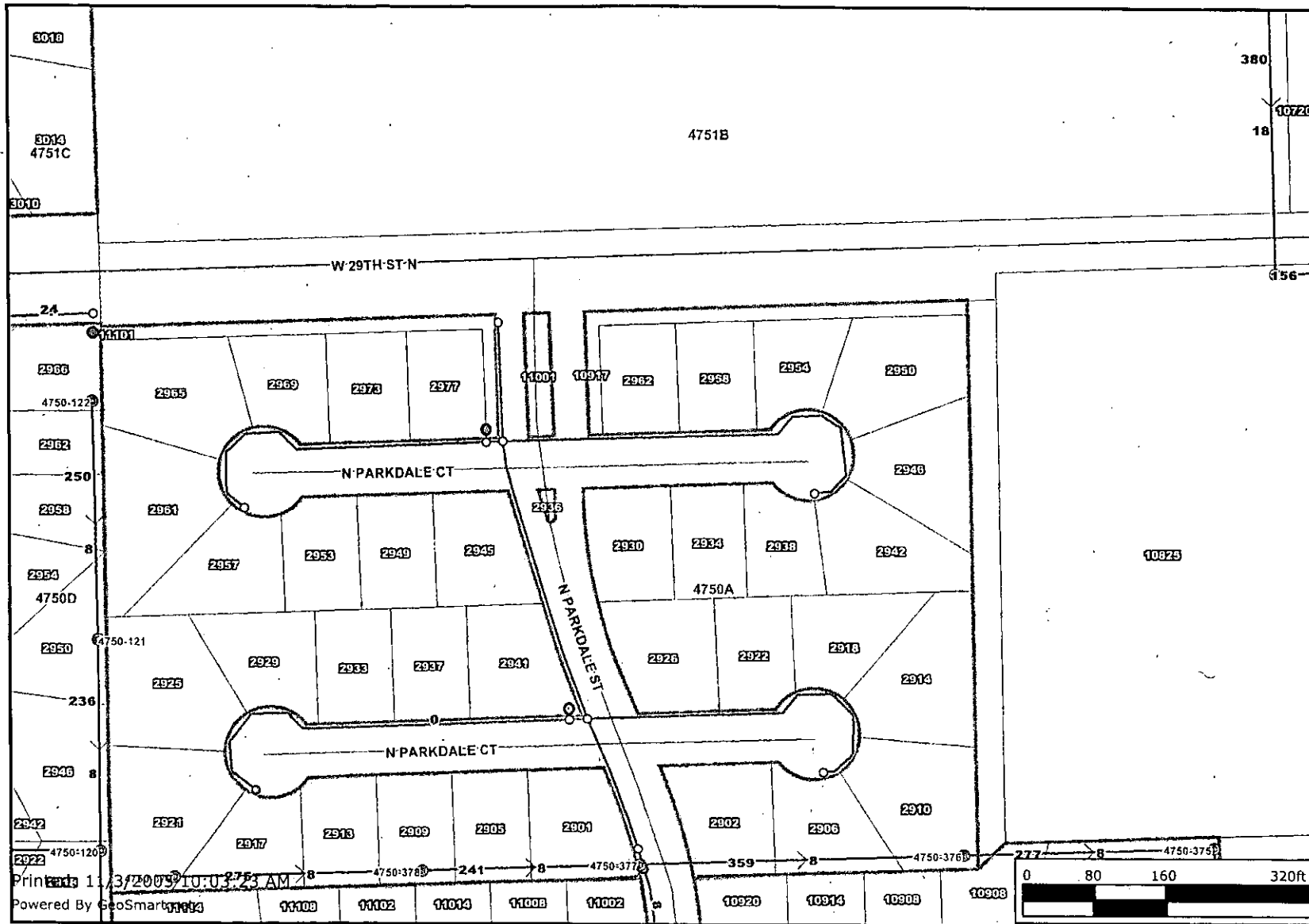
VACATE





# Water & Sewer

## VAC2005-39



**Label Structure Addresses**

**Sewer Line Diameter**

**Sewer Line Length**

- ⊙ Sewer Manholes
- ⊙ Sewer Observation Manholes
- ⊙ Hydrant Schematic
- ⊙ Water Valve Schematic
- ⊙ Water Node Schematic

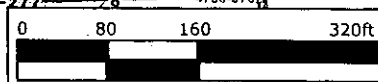
- Property Parcels
- Lot Block
- Subdivisions
- Sewer Flow
- Sewer Lines
- Water Lines Schematic

**Major Roads**

- State Highway
- US Federal Highway
- Interstate
- KTA
- Arterial
- Collector
- Ramp
- Roads
- Railroads

- Quarter Section
- ▨ Waterways
- Streams
- City Limits
- ▨ Andale
- ▨ Bel Aire

Printed 11/3/2005 10:03:23 AM  
 Powered By GeoSmart



Every reasonable effort has been made to assure the accuracy of the maps and associated data provided herein. This information is provided with the understanding that the data are susceptible to a degree of error, and conclusions drawn from such information are the responsibility of the reader. The City of Wichita makes no warranty, representation or guaranty as to the content, accuracy, timeliness or completeness of any of the data provided herein. Some data provided here and used for the preparation of these maps has been obtained from public records not created or maintained by the City of Wichita. The City of Wichita shall assume no liability for any decisions made or actions taken or not taken by the reader in reliance upon any information or data furnished hereunder. The user should consult with the appropriate departmental staff member, e.g. Planning, Parks & Recreation, etc. to confirm the accuracy of information appearing in the visual presentations accessible through these web pages.

