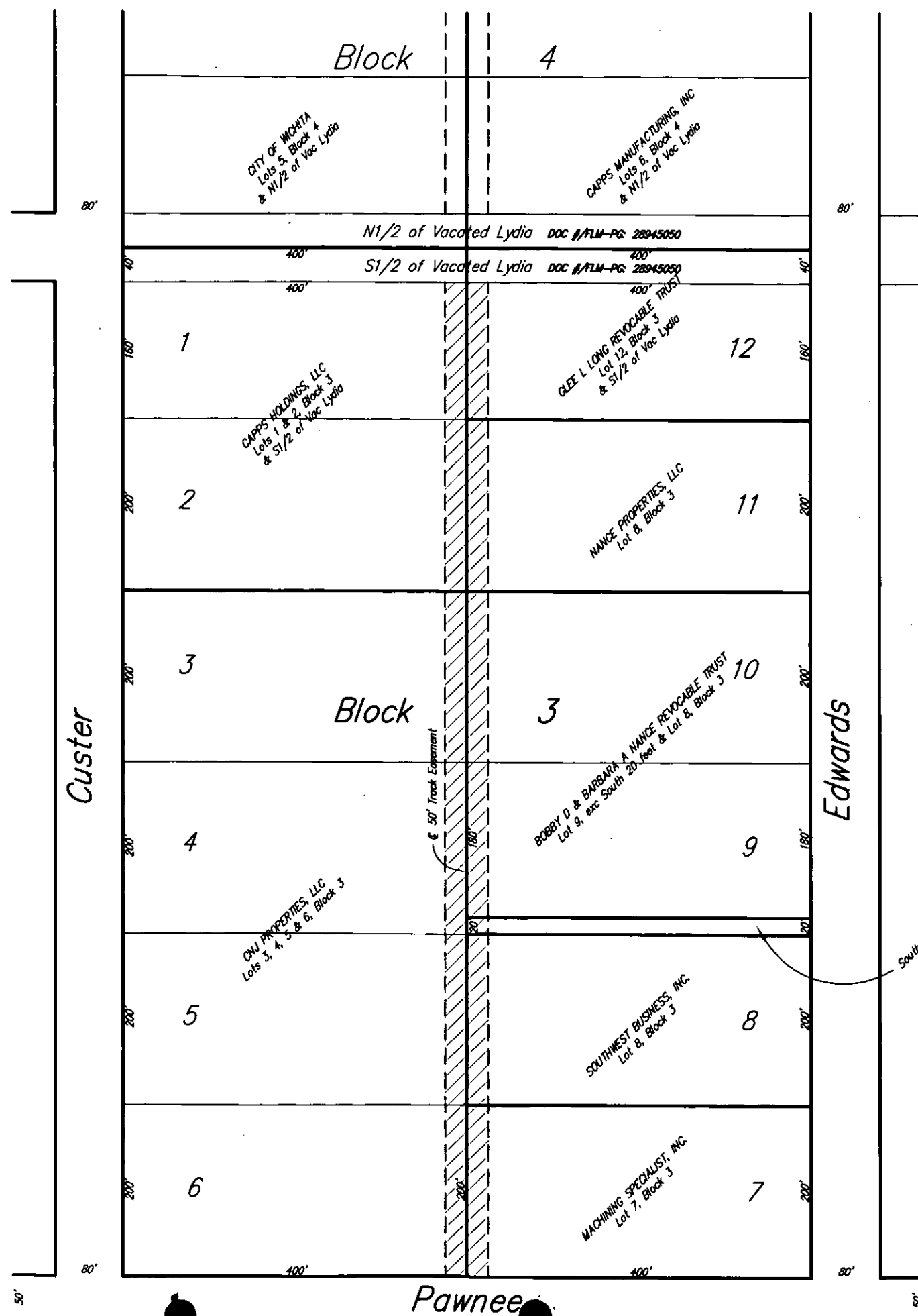


EXHIBIT

Vacation of a Platted 50' Track Easement

The east 25 feet of Lots 1, 2, 3, 4, 5 and 6 and the west 25 feet of Lots 7, 8, 9, 10, 11 and 12, Block 3, Southwest Industrial Addition to Wichita, Kansas, Sedgwick County, Kansas.



Savoy Company, P.A.
Land Surveyors

PH (316) 265-0005

FAX (316) 265-0275

433 S. Hydraulic, Wichita, KS 67211-1911

www.savoyco.com

VAC 2009-10