

SIERRA HILLS

Wichita, Sedgwick

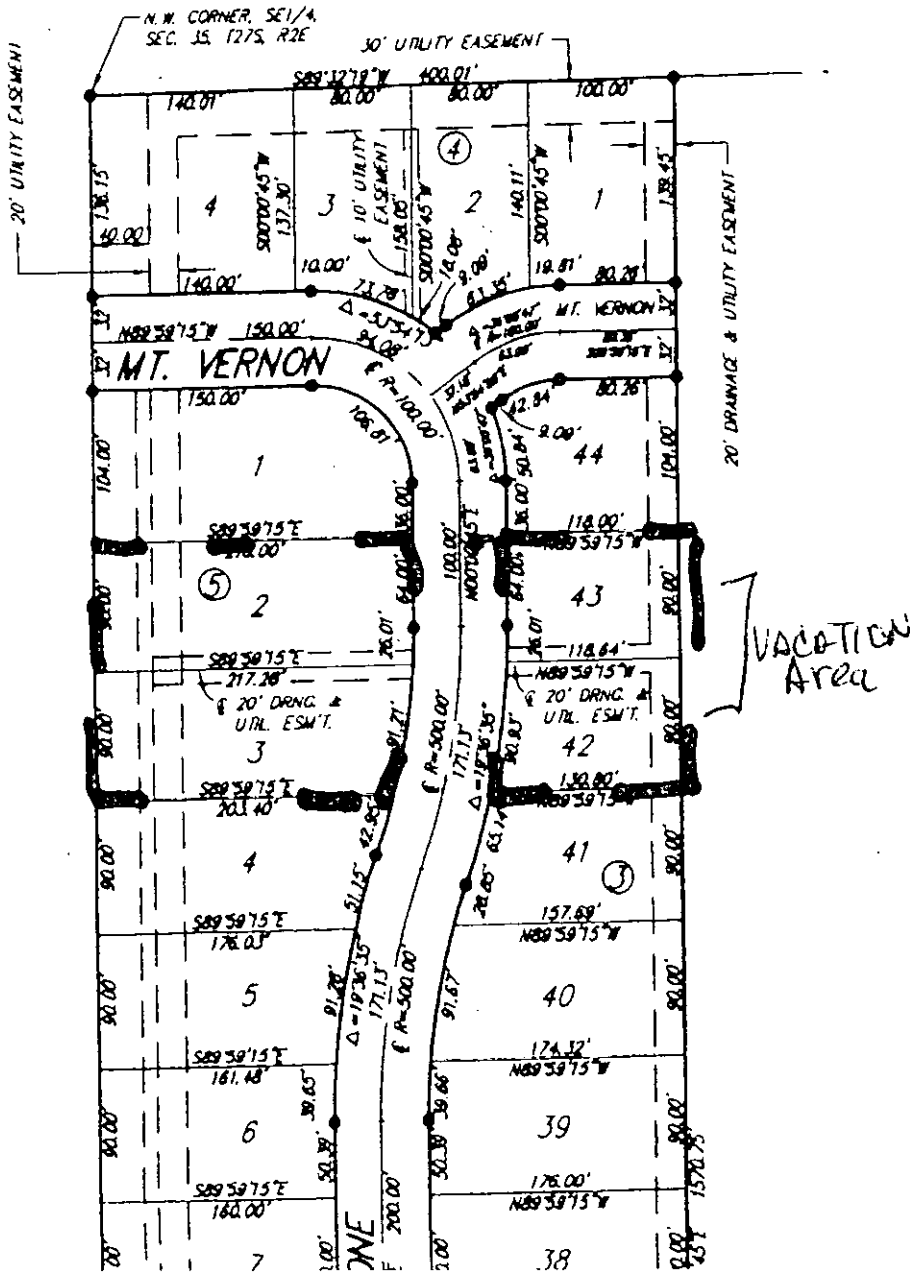
UAC2009-18

State of Kansas)
Sedgwick County) SS

We, Ruggles & Bohm, P.A., Land Surveyors in do hereby certify that, under the supervision surveyed and platted "SIERRA HILLS 2ND A County, Kansas, and that the accompanying exhibit of the property surveyed, described as:

The Southeast Quarter of Section 35, Towns of the Sixth Principal Meridian, Sedgwick Coun at the southeast corner of said Section 35; line 1372 feet; thence with an angle of 10X distance of 302 feet; thence with an angle the right for a distance of 198 feet; thenc 35 minutes to the right for a distance of 46 to the left of 48 degrees 15 minutes for a with an angle to the right of 79 degrees 3 104 feet; thence with an angle to the right a distance 535 feet; thence with an angle 30 minutes to a distance of 322 feet; then of 95 degrees 10 minutes for a distance of thence with an angle of 94 degrees 17 minu for a distance of 856.3 feet to place of l of the SE1/4 of Sec. 35, T27S, R2E of the Kansas described as being the North 1187.86 the West 400.00 feet and EXCEPT the East . 60.00 acres more or less, AND EXCEPT Tho 35, T27S, R2E of the 6th P.M., Sedgwick C beginning at the N.E. corner of said SE1/4 the east line of said SE1/4, 1809.20 feet; feet; thence N00°47'54"E, 322.00 feet; then thence S79°52'54"W, 104.00 feet; thence S north line of said SE1/4, 1760.97 feet to thence N00°00'45"E along said west line, 15; of said SE1/4; thence N89°32'19"E along t. 2639.29 feet to the place of beginning; EX and EXCEPT the West 400.00 feet thereof.

All public easements and dedications are here 12-512(b).



Shirley Bohm
15-000