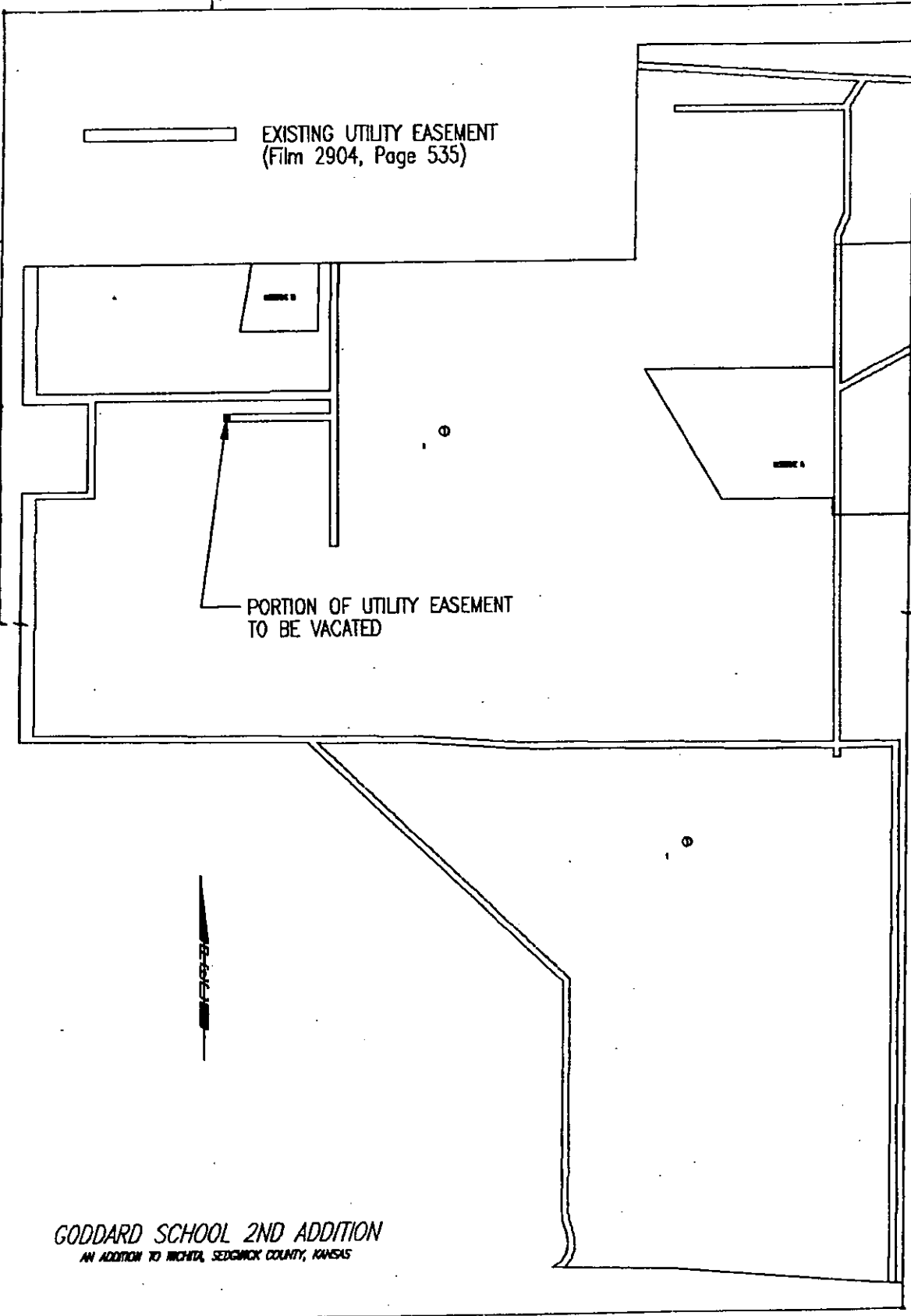


4 INCHES WIDE - SECTION LINE



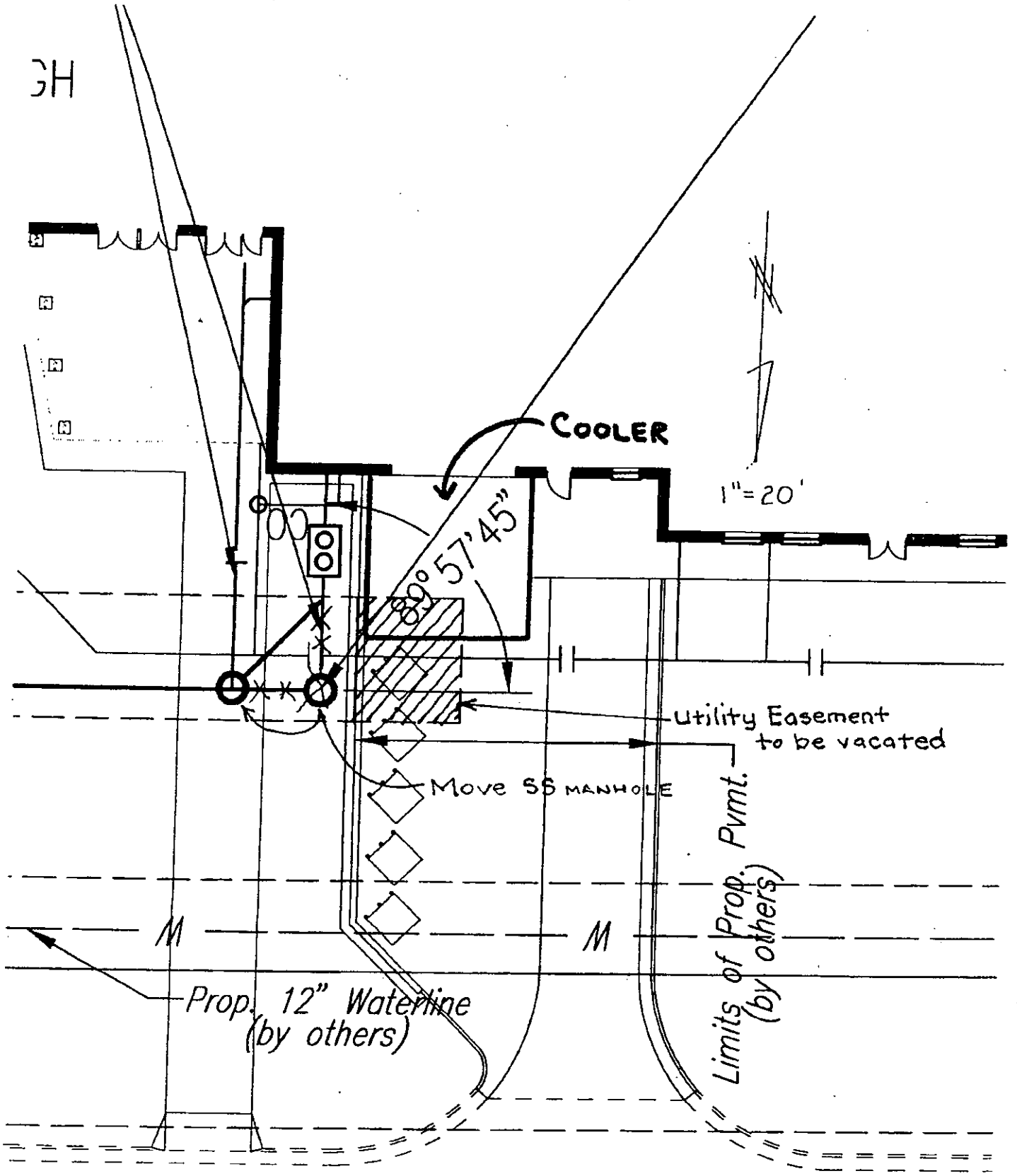
EXISTING UTILITY EASEMENT
(Film 2904, Page 535)

PORTION OF UTILITY EASEMENT
TO BE VACATED

GODDARD SCHOOL 2ND ADDITION
AN ADDITION TO WICHITA, SEDGWICK COUNTY, KANSAS

VAC 2004-36

3H



VAC2009-34