

NE Cor., NE 1/4

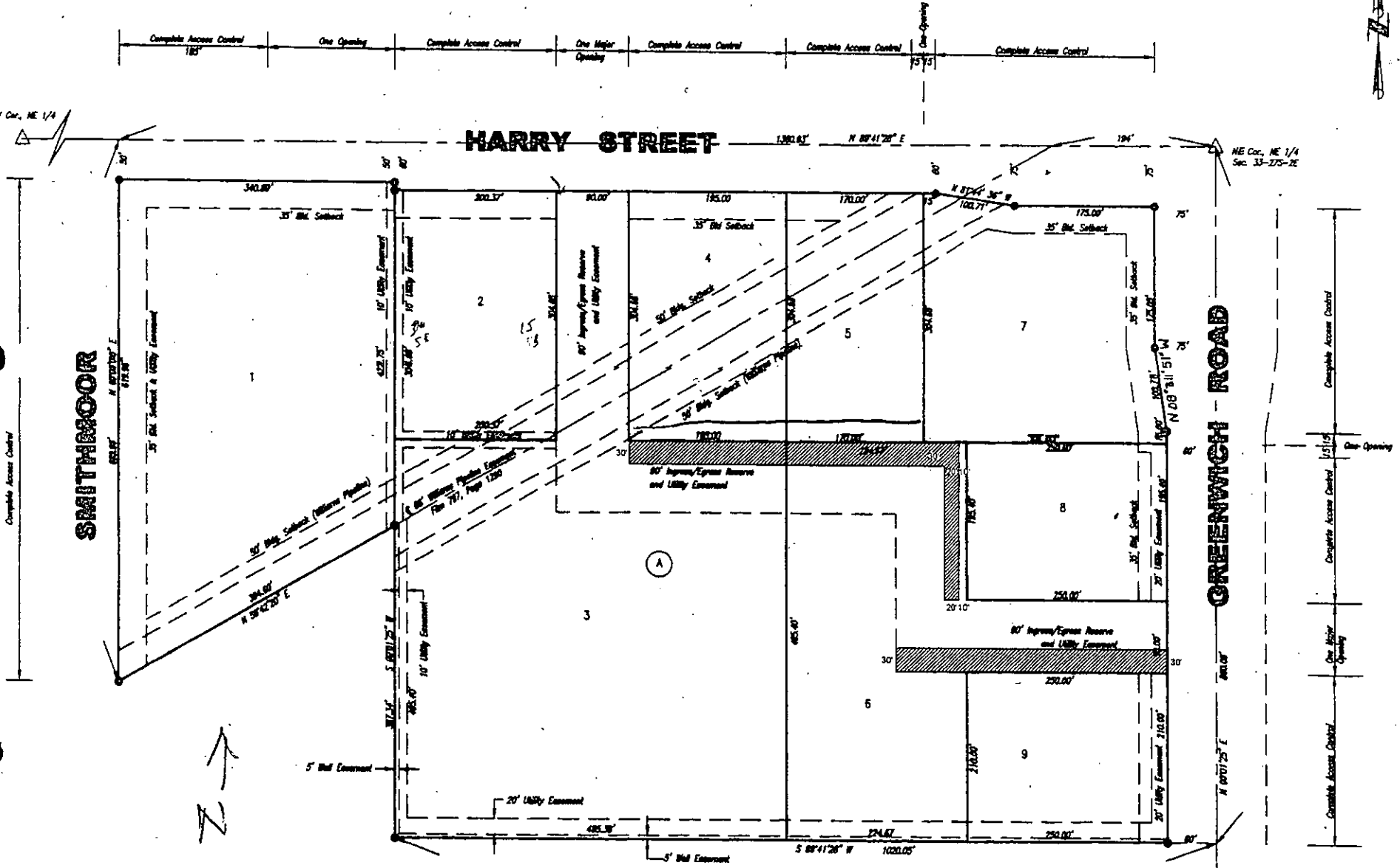
NE Cor., NE 1/4
Sec. 33-275-2E



HARRY STREET

GREENWICH ROAD

SMITHMOOR



- LEGEND:**
- 5/8" Rubber Flood
 - 5/8" Rubber Set
 - △ Cont. Corner

VA C 2009-39
Jan 5, 2000

SE Cor., NE 1/4
Sec. 33-275-2E