

CRESTVIEW COUNTRY CLUB ESTATES SOUTHCREST ADDITION

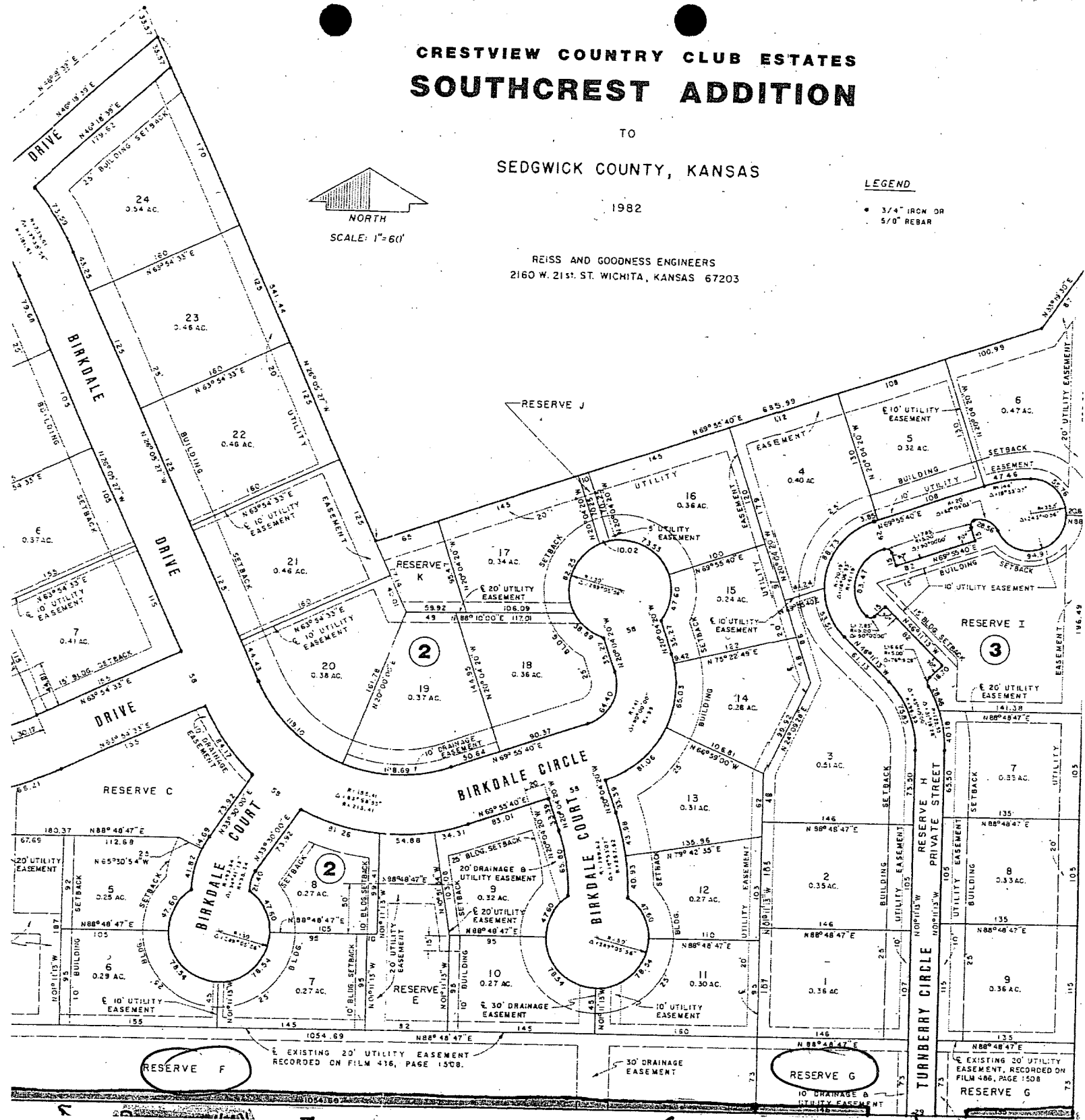
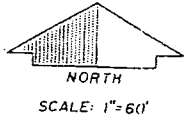
TO
SEDGWICK COUNTY, KANSAS

1982

REISS AND GOODNESS ENGINEERS
2160 W. 21st. ST. WICHITA, KANSAS 67203

LEGEND

- 3/4" IRON OR 5/8" REBAR



RESERVE F

EXISTING 20' UTILITY EASEMENT RECORDED ON FILM 436, PAGE 1508.

RESERVE G

EXISTING 20' UTILITY EASEMENT, RECORDED ON FILM 486, PAGE 1508
RESERVE G

VAC 2013-14 ← (Central Avenue) →