



Sedgwick County
Register of Deeds - Bill Meek
DOC.#/FLM-PG: 29406111

Receipt #: 1873040
Pages Recorded: 3
Cashier Initials: RF

Authorized By  Recording Fee: 00H

Date Recorded: 9/24/2013 4:15:44 PM



BEFORE THE COUNTY COMMISSIONERS
OF SEDGWICK COUNTY, KANSAS

IN THE MATTER OF THE VACATION OF A)
PORTION OF A PLATTED FLOODWAY)
RESERVE)
)
GENERALLY LOCATED BETWEEN K-96 &)
151ST STREET WEST, ON THE NORTH SIDE)
69TH STREET NORTH)
)
)

CASE NO. VAC2013-00019

VACATION ORDER

NOW on this 18th day of September, 2013, at 9:00 o'clock A.M., comes the petition filed by Susan J. Havener (owner), praying for the vacation of the following-described portion of a platted floodway reserve, to-wit:

30' Floodway Reserve to be Vacated:

A portion of Lot 4, Block 1, Imbler Estates 2nd Addition and Lots 6 & 7, Block 3, Imbler Estates Addition in Sedgwick County, Kansas described as: Commencing at the Northwest corner of Lot 4, Block 1, Imbler Estates 2nd Addition; thence on a bearing of South 7°52'10" East along the west line of Lot 4, Block 1, a distance of 110.65'; thence on a bearing of North 87°21'54" East, a distance of

15.06' to the Point of Beginning; thence continuing on a bearing of North 87°21'54" East, a distance of 750.30'; thence on a bearing of South 38°17'04" East, a distance of 76.38'; thence on a bearing of South 87°23'46" West, a distance of 45.83 feet; thence on a bearing of North 38°17'04" West, a distance of 30.55 feet to a point on the west line of Lot 7, Block 3, Imbler Estates Addition; thence South 87°21'54" West, a distance of 736.35'; thence North 7°52'10" West, a distance of 30.12' to the Point of Beginning, containing 0.55 acres more or less.

WHEREUPON, it is shown that proper notice has been given by publication once at least 20 days prior to the date of hearing in the official county newspaper, such publication having occurred on June 20, 2013; and it is further shown that proper proof of such publication has been filed herein. The Board finds that such notice is in lawful form and that it conforms to K.S.A. 58-2613, and amendments thereto.

THEREAFTER, the Board, being duly advised in the premises, finds and determines that no private rights will be injured or endangered by such vacation; that the public will suffer no loss or inconvenience thereby; that no written objections hereto have been filed with the Sedgwick County Clerk; and that, in justice to the petitioner, the petition's prayer should be granted.

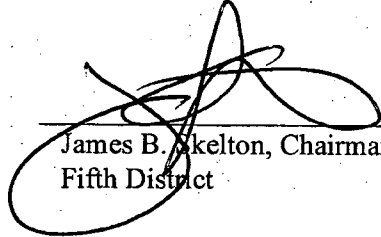
The Board further finds that the Metropolitan Area Planning Commission held a public hearing on the 11th day of July 2013, and recommended that the vacation petition herein be approved.

THEREFORE, IT IS ORDERED BY THE BOARD OF COUNTY COMMISSIONERS OF SEDGWICK COUNTY, KANSAS, that the portion of the platted floodway reserve, hereinabove described be the same and is hereby vacated. It is further ordered that County Clerk shall certify a copy of this order and a dedication of a floodway reserve easement by separate instrument to the Register of Deeds of Sedgwick County.

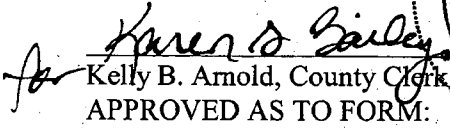
DATED this 18th day of September.

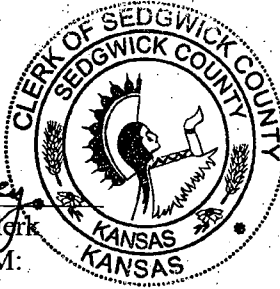
000029406111

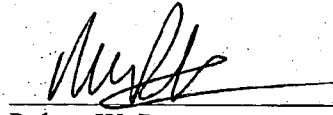
**BOARD OF COUNTY COMMISSIONERS
OF SEDGWICK COUNTY, KANSAS**


James B. Skelton, Chairman
Fifth District

ATTEST:


Kelly B. Arnold, County Clerk
APPROVED AS TO FORM:

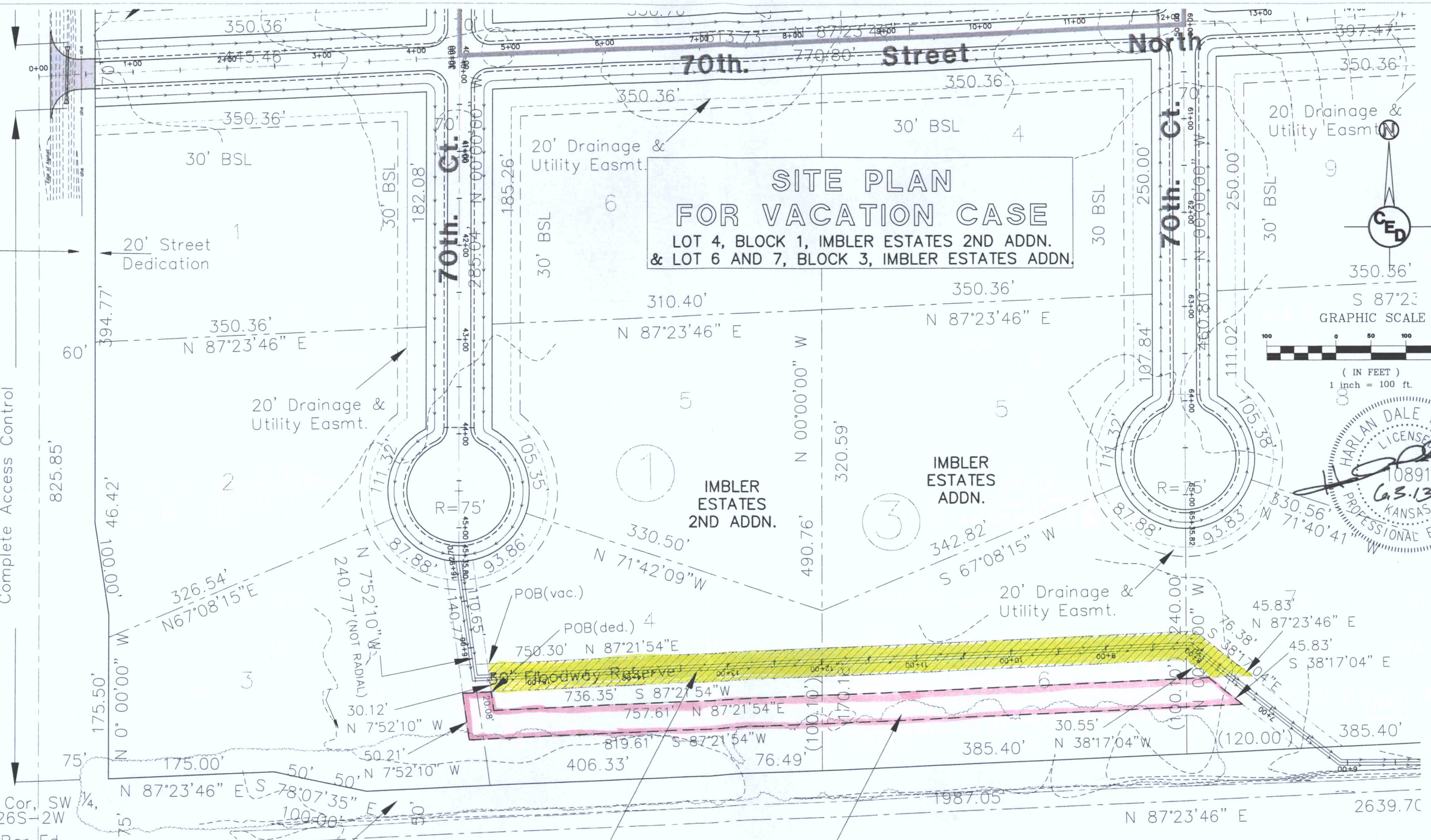



Robert W. Parnacott
Assistant County Counselor

151st. Street West

Complete Access Control

SW Cor, SW 1/4, 2-26S-2W 1/2" Bar Fd.



SITE PLAN FOR VACATION CASE
 LOT 4, BLOCK 1, IMBLER ESTATES 2ND ADDN.
 & LOT 6 AND 7, BLOCK 3, IMBLER ESTATES ADDN.

IMBLER ESTATES 2ND ADDN.

IMBLER ESTATES ADDN.

20' Drainage & Utility Easmt

20' Drainage & Utility Easmt.

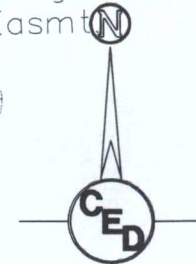
20' Drainage & Utility Easmt.

20' Street Dedication

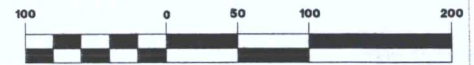
25' Street Dedication

Proposed Vacation of 30' Floodway Reserve

Proposed Grant of 30' Floodway Reserve



S 87°23' GRAPHIC SCALE



(IN FEET)
1 inch = 100 ft.



69th Street North

SITE PLAN FOR VACATION CASE:		
CERTIFIED ENGINEERING DESIGN, P.A.		
CED	1935 WEST MAPLE STREET	SHEET 1
	WICHITA, KANSAS 67213	TOTAL 1
	PH: (316) 262-8808	
	FAX: (316) 262-1669	