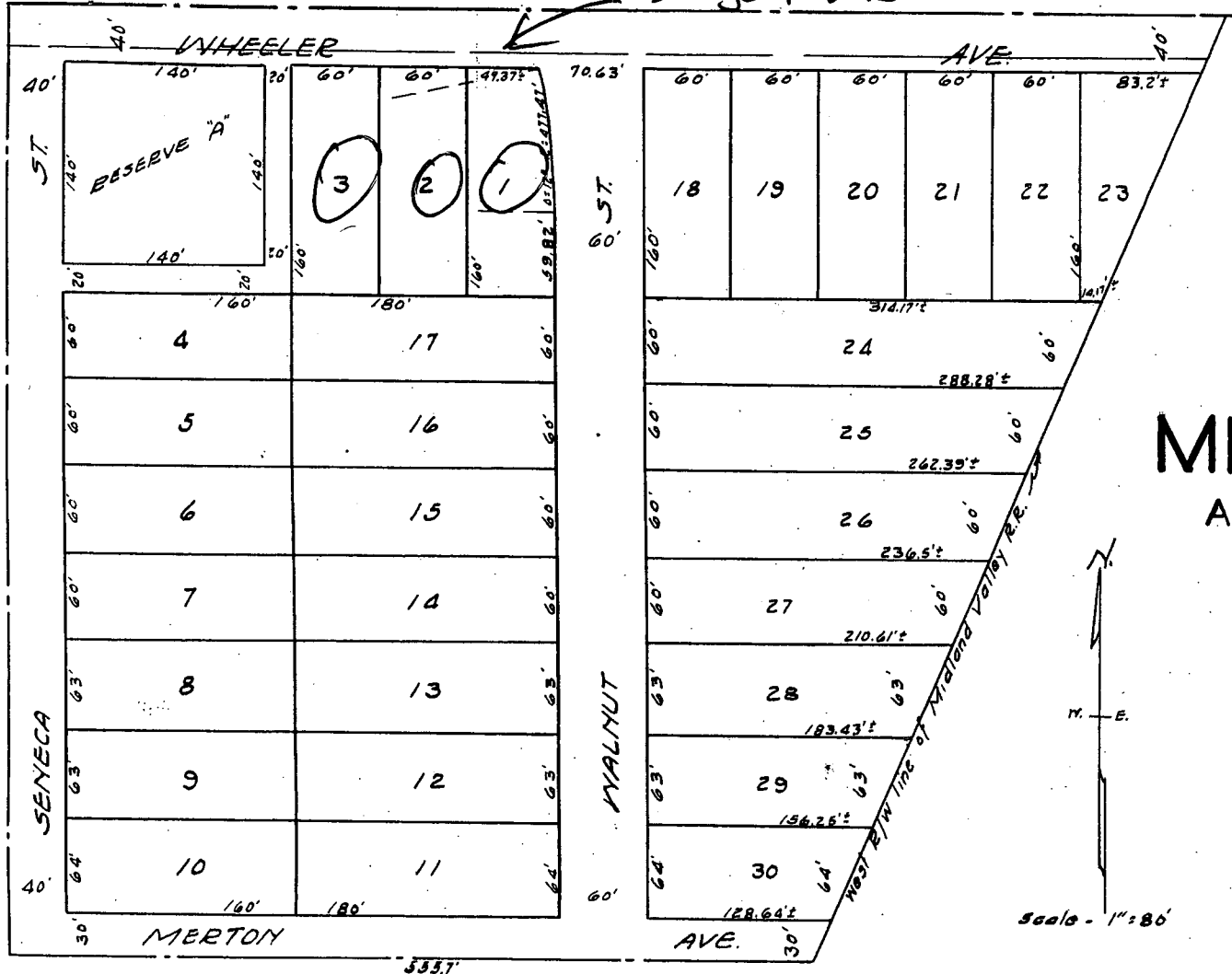


subject lots



VAC2013-30

# MERTON PARK

ADDITION TO WICHITA KANS.

State of Kansas }  
 County of Sedgwick } ss.: J. Clyde M. Boughman, County Surveyor  
 in and for said County and state, do hereby certify that  
 I have surveyed and platted MERTON PARK ADDITION to  
 Wichita Kansas, and that the accompanying plat is a true  
 and correct exhibit of the property as surveyed described as  
 follows: - the north 660 feet of Lot 5, Section 32, Twp. 27, R.1  
 East of the 6th P.M., Sedgwick County, Kansas, lying west of  
 the westerly line of the Midland Valley Railroad, except the  
 north 30' thereof.

This plat of Merton Park Addition has been submitted to and considered by The City Planning Commission of the City of Wichita, Kansas, and is hereby transmitted to the Board of Commissioners of the City of Wichita, Kansas, with the recommendation that such plat be approved as proposed  
 Dated this 20th day of July 1939.

The City Planning Commission of the City of Wichita, Kansas  
 Attest P. W. Brochman Secretary. by W. M. W. W. W. President