

EMERSON ADDITION WICHITA, SEDGWICK COUNTY, KANSAS

This plat approved and all dedications shown hereon accepted by the Board of County Commissioners of Sedgwick County, Kansas, this 13th day of May, 1988

[Signature] Chairman
[Signature] Commissioner
[Signature] Commissioner

ATTEST: [Signature] County Clerk

Entered on transfer record this 13 day of May, 1988

[Signature] County Clerk
Dorothy K. White

State of Kansas, County of Sedgwick, SS.

This is to certify that this instrument was filed for record in the Register of Deeds Office, at 2:00 o'clock P.M., on the 13th day of MAY, 1988

[Signature] Register of Deeds
Patte F. McCart
[Signature] Deputy
Pat Kettler

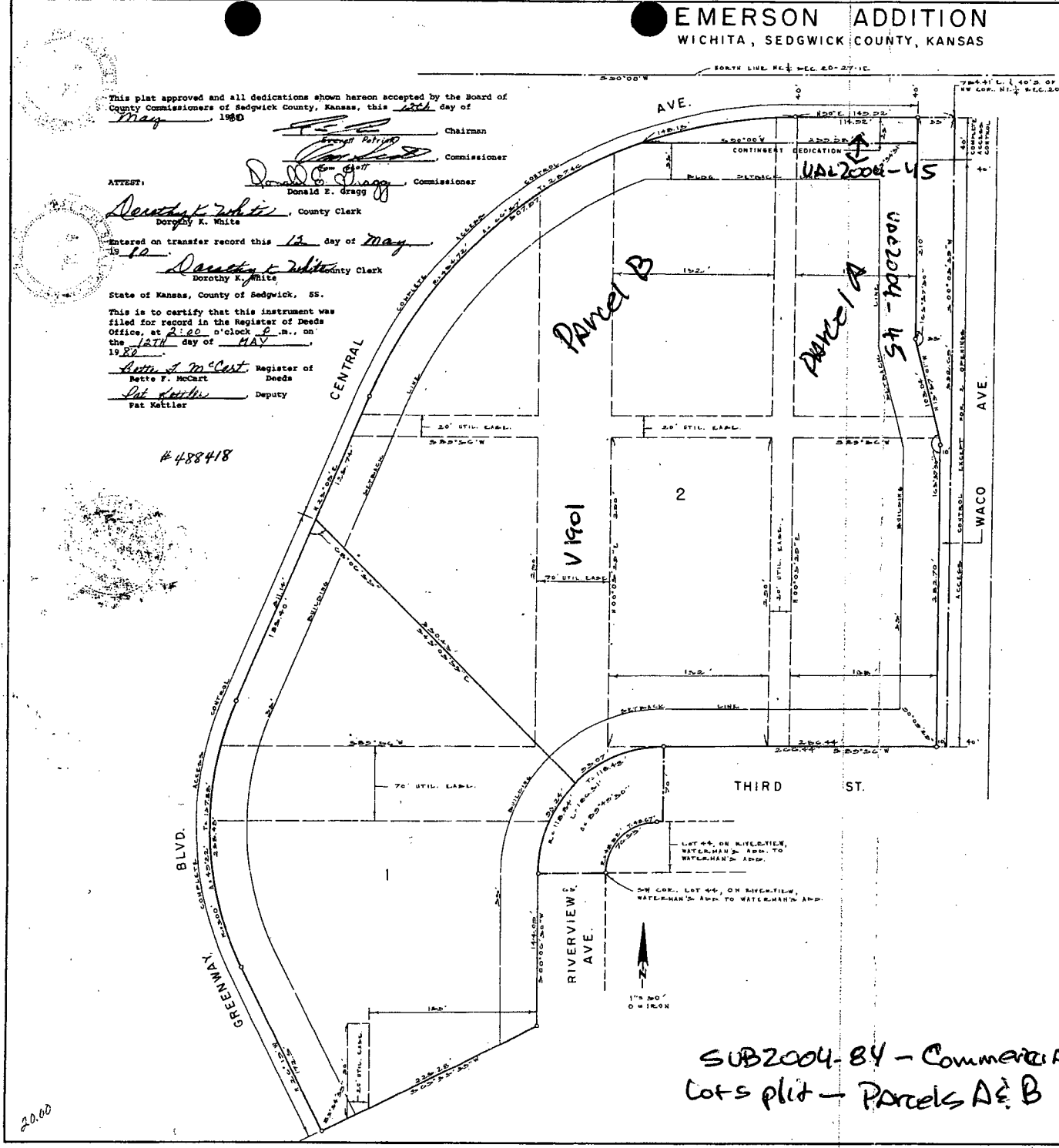
#488418

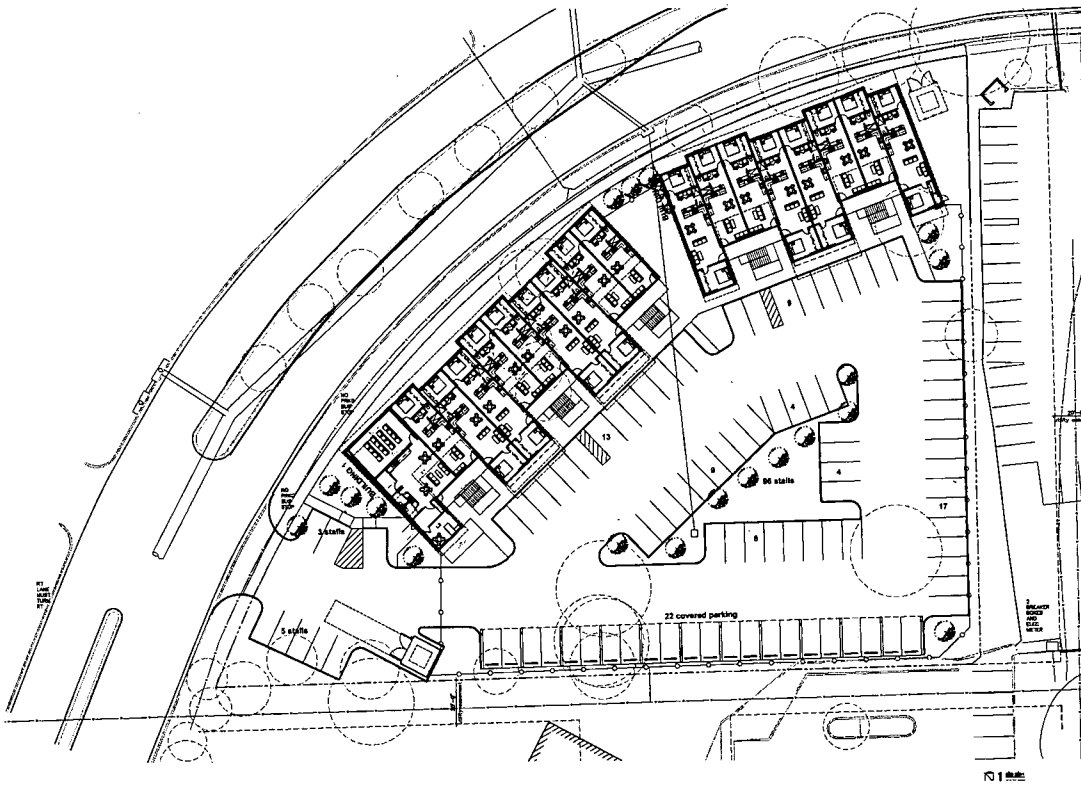
20.00

VAL2015-08

This digital plat record accurately reproduces in all details the original plat filed with the Sedgwick County Register of Deeds. Digitized under the supervision of Register of Deeds Bill Meek by Sedgwick County Geographic Information Systems.

Bill Meek, Register of Deeds
Digitized record of original signature





JAC 2015-08

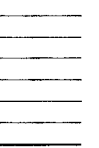


THE ARCHITECTURAL SOLUTIONS
OFFICE OF ARCHITECTURE & DESIGN



APARTMENT COMPLEX
GENERAL CONTRACTOR

24/0
FOR REVIEW



SA1.1

THE ARCHITECTURAL SOLUTIONS
OFFICE OF ARCHITECTURE & DESIGN