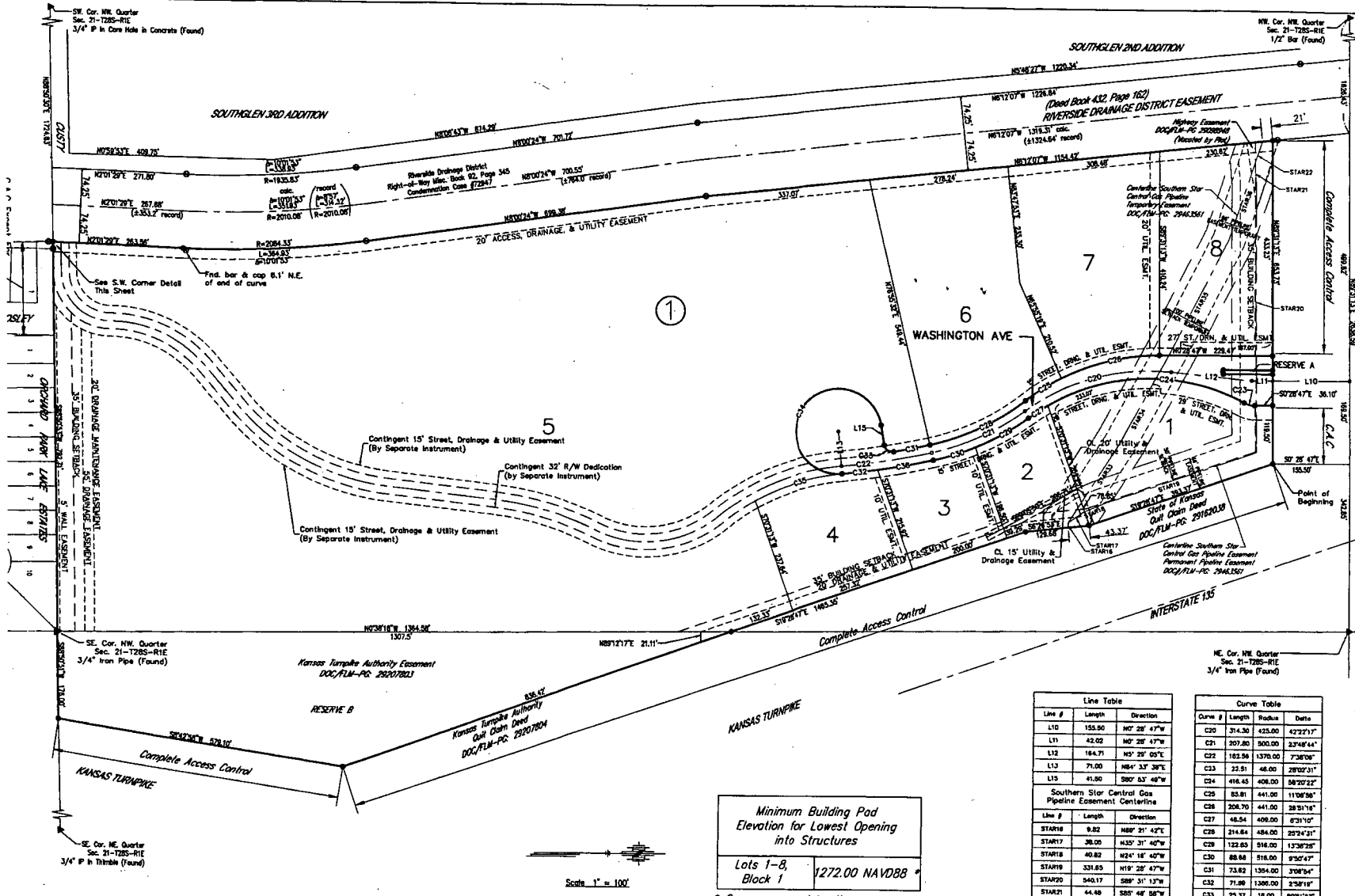


VAC 2015-38

PC 247-4A

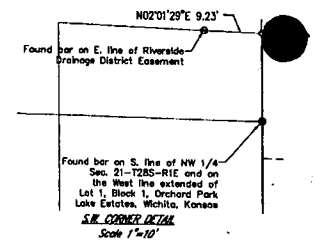


Minimum Building Pod  
Elevation for Lowest Opening  
into Structures  
Lots 1-8,  
Block 1  
1272.00 NAVD88  
\* Or as approved by the  
City Stormwater Engineer

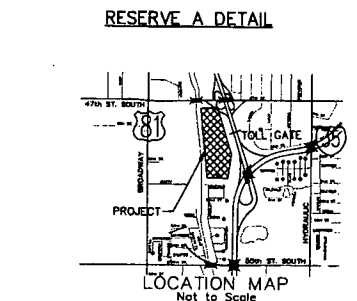
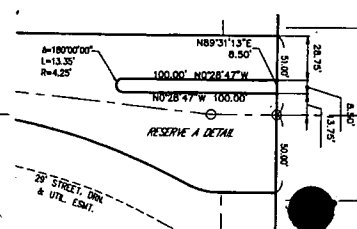
- LEGEND**
- 1 1/2" Pipe Found
  - ⊙ Manhole Bar & Cap Found
  - ▲ Section Corner Found
  - 5/8" Bar w/ Pipe Cap Set

**Bench Mark**  
City of Wichita bench mark disk 20.7' E. of E. Broadway curb and 41.5' S. of centerline Quay. Elevation 1274.71 NAVD88 (Elevation 86.82 city datum)

**Bench Mark**  
Plus cut on Southwest corner 47th St. bridge over Riverside drainage channel at end of wingwall. Elevation 1273.28



- NOTES**
- This plot is subject to the Provisions of Southfork Commercial Addition Community Unit Plan, DP-249 on file with the Metropolitan Area Planning Dept.
  - This plot is subject to a drainage plan on file with City Public Works



**Line Table**

Line #	Length	Direction
L10	155.90	N07°28'47"W
L11	42.02	N07°28'47"W
L12	184.71	N0°29'00"E
L13	71.00	N84°37'38"E
L15	41.80	S80°53'49"W

Southern Star Central Gas Pipeline Easement Centerline

Line #	Length	Direction
STAR16	9.82	N89°21'42"E
STAR17	38.00	N30°31'40"W
STAR18	40.82	N24°18'40"W
STAR19	231.85	N19°28'47"W
STAR20	940.17	S89°31'13"W
STAR21	44.40	S85°48'08"W
STAR22	48.04	N71°30'09"W
STAR23	191.98	S57°43'00"E
STAR24	209.05	S81°31'34"E
STAR25	281.50	S82°05'08"E
STAR26	208.80	S71°30'09"E

**Curve Table**

Curve #	Length	Radius	Delta
C20	314.30	425.00	42°27'17"
C21	207.80	500.00	23°48'44"
C22	182.56	1370.00	7°38'06"
C23	22.51	46.00	28°02'31"
C24	416.45	408.00	58°20'22"
C25	83.81	441.00	11°06'50"
C26	208.70	441.00	28°51'14"
C27	48.54	408.00	6°21'10"
C28	214.64	484.00	25°24'31"
C29	122.83	516.00	13°28'25"
C30	88.88	516.00	9°50'47"
C31	73.82	1354.00	3°08'34"
C32	71.86	1386.00	2°58'18"
C33	25.37	18.00	80°51'23"
C34	404.42	87.00	26°20'12"
C35	188.87	444.00	14°20'48"
C36	112.80	1386.00	4°38'47"

# SOUTHFORK COMMERCIAL ADDITION

WICHITA, SEDGWICK COUNTY, KANSAS

Date of Preparation: 8/10/2014  
P:\APR\1041\1858\Plot\_Southfork\_One\_Step\_Final\_Plot-32R.dwg

**POE & ASSOCIATES, INC.**  
CONSULTING ENGINEERS  
5640 E. Central, Suite 200 • Wichita, KS 67208-4262  
Phone 316/685-4114 • FAX 316/685-4444