

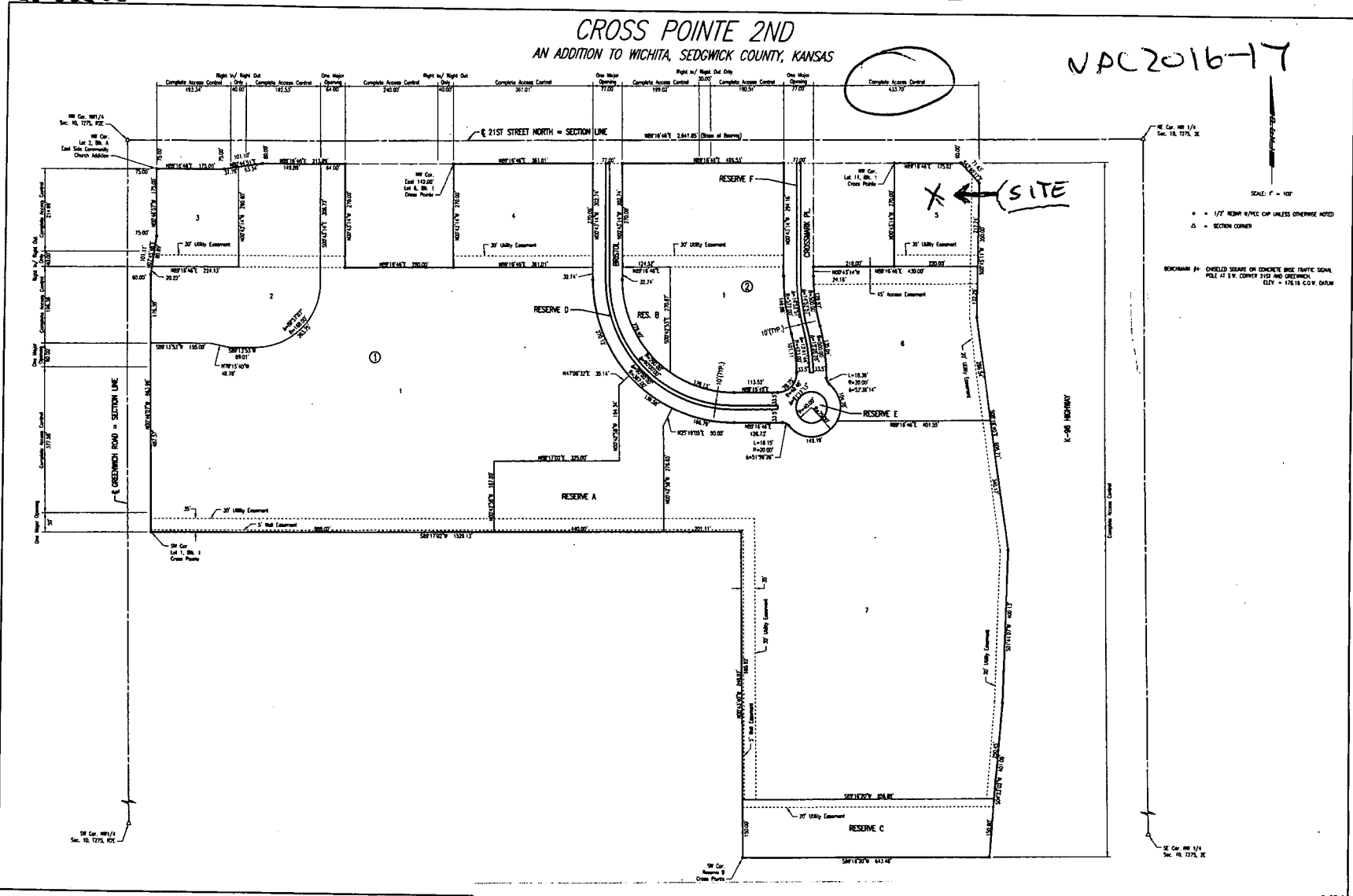
CROSS POINTE 2ND AN ADDITION TO WICHITA, SEDGWICK COUNTY, KANSAS

NAC 2016-17

SCALE: 1" = 100'

• = 1/2" ROUND IRON OR UNLESS OTHERWISE NOTED
△ = SECTION CORNER

BENCHMARK BM CHECKED EXISTING ON CONCRETE BRICK METRIC SIGN
POLE AT SW CORNER 21ST AND CEDARWOOD
ELEV. = 126.18 C.G.M. DATUM



This digital plat record accurately reproduces in all details the original plat filed with the Sedgwick County Register of Deeds. Digitized under the supervision of Register of Deeds Bill Meek by Sedgwick County Geographic Information Systems.

Bill Meek, Register of Deeds
Digitized under the supervision of the original registrant