



Wichita-Sedgwick County Metropolitan Area Planning Department

November 14, 2016

Greg & Judy Gordon
3300 Crystal
Wichita, KS 67216

Ref: VAC2016-00035 - Request to vacate a portion of a platted easement on property generally located midway between East 31st Street South & I-135, on the northeast corner of K-15 and Crystal Street (District III)

Dear Greg & Judy Gordon:

At its regular meeting on Tuesday, November 1, 2016, the Wichita City Council considered the above-referenced request. The action of the City Council was to **APPROVE** subject to the recommendation by the MAPC.

If you have any questions about this matter, please call 268-4421.

Sincerely,

Bill Longnecker
Senior Planner

BL:klw



Savoy Company, P.A.
 Land Surveyors
 www.savoyco.com

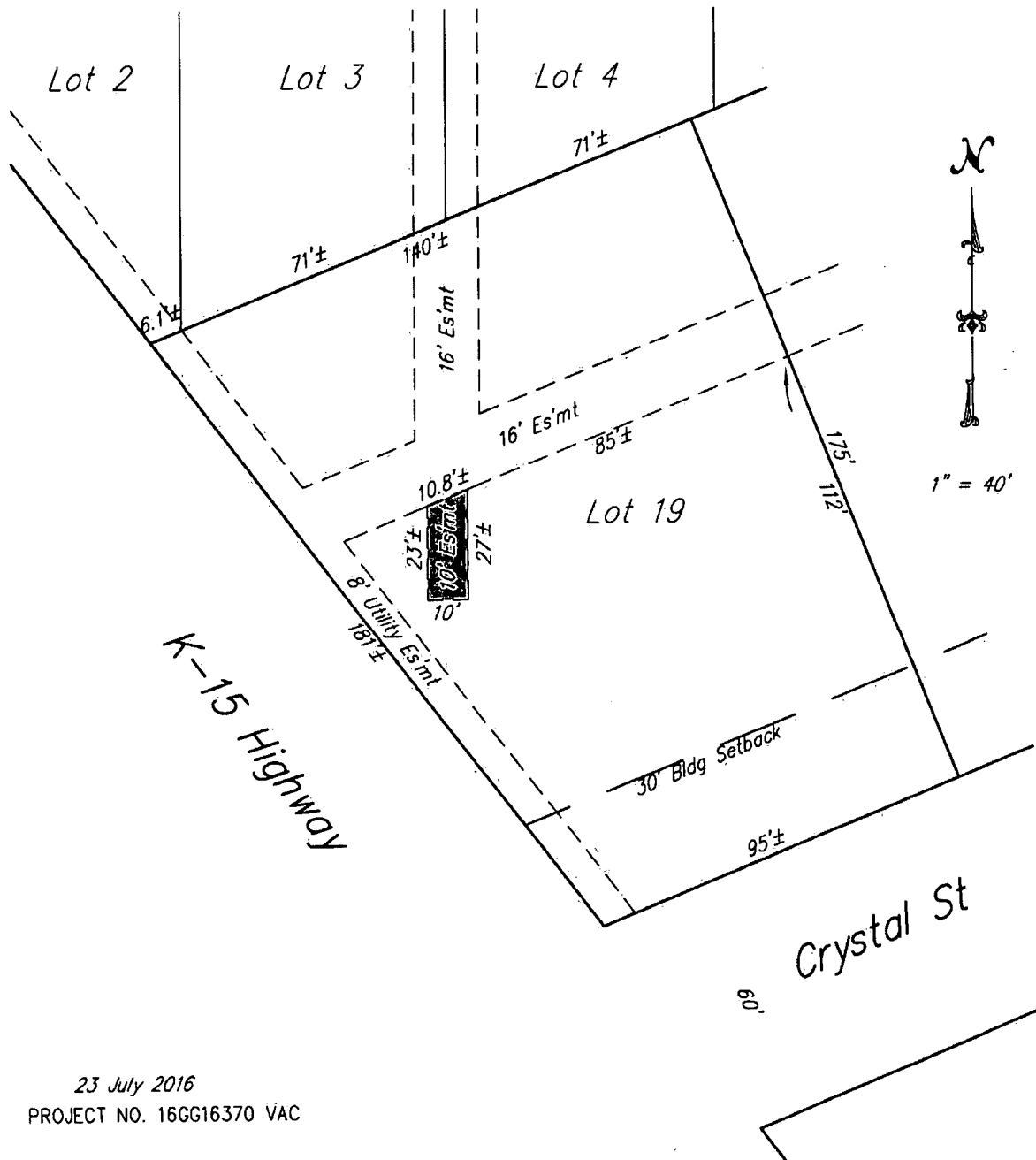
Wichita, Kansas
 433 S. Hydraulic
 Wichita, KS 67211-1911
 Tel. (316) 265-0005
 Fax. (316) 265-0275

El Dorado, Kansas
 120 N. Main, Suite 3
 El Dorado, KS 67042-2058
 Tel. (316) 452-5552
 Fax. (316) 452-5682

Exhibit

Vacation of a Portion of Utility Easement

*Lot 19, Block 1, Craig's Addition,
 Wichita, Sedgwick County, Kansas.*



23 July 2016
 PROJECT NO. 16GG16370 VAC