

CVP DP-262
APPROVAL
R. M. ...
 7-13-2025

LEGAL DESCRIPTION

Lot 6, Block 1, Hampton Square, an addition to Wichita, Sedgewick County, Kansas.

SITE INFORMATION

Total Area: 53,139.7 sq. ft. (1.18 acres)
 Disturbed Area: 51,139.7 sq. ft. (1.18 acres)
 ImperVIOUS Area, pre-constr: 50 sq. ft. (0.00 acres)
 ImperVIOUS Area, post-constr: 244,507 sq. ft. (5.57 acres)

BENCHMARKS

Site Benchmark - 1
 "C" chiseled on concrete at south entrance to orthodontic building to the north.
 Elevation = 1355.62 (NAVD 88)

Site Benchmark - 2
 "C" NW corner traffic MH pad
 Elevation = 1354.49 (NAVD 88)

Site Benchmark - 3
 Crown foot cut on south rim of drain inlet
 Elevation = 1356.47 (NAVD 88)

KANSAS ONE CALL

Contractor shall be required to provide notice to Kansas One Call at 287-2470 a minimum of three (3) working days prior to any excavation or work adjacent to utilities.
 Kansas One Call 1-800-DIG-SAFE

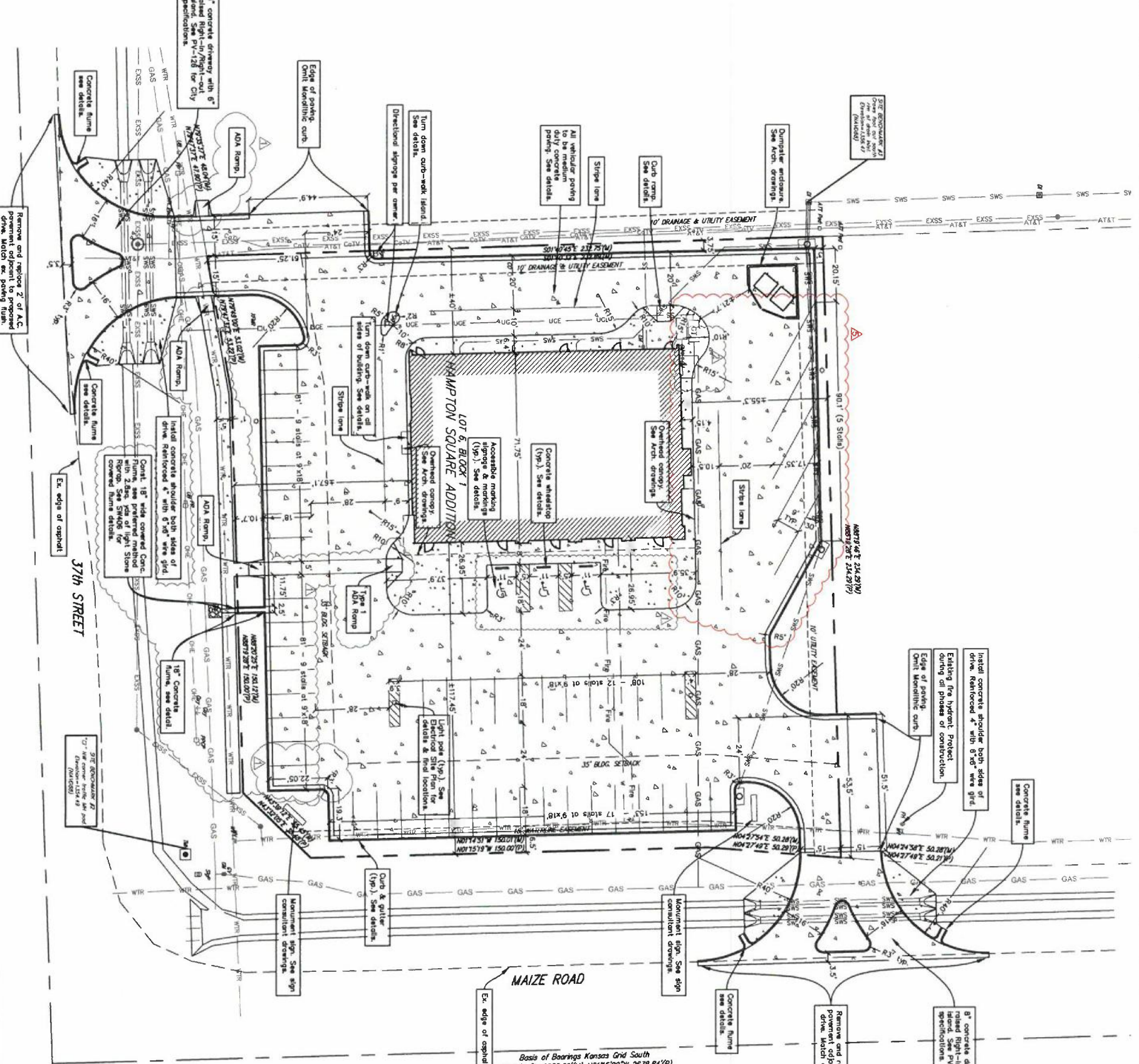
UTILITY CONTACTS

The Contractor must notify the following in case of an emergency:

Kansas Gas Service (Gas)	1-888-482-4950
Black Hills Energy (Gas)	1-800-303-0357
Energy (Electric)	383-8850
Co-K Communications (Telecommunication)	362-4370
AT&T (Telecommunication)	356-2759
City of Wichita Water Dept. (Water)	268-4563
City of Wichita Sewer Main (San. Sewer)	268-4908
City of Wichita Storm Sewer Main (Storm Sewer)	268-4024
City of Wichita Traffic Maint. (Control)	268-4090
Conoco Pipeline Co. (Petroleum)	1-800-231-2551
Williams Pipeline Co. (Petroleum)	579-6600
Phillips Pipeline Co. (Petroleum)	1-800-314-9886
	1-800-766-8130

SITE NOTES

- Existing utilities and their locations, as shown on the sheet, represent the best information obtainable for design. Location information has been obtained from the various utility companies and is either from company record drawings or company provided field locations. The Contractor will be required to work around existing utilities which do not conflict with proposed construction.
- Traffic affected by construction on this project shall be handled in accordance with the latest edition of the Manual on Uniform Traffic Control Devices (MUTCD).
- The Contractor shall provide appropriate signage throughout the sequence of construction clearly stating where construction entrances are.
- The Contractor shall take all necessary precautions to protect the general public during the construction and demolition process. This may include the use of fences and signage.
- The Contractor shall notify adjacent landowners prior to proceeding with any construction work on landowner's property.
- Signage and striping shall be installed in accordance with Local City Ordinance 20-1018. The Contractor shall comply with the Kansas Department of Transportation with the latest edition of the Standard Specifications for State Road and Bridge Construction by the Kansas Department of Transportation.
- Dimensions shown are to face of curb or edge of pavement unless otherwise noted.



SITE DIMENSION PLAN
 SCALE 20' = 1" = 20'

BAUGHMAN COMPANY
 315 E. 5th St. Wichita, KS 67211 316-263-2771
 baughmanco.com
 pb@baughmanco.com



SHELDEN ARCHITECTURE
 SHELDENARCH.COM
 800 E. First Suite 140 Wichita, KS 67202 316.263.4300

IPG-3 STRIP CENTER
IPG-3 DEVELOPMENT GROUP

3807 N. MAIZE RD MAIZE, KS 67101

PROJECT NO.	DATE
20-018	7/13/25
ISSUE	
1	7/13/25
2	7/13/25
3	7/13/25
4	7/13/25
5	7/13/25
6	7/13/25
7	7/13/25
8	7/13/25
9	7/13/25
10	7/13/25
11	7/13/25
12	7/13/25
13	7/13/25
14	7/13/25
15	7/13/25
16	7/13/25
17	7/13/25
18	7/13/25
19	7/13/25
20	7/13/25
21	7/13/25
22	7/13/25
23	7/13/25
24	7/13/25
25	7/13/25
26	7/13/25
27	7/13/25
28	7/13/25
29	7/13/25
30	7/13/25
31	7/13/25
32	7/13/25
33	7/13/25
34	7/13/25
35	7/13/25
36	7/13/25
37	7/13/25
38	7/13/25
39	7/13/25
40	7/13/25
41	7/13/25
42	7/13/25
43	7/13/25
44	7/13/25
45	7/13/25
46	7/13/25
47	7/13/25
48	7/13/25
49	7/13/25
50	7/13/25

C1.0

©2025 Sheldon Architecture, Inc.
 All Rights Reserved