

**REFERENCE MARKINGS**

- 100 ROOM NUMBERS
- Ⓜ DOOR MARK (REF: DOOR SCHEDULE)
- 10 DETAIL NUMBER (REF: SHT. IT OCCURS)
- Ⓜ DETAIL NUMBER SHEET DTL. OCCURS
- Ⓜ SECTION LETTER SHEET SECTION OCCURS
- Ⓜ WINDOW MARK
- Ⓜ METAL FRAME MARK
- Ⓜ SECTION NUMBER SHEET SECTION OCCURS

**MATERIAL KEY**

- CONCRETE
- CONCRETE BLOCK
- FACE BRICK
- EARTH
- METAL
- SAND
- GLASS-PLASTIC
- GYPSON BOARD
- ACOUSTIC TILE
- WOOD
- PLYWOOD
- WOOD
- INSULATION (FLEX)
- RIGID INSULATION
- SOLAR TILE
- CUT STONE

**GENERAL ARCHITECTURAL NOTES**

- 1. ALL CONTRACTORS TO VERIFY ALL DIMENSIONS AND CONDITIONS, INCLUDING ALL UTILITIES, PRIOR TO STARTING EACH PHASE OF WORK. ARCHITECT TO BE NOTIFIED OF ANY AND ALL DISCREPANCIES BEFORE PROCEEDING WITH THE WORK OPERATIONS.
- 2. FINISH OF EXISTING UNIT MUST SHOW WALKS AND FINISHES ABOUT VERTICAL SURFACES.
- 3. SURFACES TO BE A UNIFORM GRADE FROM BUILDING AND/OR ELEVATIONS AS SHOWN TO EXIST. CORDS.
- 4. PROVIDE 1" FALL IN FIRST 6 FT. FROM BLDG. WHERE POSSIBLE.
- 5. CONCRETE IS MODULAR - 3 BRICK COURSES + 8"
- 6. A LINE AT DOOR OPENINGS INDICATES A CHANGE IN FLOOR COVERING MATERIAL. A TRIPLE LINE INDICATES A THRESHOLD.
- 7. DRAWINGS ARE NOT TO BE SOLID EXCEPT FOR CHECKING. IF DIMENSIONS OTHER THAN THOSE PROVIDED ARE REQUESTED THEY SHALL BE PROVIDED BY THE ARCHITECT. ALL DIMENSIONS SHALL BE VERIFIED WITH ARCHITECTURAL DRAWINGS.
- 8. ALL DIMENSIONS ARE ROUGH OPENINGS UNLESS OTHERWISE NOTED - ALLOW FOR FITTINGS.
- 9. ALL STUD WALLS TO BE 2x6 @ 16" O.C. EXCEPT WHERE NOTED OTHERWISE.
- 10. GENERAL CONTRACTOR TO PROVIDE ALL TEMPORARY BRACING NECESSARY UNTIL ALL WALLS, PRECAST JOISTS, AND ROOFS ARE IN PLACE.
- 11. N.T.C. - NOT IN CONTRACT.

**SOIL BORING LOG**

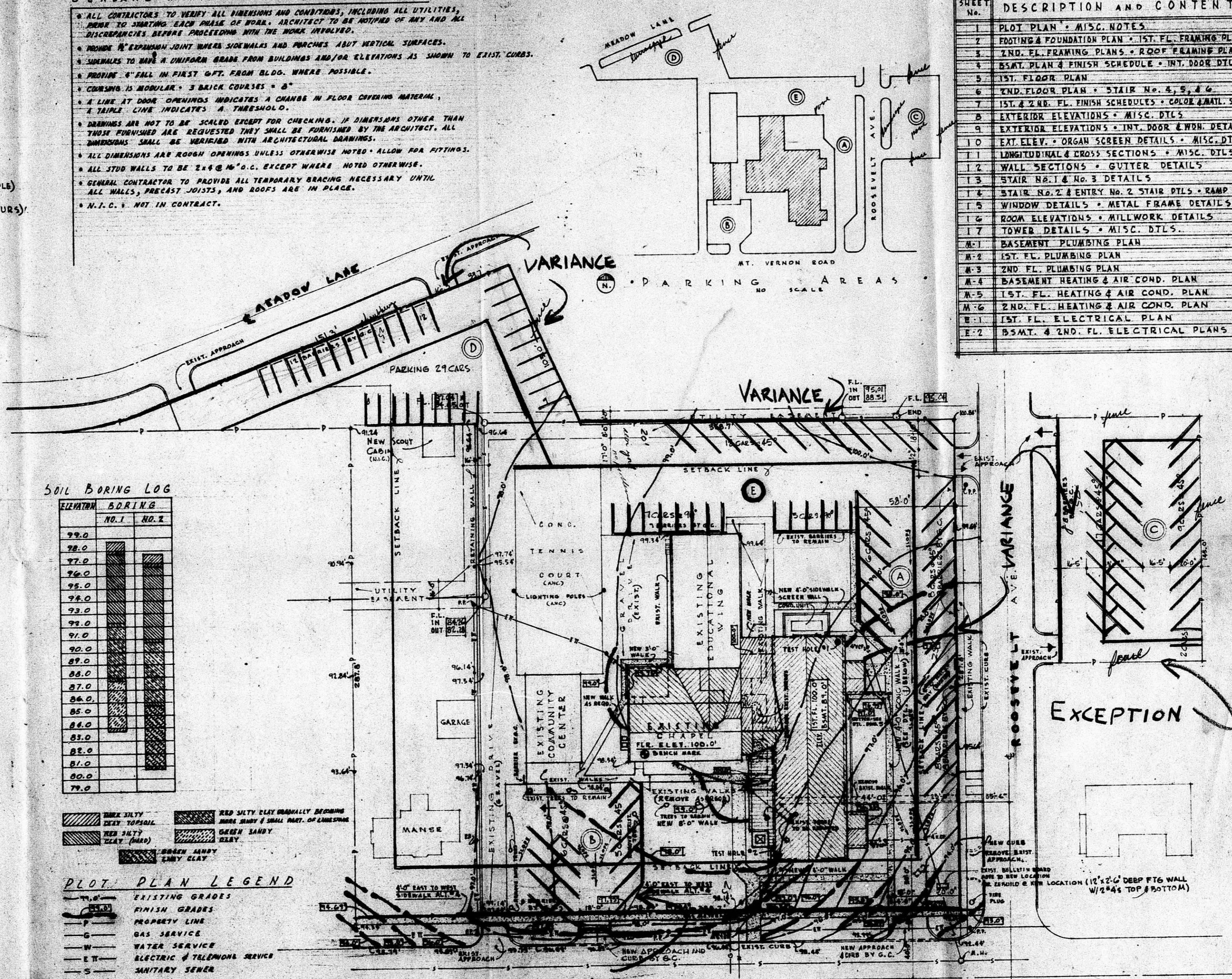
DEPTH	SOIL
0.0	NO. 1 NO. 2
1.0	RED SILTY CLAY
2.0	RED SILTY CLAY
3.0	RED SILTY CLAY
4.0	RED SILTY CLAY
5.0	RED SILTY CLAY
6.0	RED SILTY CLAY
7.0	RED SILTY CLAY
8.0	RED SILTY CLAY
9.0	RED SILTY CLAY
10.0	RED SILTY CLAY
11.0	RED SILTY CLAY
12.0	RED SILTY CLAY
13.0	RED SILTY CLAY
14.0	RED SILTY CLAY
15.0	RED SILTY CLAY
16.0	RED SILTY CLAY
17.0	RED SILTY CLAY
18.0	RED SILTY CLAY
19.0	RED SILTY CLAY
20.0	RED SILTY CLAY
21.0	RED SILTY CLAY
22.0	RED SILTY CLAY
23.0	RED SILTY CLAY
24.0	RED SILTY CLAY
25.0	RED SILTY CLAY
26.0	RED SILTY CLAY
27.0	RED SILTY CLAY
28.0	RED SILTY CLAY
29.0	RED SILTY CLAY
30.0	RED SILTY CLAY
31.0	RED SILTY CLAY
32.0	RED SILTY CLAY
33.0	RED SILTY CLAY
34.0	RED SILTY CLAY
35.0	RED SILTY CLAY
36.0	RED SILTY CLAY
37.0	RED SILTY CLAY
38.0	RED SILTY CLAY
39.0	RED SILTY CLAY
40.0	RED SILTY CLAY
41.0	RED SILTY CLAY
42.0	RED SILTY CLAY
43.0	RED SILTY CLAY
44.0	RED SILTY CLAY
45.0	RED SILTY CLAY
46.0	RED SILTY CLAY
47.0	RED SILTY CLAY
48.0	RED SILTY CLAY
49.0	RED SILTY CLAY
50.0	RED SILTY CLAY
51.0	RED SILTY CLAY
52.0	RED SILTY CLAY
53.0	RED SILTY CLAY
54.0	RED SILTY CLAY
55.0	RED SILTY CLAY
56.0	RED SILTY CLAY
57.0	RED SILTY CLAY
58.0	RED SILTY CLAY
59.0	RED SILTY CLAY
60.0	RED SILTY CLAY
61.0	RED SILTY CLAY
62.0	RED SILTY CLAY
63.0	RED SILTY CLAY
64.0	RED SILTY CLAY
65.0	RED SILTY CLAY
66.0	RED SILTY CLAY
67.0	RED SILTY CLAY
68.0	RED SILTY CLAY
69.0	RED SILTY CLAY
70.0	RED SILTY CLAY
71.0	RED SILTY CLAY
72.0	RED SILTY CLAY
73.0	RED SILTY CLAY
74.0	RED SILTY CLAY
75.0	RED SILTY CLAY
76.0	RED SILTY CLAY
77.0	RED SILTY CLAY
78.0	RED SILTY CLAY
79.0	RED SILTY CLAY
80.0	RED SILTY CLAY
81.0	RED SILTY CLAY
82.0	RED SILTY CLAY
83.0	RED SILTY CLAY
84.0	RED SILTY CLAY
85.0	RED SILTY CLAY
86.0	RED SILTY CLAY
87.0	RED SILTY CLAY
88.0	RED SILTY CLAY
89.0	RED SILTY CLAY
90.0	RED SILTY CLAY
91.0	RED SILTY CLAY
92.0	RED SILTY CLAY
93.0	RED SILTY CLAY
94.0	RED SILTY CLAY
95.0	RED SILTY CLAY
96.0	RED SILTY CLAY
97.0	RED SILTY CLAY
98.0	RED SILTY CLAY
99.0	RED SILTY CLAY
100.0	RED SILTY CLAY

**PLOT PLAN LEGEND**

- EXISTING GRADES
- FINISH GRADES
- PROPERTY LINE
- GAS SERVICE
- WATER SERVICE
- ELECTRIC & TELEPHONE SERVICE
- SEWER SERVICE

**KEY TO DRAWINGS**

SHEET No.	DESCRIPTION AND CONTENTS
1	PLOT PLAN - MISC. NOTES
2	FOOTING & FOUNDATION PLANS - 1ST FL. FRAMING PLAN
3	2ND FL. FRAMING PLANS - ROOF FRAMING PLANS
4	BSMT. PLAN & FINISH SCHEDULE - INT. DOOR DTL.
5	1ST FLOOR PLAN
6	2ND FLOOR PLAN - STAIR No. 2, 3, 4
7	1ST & 2ND FL. FINISH SCHEDULES - COLOR & MAIL SCHED.
8	EXTERIOR ELEVATIONS - MISC. DTL.
9	EXTERIOR ELEVATIONS - INT. DOOR & WDN. DETAILS
10	EXT. ELEV. - ORGAN SCREEN DETAILS - MISC. DTL.
11	LONGITUDINAL & CROSS SECTIONS - MISC. DTL.
12	WALL SECTIONS - GUTTER DETAILS
13	STAIR No. 1 & No. 3 DETAILS
14	STAIR No. 2 & ENTRY No. 2 STAIR DTL. - RAMP DTL.
15	WINDOW DETAILS - METAL FRAME DETAILS
16	ROOM ELEVATIONS - MILLWORK DETAILS
17	TOWER DETAILS - MISC. DTL.
M-1	BASEMENT PLUMBING PLAN
M-2	1ST FL. PLUMBING PLAN
M-3	2ND FL. PLUMBING PLAN
M-4	BASEMENT HEATING & AIR COND. PLAN
M-5	1ST FL. HEATING & AIR COND. PLAN
M-6	2ND FL. HEATING & AIR COND. PLAN
E-1	1ST FL. ELECTRICAL PLAN
E-2	BSMT. & 2ND FL. ELECTRICAL PLANS



**PLOT PLAN**

SCALE 1" = 50'-0"

TOPO DATA: CLYDE W. BAUGHMAN CO. WICHITA, KANSAS 2-58-64

114 CARS @ 5 = 570 PERSONS  
 NAVE - 504  
 CHAIR - 50  
 CHANCELS - 4  
 558 SEATING

- NOTE: TURN CURB RADII ON NEW APPROACHES TO MEET REQUIREMENTS OF CITY OF WICHITA.
- NOTE: P.C. TO BE 10' OF 10' EXIST. CONC. BARBERS.
- NOTE: PROVIDE A FALL IN FIRST 6' OF GRADE FROM BUILDING WHERE POSSIBLE.

**CARMICHAEL WHEATCROFT & ASSOCIATES**  
**ARCHITECTS - ENGINEERS**  
 WICHITA, KANSAS

MOUNT VERNON PRESBYTERIAN  
 CHURCH & EDUCATION UNIT  
 SOUTH ROOSEVELT AT MT. VERNON RD.  
 WICHITA, KANSAS

1-65  
 PROJECT No. 303  
 DATE 1-1-65  
 OF 17