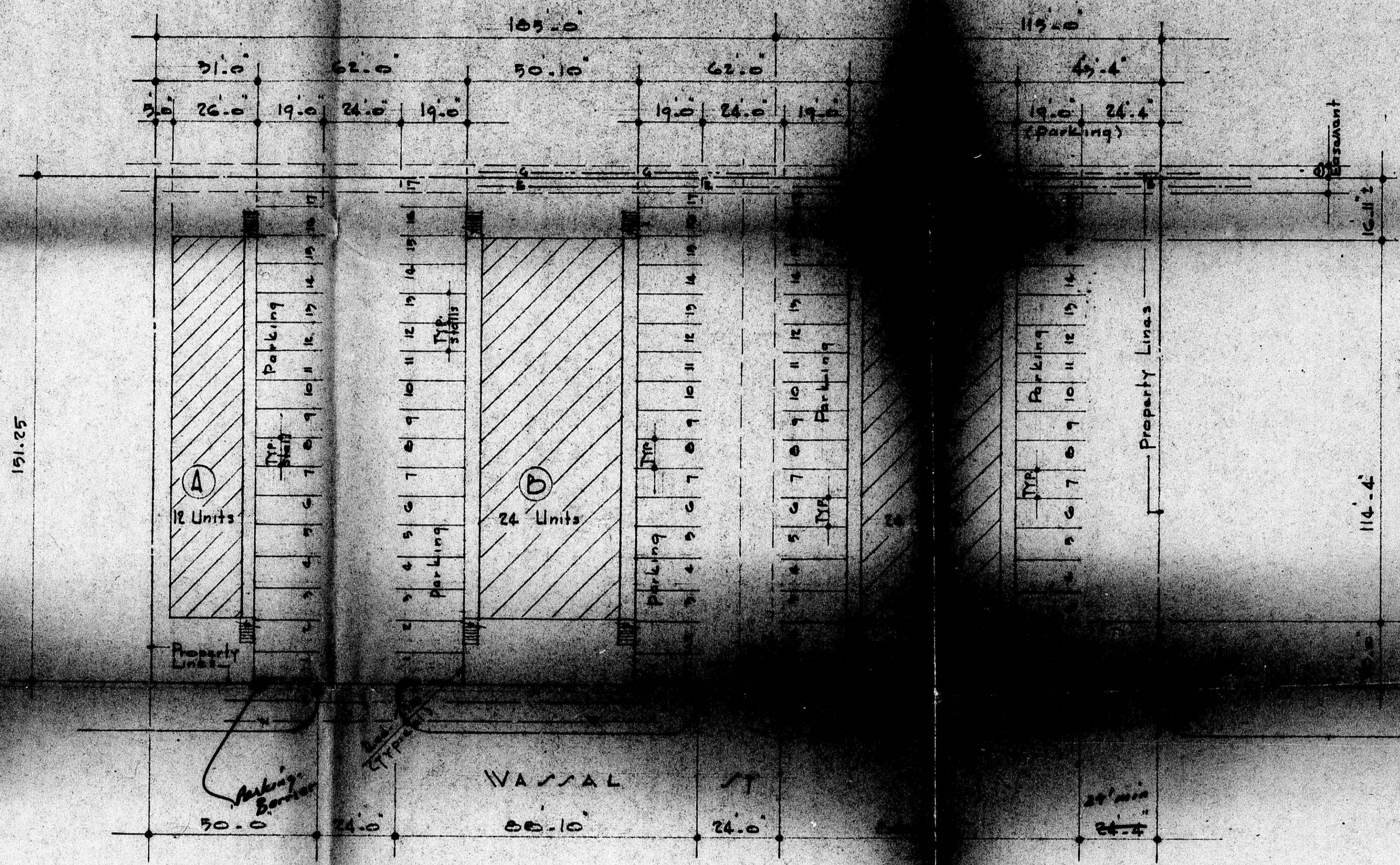


165
115
300

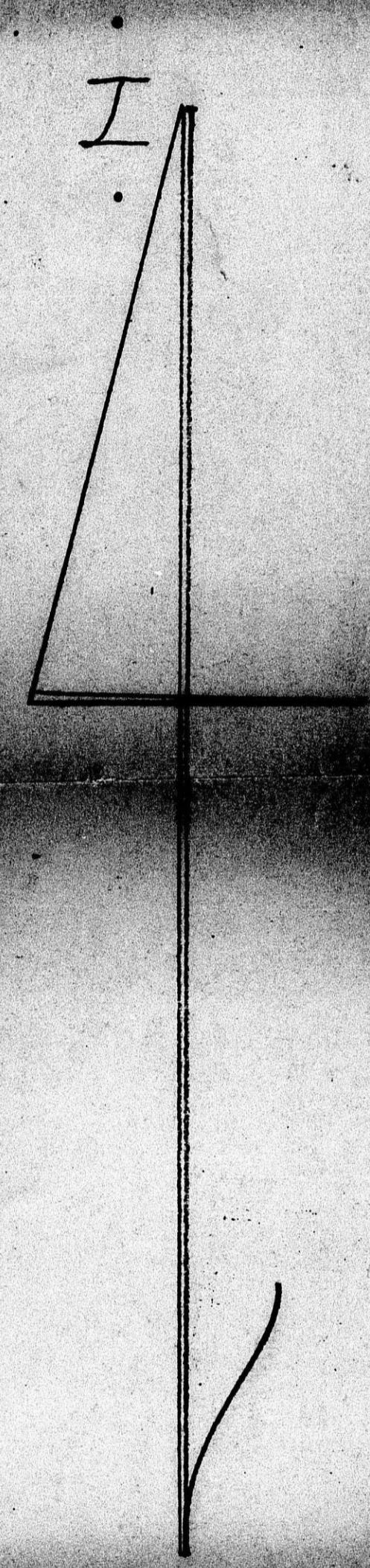


P L O T P L
 Scale 1" = 20.0'

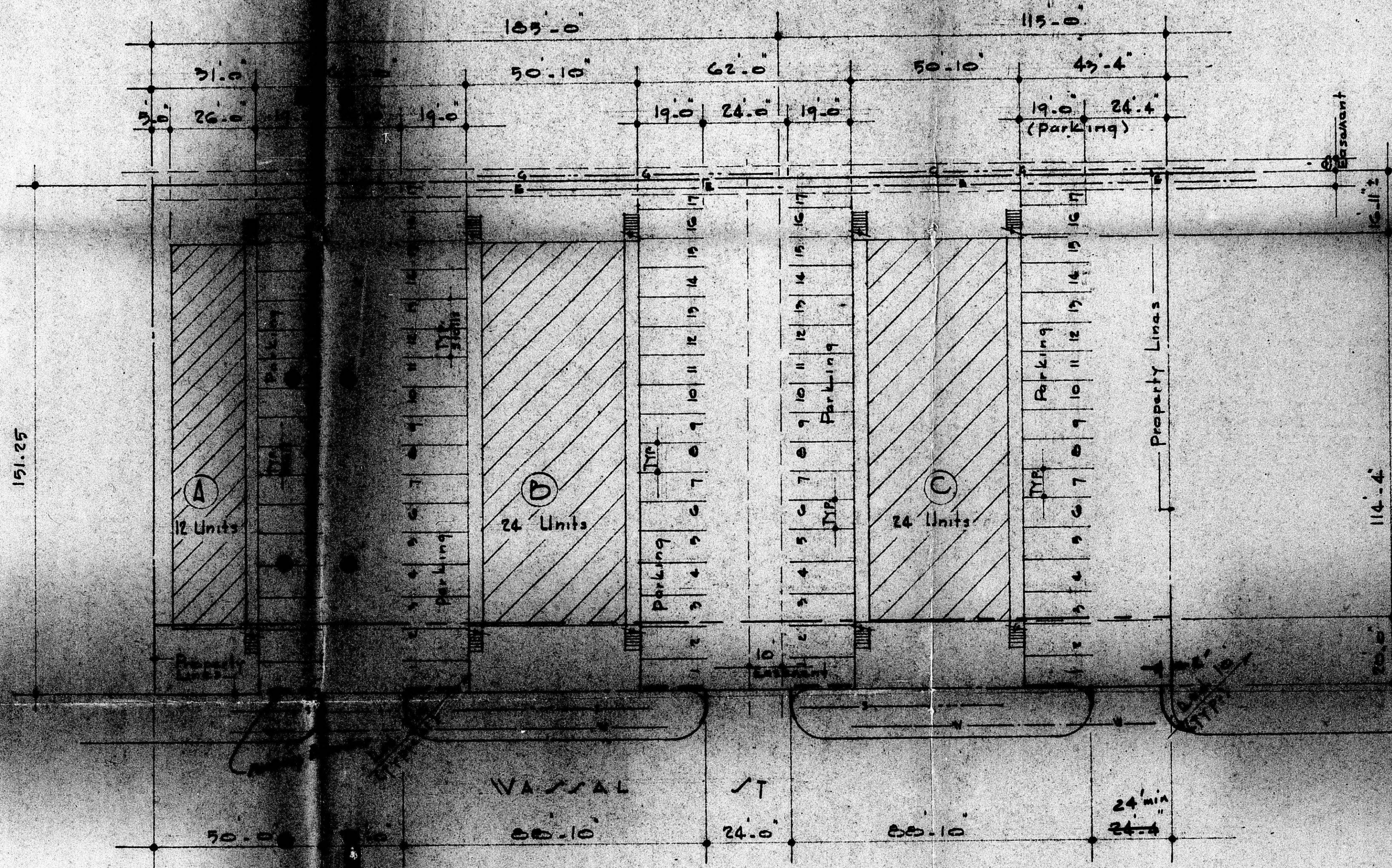
Subplat of Reynolds 6th Addition, Wichita,
 Sedgewick County, Kansas.

- o All Approaches From Street - Concrete
- o All Parking & Driveway Areas Surfaced w/ Asphalt paving.
- o Units B & C For Immediate Construction.
- o Unit A For future Construction

BZA 1-72
 TRAFFIC ENGINEERING DIVISION APPROVED
 Date 2-2-72
 (A) Parking barriers shall be installed at all locations that are adjacent to public property (so that vehicles will not obstruct public property) and have a minimum length of 6 feet and a minimum cross section of 4" x 4".
 (B) Stall lines shall be painted and 4" or greater in width.
 (C) Proper ingress and egress signs shall be installed on private property at the entrances and exits of the parking facility.



FILED FROM THE BZA
 AVAILABLE COPY



152
 8.5
 511/29/195

P L A N

Section 20.0
 Dept. of Highway 6th Addition, Wichita,
 Sedgewick County, Kansas
 o All Driveways From Street - Concrete
 o All Parking & Driveway Areas Surfaced
 w/ Asphalt Paving
 o Units B & C For Immediate Construction
 o Unit A For Future Construction

BZA 1-72
 TRAFFIC ENGINEERING DIVISION APPROVED
 Date 1-2-72
 (A) Parking barriers shall be installed at all locations that are adjacent to public property (so that vehicles will not obstruct public property) and have a minimum length of 6 feet and a minimum cross section of 4" x 4".
 (B) Stall lines shall be painted and 4" or greater in width.
 (C) Proper ingress and egress signs shall be installed on private property at the entrance and exit of the parking facility.

BZA 1-72

FILMED FROM THE BEST AVAILABLE COPY