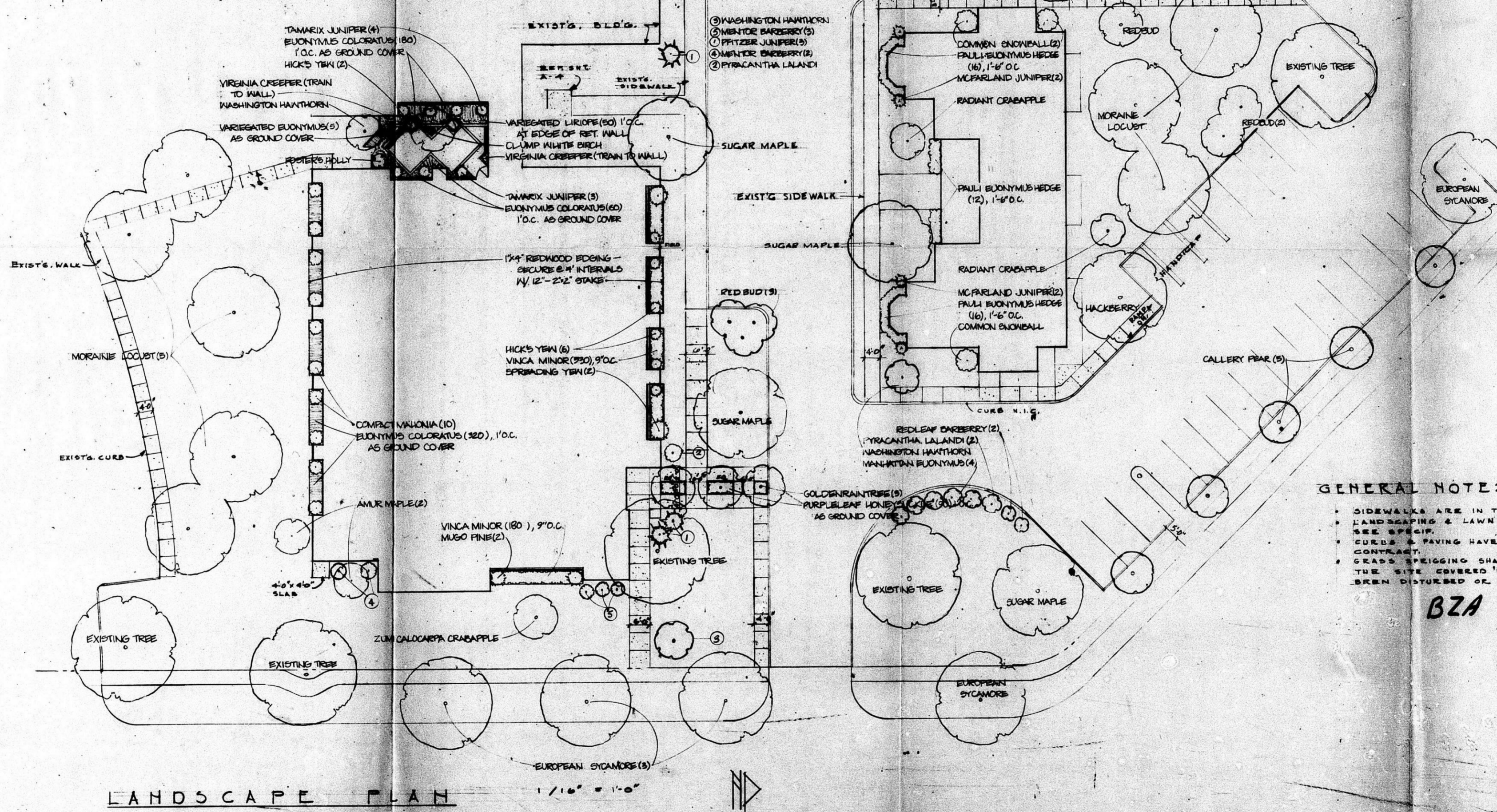


PLANT MATERIAL LIST

QUANT	COMMON NAME	BOTANICAL NAME	CONDITION	REMARKS
8	MORNING LOCUST	GLENYDIA T. MORANAE	2 1/2" DB	
5	EUROPEAN SYCAMORE	PLATANUS ACERIFOLIA	2 1/2" DB	
4	SUGAR MAPLE	ACER SACCHARUM	2 1/2" DB	EX. PAUL COLOR
1	HACKBERRY	CELTIS OCCIDENTALIS	2 1/2" DB	
3	WASHINGTON HANTHORN	CRATAEGUS PHAENOPYLIUM	1 1/2" DB	RED FRUIT (PALL)
6	REDBUD	CEBES CANADENSIS	1 1/2" DB	
5	GALLERY PEAR	PYRUS CALLERIANA 'BRANFORD'	1 1/2" DB	FRUITLESS
2	AMUR MAPLE	ACER GINNALA	1 1/2" DB	
1	ZUMI CALOCARPA CRABAPPLE	MALUS 'ZUMI CALOCARPA'	1 1/2" DB	EX. FRUIT (PALL)
1	RADIANT CRABAPPLE	MALUS 'RADIANT'	1 1/2" DB	
1	CLUMP WHITE BIRCH	BETULA PENDULA ALBA	1 1/2" DB	3-STEM
5	GOLDENRAIN TREE	KOELREUTERIA PANICULATA	1 1/2" DB	INTERESTING FRUIT
4	MCFARLAND JUNIPER	JUNIPERUS SCOPULORUM MCFARLAND	5/8" DB	
5	PITZER JUNIPER	JUNIPERUS CHINENSIS 'PITZERIANA'	5/8" DB	
7	TAMARIX JUNIPER	JUNIPERUS S. TAMARIXIOLIA	5/8" DB	
2	SPREADING YEW	TAXUS CLUSIPEDIA CENSIFORMIS	2 1/2" CONT	
8	HICKS YEW	TAXUS MEDIA HICKSI	2 1/2" CONT	
2	MUGO PINE	PINUS MUGO MUGAUS	2 1/2" DB	

PLANT MATL LIST, CONT.

QUANT	COMMON NAME	BOTANICAL NAME	CONDITION	REMARKS
1	FOOTBRED HOLLY	ILEX OPACA FOOTBRED	5 GAL. CONT.	
10	COMPACT NALONIA	NERANONIA AQUIFOLIUM COMPACTA	5 GAL. CONT.	GRAB-LIKE FRUIT
3	PYRACANTHA LALANDI	PYRACANTHA COCCINIA LALANDI	5 GAL. CONT.	ORANGE FRUIT
4	MANHATTAN BUONNYMUS	BUONNYMUS FORTUNEI 'MANHATTAN'	2 1/2" DB	
44	PAULI BUONNYMUS	BUONNYMUS FORTUNEI 'PAULI'	2 1/2" DB	
5	MENTOR DARSBERRY	ESCHERUS 'MENTOR' BERRY	2 1/2" DB	
2	REDBLAF DARSBERRY	ES. THUNBERGII ATROPURPUREA	2 1/2" DB	
3	COMMON ENONCHALL	VIOLUM OLLUM STERILE	2 1/2" DB. 2000	
20	LIRIOPE VARIANTE	LIRIOPE MISCAR (VARIANTE)	4" POTS	
5	VARIANTE BUONNYMUS	BUONNYMUS VARIANTE	1 GAL. CONT.	SILVER/GREEN
400	BUONNYMUS COLORATUS	BUONNYMUS COLORATUS	2 1/2" POTS	
710	VINCA MINOR	VINCA MINOR	2 1/2" POTS	
2	VIRGINIA CRABPERR	FRITHEOCOSMUS QUINQUEFOLIA	1 GAL. CONT.	
50	PURPLE LEAF HONEYBUCKLE	LONICERA JAPONICA HALLIANA	2 1/2" POTS	



LANDSCAPE PLAN 1/16" = 1'-0"

GENERAL NOTE:
 * SIDEWALKS ARE IN THE GENERAL CONTRACT
 * LANDSCAPING & LAWN ARE BID AS A SEPARATE CONTRACT
 * SEE SPECIF.
 * CURBS & PAVING HAVE BEEN BID AS A SEPARATE CONTRACT
 * GRASS SPREADING SHALL APPLY TO ANY PORTION OF THE SITE COVERED BY THIS DRAWING WHICH HAS BEEN DISTURBED OR FILLED IN.

BZA 3-77