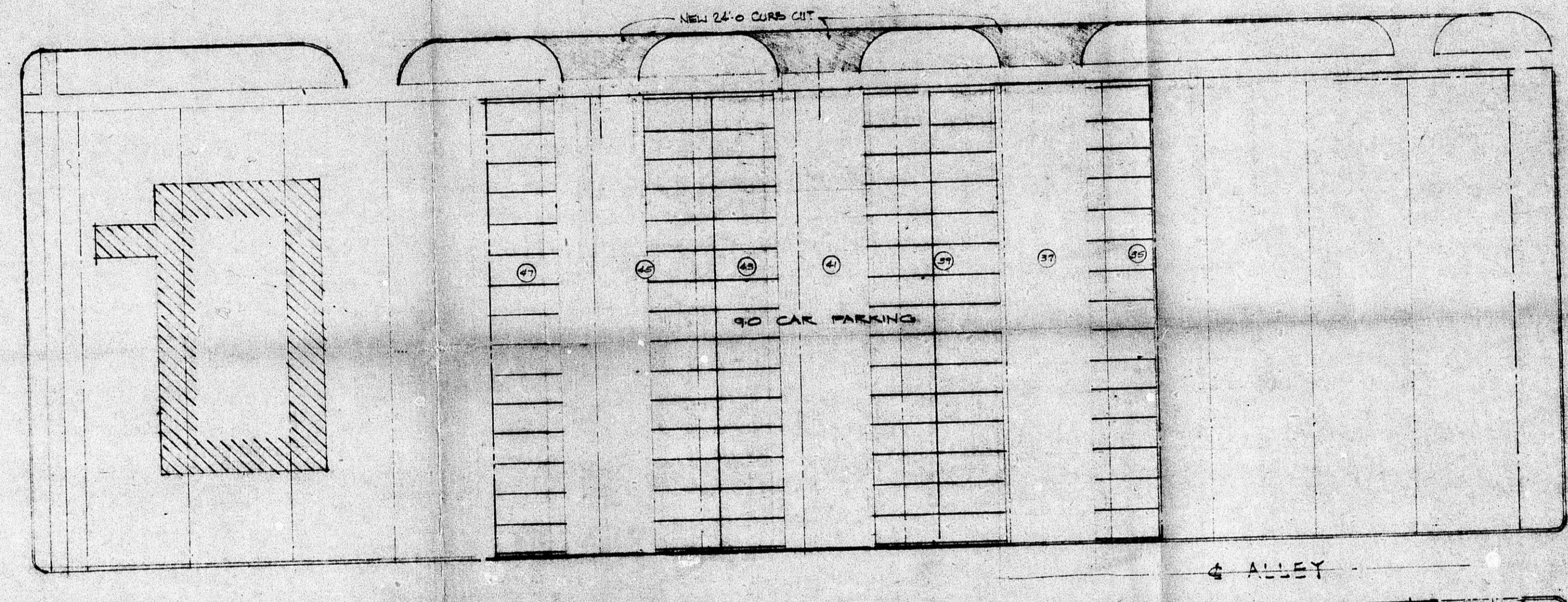
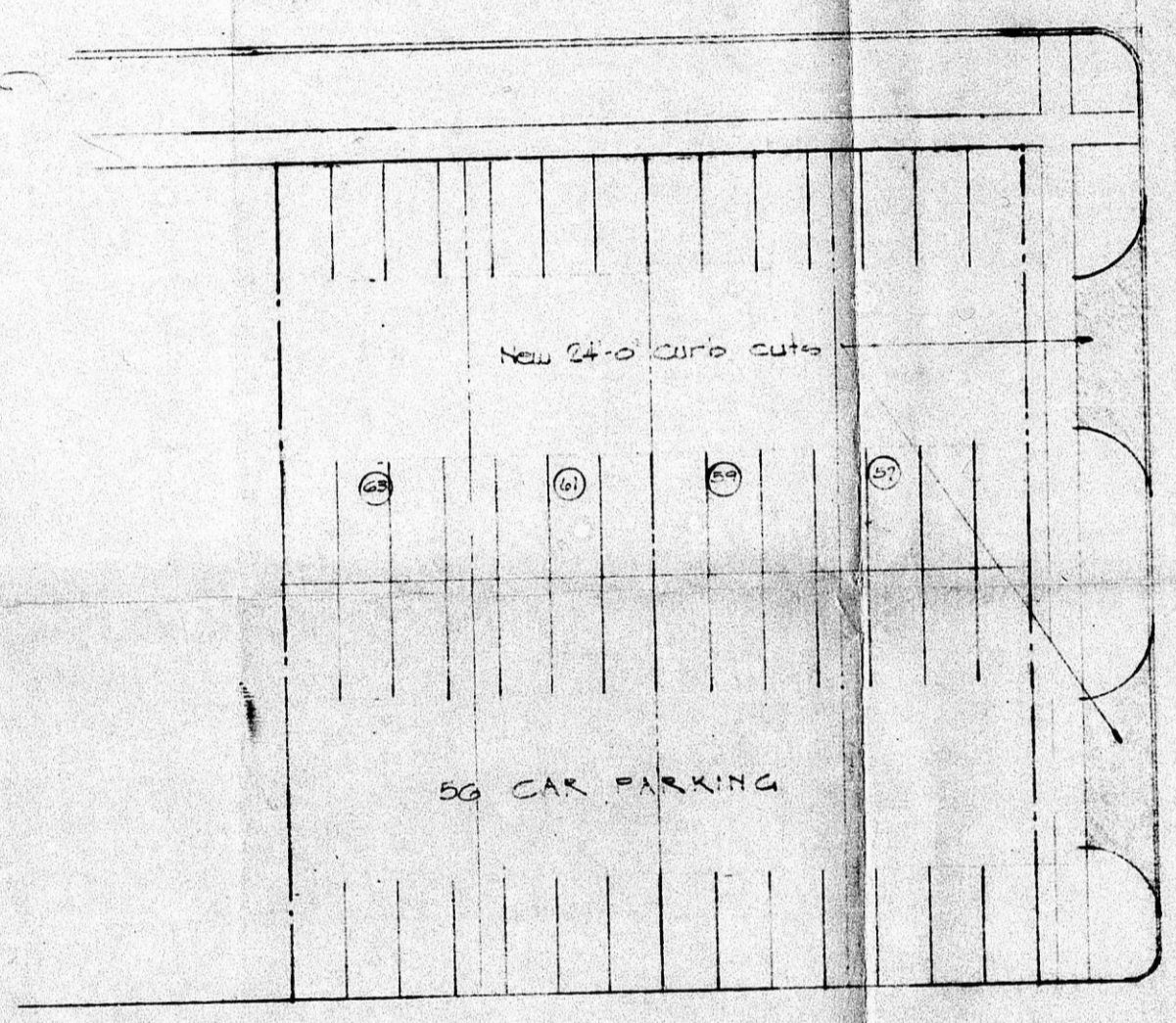
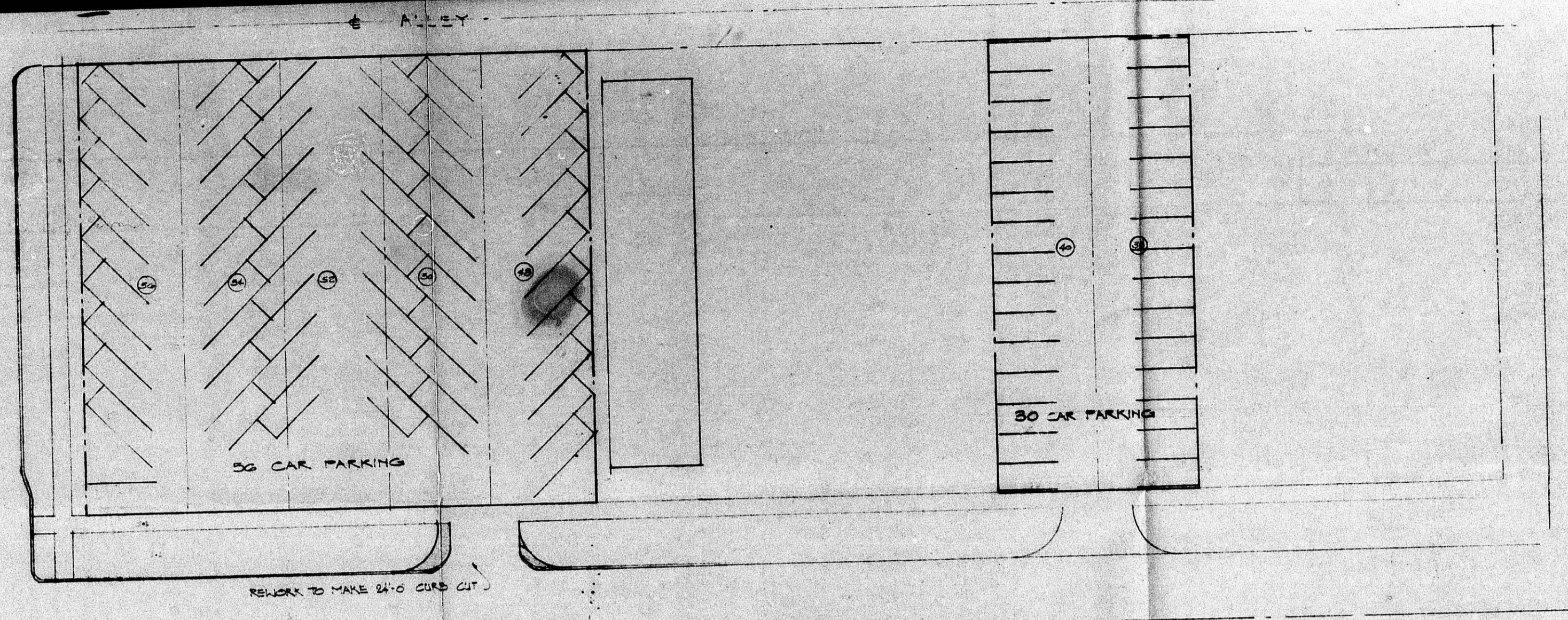
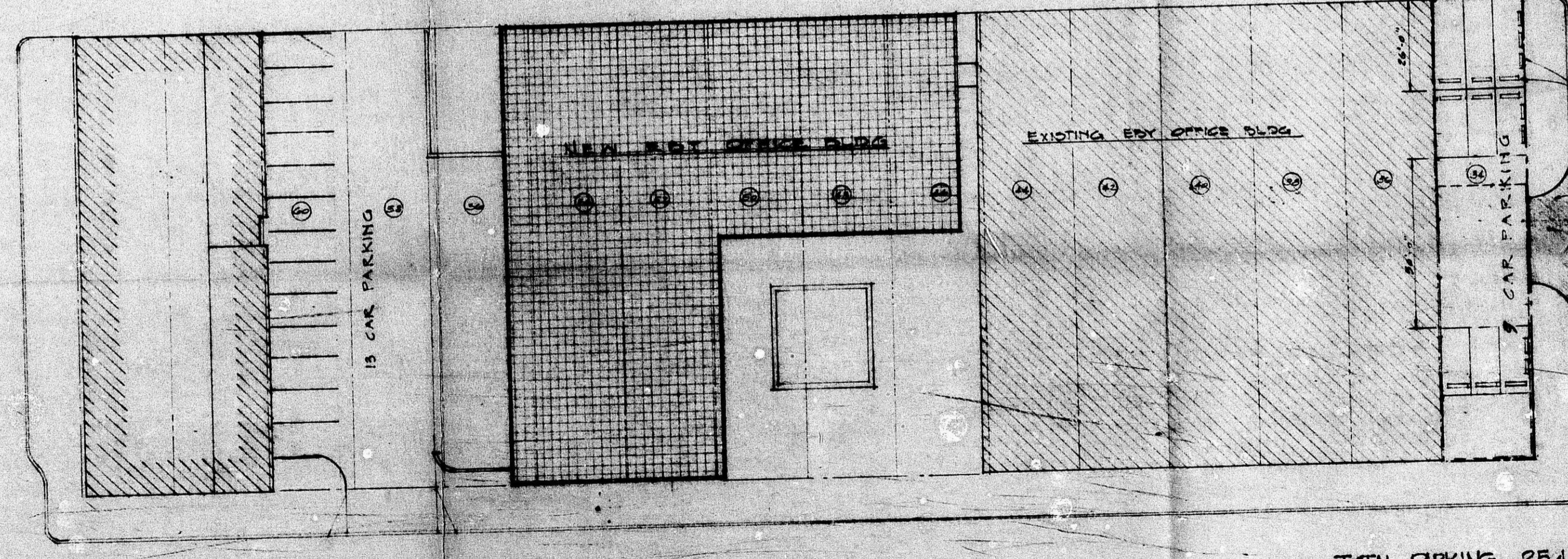


SYMBOL: ○ Designates EBY owned Lots
 STATEMENT OF OWNERSHIP
 STATE OF KANSAS } SS:
 SEDGWICK COUNTY }
 The undersigned duly bonded and qualified abstractor within and for the county and State aforesaid, does hereby certify:
 That we have examined the records in the office of the Register of Deeds of Sedgwick County, Kansas, with reference to the ownership of the following property in Sedgwick County, Kansas.
 All the owners within 200 feet of:
 Lots 34, 36, 38, 40, 42, 44, 46, 48, 50, 52, 54, 56, 58 & 60, on Main Street, and Lots 37, 39, 41, 43, 45, 47, 49, 51, 53, 55, 57, 59, 61 & 63, on Market Street, and Lots 38, 40, 42, 44, 46, 48, 50, 52, 54 & 56, on Market Street, all in MUNGER'S ORIGINAL TOWN, Sedgwick County, Kansas.
 * North and half of lot # 38



NOTE: ALL CURB CUTS TO PARKING ON THIS PLAN TO BE 24'-0" MINIMUM WIDTH, 15'-0" RADIUS & CONFORM TO CITY ORDINANCE.



NOTE: All parking stalls shall have parking blocks. Curb lines shall also have blocks. This stress is shown typically.

TOTAL PARKING 254 CARS

BZA 1-77

MARTIN K. EBY CONSTRUCTION COMPANY, INC.
 610 NORTH MAIN
 WICHITA, KANSAS

EBY OFFICE BUILDING

PARKING PLAN
 STRYKER SCALE 1"=20' 1-25-77 776-7A

FILMED FROM THE BEST AVAILABLE COPY