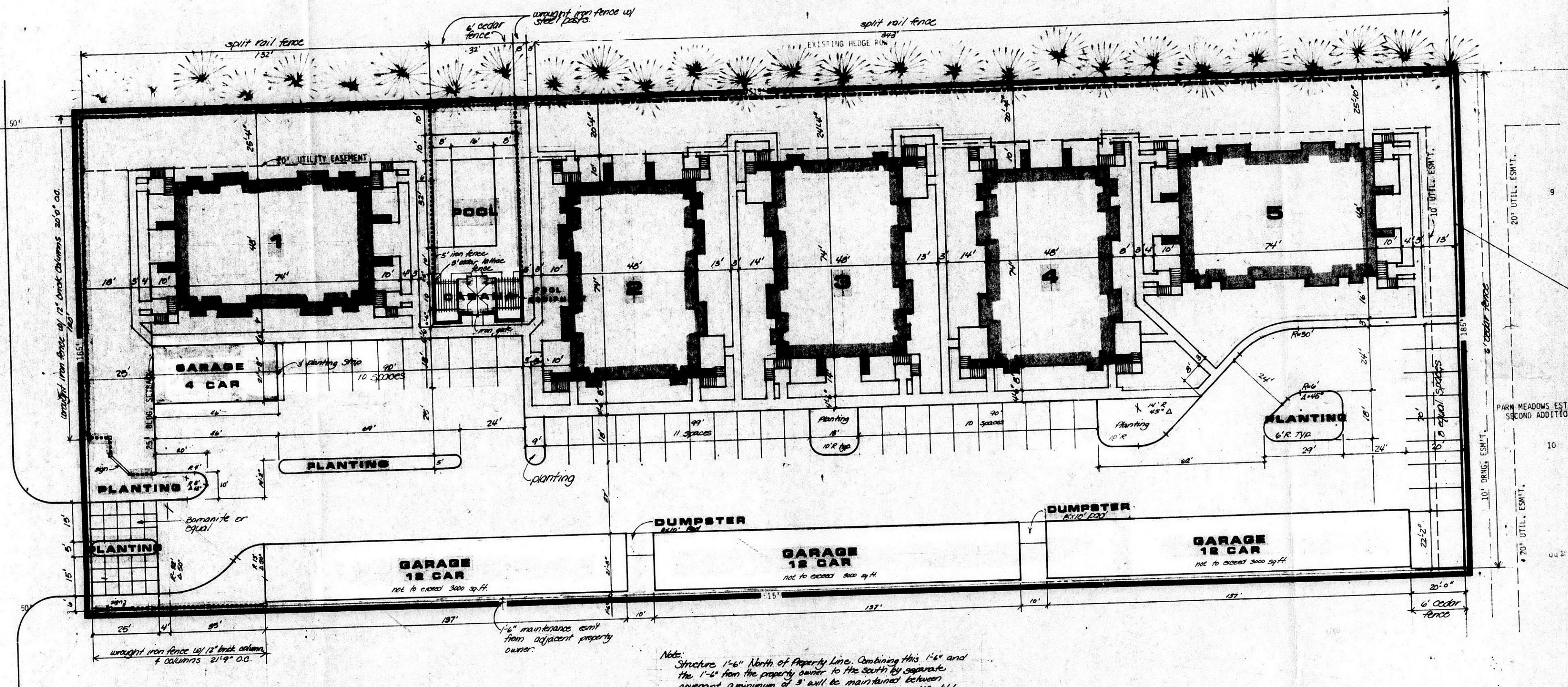


WEBB ROAD

W.B. HARRISON PARK



Note: Structure 1'-6" North of Property Line. Combine this 1'-6" and the 1'-2" from the property line to the south to separate concrete foundation of 2" will be maintained between structure for maintenance, drainage and to satisfy city code requirements.

BZA6-84

STAKING PLAN
COVENTRY EAST

OWNER: RED OAKS HOMES, INC., WICHITA, KANSAS

NOTE: ALL WALKS 4' WIDE UNLESS SHOWN OTHERWISE.
 POOL EQUIPMENT AREA TO BE ENCLOSED ON ALL SIDES BY A 6" CEDAR FENCE.
 POOL TO BE ENCLOSED BY WROUGHT IRON FENCE WITH STEEL POSTS FROM CABANA TO POOL EQUIPMENT ENCLOSURE.



BZA 6-84

Bill G. Yung Design
 ARCHITECTS
 1001 W. 17TH ST., SUITE 100
 WICHITA, KANSAS 67202

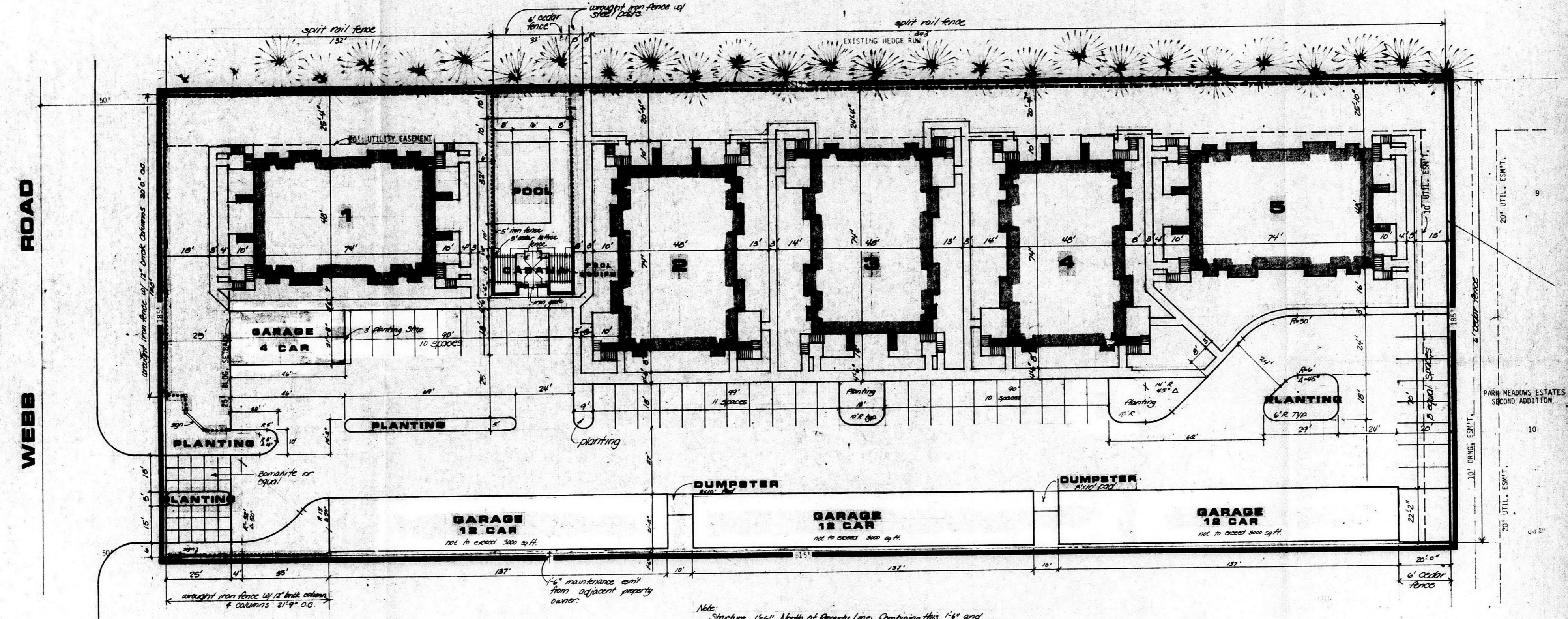
date: 27 July 83
 rev: 2 Oct 83
 rev: 7 Feb 84

sheet title
 Staking Plan

sheet
 Coventry East
 of

FILMED FROM THE BEST AVAILABLE COPY

W.B. HARRISON PARK



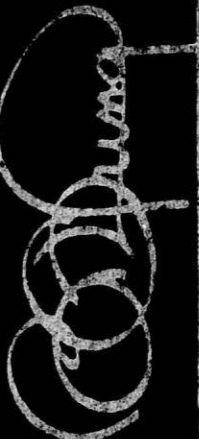
STAKING PLAN
COVENTRY EAST

OWNER: RED OAKS HOMES, INC., WICHITA, KANSAS

BZA 6-84

NOTE: ALL WALKS 4' WIDE UNLESS SHOWN OTHERWISE.
 POOL EQUIPMENT AREA TO BE ENCLOSED ON ALL SIDES BY A 6' CEDAR FENCE.
 POOL TO BE ENCLOSED BY WROUGHT IRON FENCE WITH STEEL POSTS FROM CARANA TO POOL EQUIPMENT ENCLOSURE.




Bill O. Yung Design
 ARCHITECTS
 1201 W. 17th St., Suite 100, Wichita, KS 67202
 phone 316-261-1111
 fax 316-261-1112
 date 27 July 84
 rev. 27 July 84
 sheet title
 Coventry East
 sheet
 of

FILMED FROM THE BEST AVAILABLE COPY.....