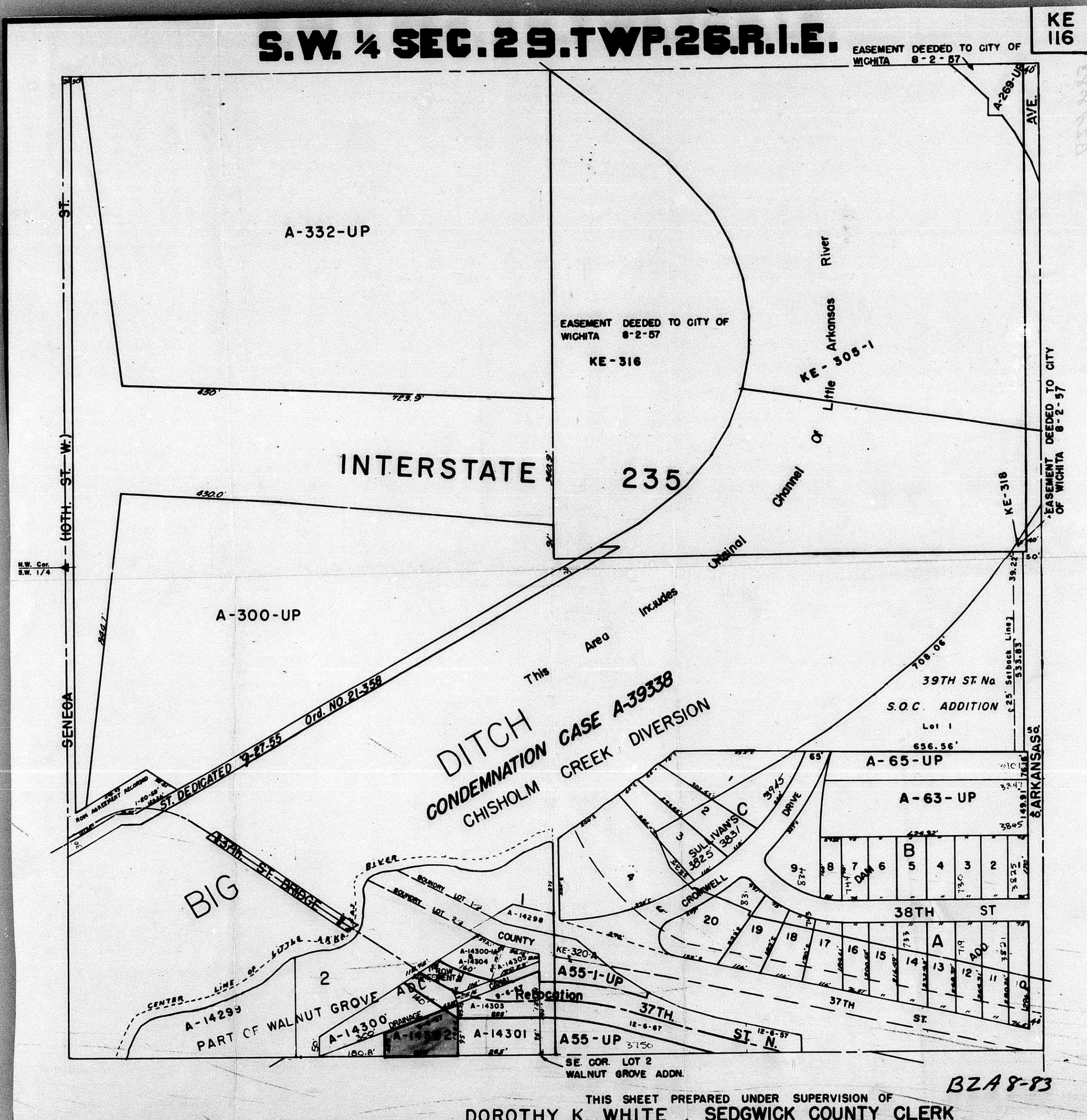


**S.W. ¼ SEC. 29. TWP. 26. R. 1. E.**

**KE 116**



THIS SHEET PREPARED UNDER SUPERVISION OF  
**DOROTHY K. WHITE, SEDGWICK COUNTY CLERK**

**B2A8-83**

FILMED FROM THE BEST AVAILABLE COPY