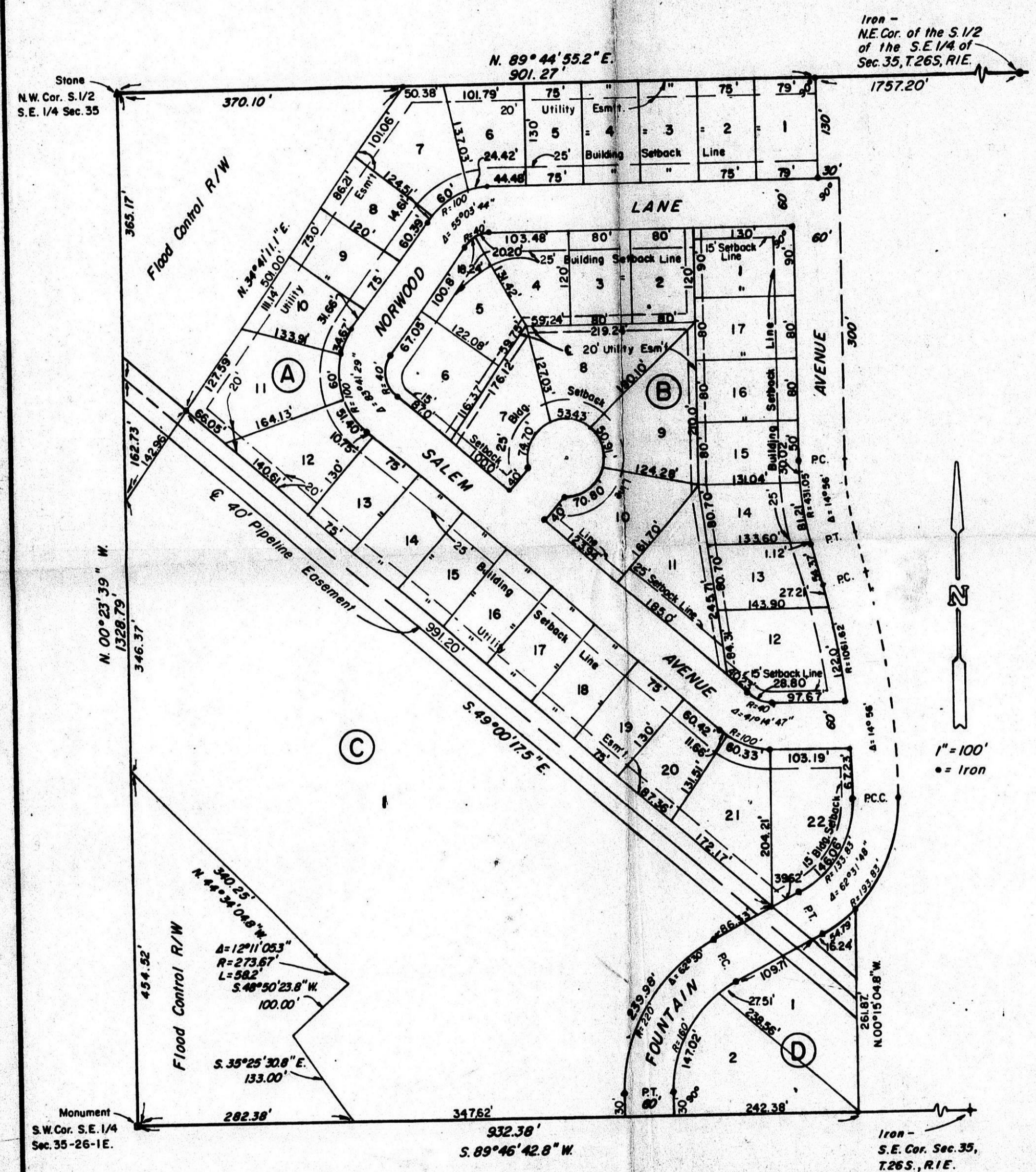


BZA 9-78

CHISHOLM PARK ESTATES SECOND ADDITION



STATE OF KANSAS, COUNTY OF SEDGWICK, SS:

I, Don C. Moehring II, a Civil Engineer in said State and County, do hereby certify that I have surveyed and platted "CHISHOLM PARK ESTATES SECOND ADDITION" to Wichita, Sedgwick County, Kansas, into Lots, Blocks, and Streets, the same being a Replat of Blocks 11, 12, 13, 14, and 15, together with vacated streets adjacent thereto, in Chisholm Park Estates to Wichita, Sedgwick County, Kansas.

Don C. Moehring II Consulting Engineer

Know all men by these presents that we the undersigned, property owners of the land as set forth in the Civil Engineers Certificate, have caused the same to be surveyed and platted into Lots, Blocks, and Streets, the same to be known as "CHISHOLM PARK ESTATES SECOND ADDITION" to Wichita, Sedgwick County, Kansas. Easements for the construction and maintenance of public utilities as indicated on the accompanying plat, are hereby granted. The Streets are hereby dedicated to and for the use of the public.

VIRDALE, INC.

Dale Frey President

Virginia J. Frey Secretary

Colby B. Sandlian

Genevieve B. Sandlian

STATE OF KANSAS, COUNTY OF SEDGWICK, SS:

Be it remembered that on this _____ day of _____, 1978, before me, a Notary Public in and for said State and County, came Virdale, Inc. by Dale Frey, President, and Virginia J. Frey, Secretary, and also came Colby B. Sandlian and Genevieve B. Sandlian, his wife, to me personally known to be the same persons who executed the foregoing instrument of writing and duly acknowledged the execution of the same. In testimony whereof I have hereunto set my hand and affixed my notarial seal the day and year above written.

Velma Beder Notary Public

My commission expires 18 August 1978

This plat of "CHISHOLM PARK ESTATES SECOND ADDITION" has been submitted to and approved by the Wichita-Sedgwick County Metropolitan Area Planning Commission. Dated this _____ day of _____, 1978.

WICHITA-SEDGWICK COUNTY METROPOLITAN AREA PLANNING COMMISSION

Majorie L. Taylor Chairman

Robert A. Lakin Secretary

This plat has been approved and all dedications shown hereon, if any, accepted by the City Commission of the City of Wichita, Kansas, this _____ day of _____, 1978.

Tony Casado Mayor

Donald C. Gislack City Clerk

This plat has been approved and all dedications shown hereon, if any, accepted by the Board of County Commissioners of Sedgwick County, Kansas, this _____ day of _____, 1978.

Everett Patrick Chairman

John Hale Commissioner

Tom Scott Commissioner

Attest: Dorothy K. White County Clerk

STATE OF KANSAS, COUNTY OF SEDGWICK, SS:

This is to certify that this instrument was filed for record in the Register of Deeds Office at _____ on the _____ day of _____, 1978.

Bette F. McCart Register of Deeds

Pat Kettler Deputy

Entered on transfer record this _____ day of _____, 1978.

Dorothy K. White County Clerk

FILED FROM THE AVAILABLE COPY

