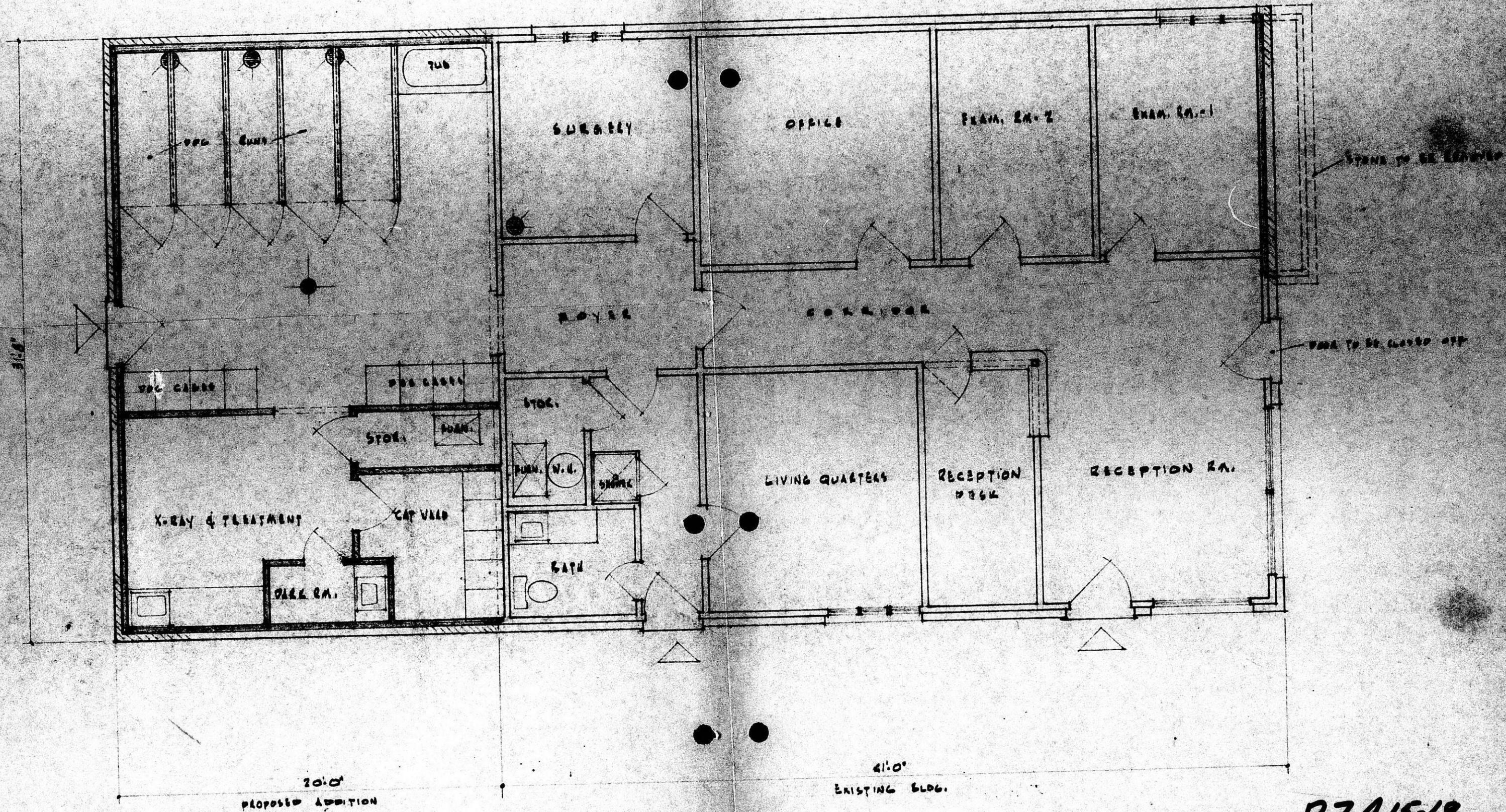


BZA 15-69

**OFFICE COPY
DO NOT REMOVE**

BZA 15-69

**FILMED FROM THE BEST
AVAILABLE COPY**



- NOTES:**
- 1) ADDITION TO EXISTING BLDG. TO BE BY SIMILAR MATERIALS CONSTRUCTION.
 - 2) ALL CONDUITS & PIPING TO MEET CITY CODE REQUIREMENTS.
 - 3) ALL FACILITIES FOR PETS TO BE INCLUDED WITHIN BLDG.
 - 4) ALL DRAINAGE RUNS TO BE INSIDE BLDG.
 - 5) OCCUPANT ASSURES THERE WILL BE NO OFFENSIVE ODDOR OR NOISES TO SURROUNDING DWELLINGS.

FLOOR PLAN
SCALE 1/4" = 1'-0"

BZA 15-69
PROPOSED ADDITION TO
CRESTVIEW ANIMAL CLINIC
LAWSON, ILL. FOR WILKINSON BLVD.
VOIGT INVESTMENT CO.
J. P. FINNEY - BUILDING DESIGN SERVICE
1151 E. WILSON - WICHITA, KANSAS
6-7-69

FILMED FROM THE BEST AVAILABLE COPY