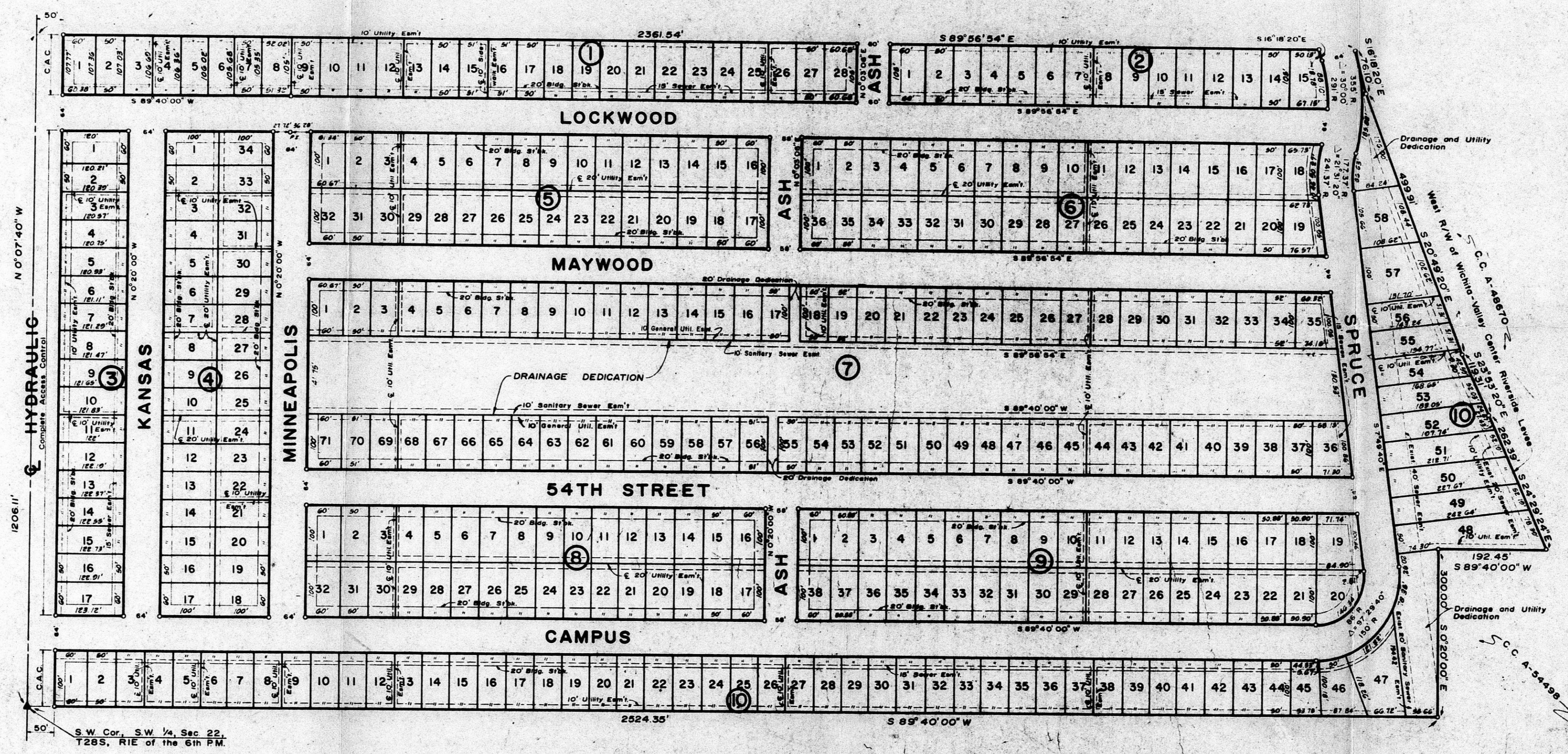


RIVER OAKS ADDITION

TO WICHITA, SEDGWICK COUNTY, KANSAS

BZA 15-82



SCALE: 1"=100'
 DATE: August 22, 1980
 B.M. - 78.57 City bench mark disc.
 44' W and 30' S. of Highway
 and 55th St. So.
MINIMUM PAD ELEVATIONS
 All Lots - 78.60'

BZA 15-82

Restrictive Covenants F 450 pg. 558

PAGE 2 OF 2

FILMED FROM THE BEST AVAILABLE COPY