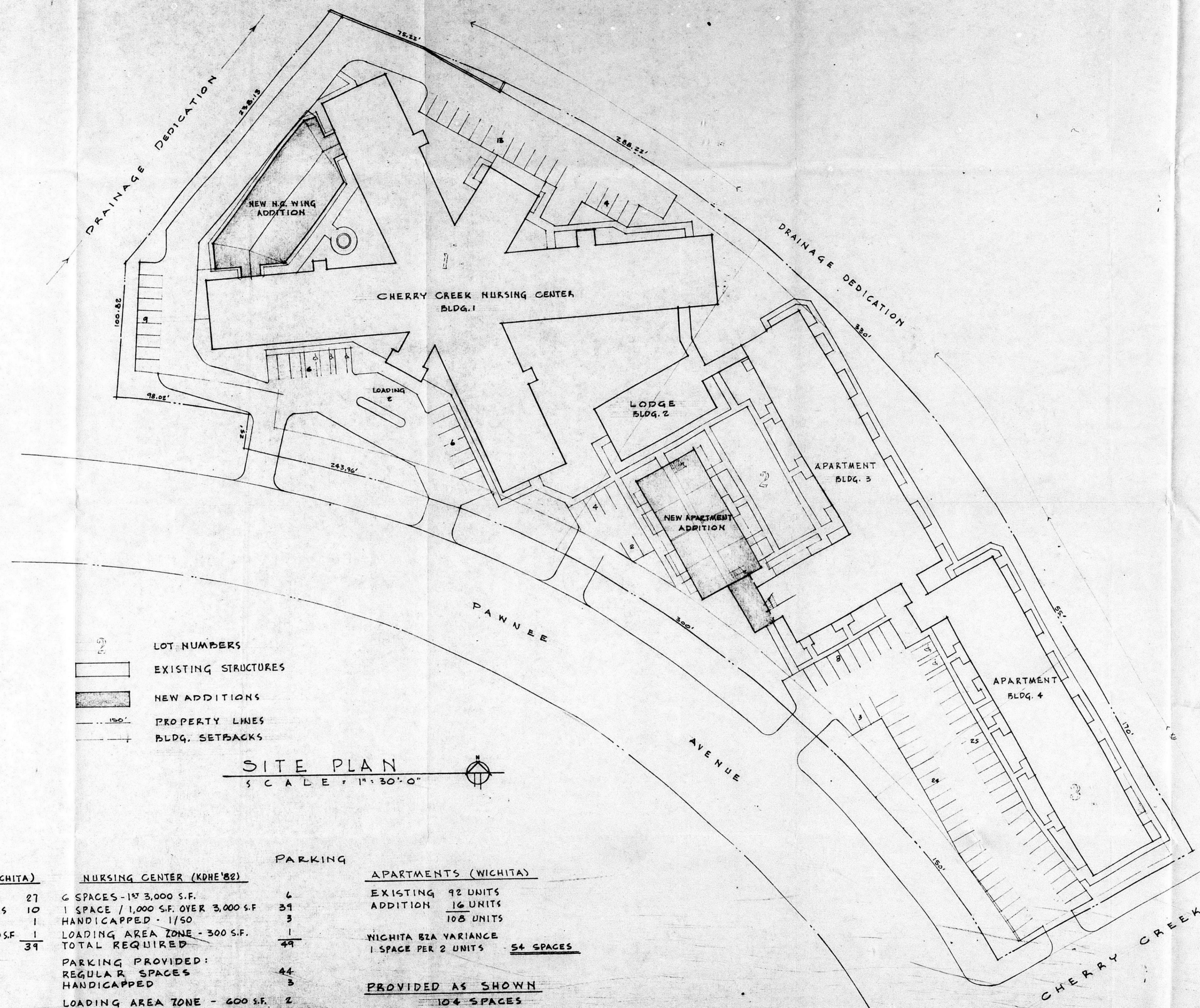




ADDITIONS TO
CHERRY CREEK VILLAGE
8100 E. PAWNEE, WICHITA, KANSAS



- LOT NUMBERS
- EXISTING STRUCTURES
- NEW ADDITIONS
- PROPERTY LINES
- BLDG. SETBACKS

SITE PLAN
SCALE: 1" = 30'-0"

LEGAL:
LOTS 1, 2, 3, BLOCK 2,
CHERRY CREEK HILLS
ADDITION TO WICHITA,
SEDGWICK COUNTY, KS.

SURVEY DATA:
BAUGHMAN COMPANY
26 JANUARY 1978

BZA 17-85

NURSING CENTER (WICHITA)

1 SPACE / 5 BEDS	27
1 SPACE / 5 EMPLOYEES	10
1 / 50 HANDICAPPED	1
LOADING ZONE 18300 S.F.	1
TOTAL REQUIRED	39

NURSING CENTER (KDHE'82)

6 SPACES - 10' 3,000 S.F.	6
1 SPACE / 1,000 S.F. OVER 3,000 S.F.	33
HANDICAPPED - 1/50	3
LOADING AREA ZONE - 300 S.F.	1
TOTAL REQUIRED	43

PARKING

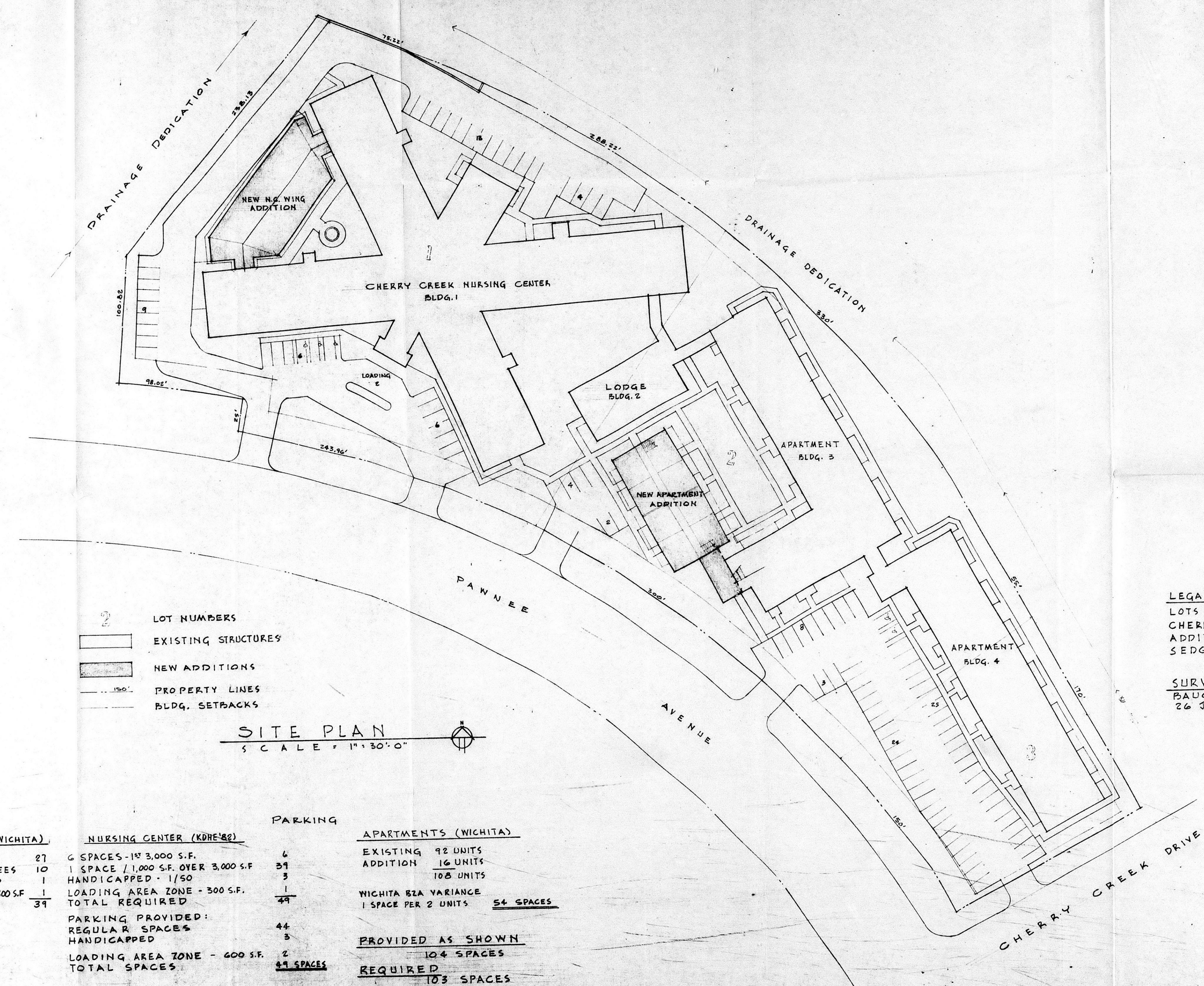
REGULAR SPACES	44
HANDICAPPED	3
LOADING AREA ZONE - 600 S.F.	2
TOTAL SPACES	49 SPACES

APARTMENTS (WICHITA)

EXISTING 92 UNITS	
ADDITION 16 UNITS	
108 UNITS	
WICHITA BZA VARIANCE	
1 SPACE PER 2 UNITS	54 SPACES

PROVIDED AS SHOWN
104 SPACES
REQUIRED
103 SPACES

CAMMARE / ASSOCIATES, P.A.
ARCHITECTURE
A.I.A.



- 2 LOT NUMBERS
- EXISTING STRUCTURES
- NEW ADDITIONS
- PROPERTY LINES
- BLDG. SETBACKS

SITE PLAN
SCALE 1" = 30'-0"

LEGAL:
LOTS 1, 2, 3, BLOCK 2,
CHERRY CREEK HILLS
ADDITION TO WICHITA,
SEDGWICK COUNTY, KS.

SURVEY DATA:
BAUGHMAN COMPANY
26 JANUARY 1978

NURSING CENTER (WICHITA)		NURSING CENTER (KDHE '82)		PARKING		APARTMENTS (WICHITA)	
1 SPACE / 5 BEDS	27	6 SPACES - 13,000 S.F.		4	EXISTING	92 UNITS	
1 SPACE / 5 EMPLOYEES	10	1 SPACE / 1,000 S.F. OVER 3,000 S.F.		39	ADDITION	16 UNITS	
1 / 50 HANDICAPPED	1	HANDICAPPED - 1 / 50		3		108 UNITS	
LOADING ZONE 1 @ 300 S.F.	1	LOADING AREA ZONE - 300 S.F.		1	WICHITA BZA VARIANCE		
TOTAL REQUIRED	39	TOTAL REQUIRED		49	1 SPACE PER 2 UNITS	54 SPACES	
		PARKING PROVIDED:					
		REGULAR SPACES		44	PROVIDED AS SHOWN		
		HANDICAPPED		5	104 SPACES		
		LOADING AREA ZONE - 600 S.F.		2	REQUIRED		
		TOTAL SPACES		51 SPACES	103 SPACES		

ADDITION TO CHERRY CREEK VILLAGE
 CHERRY CREEK HILLS
 WICHITA, KANSAS
 8100 E. PAWNEE AVENUE

CAMACHAR/ASSOCIATES, P.A.
 ARCHITECTURE
 3711 EAST BOWMAN
 WICHITA, KANSAS 67211
 A.I.A.