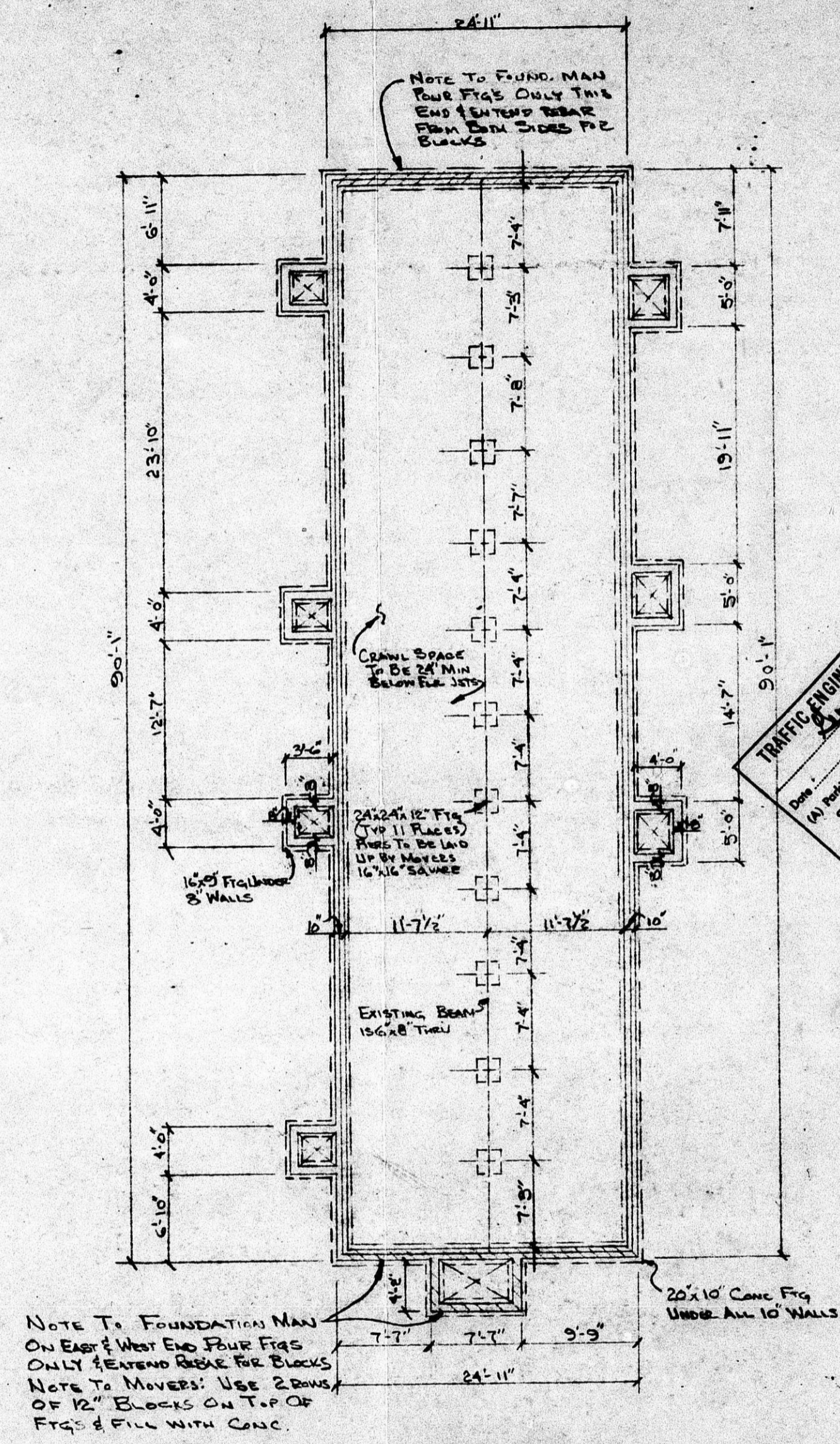
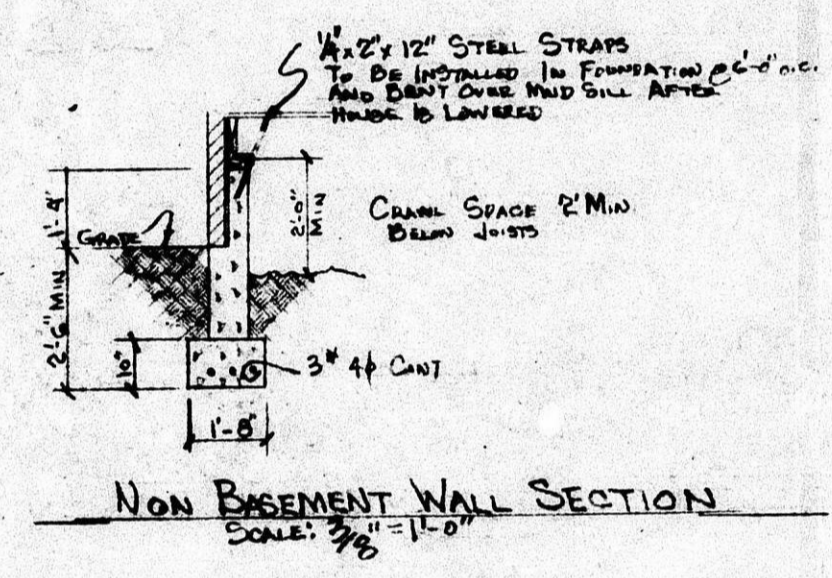


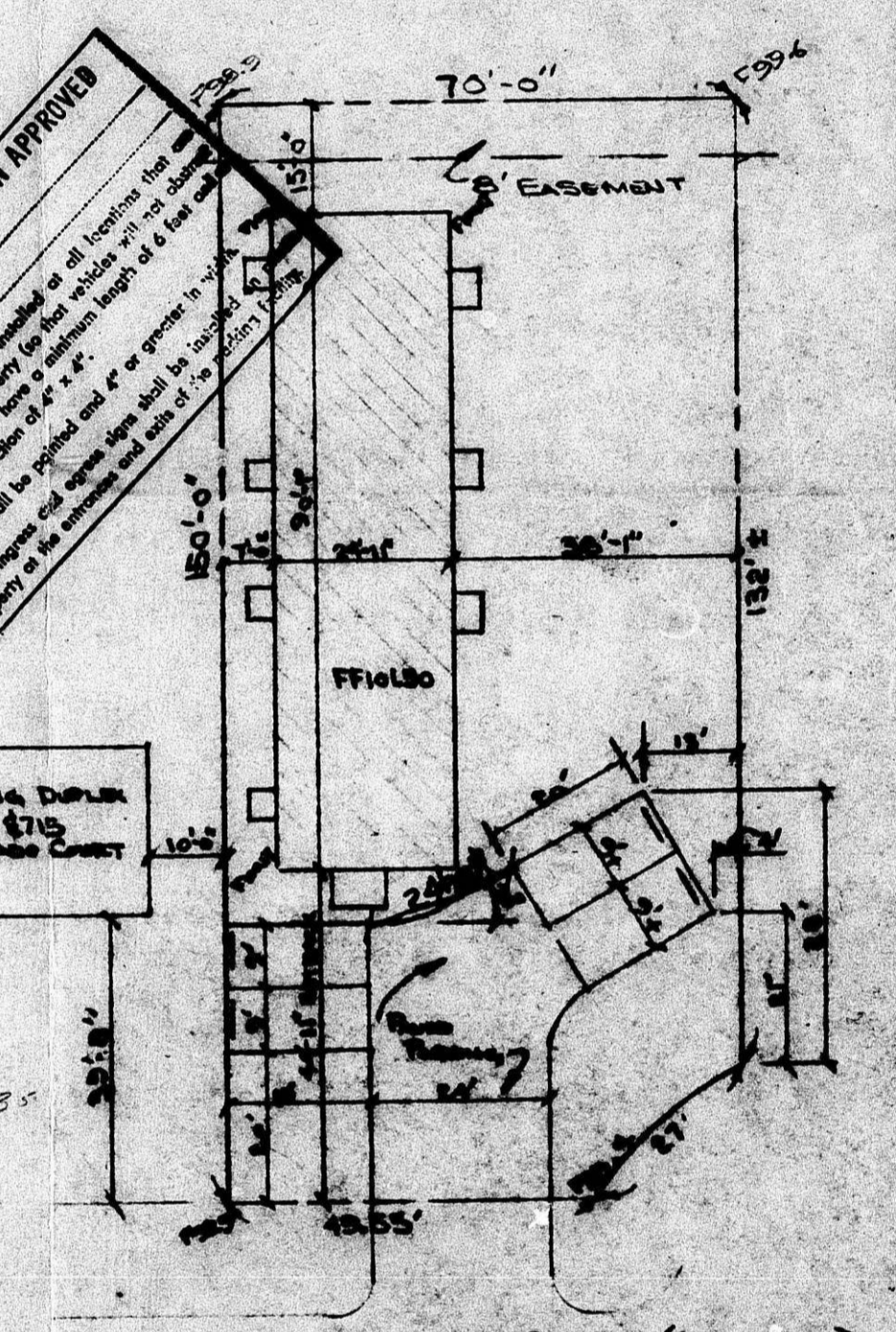
BZA 18-71



**TRAFFIC ENGINEERING DIVISION APPROVED**  
 PLAN SCALE: 1/8" = 1'-0"

Notes:  
 (1) Traffic Engineer will be advised of all proposed changes to this plan prior to final review and approval.  
 (2) All work shall be completed and all proposed changes shall be approved by the Traffic Engineer prior to construction.

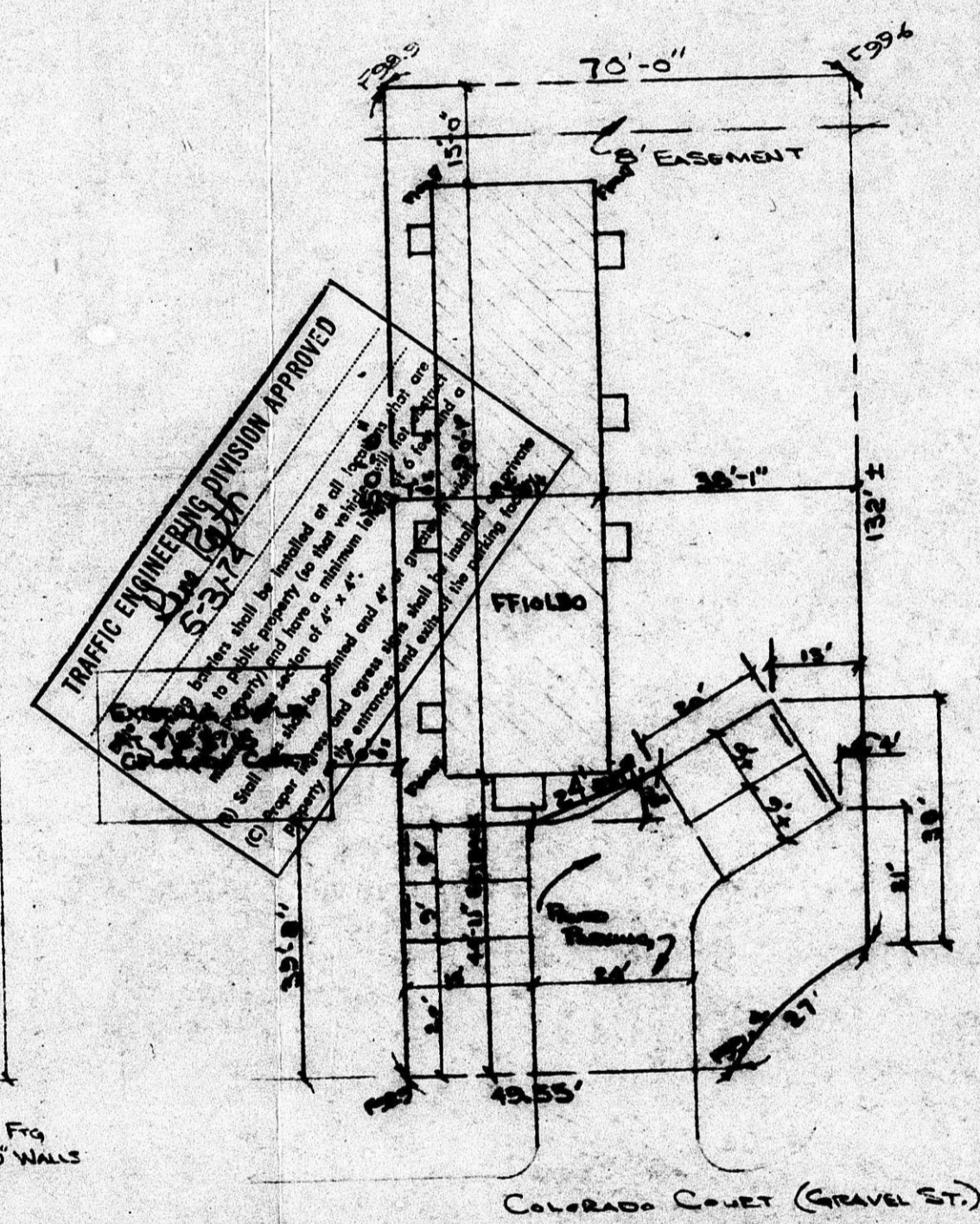
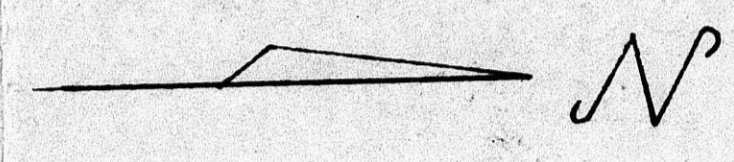
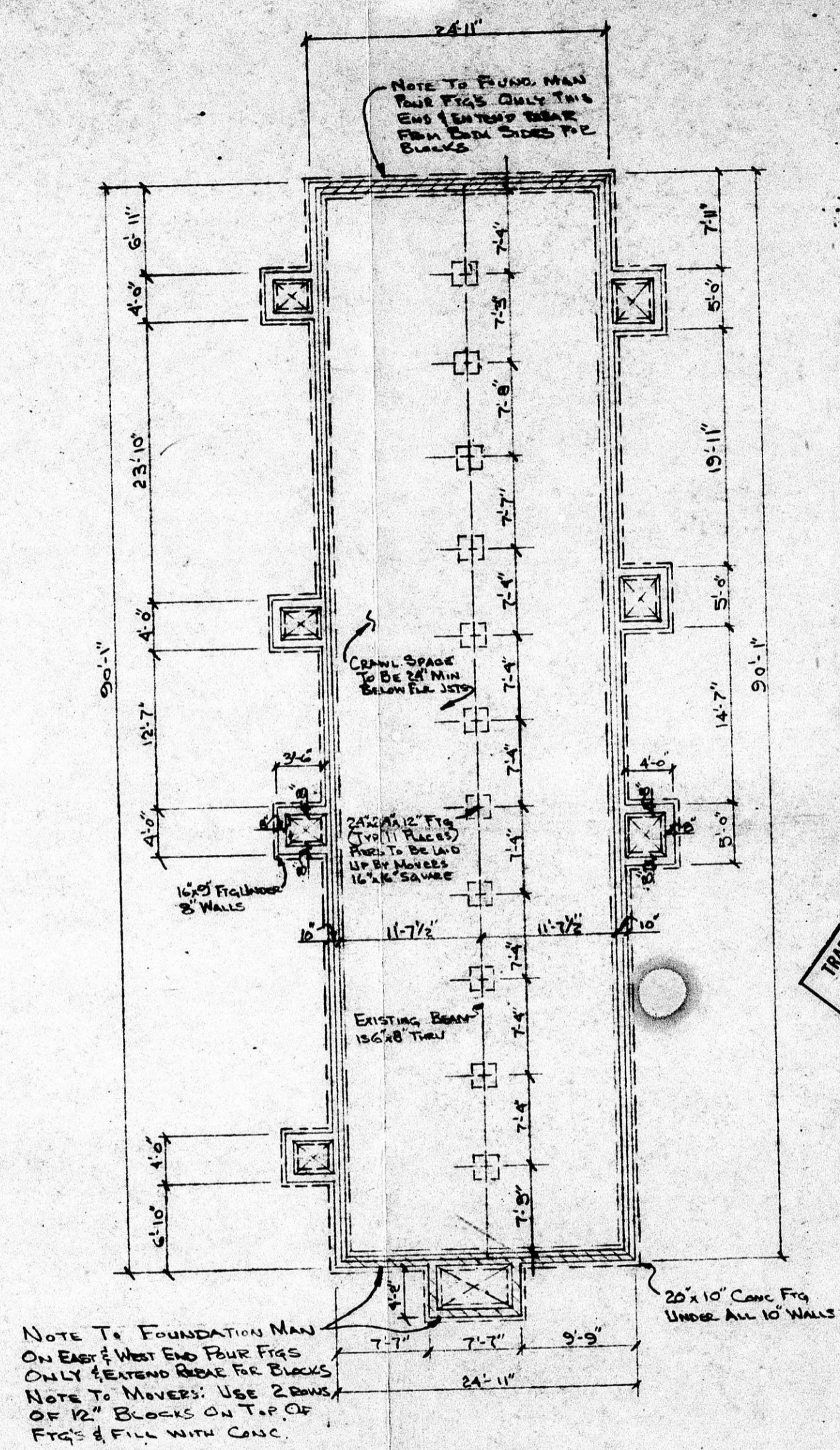
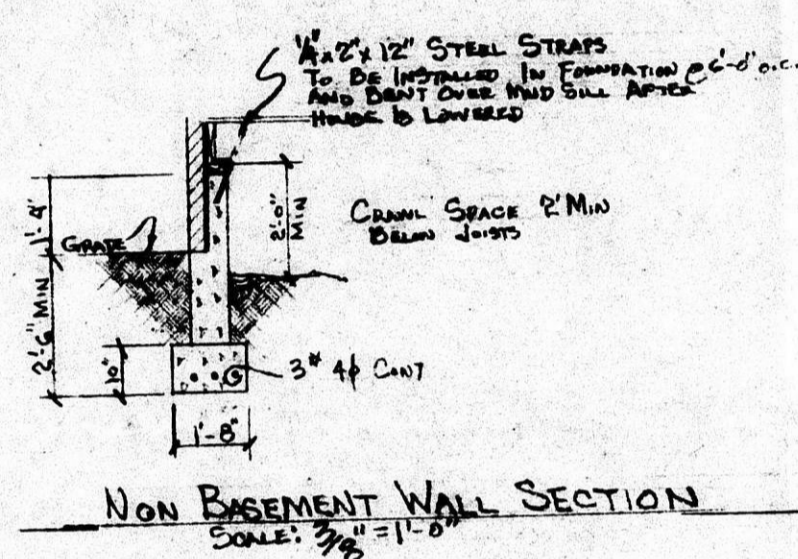
EXISTING DRIVE AT 715 S. 715 COLORADO COURT



BZA 18-71

FILMED FROM THE BUREAU OF RECORDS

BZA 18-74



BZA 18-74

FILED FROM THE BEST AVAILABLE COPY