



**Tract Description**

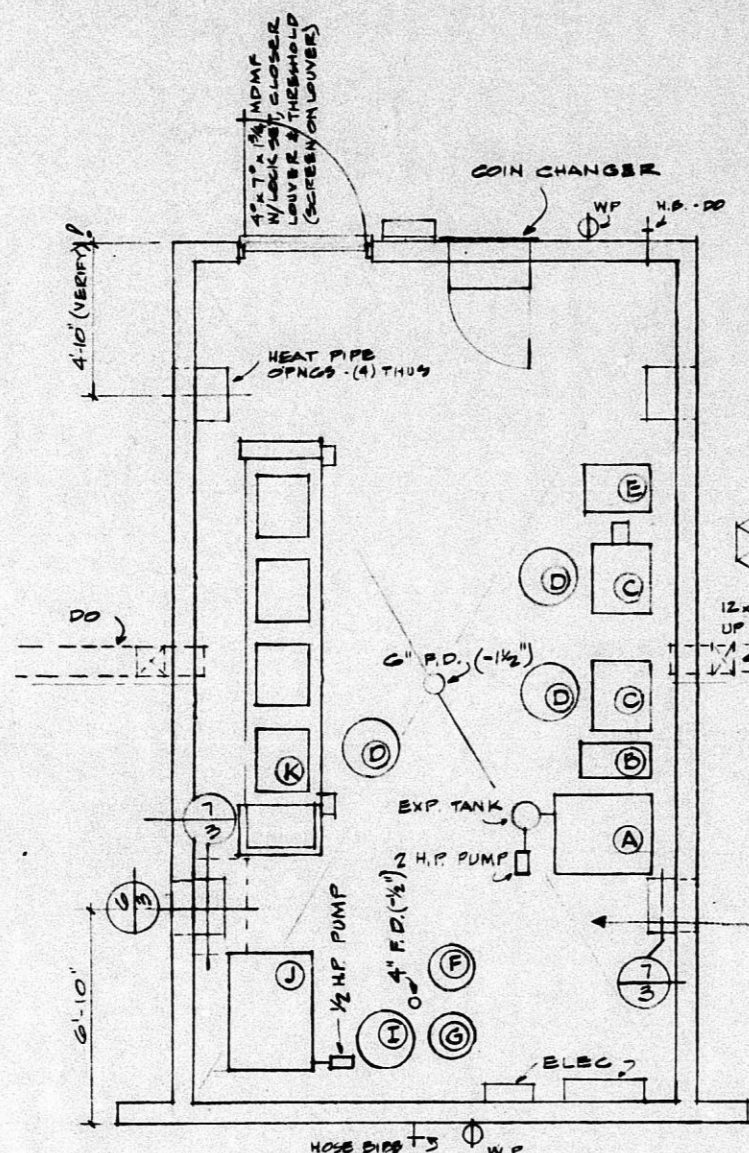
A tract beginning at the SE corner of the SE 1/4 of Section 21, Township 27 South, Range 2 East of the 6th P.M., Sedgewick County, thence Northerly along the East line of said SE 1/4 306.30 feet; thence westerly parallel with the north line of U.S. 54 Highway right of way, 250 feet; thence southerly parallel with the east line of said SE 1/4, 306.12 feet to the South line of said SE 1/4; thence Easterly along said South line, 250 feet to the point of beginning, except that part taken for U.S. 54 and Greenwich Road, and except the North 46 feet of the East 150 feet thereof. (this description being part of Lot 1 of proposed Universal 2nd Addition)

A tract 46 by 150 feet beginning at the Northeast corner of a tract described immediately above

**Property Owner**

Universal Service Stations Inc.  
2826 Blvd  
67214

Gerald B. Maloney  
830 West Lane  
67206



EQUIPMENT RM. PLAN  
1/4" = 1'-0"

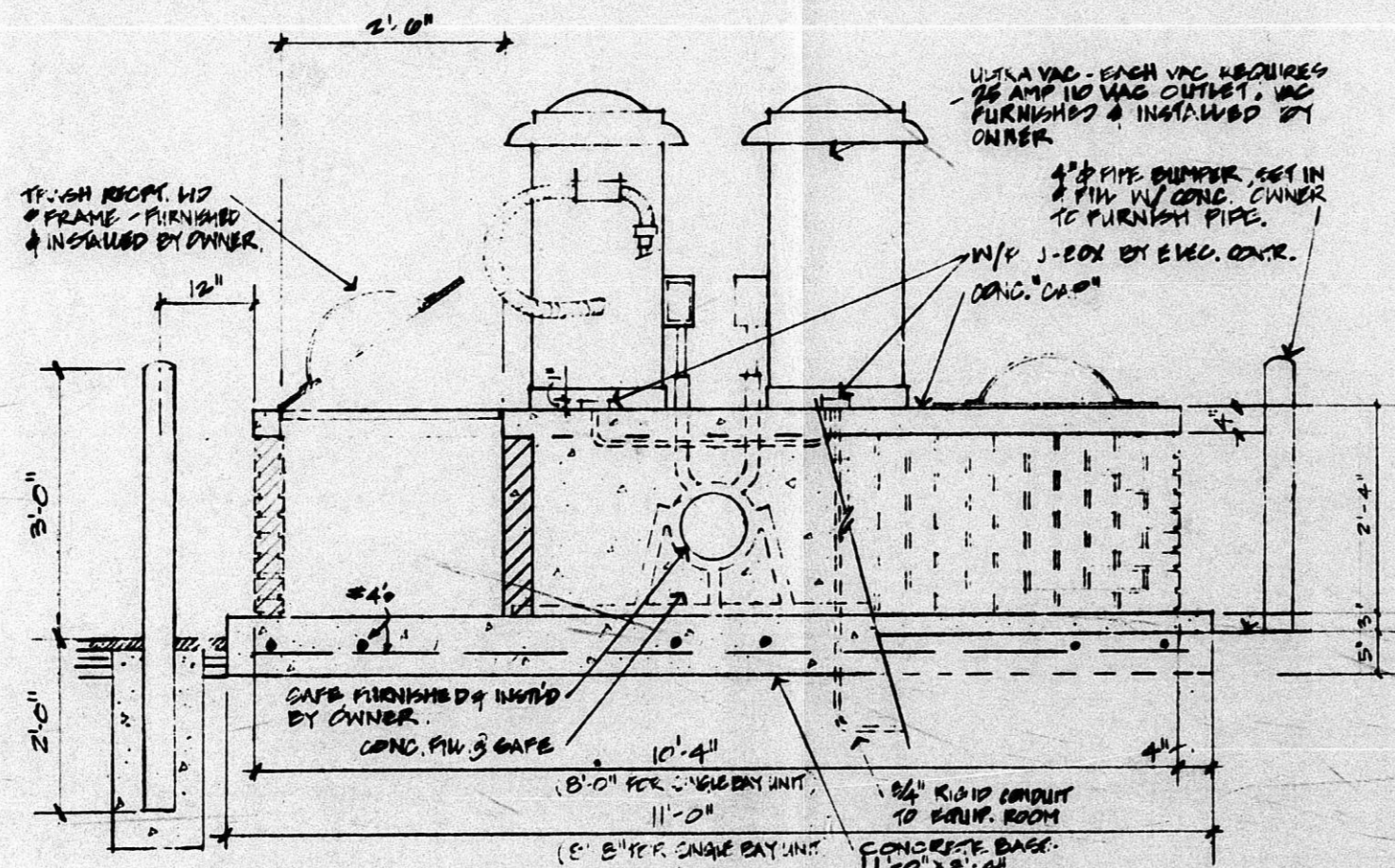
6"x12" GALV. TRAY ACCESS ROOF TO CENTER OF BAY'S FOR HOSES. PROVIDE HOLES IN BOTTOM FOR DRAINAGE. TOP OPEN. PROVIDE CONNECTORS @ 8" MAX. CTR.

**EQUIPMENT LIST**

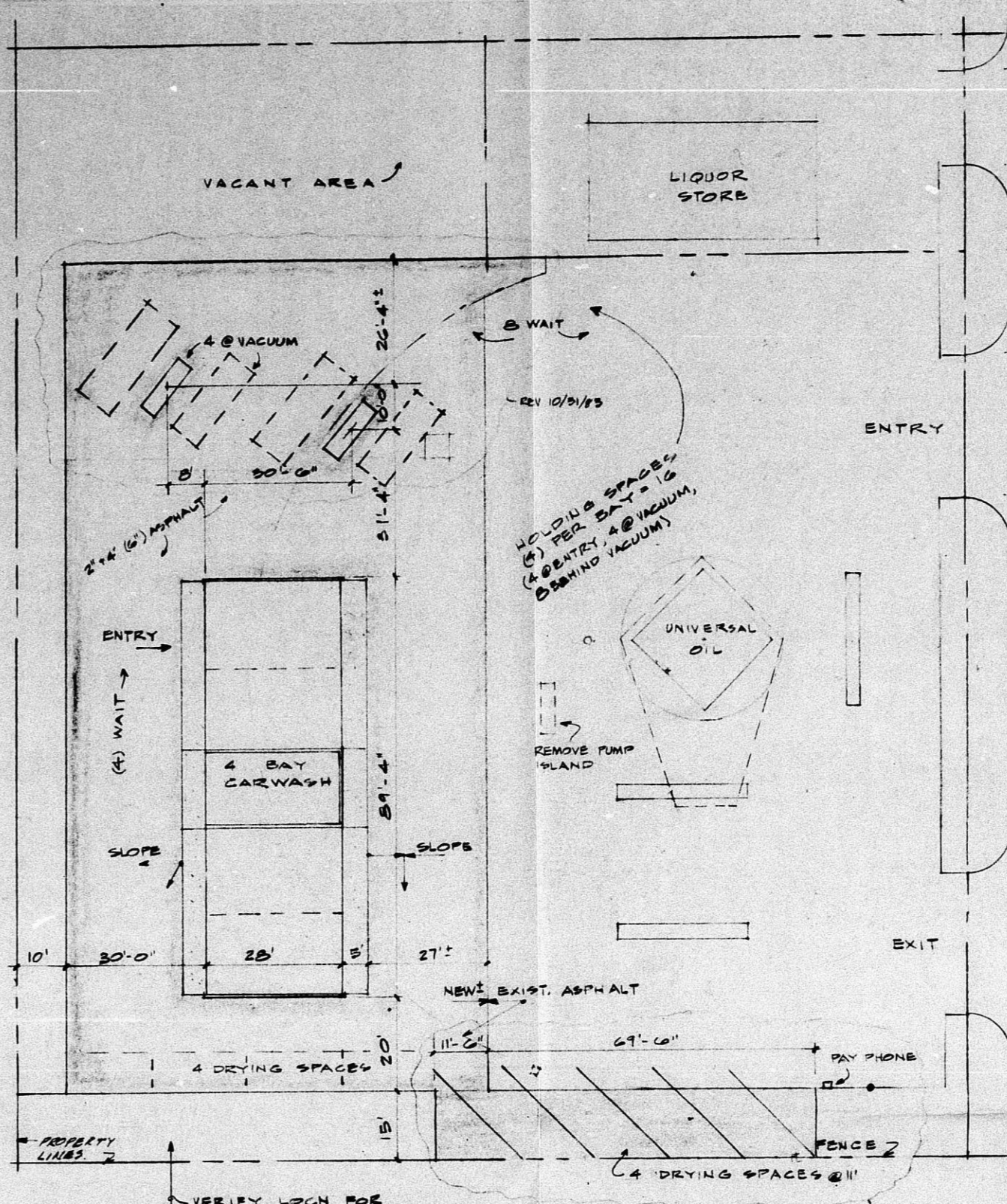
NOTE: ALL EQUIPMENT LISTED BELOW IS SHOWN ON SCHEMATIC PLAN UNLESS NOTED OTHERWISE IS TO BE PURCHASED & INSTALLED BY OWNER.

- 1 - 400,000 BTU/HK RAYPAK #100.
- 2 - UNIT HEATER.
- 3 - 200 GPM CONDENSER.
- 4 - 200 GPM CONDENSER.
- 5 - 200 GPM CONDENSER (OPTIONAL).
- 6 - 200 GPM CONDENSER.
- 7 - 200 GPM CONDENSER.
- 8 - 200 GPM CONDENSER.
- 9 - 200 GPM CONDENSER.
- 10 - 200 GPM CONDENSER.
- 11 - 200 GPM CONDENSER.
- 12 - 200 GPM CONDENSER.
- 13 - 200 GPM CONDENSER.
- 14 - 200 GPM CONDENSER.
- 15 - 200 GPM CONDENSER.
- 16 - 200 GPM CONDENSER.
- 17 - 200 GPM CONDENSER.
- 18 - 200 GPM CONDENSER.
- 19 - 200 GPM CONDENSER.
- 20 - 200 GPM CONDENSER.

NOTE: PROVIDE (1) 40,000 BTU/HK SPACE HEATER WHERE DIRECTED. FURNISH HANGERS, THERMOSTAT, PIPING, FLUE, RT. JACK, ETC. AS REQ'D. FURNISH & INSTALL LIGHTING, RECEPTACLES, SWITCHES, PANELS, ETC. AS REQ'D OR DIRECTED.



VACUUM & TRASH ISLAND DETAILS  
3/4" = 1'-0"



VERIFY LOCAL FOR SEWER, WATER & GAS CONNECTIONS TO CITY SERVICES (\$ WATER LOCATIONS)  
WATER - 1" WATER 1/2" SERVICE  
GAS - 1,500,000 BTU/HK L.P. (S.W.C.)  
ELEC -

SITE PLAN 1" = 20'-0"

KELLOGG

B2A 20-83



**PARKS & PARKS ARCHITECTS**  
ARCHITECTS  
1001 S. W. 10TH ST., SUITE 100  
WICHITA, KANSAS 67202  
TEL. 620-622-1111  
FAX 620-622-1112

A SELF SERVICE CARWASH FOR:  
**AMERICAN PRIDE CARWASH, INC.**  
WICHITA, KANSAS

B2A 20-83