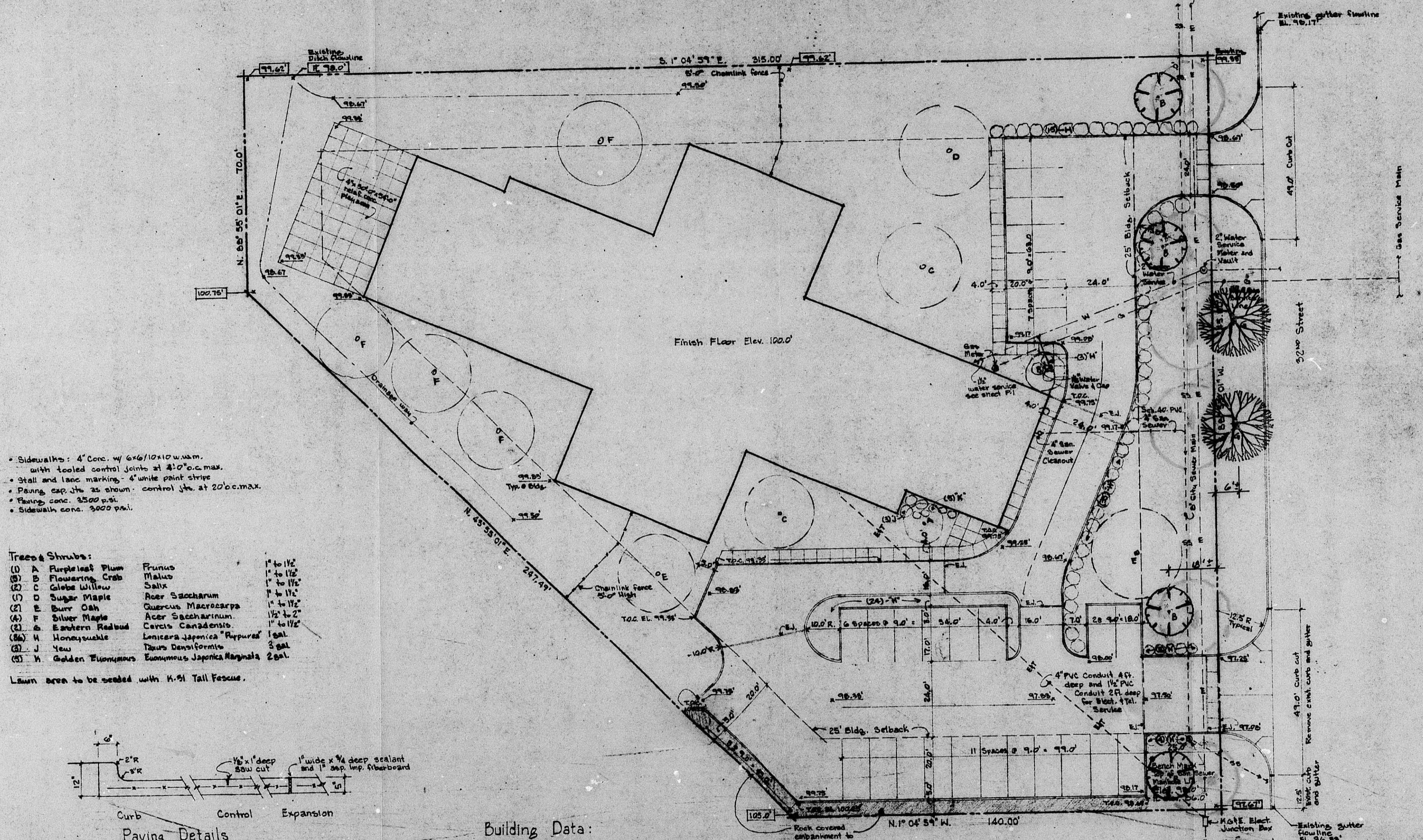




New Song Child Care Center

Site Plan

S.I.

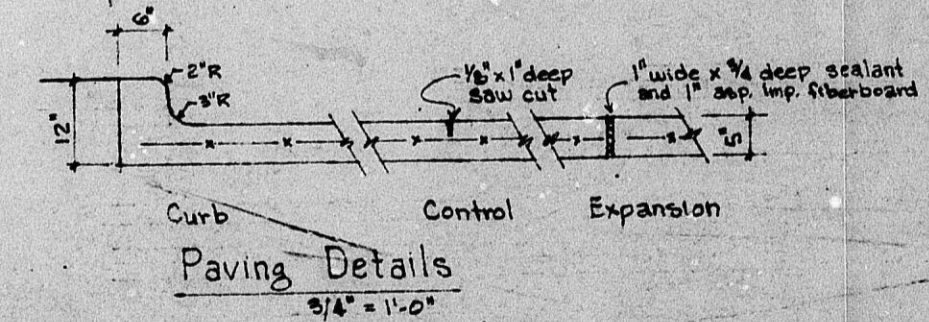


- Sidewalks: 4" Conc. w/ 6x6/10x10 w.w.m. with tooled control joints at 20' o.c. max.
- Stall and lane marking: 4" white paint stripes
- Paving exp. jts. as shown - control jts. at 20' o.c. max.
- Paving conc. 3500 psi.
- Sidewalk conc. 3000 psi.

Trees & Shrubs:

(1) A. Purpleleaf Plum	Prunus	1" to 1 1/2"
(2) B. Flowering Crab	Malus	1" to 1 1/2"
(3) C. Galles Willow	Salix	1" to 1 1/2"
(4) D. Sugar Maple	Acer Saccharum	1" to 1 1/2"
(5) E. Burr Oak	Quercus Macrocarpa	1" to 1 1/2"
(6) F. Silver Maple	Acer Saccharinum	1 1/2" to 2"
(7) G. Eastern Redbud	Cercis Canadensis	1" to 1 1/2"
(8) H. Honeylocust	Loniceria Japonica "Reppur"	1 gal.
(9) J. Yew	Taxus densiflora	2 gal.
(10) K. Golden Pigeonwood	Euonymus Japonica Magnolia	2 gal.

Lawn area to be seeded with K-91 Tall Fescue.



Building Data:
 E-3 Occupancy
 Type V-1 by Construction Type
 One story - no basement
 15,045 Square feet bldg. area
 68,882 Square feet land area
 160 Children max.
 25 Teachers, kids and Staff - Total

Site Plan
1/16" = 1'-0"

LANDSCAPE PLAN
 APPROVED (See Letter)
 9-19-86
[Signature]