

CU-184

ENGLEWOOD TRAILER COURT II

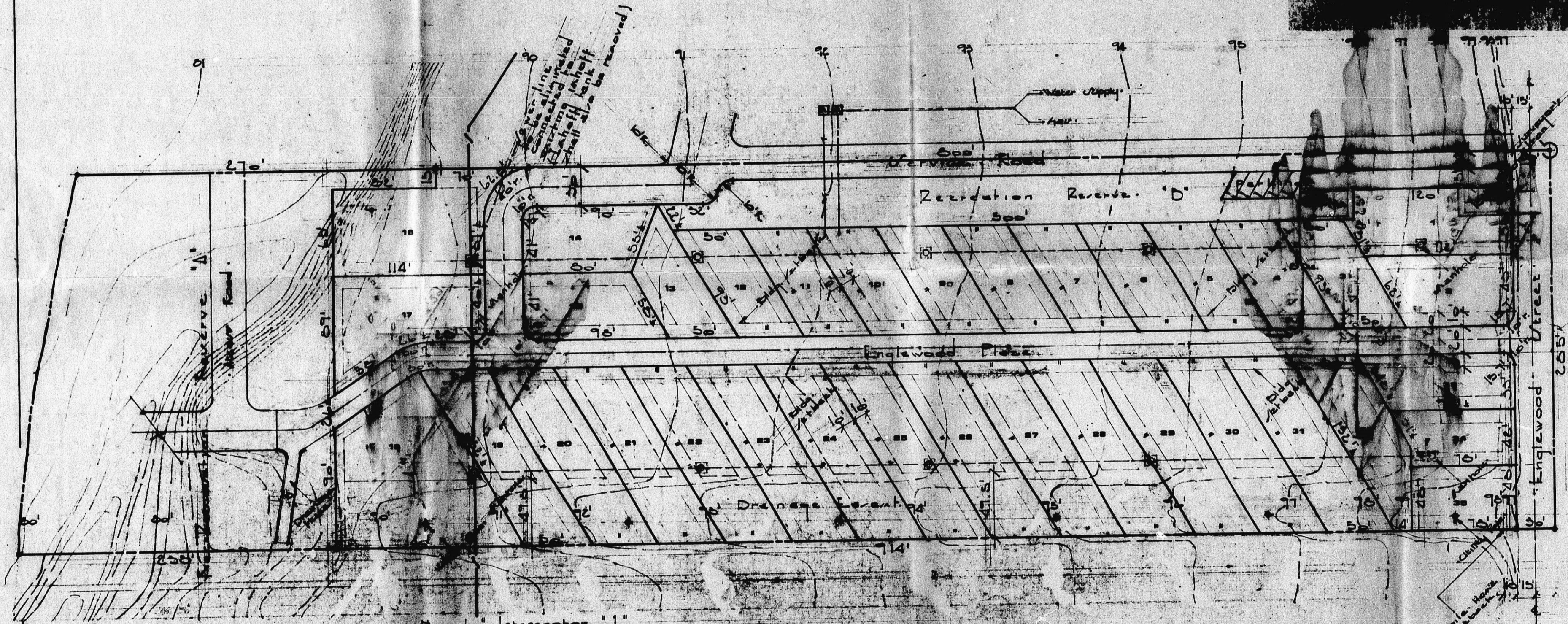
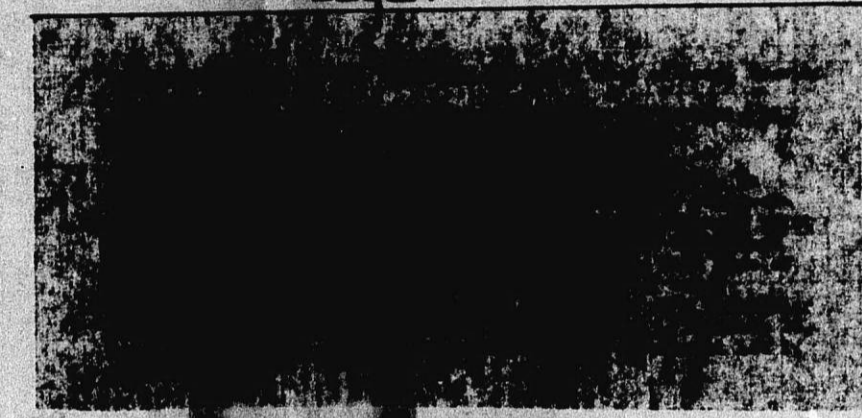
a addition to Englewood Trailer Park

3801 EAST MAC ARTHUR SEDGWICK CTY WICHITA KANSAS

John I. Peters
6830394

NOTARIZED COPY
BY THE COUNTY CLERK
OF SEDGWICK COUNTY
WICHITA, KANSAS

Approved Subject to:
1. Sewer Service from Sewer Rehabilitation, Inc.
2. Proper location of water lines - 10' min. from sewer.
James S. Wilbur, Jr.
6-20-77
Legal



New to Interceptor
connect to City of Wichita
Southwest Interceptor

Symbol	Description
⊗	Existing manhole
⊕	Existing Utility pole
⊙	Surveyors Iron, existing
⊘	Existing grade
▨	Proposed bldg.
—	New branch Interceptor line to eliminate existing catch

Community Unit Plan
Scale: 40' = 1"

CU-184

REVISIONS DATE
DATE 4-16-77
APPROVED BY
DRAWN BY C.D.A.

ENGLEWOOD MOBILE HOME PARK

THE SOUTH 285 FEET OF GOV'T LOT 1, SEC. 14, T14P 28-3, R-1-E, AND THE SOUTH 285 FEET OF GOV'T LOT 2, SEC. 15, T14P 28-3, R-1-E, EXCEPT THE EAST 150 FEET THEREOF.

GROSS AREA OF SITE 322,000.0 sq. ft.
 NET AREA OF SITE 313,000.0 sq. ft.
 7.4 acres ±
 7.2 acres ±

TOTAL OF MOBILE HOME SITES 34

DENSITY 87025.0 sq. ft. ±

RECREATIONAL AREAS 2.0 acres ±

4.7 mobile homes per net acre

Electric _____ E _____ E

Water _____ W _____ W

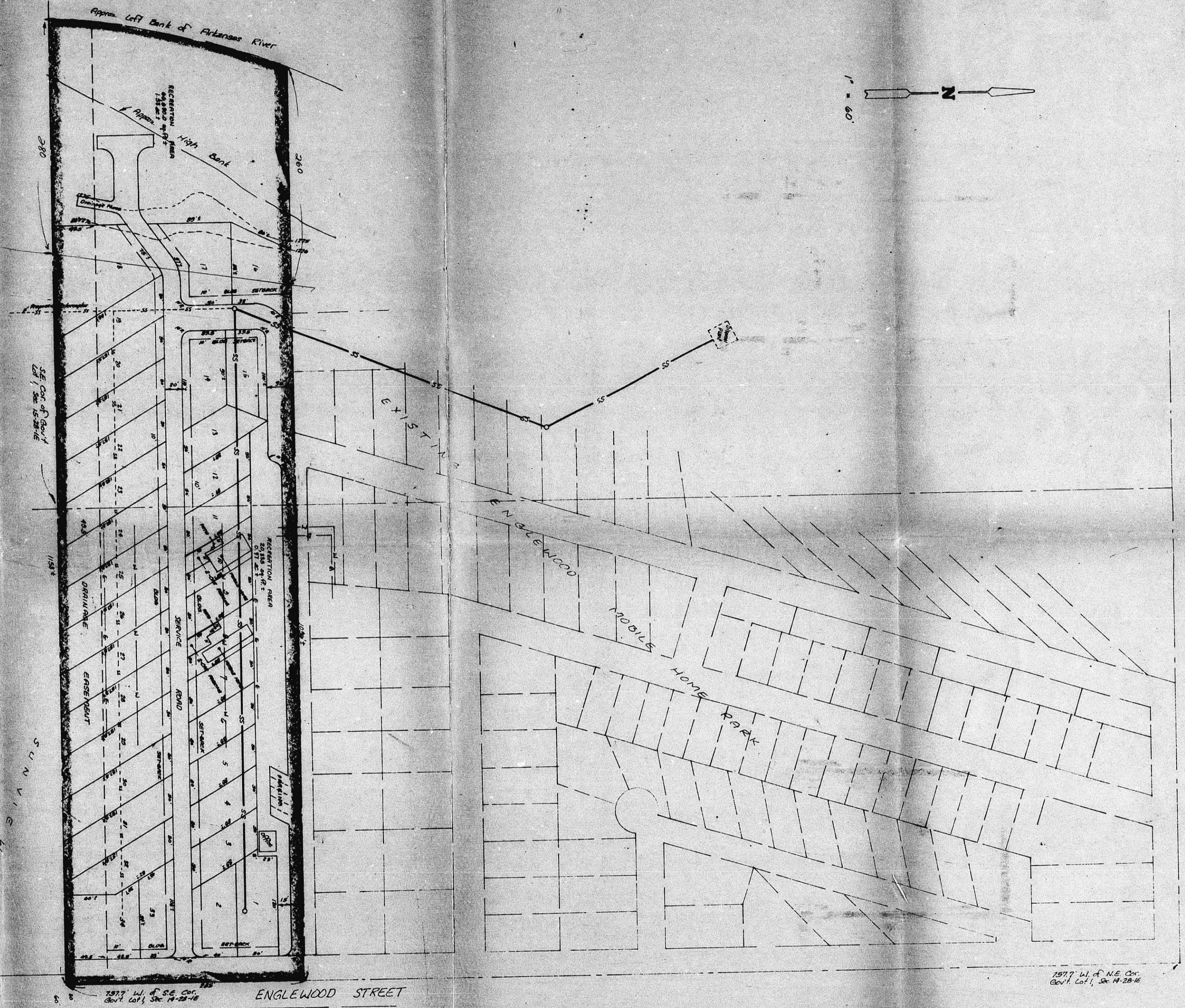
Gas _____ G _____ G

CU-184

OWNER: JOHN I. PETERS

OFFICE COPY
 DO NOT REMOVE

DALGHAMIAN COMPANY 12 SEP 1977



ENGLEWOOD TRAILER COURT II

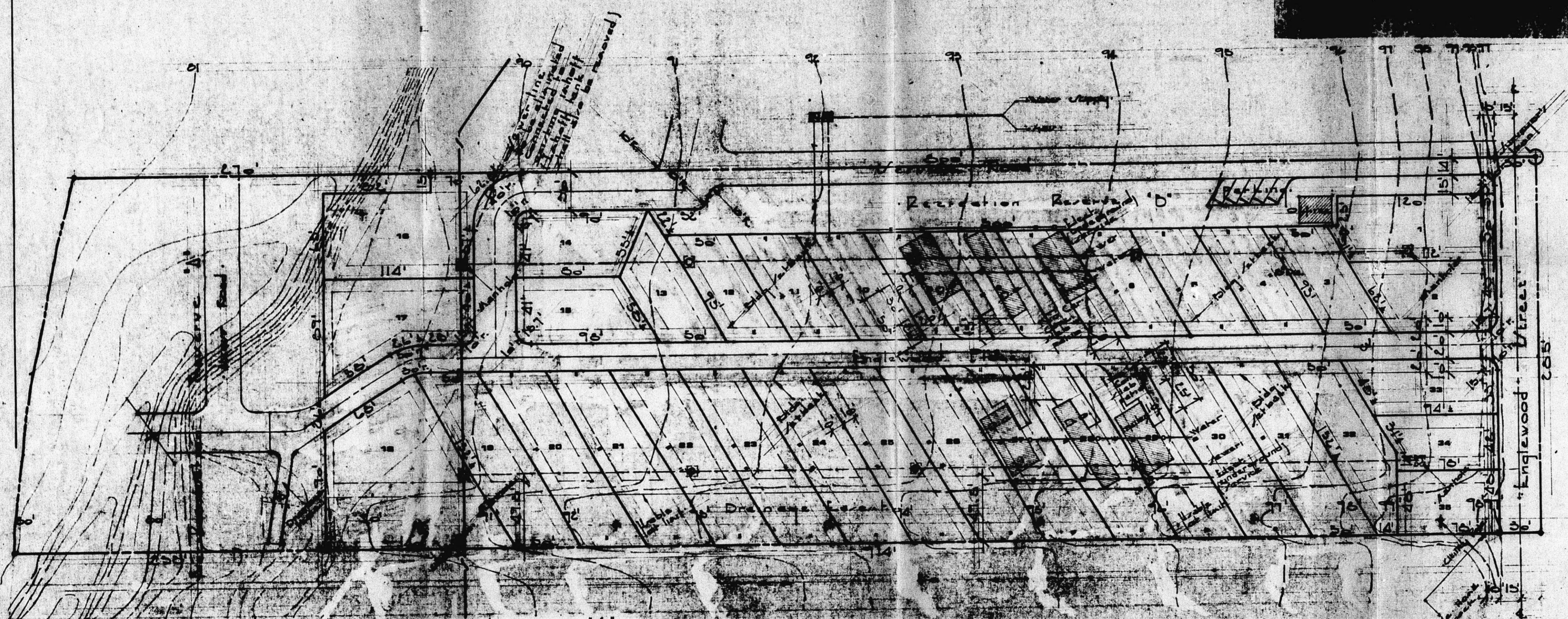
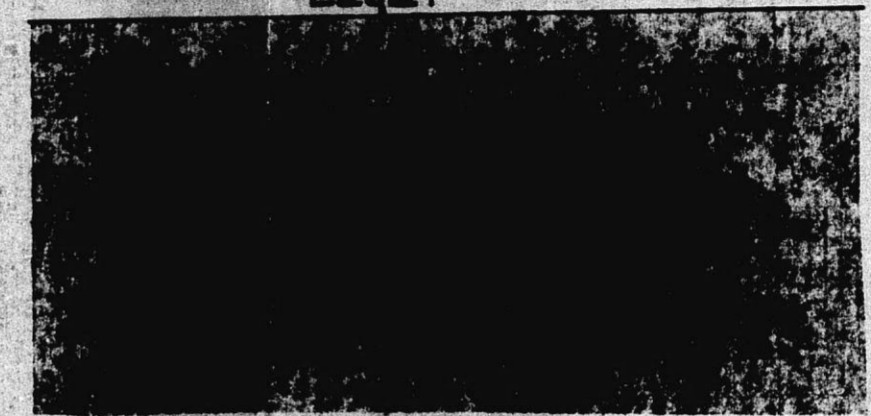
a addition to Englewood Trailer Park

3201 EAST MAC ARTHUR SEDGWICK CTY WICHITA KANSAS

WICHITA SERVICE CENTER
 DIV. OF COMMUNITY PLANNING
 WICHITA, KANSAS 67202

Approved Subject to:
 1. Sewer Service from Summit/Edgemoor I.D.
 2. Proper location of water lines 10' min. from sewer.
 James H. Likens, Jr.
 6-20-77

Legal



New to Interceptor
 connect to City of Wichita
 Southwest Interceptor

Legend

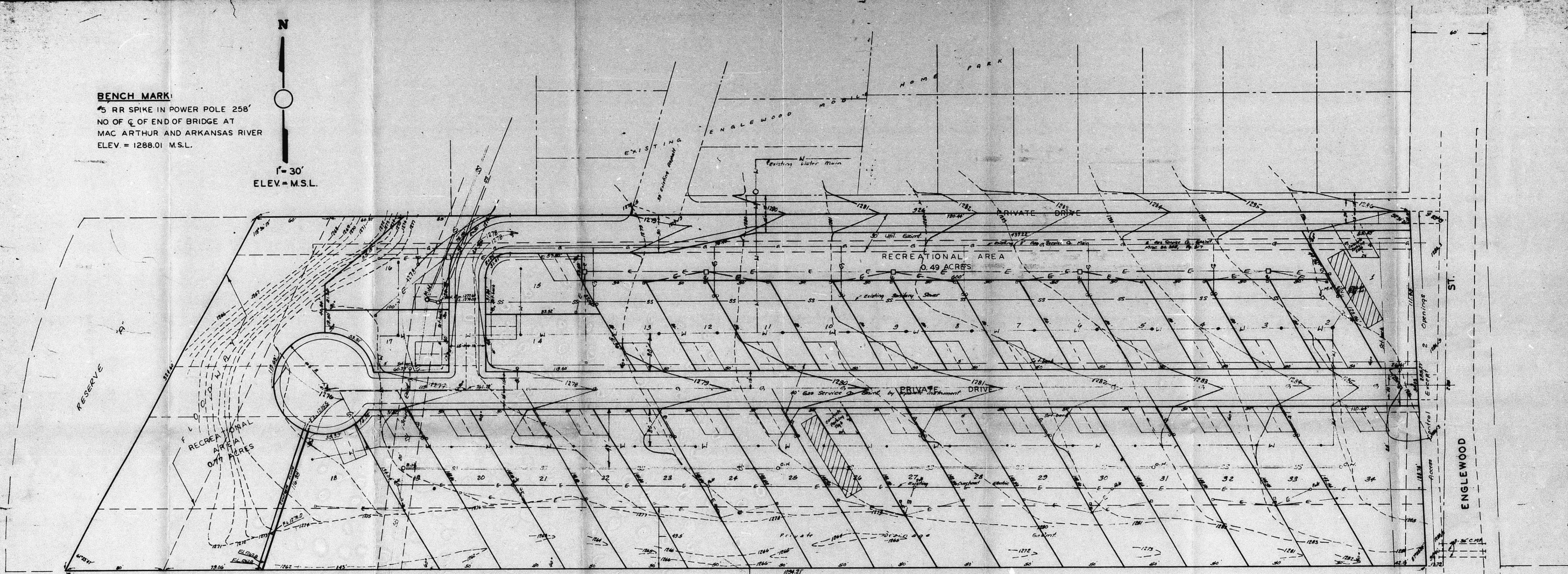
	Existing manhole
	Existing Utility pole
	Surveyor Iron pin
	Existing grass
	Proposed Alley & trailer
	New branch Interceptor line

Community Unit Plan CU-184

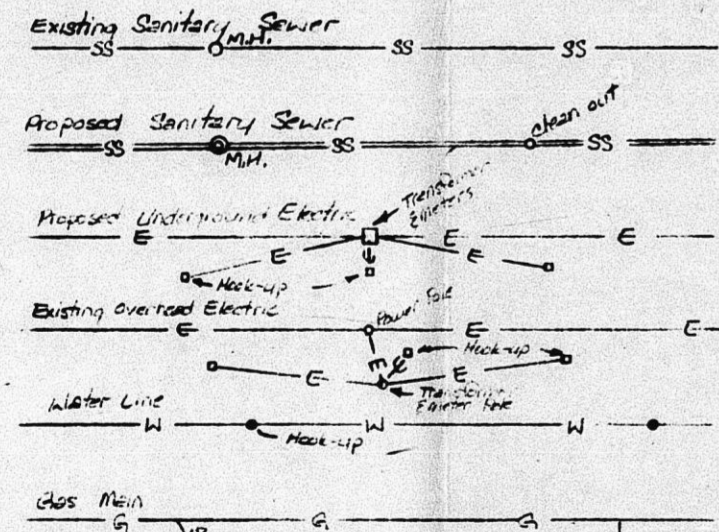
DRAWN BY: CBA
 APPROVED BY:
 DATE: 4-16-77
 REVISED DATE:

BENCH MARK:
 5 RR SPIKE IN POWER POLE 258'
 NO OF C OF END OF BRIDGE AT
 MAC ARTHUR AND ARKANSAS RIVER
 ELEV. = 1288.01 M.S.L.

N
 1" = 30'
 ELEV. = M.S.L.



LEGEND:

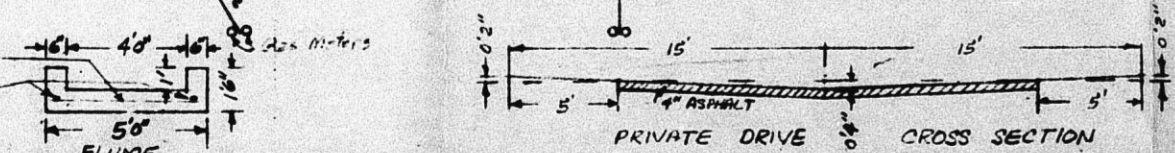


ENGLEWOOD MOBILE HOME PARK

LEGAL DESCRIPTION:
 LOT 1, BLOCK A, ENGLEWOOD PARK ADDITION, SEDGWICK COUNTY, KANSAS

GROSS AREA OF LOT 1 — 6.61 ACRES
 8% OF GROSS AREA — 0.35 ACRES
 RECREATIONAL AREAS — 1.26 ACRES
 NET AREA OF LOT 1 — 5.35 ACRES
 MOBILE HOME SITES — 34
 DENSITY PER ACRE — 6.4 HOMES

OWNER - DEVELOPER: *CU-184*
 JOHN I. PETERS

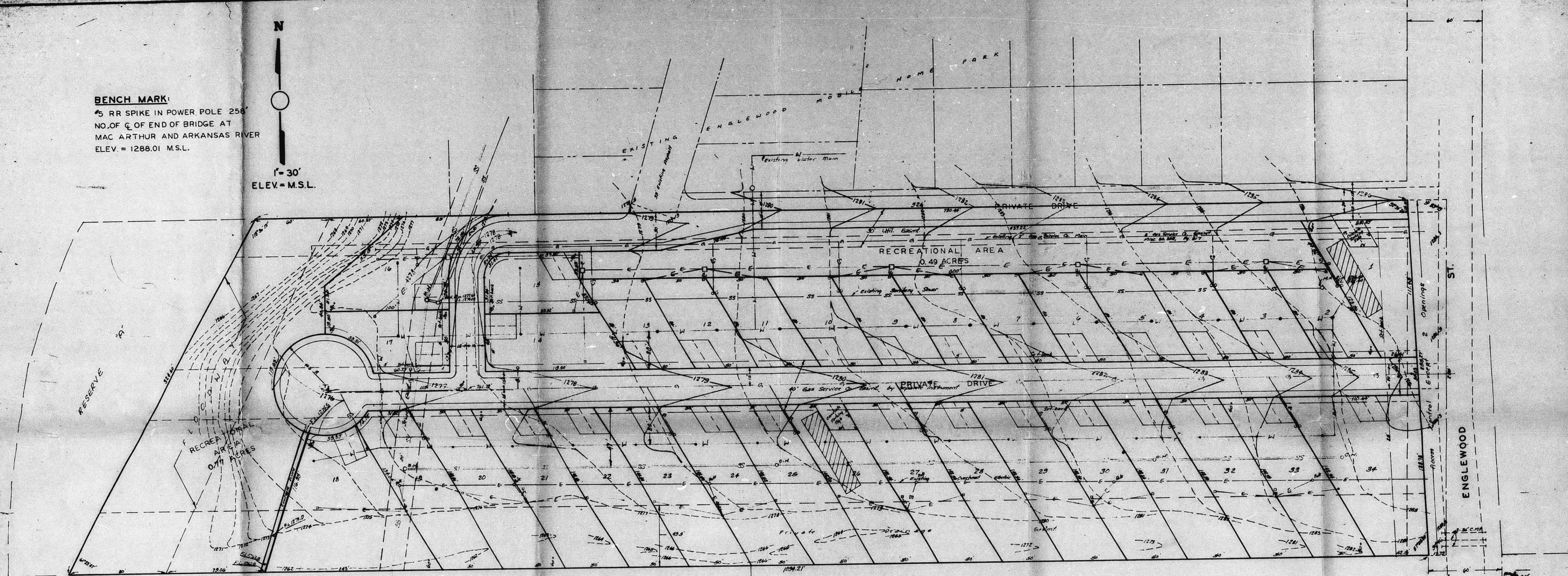
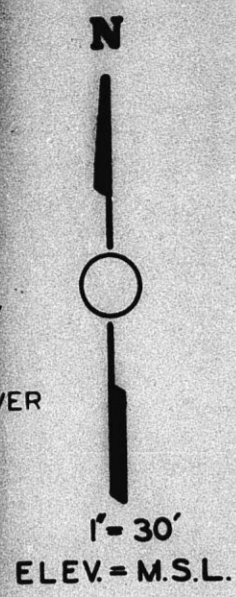


BAUGHMAN COMPANY
 330 LAURA
 WICHITA, KS. 67211

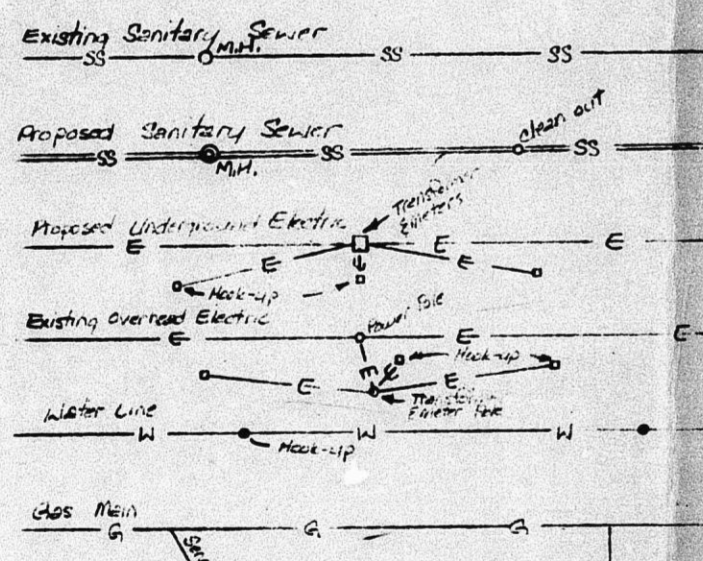
262-7271

DECEMBER 26, 1978

BENCH MARK:
 5 RR SPIKE IN POWER POLE 256'
 NO. OF C OF END OF BRIDGE AT
 MAC ARTHUR AND ARKANSAS RIVER
 ELEV. = 1288.01 M.S.L.



LEGEND:



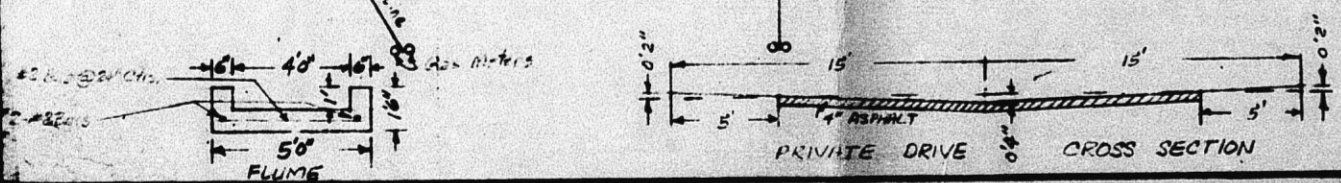
ENGLEWOOD MOBILE HOME PARK

LEGAL DESCRIPTION:
 LOT 1, BLOCK A, ENGLEWOOD PARK ADDITION, SEDGWICK COUNTY, KANSAS

GROSS AREA OF LOT 1 — 6.61 ACRES
 8% OF GROSS AREA — 0.35 ACRES
 RECREATIONAL AREAS — 1.26 ACRES
 NET AREA OF LOT 1 — 5.35 ACRES
 MOBILE HOME SITES — 34
 DENSITY PER ACRE — 6.4 HOMES

CU-184

OWNER - DEVELOPER:
 JOHN I. PETERS



GREENHAVEN

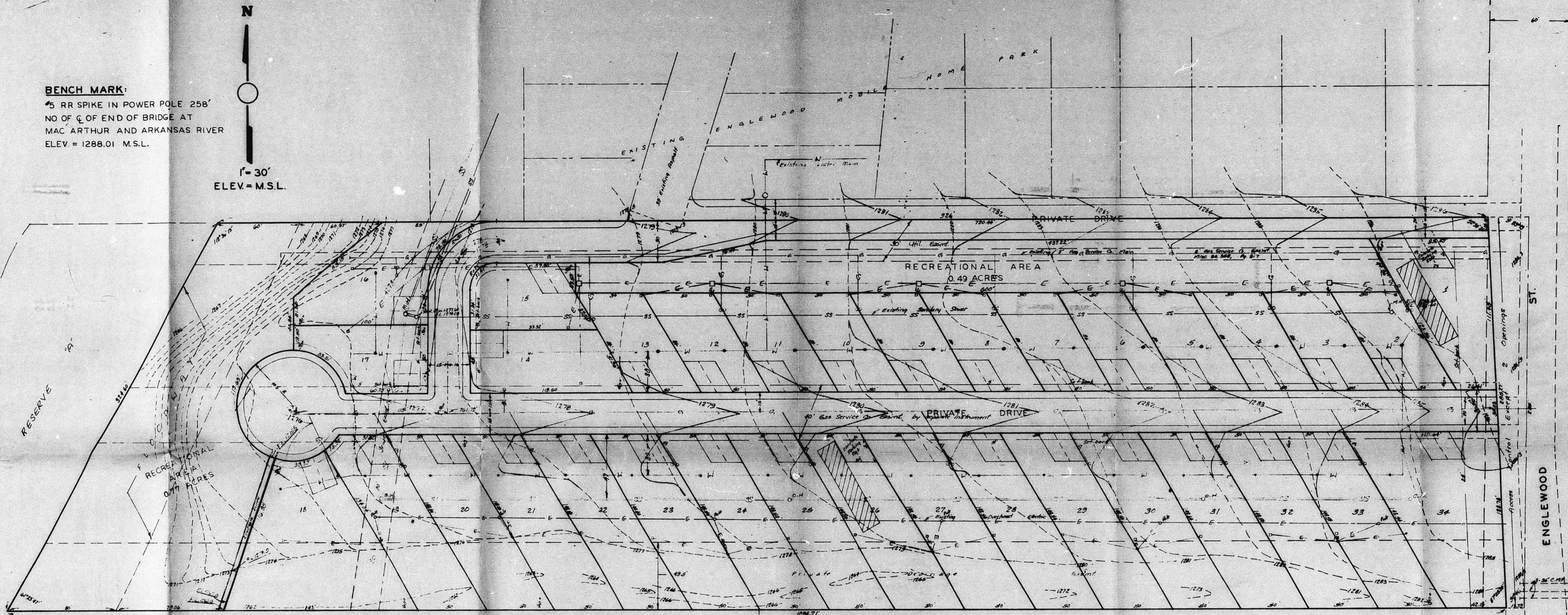
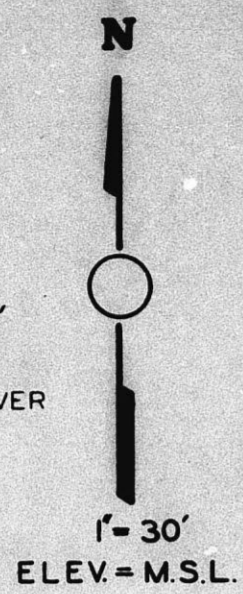
BAUGHMAN COMPANY
 330 LAURA
 WICHITA, K.S. 67211

262-7271

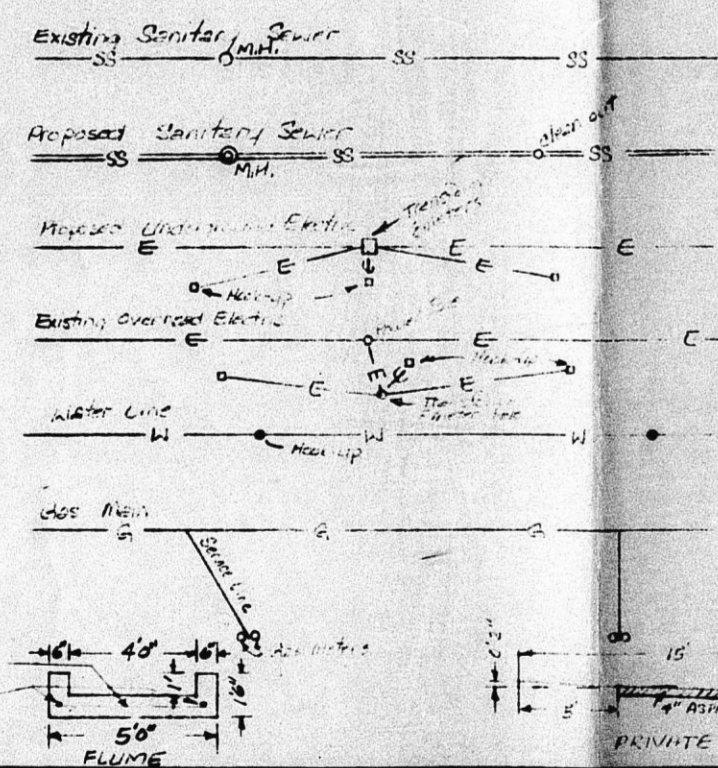
DECEMBER 26, 1975

BENCH MARK:

45 RR SPIKE IN POWER POLE 258'
NO OF C OF END OF BRIDGE AT
MAC ARTHUR AND ARKANSAS RIVER
ELEV = 1288.01 M.S.L.



LEGEND:



ENGLEWOOD MOBILE HOME PARK

LEGAL DESCRIPTION:
LOT 1, BLOCK A, ENGLEWOOD PARK ADDITION, SEDGWICK COUNTY, KANSAS

GROSS AREA OF LOT 1 6.61 ACRES
8% OF GROSS AREA 0.35 ACRES
RECREATIONAL AREAS 1.26 ACRES
NET AREA OF LOT 1 5.35 ACRES
MOBILE HOME SITES 34
DENSITY PER ACRE 6.1 HOMES

CU-184

OWNER - DEVELOPER:
JOHN I. PETERS

GREENHAVEN

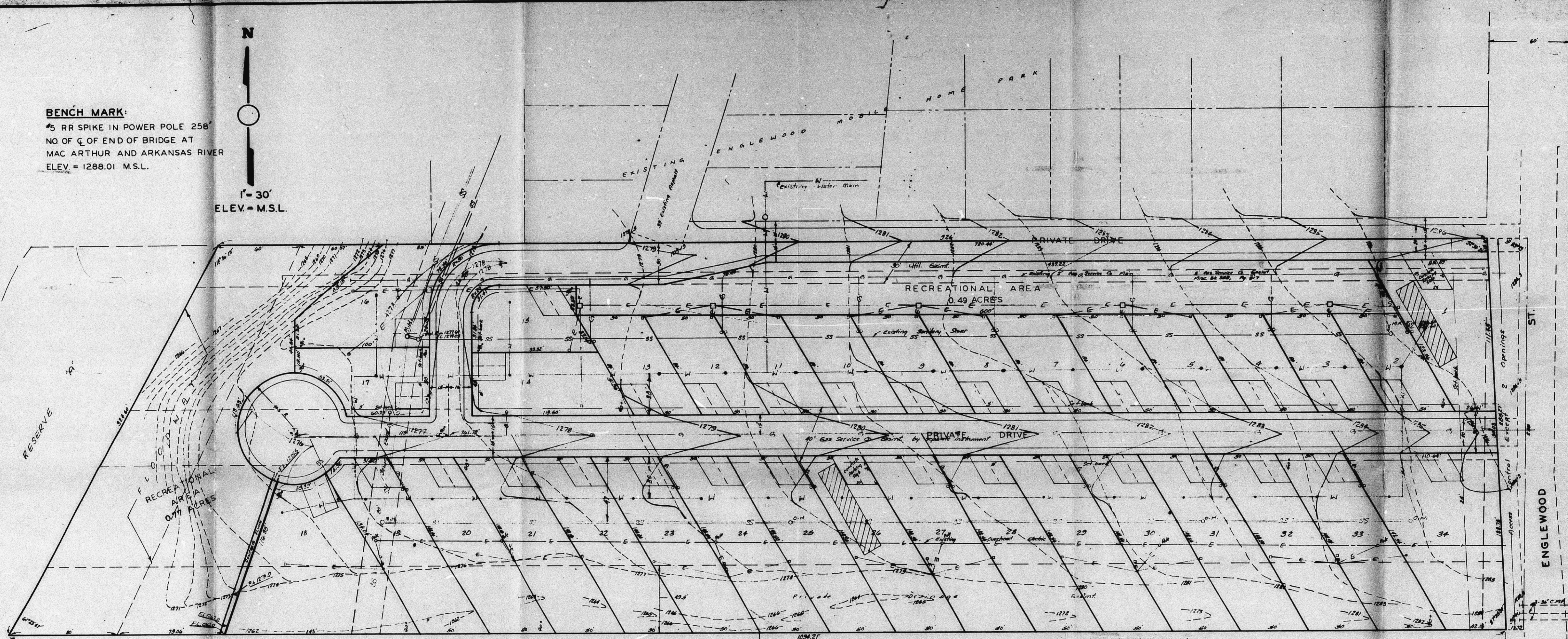
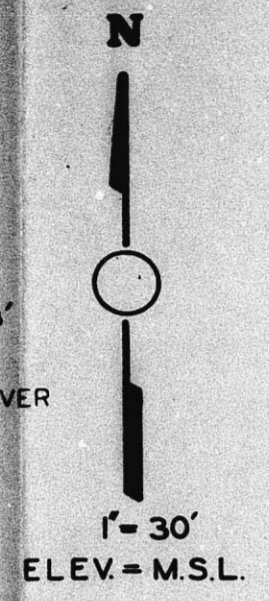
BAUGHMAN COMPANY
330 LAURA
WICHITA, KS. 67211

262-7271

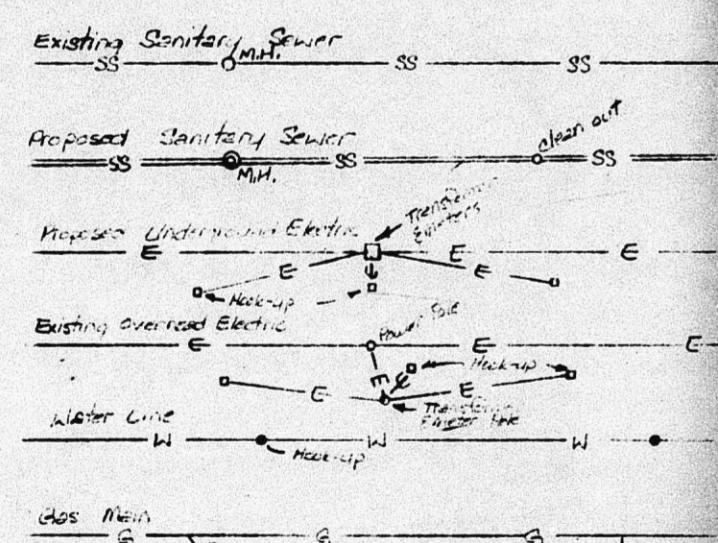
DECEMBER 26, 1978

FILMED FROM THE BEST AVAILABLE COPY

BENCH MARK:
 5 RR SPIKE IN POWER POLE 258'
 NO OF C. OF END OF BRIDGE AT
 MAC ARTHUR AND ARKANSAS RIVER
 ELEV. = 1288.01 M.S.L.



LEGEND:



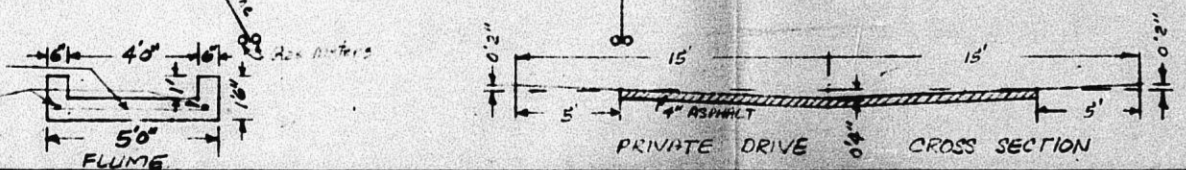
ENGLEWOOD MOBILE HOME PARK

LEGAL DESCRIPTION:
 LOT 1, BLOCK A, ENGLEWOOD PARK ADDITION, SEDGWICK COUNTY, KANSAS

GROSS AREA OF LOT 1	6.61 ACRES
82 OF GROSS AREA	0.35 ACRES
RECREATIONAL AREAS	1.26 ACRES
NET AREA OF LOT 1	5.35 ACRES
MOBILE HOME SITES	34
DENSITY PER ACRE	6.4 HOMES

CU-184

OWNER - DEVELOPER:
 JOHN I. PETERS



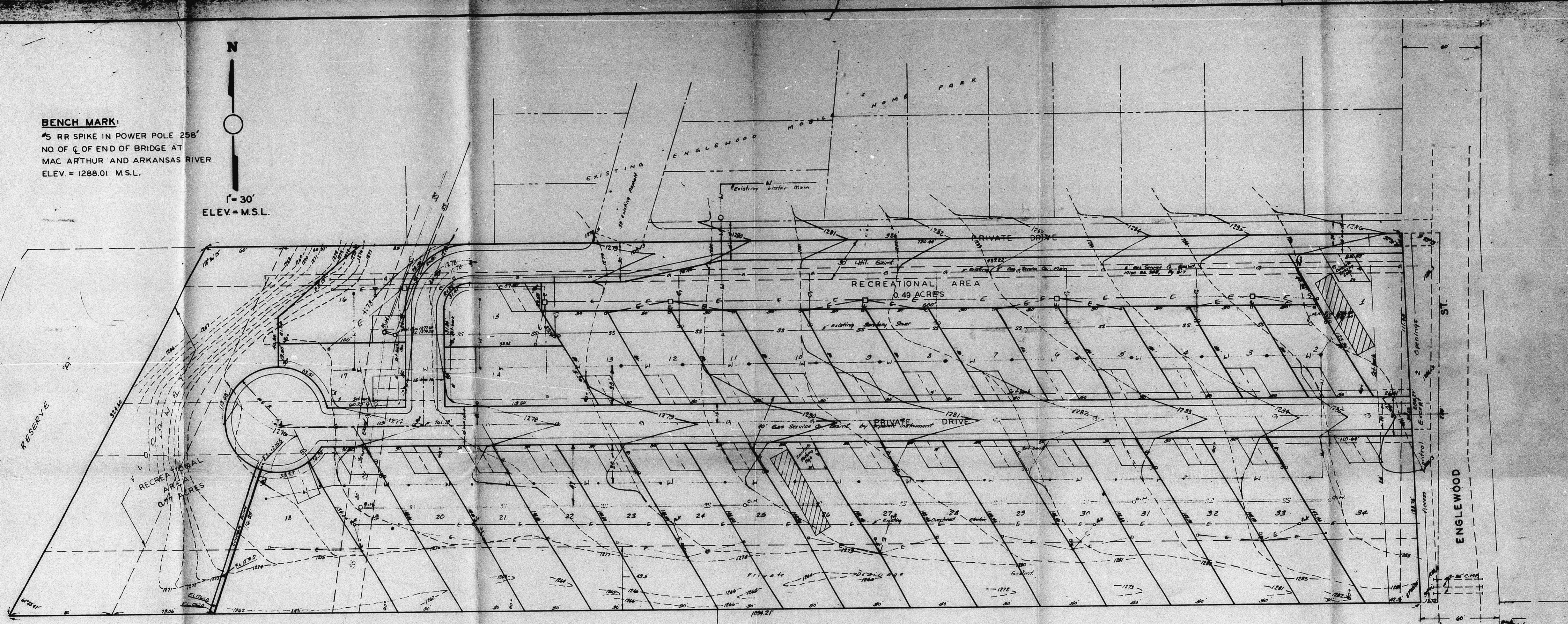
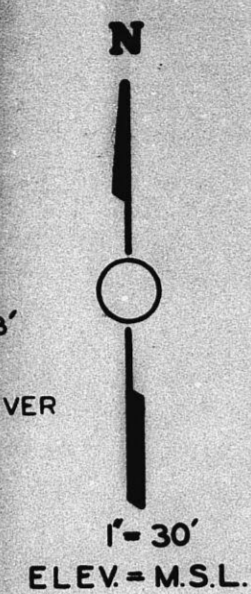
BAUGHMAN COMPANY
 330 LAURA
 WICHITA, KS. 67211

262-7271

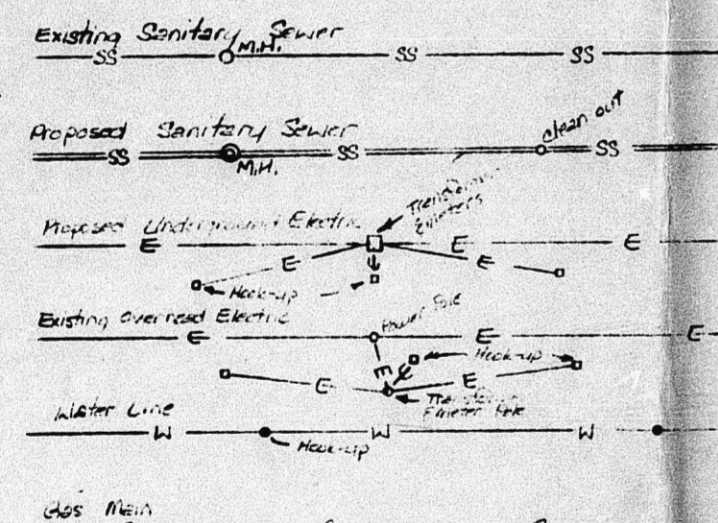
DECEMBER 26, 1976

FILMED FROM THE BEST AVAILABLE COPY

BENCH MARK:
 45 RR SPIKE IN POWER POLE 258'
 NO OF C. OF END OF BRIDGE AT
 MAC ARTHUR AND ARKANSAS RIVER
 ELEV. = 1288.01 M.S.L.



LEGEND:



ENGLEWOOD MOBILE HOME PARK

LEGAL DESCRIPTION:
 LOT 1, BLOCK A, ENGLEWOOD PARK ADDITION, SEDGWICK COUNTY, KANSAS

GROSS AREA OF LOT 1 — 6.61 ACRES
 82 OF GROSS AREA — 0.35 ACRES
 RECREATIONAL AREAS — 1.26 ACRES
 NET AREA OF LOT 1 — 5.35 ACRES
 MOBILE HOME SITES — 34
 DENSITY PER ACRE — 6.4 HOMES

CU-184

OWNER - DEVELOPER:
 JOHN I. PETERS



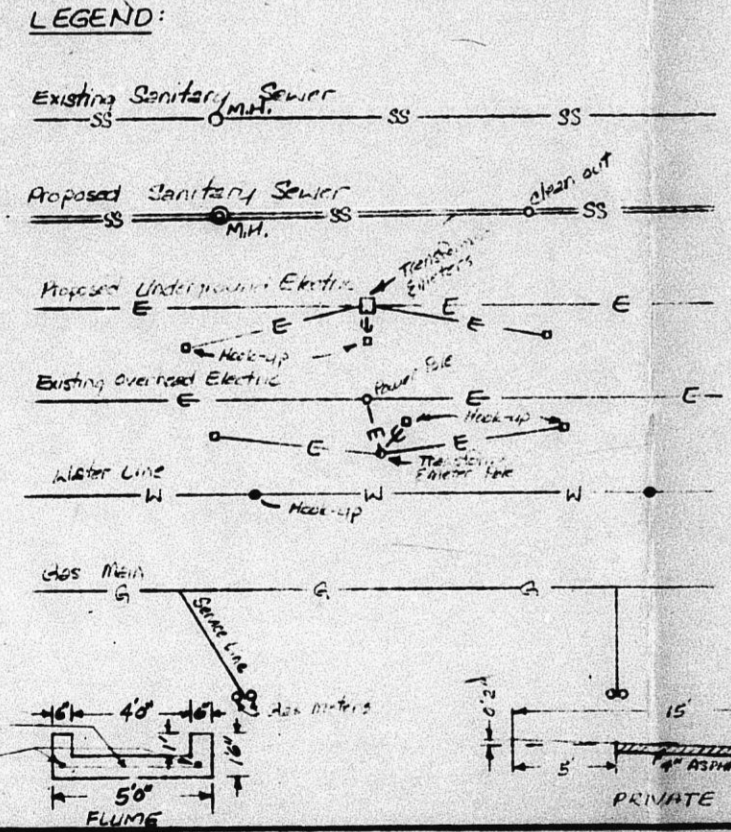
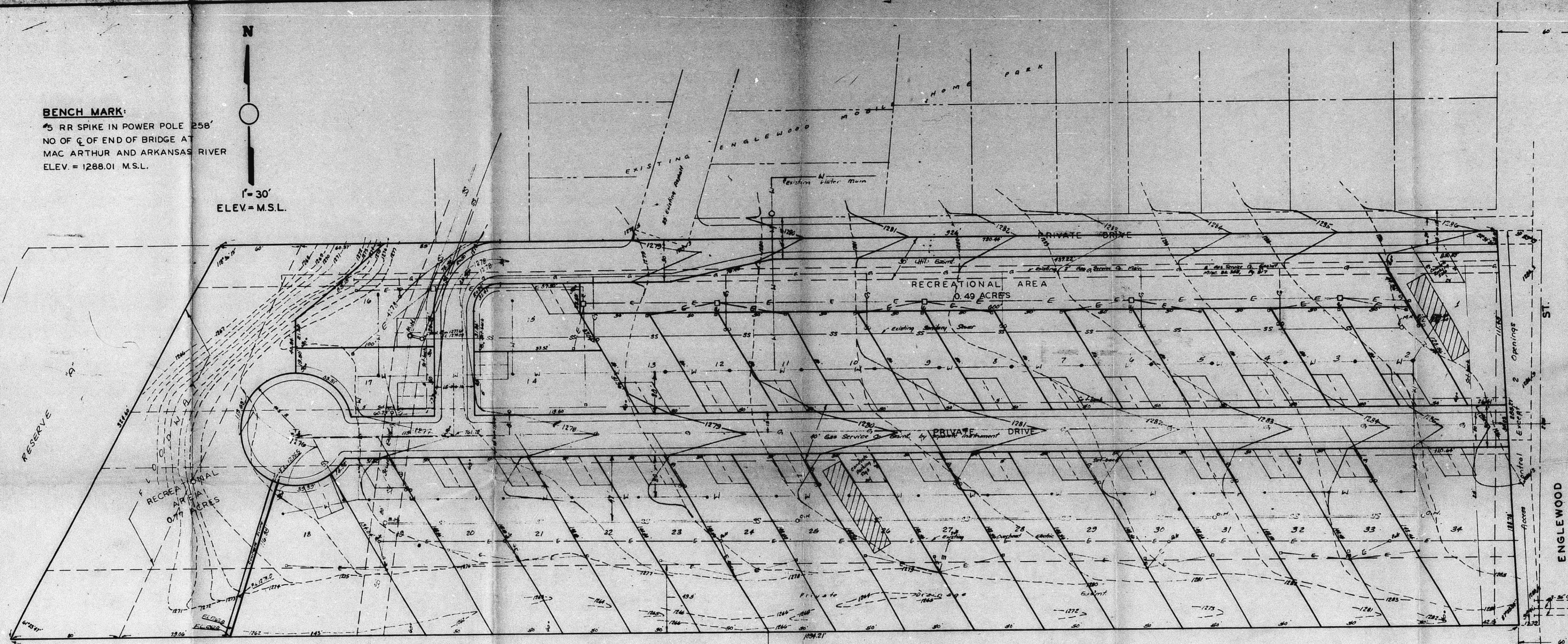
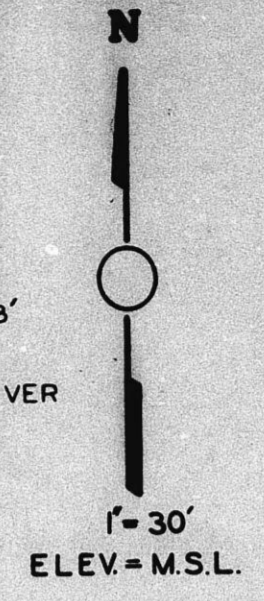
BAUGHMAN COMPANY
 330 LAURA
 WICHITA, KS. 67211

262-7271

DECEMBER 26, 1976

FILMED FROM THE BEST AVAILABLE COPY

BENCH MARK:
 RR SPIKE IN POWER POLE 258'
 NO OF \odot OF END OF BRIDGE AT
 MAC ARTHUR AND ARKANSAS RIVER
 ELEV. = 1288.01 M.S.L.



ENGLEWOOD MOBILE HOME PARK

LEGAL DESCRIPTION:
 LOT 1, BLOCK A, ENGLEWOOD PARK ADDITION, SEDGWICK COUNTY, KANSAS

GROSS AREA OF LOT 1 — 6.61 ACRES
 8% OF GROSS AREA — 0.35 ACRES
 RECREATIONAL AREAS — 1.26 ACRES
 NET AREA OF LOT 1 — 5.35 ACRES
 MOBILE HOME SITES — 34
 DENSITY PER ACRE — 6.4 HOMES

OWNER - DEVELOPER:
 JOHN I. PETERS

*CU-184
 Approved Plans
 Office Copy*

BAUGHMAN COMPANY
 330 LAURA
 WICHITA, KS. 67211

262-7271 DECEMBER 26, 1976