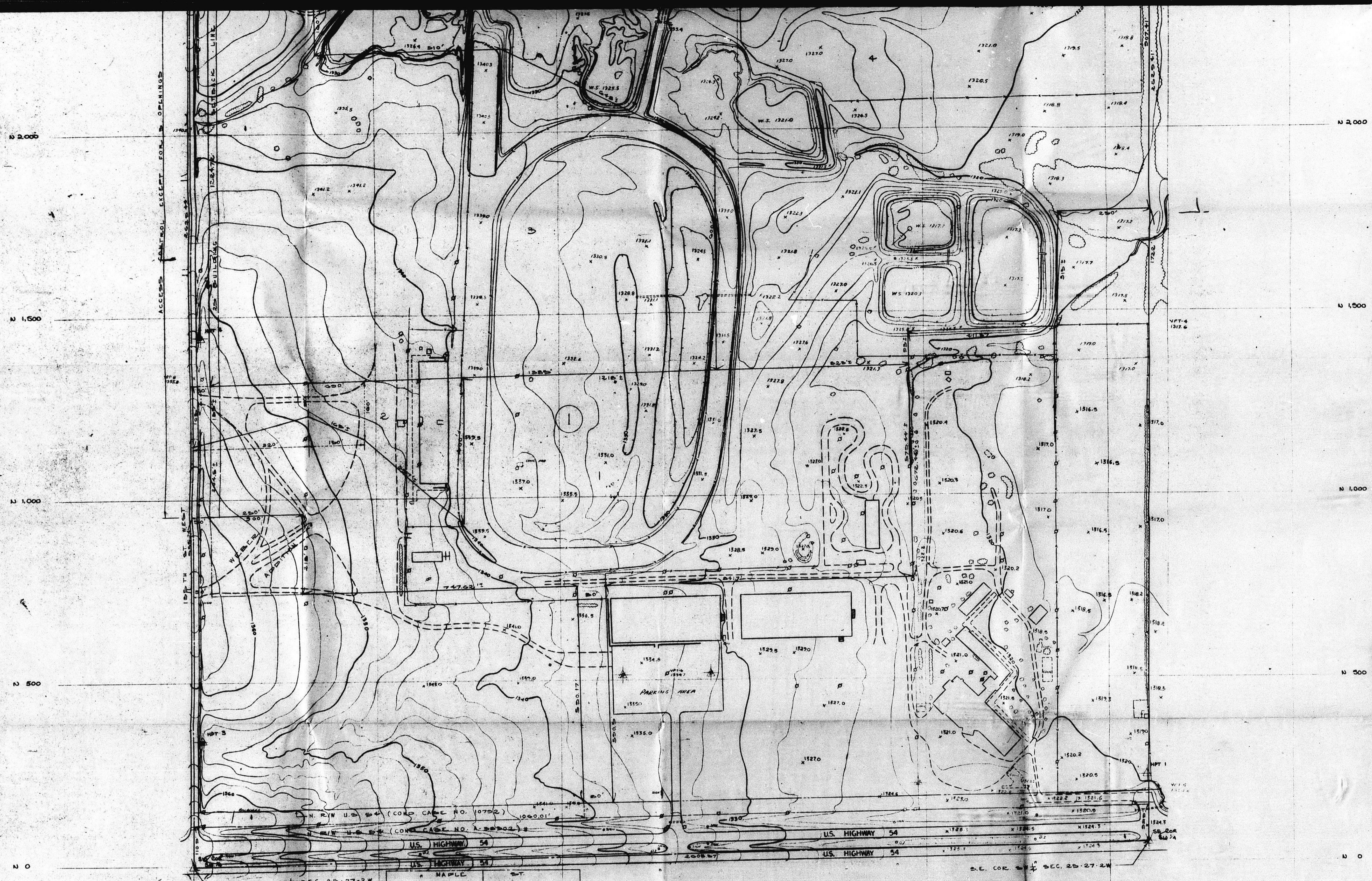
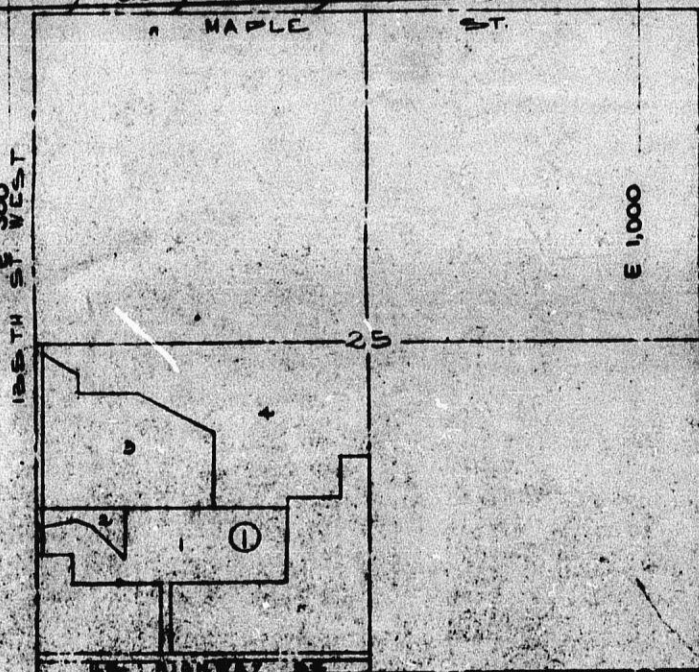


FILMED FROM THE BEST AVAILABLE COPY



GROUND CONTROL BY K.O. TAYLOR, RE.
WICHITA, KANSAS

COMPILED BY PHOTOGRAMMETRIC METHODS FROM
PHOTOGRAPHY TAKEN MARCH 3, 1968
KUCEHA AND ASSOCIATES, INC., DENVER, COLORADO



SCALE: 1" = 100'
CONTOUR INTERVAL: 2'

PRELIMINARY PLAT
CALRE ADDITION

FOR
CALRE, INC.

K.O. TAYLOR, RE.
OCTOBER 21, 1974

"B" CHISELED IN THE SE
WINGWALL OF WESTBOUND
BRIDGE 650' EAST OF THE
S.E. COR. S.W. 1/4 DEC. 25-27-2W.

CU-169

SW 1/4 SEC. 25, T. 27 S., R. 2 W.
WICHITA, SEDGWICK COUNTY,
KANSAS