



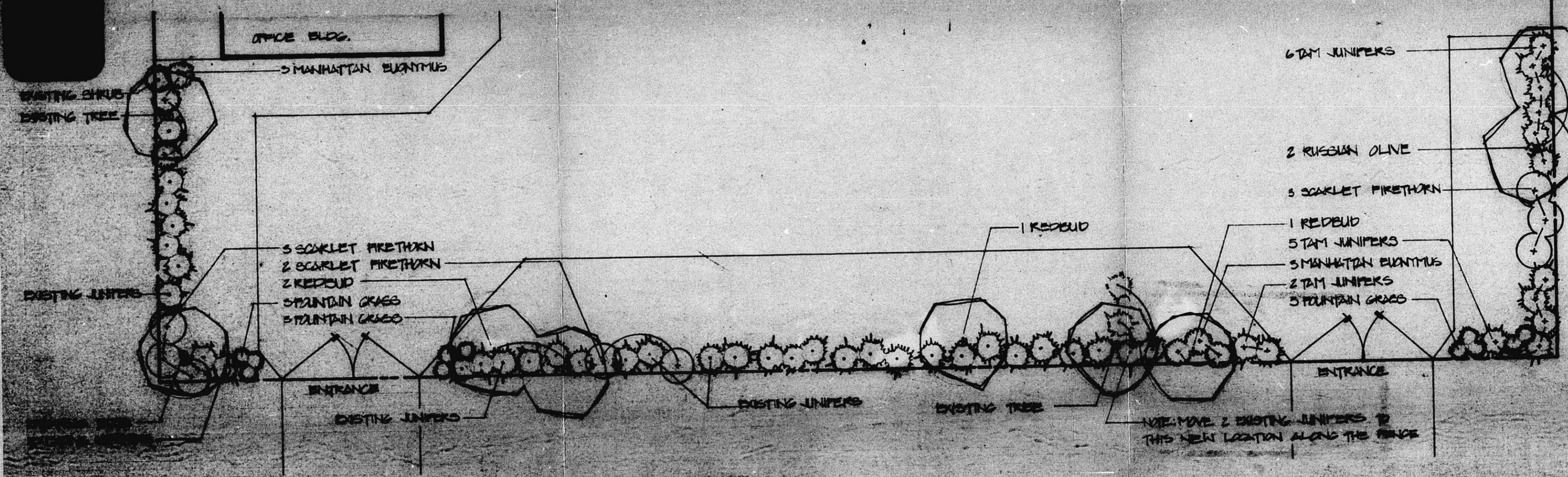
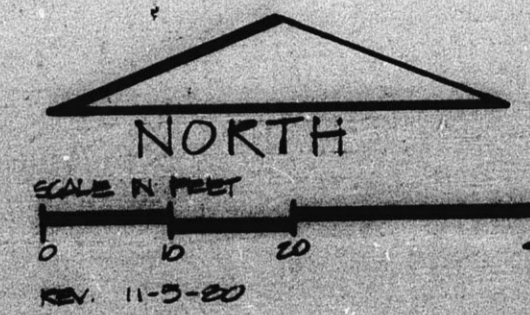
AAA RENT-ALL

OFFICE COPY  
DO NOT REMOVE  
DATE 12-2-83

Approved Revised Landscape Plan - 04-11-73  
see LETTERS DATED 11/12/70 & 12/15/70

PLANT LIST					
QUAN.	COMMON NAME	BOTANICAL NAME	SIZE	COND.	REMARKS
4	REDBUD	CERCIS CANADENSIS	5-6'	B&B	
2	RUSSIAN OLIVE	ELAEAGNUS ANGSTIFOLIA	5-6'	B&B	
6	MANHATTAN EVONYMUS	EVONYMUS KALTESCHOVICUS	2 GAL.	CONT.	
15	TAM JUNIPER	JUNIPERUS SPENS "TAMARISCIFOLIA"	2 GAL.	CONT.	
11	FOUNTAIN GRASS	PENNISETUM RUPPELII	1 GAL.	CONT.	
8	SCARLET FIRETHORN	PYRACANTHA CACCINEA	2 GAL.	CONT.	

NOTE: PLANTING PLAN FOR 5-FOOT WIDE LANDSCAPE AREA PER REQUIREMENTS OF CONDITIONAL USE CASE CU-197.



olinger-smith corporation  
 Consultants in Planning, Design and Construction  
 600 West National Road, Berkeley, California 94704

**AAA RENT-ALL**  
 planting plan

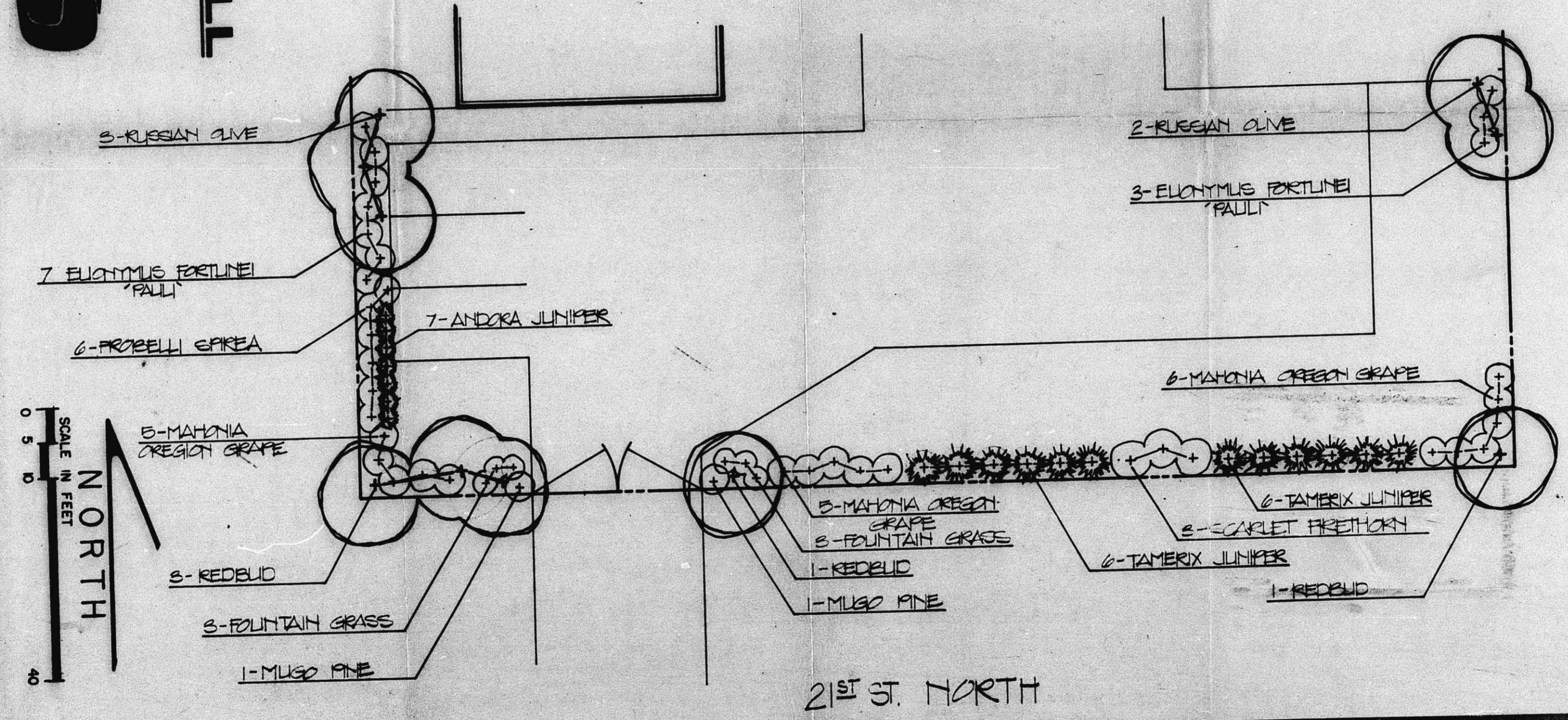
PLANT LIST					
PLAN	COMMON NAME	BOTANICAL NAME	SIZE	COND.	REMARKS
5	REDBUD	CERCIS CANADENSIS	5'-6"	BHB	
5	RUSSIAN OLIVE	ELAEAGNUS ANGLICIFOLIA	5'-6"	BHB	
10	ELIANTHUS FORTUNEI 'PAULI'	ELIANTHUS FORTUNEI 'PAULI'	2 GAL.	CONT.	
6	PROBELLI SPIREA	SPREANGA BUNALDA HY.	2 GAL.	CONT.	
7	ANDORA JUNIPER	JUNIPERUS HORIZONTALIS FLUMOSA	15'-18"	BHB	
15	MAHONIA CREECH GRAPE	MAHONIA ACUTIFOLIA	1 GAL.	CONT.	
6	FOUNTAIN GRASS	FUNUS MUGO MIGHTUS	15'-18"	BHB	
2	MUGO PINE	JUNIPERUS SABINA HY.	2 GAL.	CONT.	
2	TAMERIX JUNIPER	PYRAGANTHA COCCINEA	2"	CONT.	
2	SCARLET FIRETHORN				

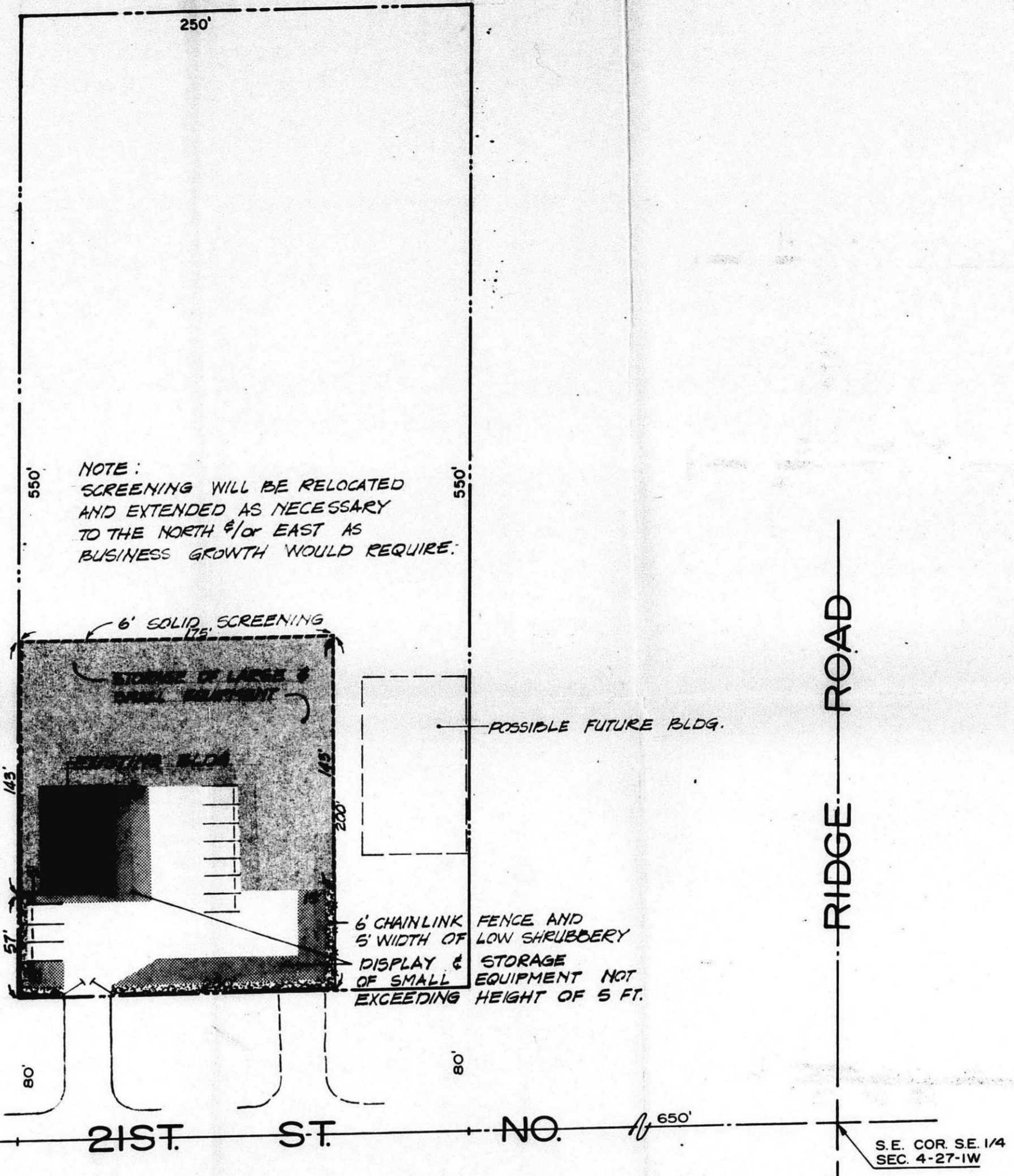
NOTE: PLANTING PLAN FOR 5-FOOT WIDE LANDSCAPE AREA PER REQUIREMENTS OF CONDITIONAL USE CASE CU-197.

*Landscape Plan as per condition # 9 of CU-197.*  
 Approved this 18<sup>th</sup> day of August 1977  
*Jack Albert*

SUPERCEDED

OFFICE COPY  
 DO NOT REMOVE

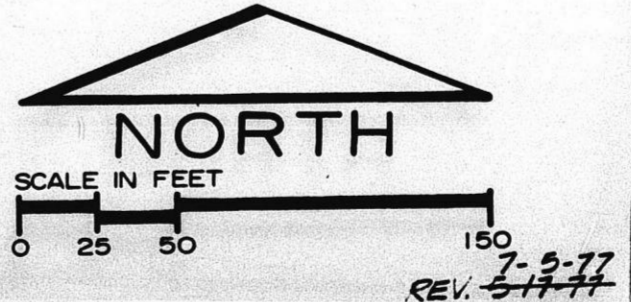


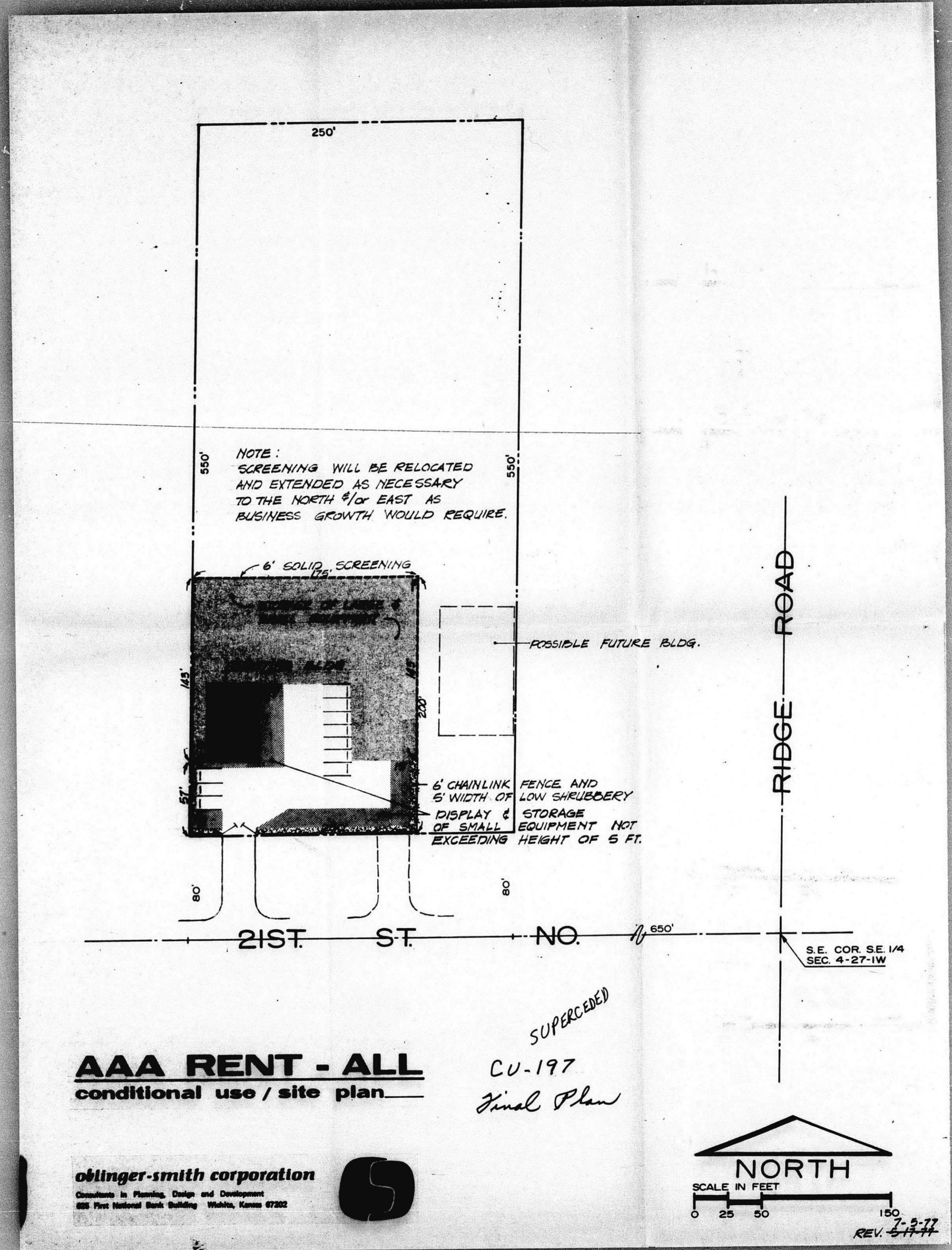


**AAA RENT - ALL**  
conditional use / site plan

*SUPERCEDED*  
CU-197  
Final Plan

**oblinger-smith corporation**  
Consultants in Planning, Design and Development  
658 First National Bank Building Wichita, Kansas 67202





FILMED FROM THE BEST AVAILABLE COPY .....

J. D. Smith Corporation  
 Landscape Architects and Horticulturists  
 100 First Street, San Francisco, California 94103

**AAA RENT - ALL**  
 planting plan

PLANT LIST					
PLAN	COMMON NAME	BOTANICAL NAME	SIZE	COND.	REMARKS
9	REDBUD	CERCIS CANADENSIS	5'-6'	B+B	
8	RUSSIAN OLIVE	ELAEAGNUS ANGLICIFOLIA	5'-6'	B+B	
10	ELIANTHUS FORTUNEI 'PAULI'	ELIANTHUS FORTUNEI 'PAULI'	2 GAL.	CONT.	
6	PROBELLII SPIREA	SPIRABA RUMALDA HY	2 GAL.	CONT.	
7	ANDORA JUNIPER	JUNIPERUS HORIZONTALIS PLUMOSA	19'-18'	B+B	
15	MAHONIA GREEN GRAPE	MAHONIA ACUTIFOLIA	1 GAL.	CONT.	
6	FOUNTAIN GRASS	FILIPHA GRACILLIMA	15'-18'	B+B	
12	MUGO PINE	FINUS MUGO MUGHIE	2 GAL.	CONT.	
8	TAMERIX JUNIPER	JUNIPERUS SABINA HY	2	CONT.	
8	SCARLET FIRETHORN	PYRACANTHA COCCINEA			

NOTE: PLANTING PLAN FOR 3-FOOT WIDE LANDSCAPE AREA PER REQUIREMENTS OF CONDITIONAL USE CASE CU-197.

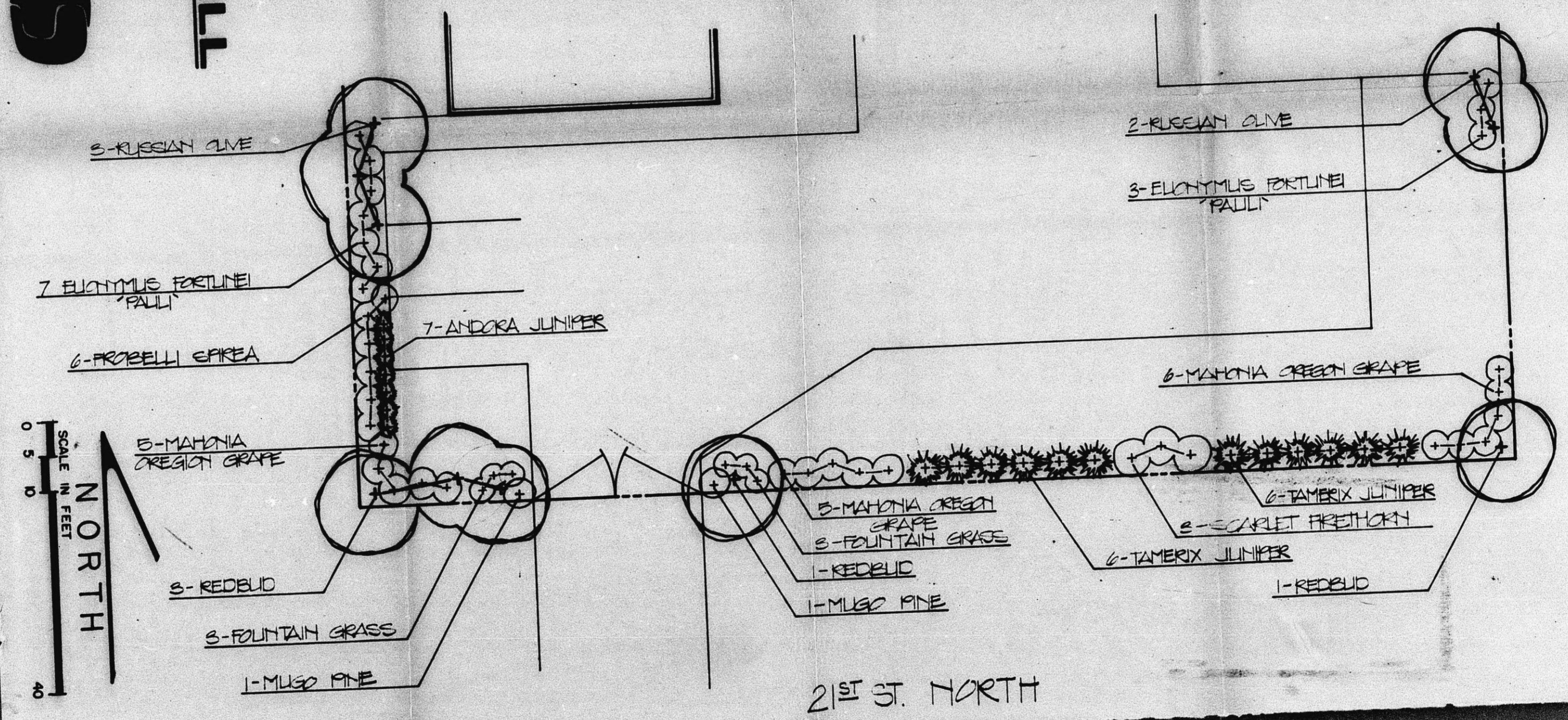
Landscape Plan as per condition #9 of CU-197.

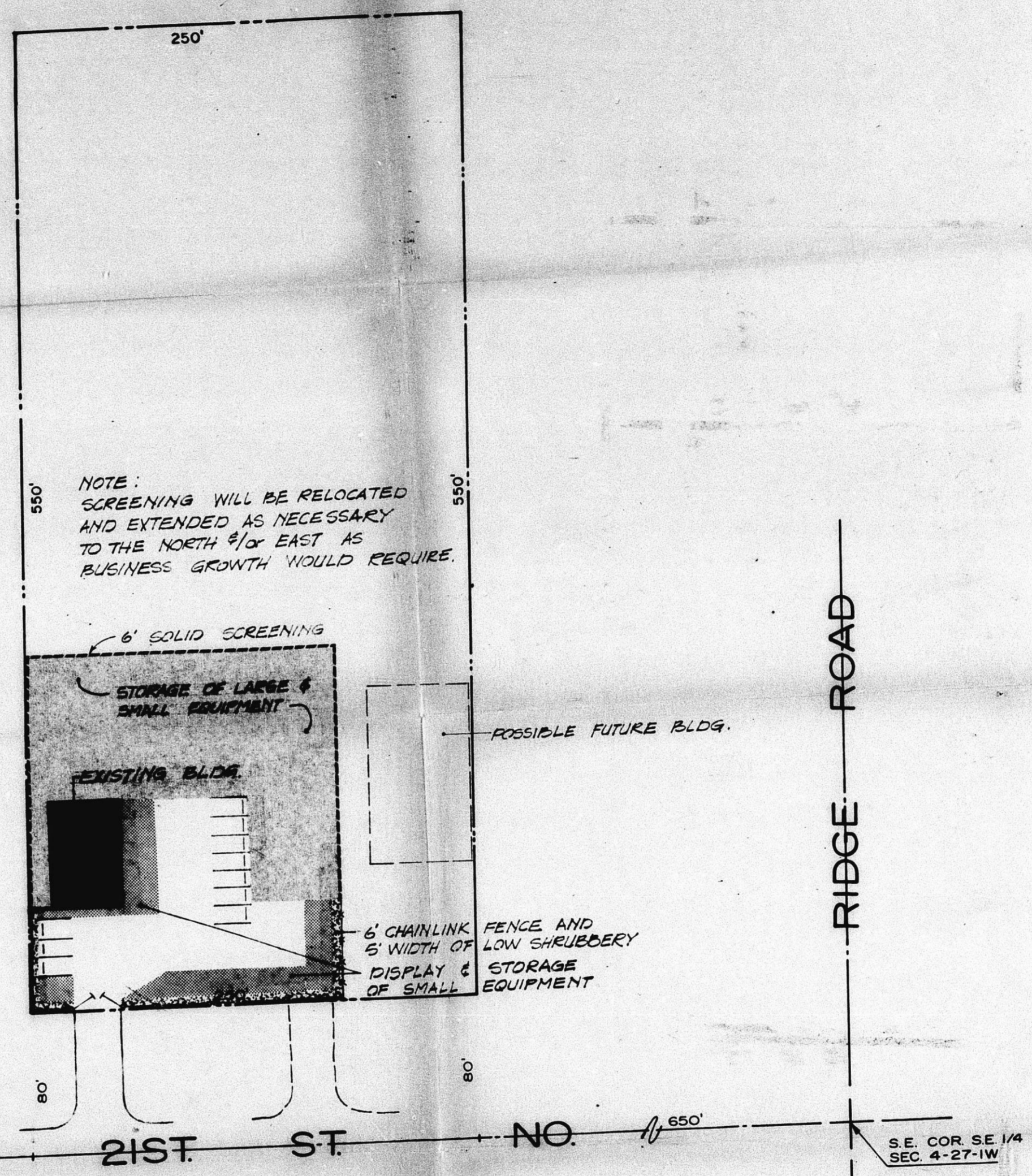
approved this 18<sup>th</sup> day of August 1977

OFFICE COPY  
DO NOT REMOVE

SUPERCEDED

*J. D. Smith*





**AAA RENT - ALL**  
conditional use / site plan

*Preliminary Plan*  
CU-197

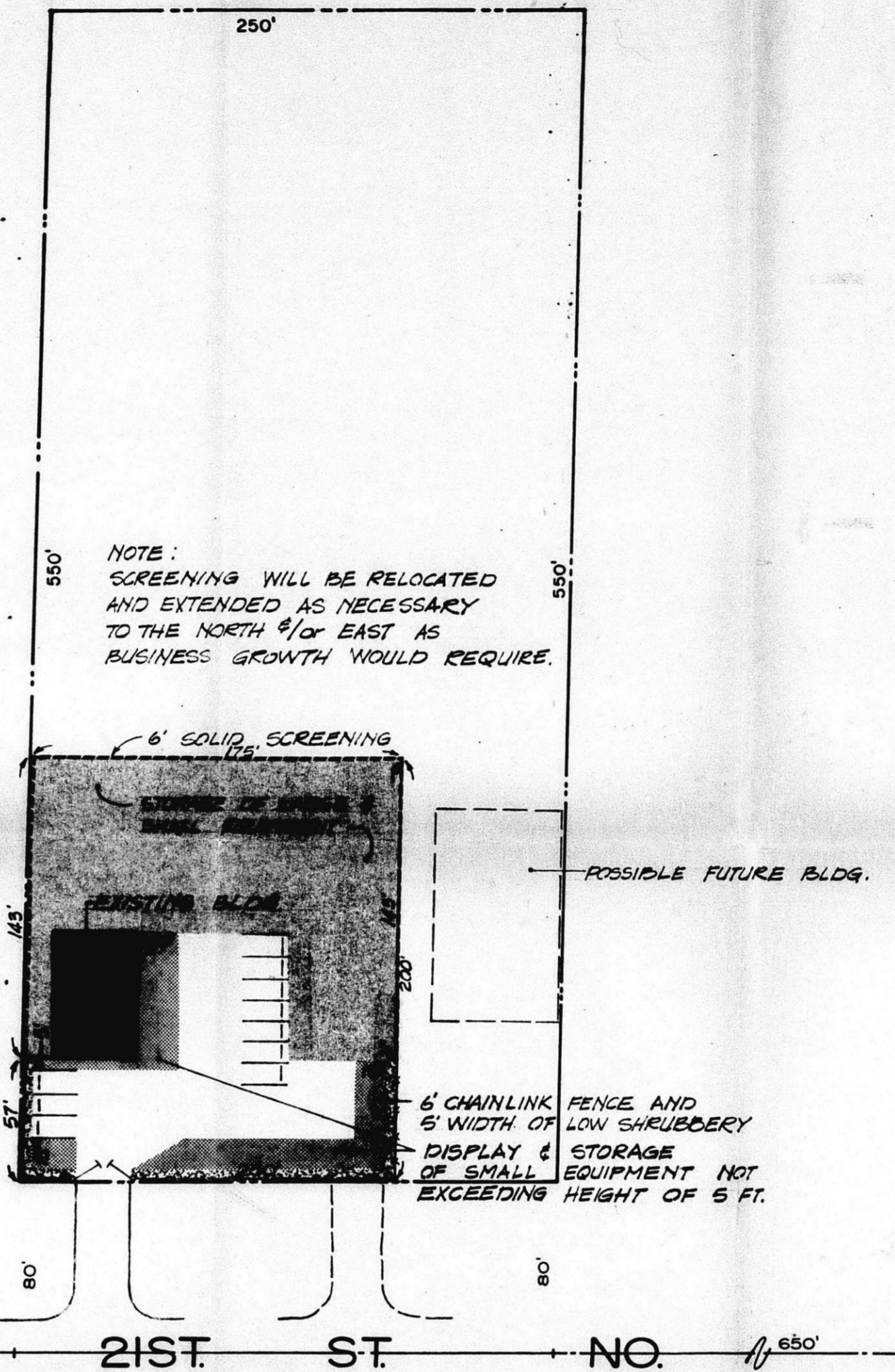
**OFFICE COPY**  
DO NOT REMOVE

**oblinger-smith corporation**  
Consultants in Planning, Design and Development  
625 First National Bank Building - Wichita, Kansas 67202

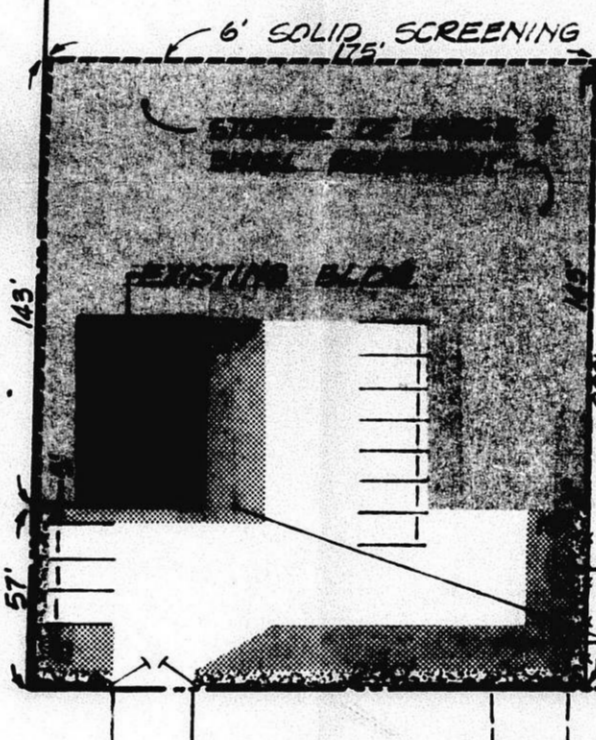


REV. 6-17-77

FILMED FROM THE BEST AVAILABLE COPY



NOTE:  
SCREENING WILL BE RELOCATED  
AND EXTENDED AS NECESSARY  
TO THE NORTH &/or EAST AS  
BUSINESS GROWTH WOULD REQUIRE.



6' CHAINLINK FENCE AND  
6' WIDTH OF LOW SHRUBBERY  
DISPLAY & STORAGE  
OF SMALL EQUIPMENT NOT  
EXCEEDING HEIGHT OF 6 FT.

POSSIBLE FUTURE BLDG.

RIDGE ROAD

21ST ST NO.

S.E. COR. SE 1/4  
SEC. 4-27-1W

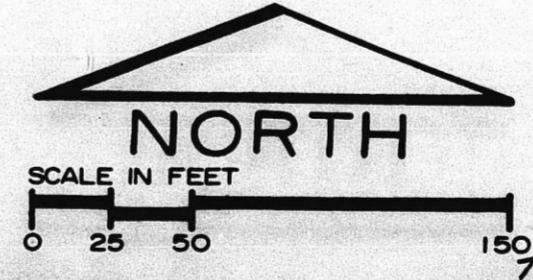
**AAA RENT - ALL**  
conditional use / site plan

*Final Plan*  
SUPERCEDED  
CU-197

**obliger-smith corporation**  
Consultants in Planning, Design and Development  
600 First National Bank Building Wichita, Kansas 67202

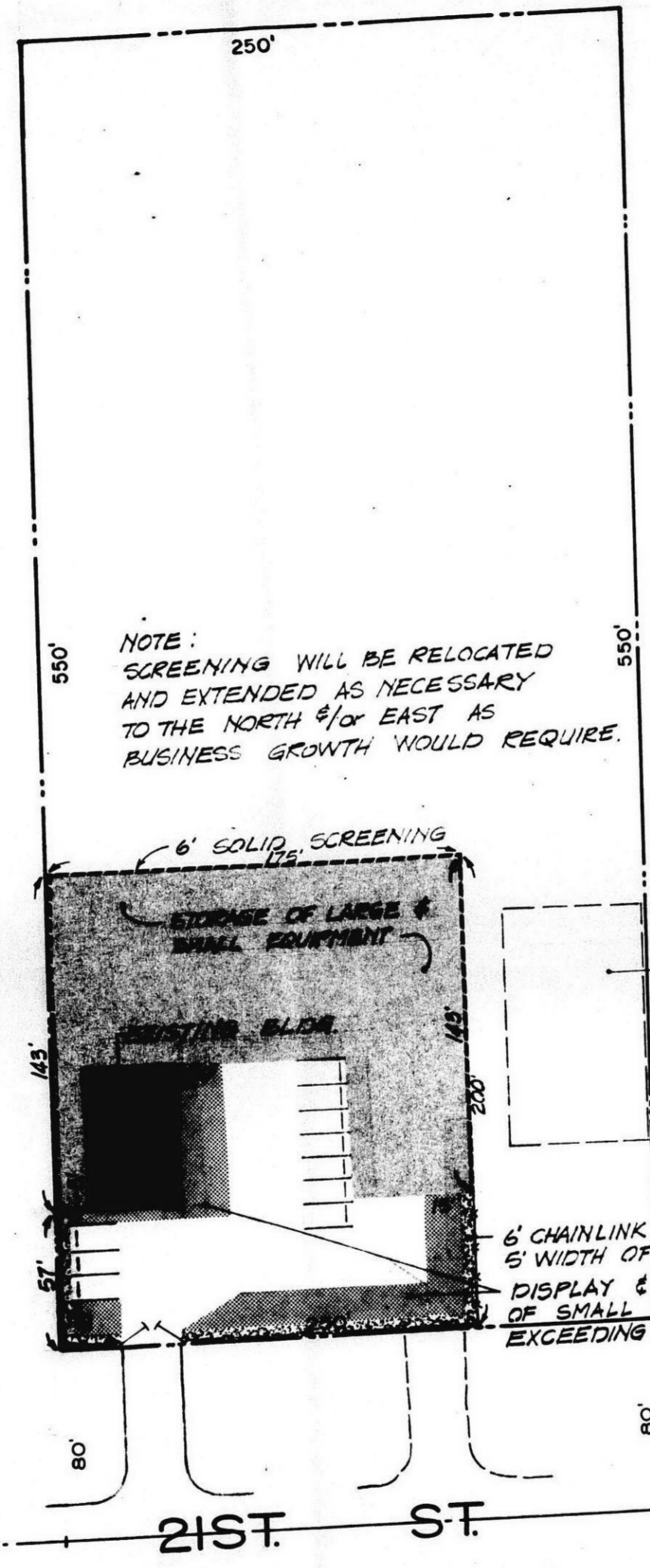


OFFICE COPY  
DO NOT REMOVE



7-9-77  
REV. 5-17-77

FILMED FROM THE BEST  
AVAILABLE COPY



NOTE:  
SCREENING WILL BE RELOCATED  
AND EXTENDED AS NECESSARY  
TO THE NORTH 1/2 OF EAST AS  
BUSINESS GROWTH WOULD REQUIRE.

**AAA RENT - ALL**  
conditional use / site plan

*SUPERCEDED*  
CU-197  
*Final Plan*

**OFFICE COPY**  
DO NOT REMOVE

**oblinger-smith corporation**  
Consultants in Planning, Design and Development  
628 First National Bank Building Wichita, Kansas 67202

