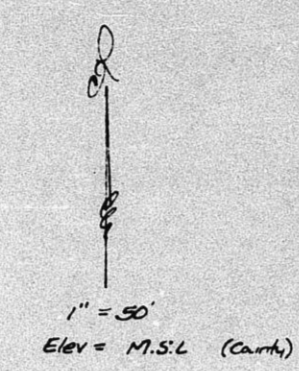
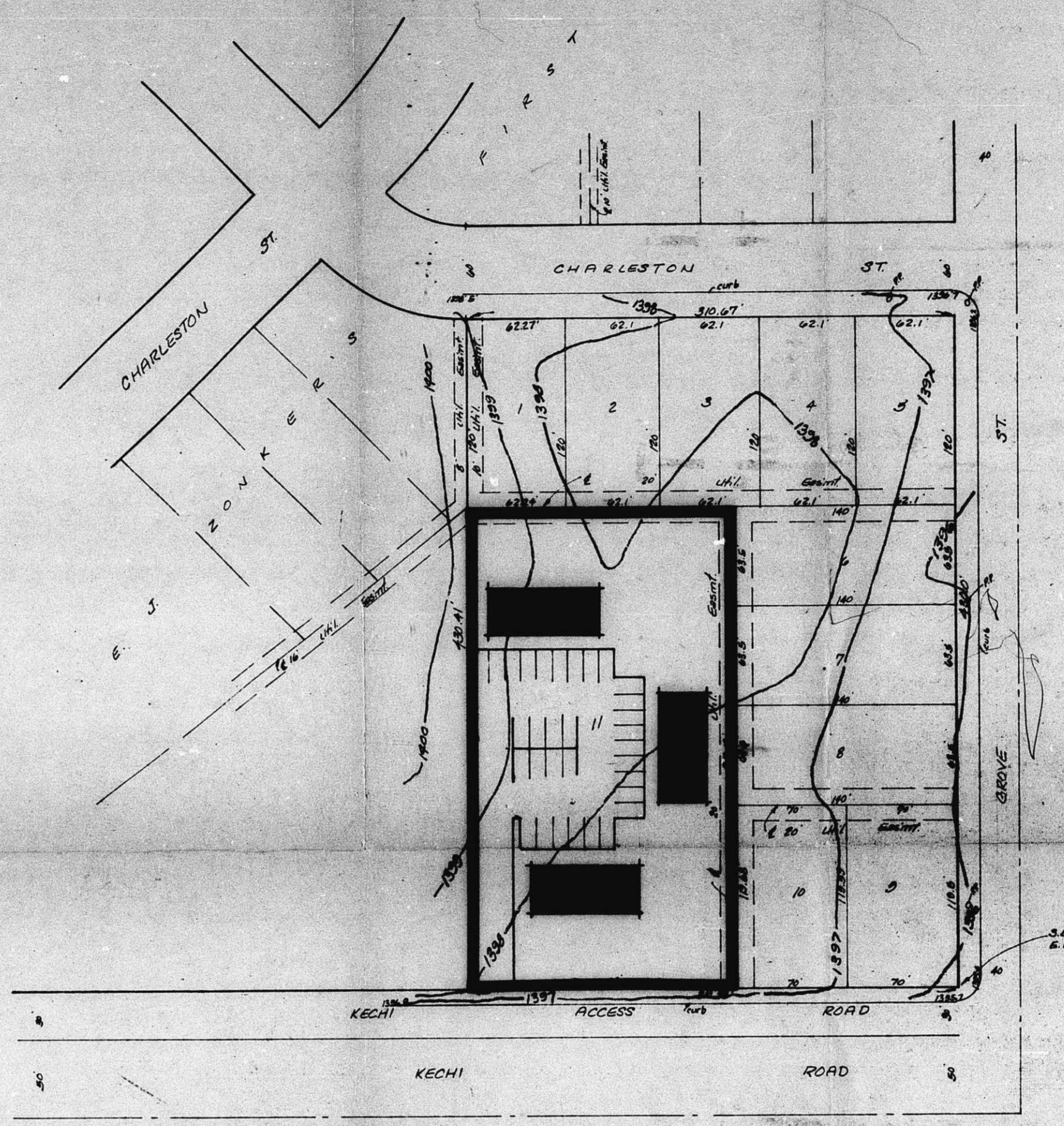
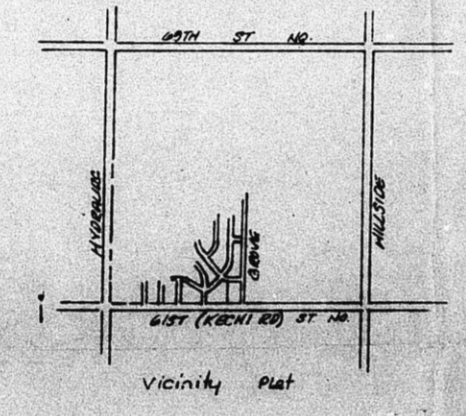


CU-200



BENCH MARK
Square cut on S.W. cor. corner of
Mobil sign 75' N & 50' E of S.W.
Cor. Sta. 10-250-116
Elevation = 1354.71 M.S.L.



S.E. Cor. Lot 1, Blk. 1, E.J. Zonker's 1st Add.

BENCH MARK (not this survey)
7' 10" W of S.W. cor. of E.J. Zonker's 1st Add.
at S.W. Cor. of E.J. Zonker's 1st Add.
Elev. = 1357.88 M.S.L.

PRELIMINARY PLAT
SEIBEL ADDITION

LOT 1, EXCEPT THAT PART LYING WEST OF THE EXTENDED EAST LINE OF LOT 2,
BLOCK 1, E.J. ZONKER'S FIRST ADDITION TO SEDAWICK COUNTY, KANSAS

GERALD D. SEIBEL

CU-200

SAUBERMAN COMPANY 21 OCT 77

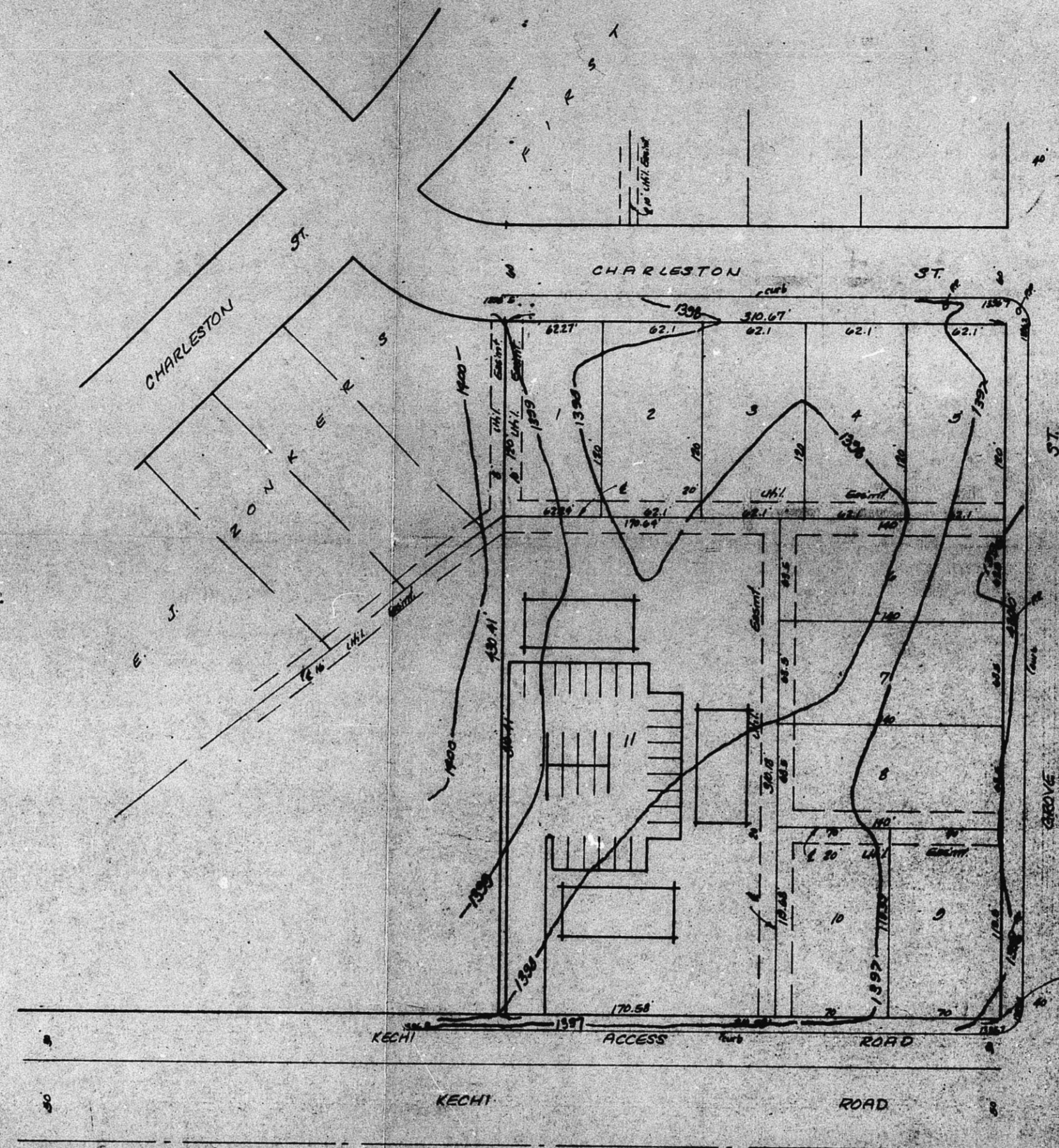
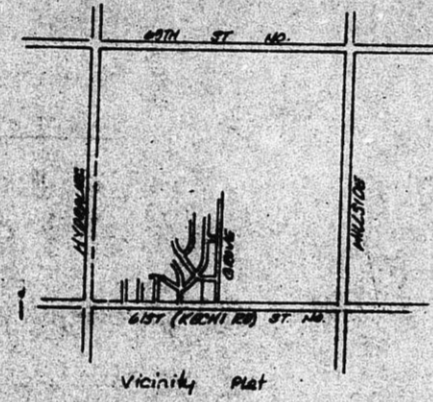


C.U. - 200

Block 1 - OK
 Block 2 lots 1, 3 out
 Block 3 lots 7, 10, 14 out
 Block 4 lots 1, 2, 23, 24 out
 Block 6 lot 31 out

1" = 50'
Elev. M.S.L. (Cont.)

BENCH MARK
Square cut on S.W. Cor. cont. base of
Public Sign 35' N. & 30' E. of S.W.
Cor. of 11-28-06
Elevation = 1384.71 M.S.L.



Sub. Cont. Lot 1, Blk. 1
E.L. Zonkers Plat
Elev. 1385.28 M.S.L.

PRELIMINARY PLAT
SEIBEL ADDITION

LOT 1, EXCEPT THAT PART LYING WEST OF THE EXTENDED EAST LINE OF LOT 2,
BLOCK 1, E.L. ZONKERS' FIRST ADDITION TO SEDGWICK COUNTY, KANSAS

GERALD D. SEIBEL

CU-200