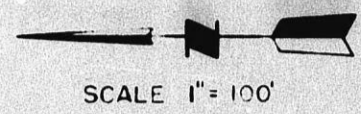


CU-201

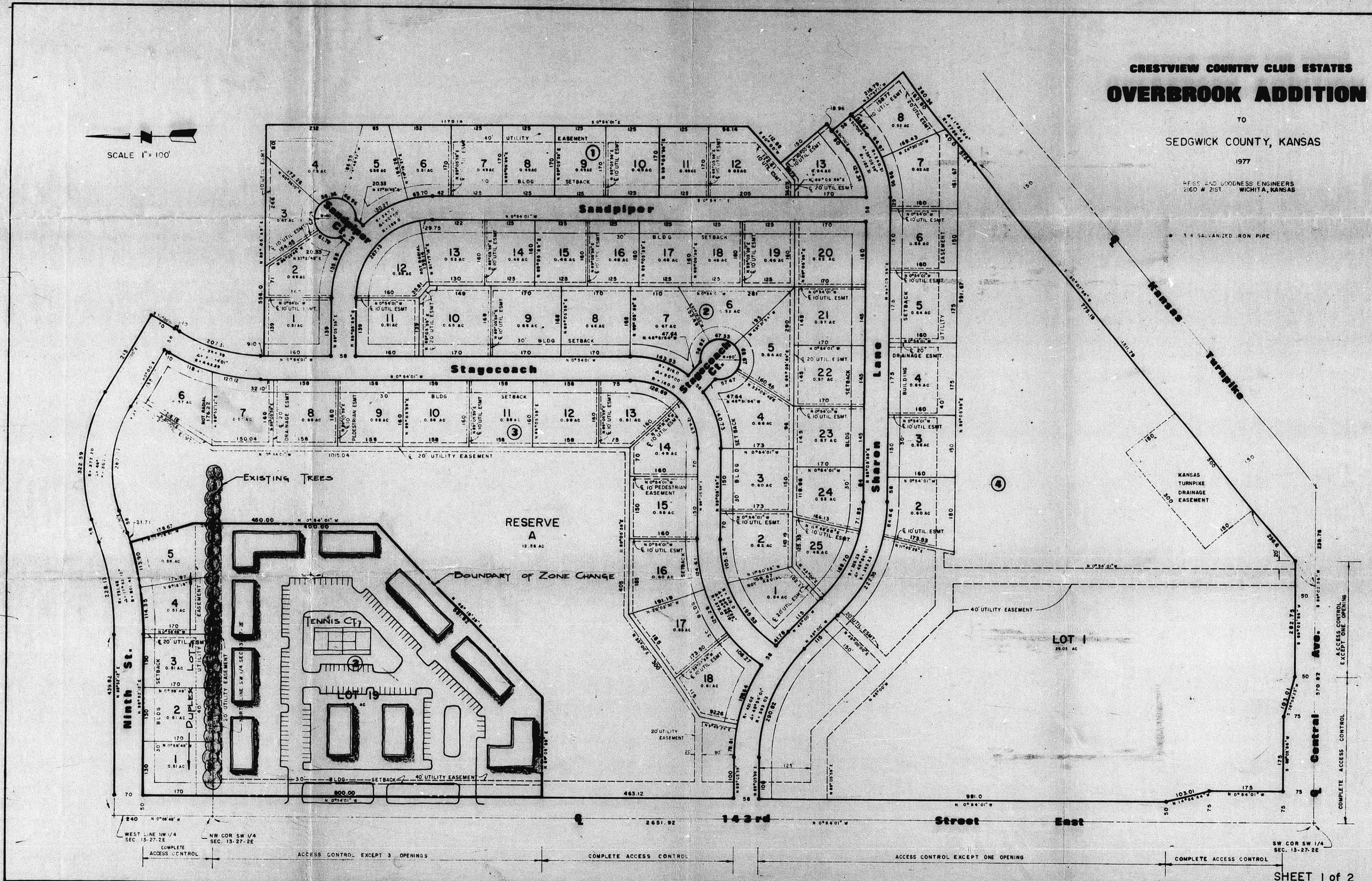


SCALE 1" = 100'

# CRESTVIEW COUNTRY CLUB ESTATES OVERBROOK ADDITION

TO  
SEDGWICK COUNTY, KANSAS  
1977

HESB AND GOODNESS ENGINEERS  
2160 W. 25th  
WICHITA, KANSAS



SHEET 1 of 2

CU-201

FILMED FROM THE BEST  
AVAILABLE COPY