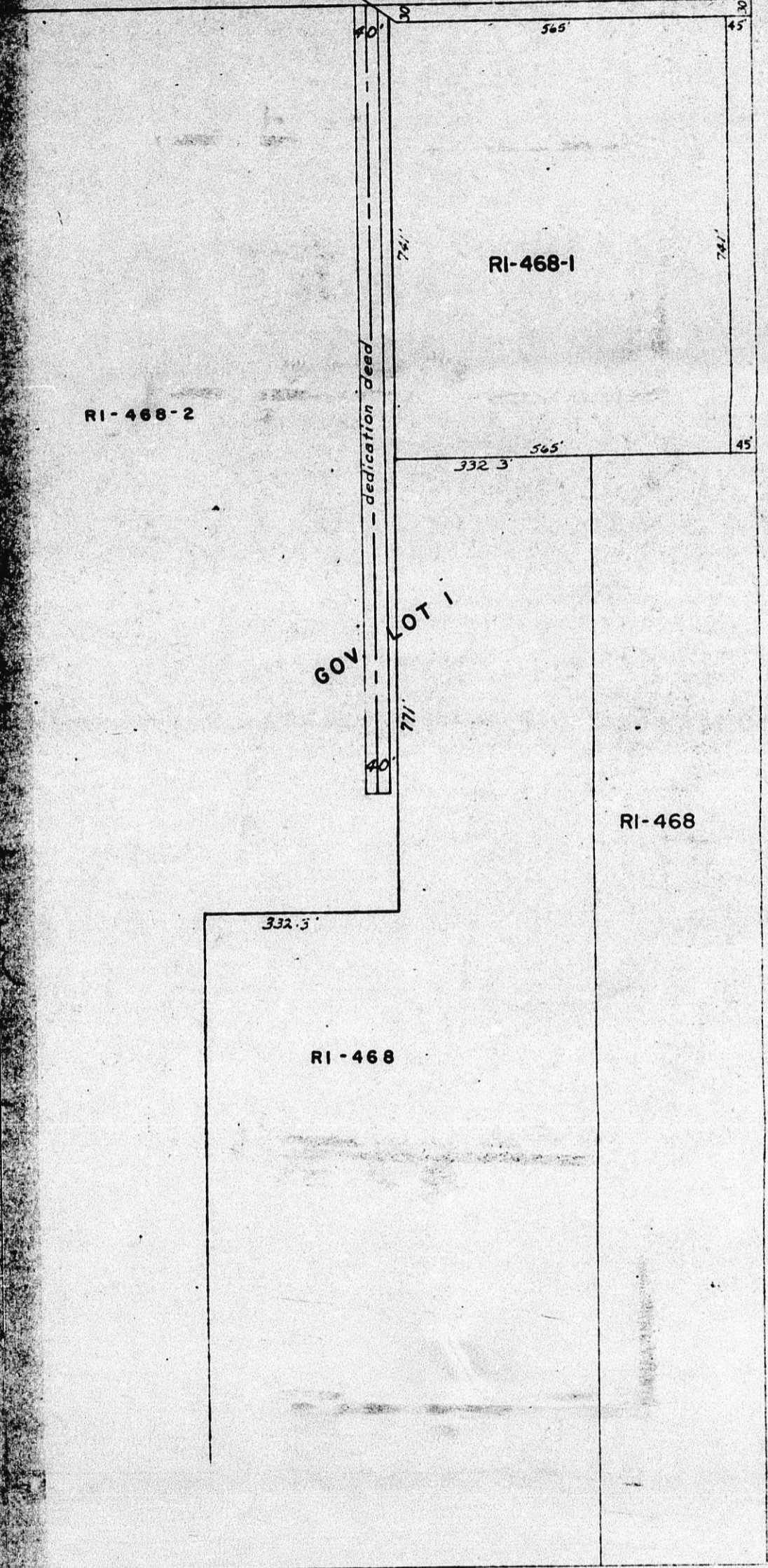


CU-203

N.W. 1/4 SEC. 35, TWP 28S, R.1E

R1
138



REHABILITATION PLAN

NOTE: UPON COMPLETION OF OPERATIONS
ADDITIONAL TREES WILL BE
PLANTED TO FULLY SCREEN
AREA FROM ALL RESIDENCES

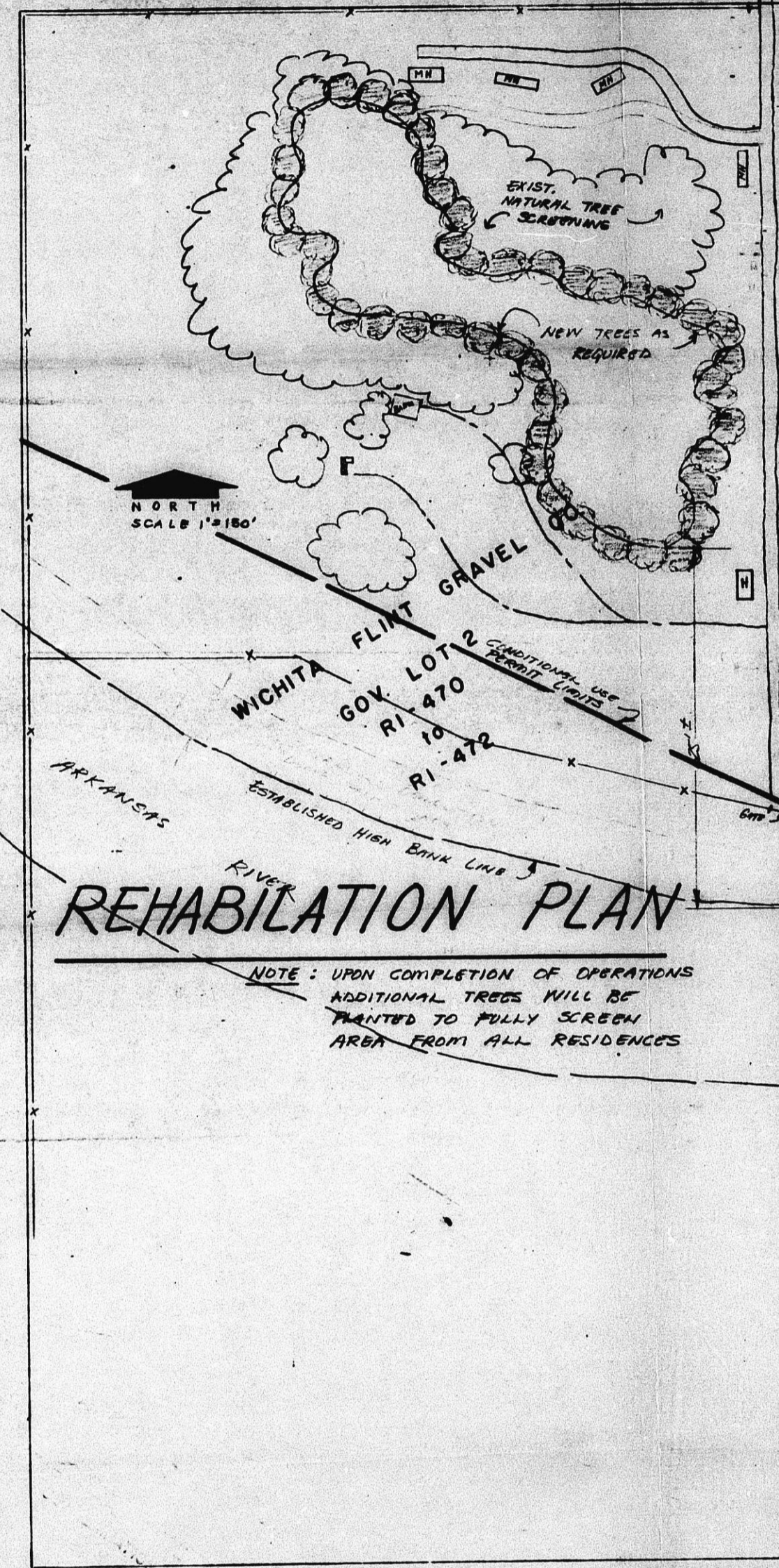
THIS SHEET PREPARED UNDER SUPERVISION OF
SEDGWICK COUNTY CLERK

CU-203

CU-203

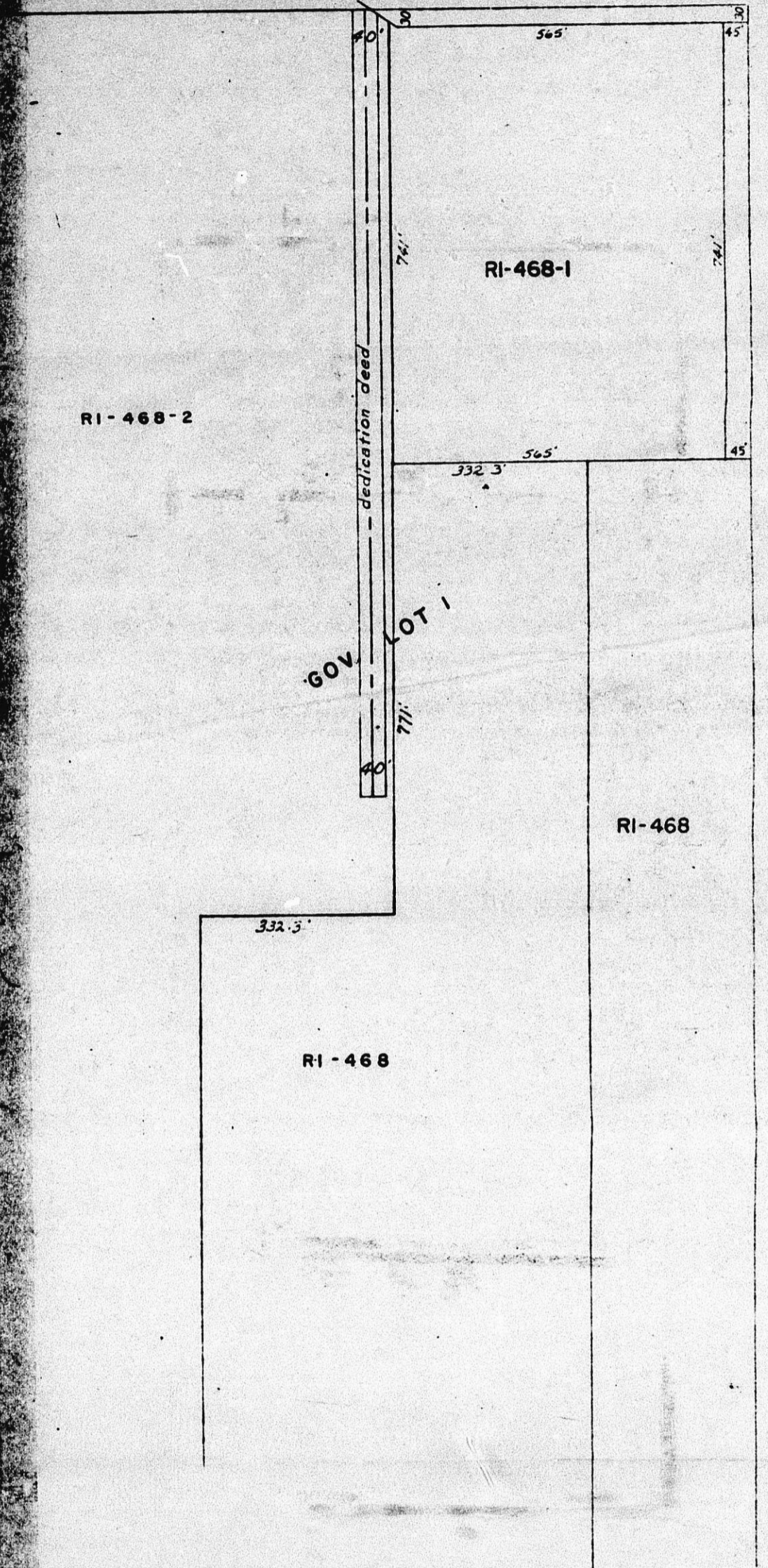
N.W. 1/4 SEC. 35, TWP. 28S, R.1E

R1
138



REHABILITATION PLAN

NOTE: UPON COMPLETION OF OPERATIONS
ADDITIONAL TREES WILL BE
PLANTED TO FULLY SCREEN
AREA FROM ALL RESIDENCES



THIS SHEET PREPARED UNDER SUPERVISION OF
SEDGWICK COUNTY CLERK

CU-203