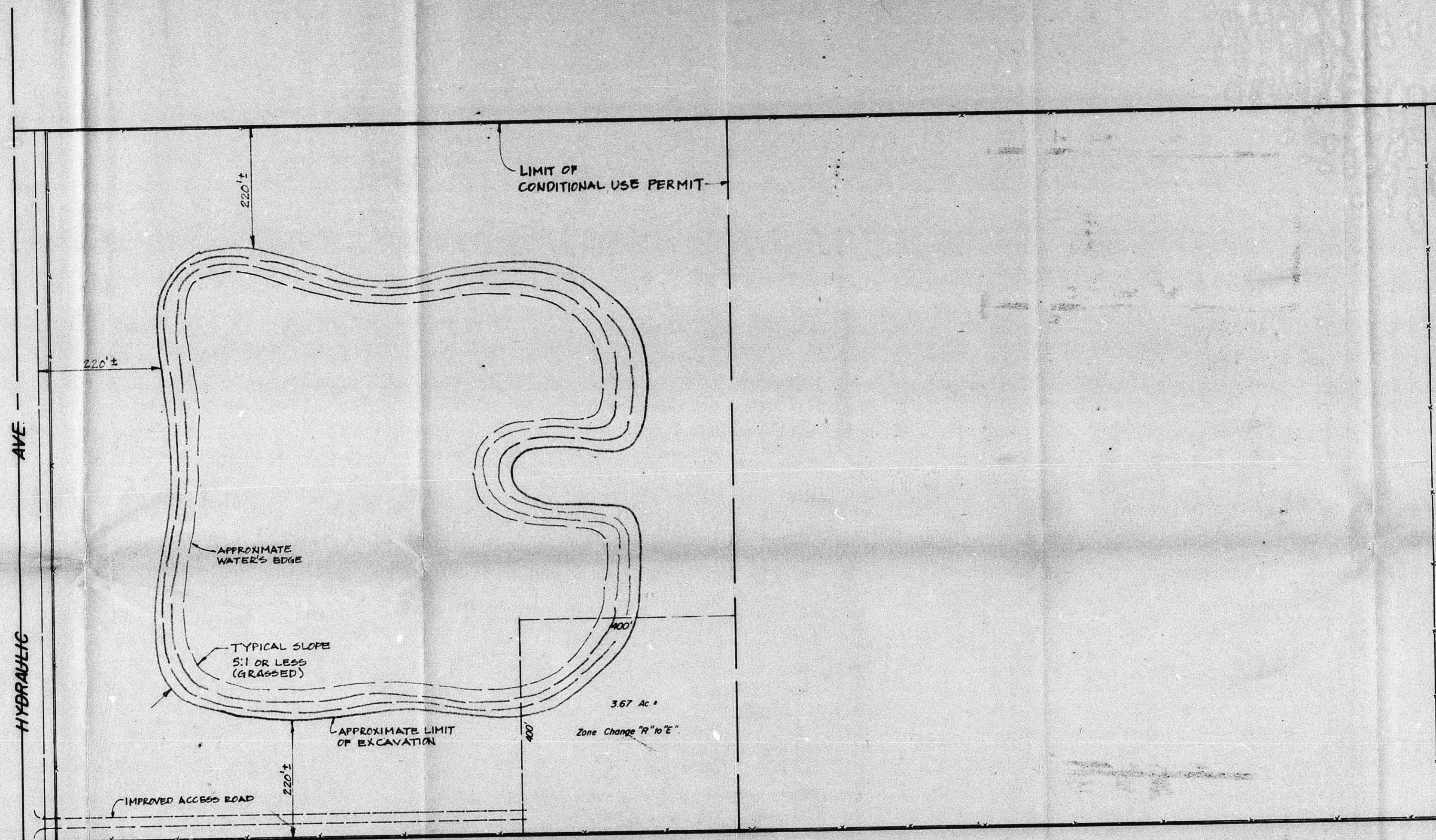


CU-214



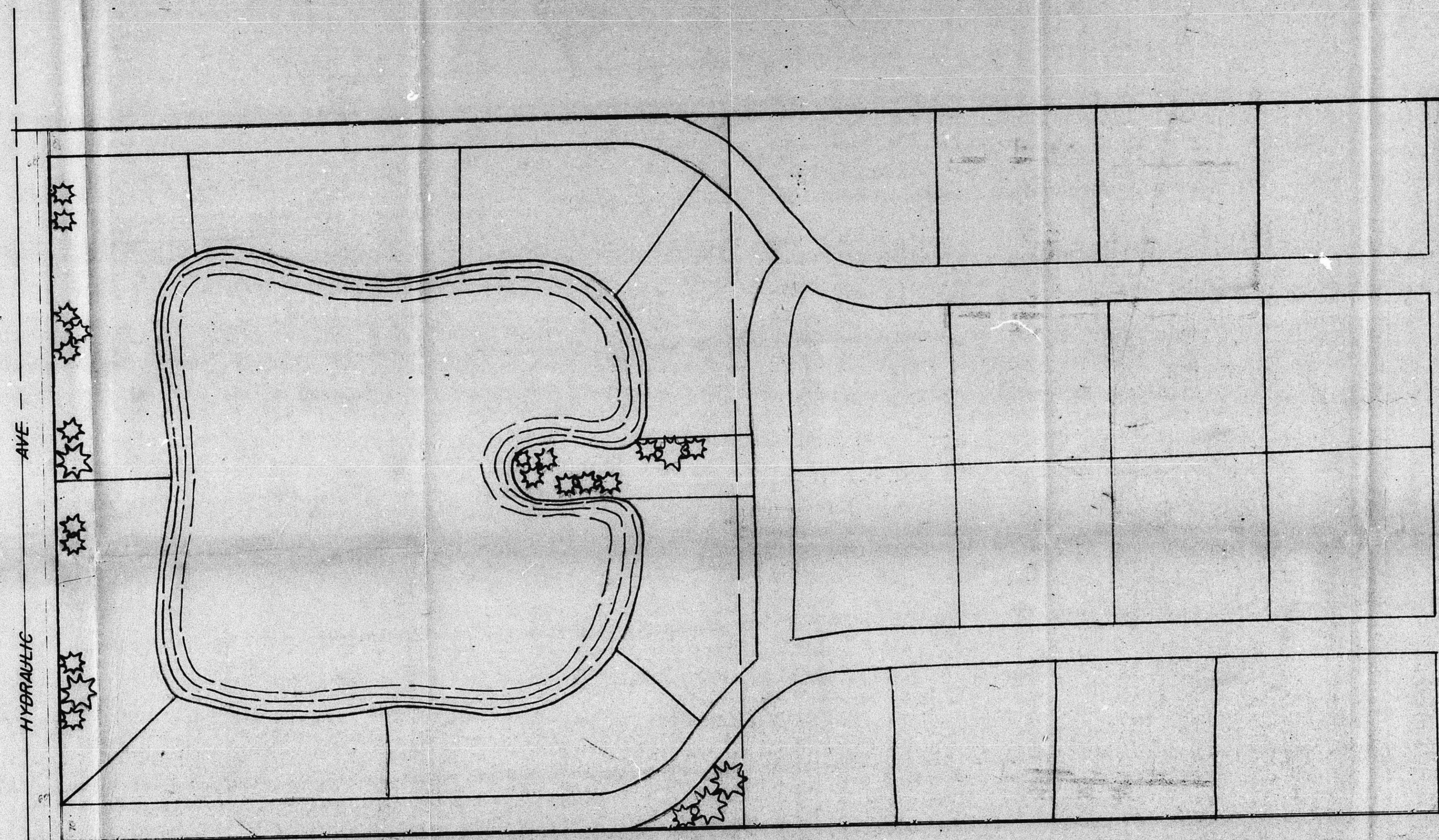
OWNER: R.A. RUUD & SON, INC.
 MAPC CASE NO. CU-214
 AND NO. SCZ-0416

OPERATIONAL PLAN
 FOR
 SAND AND GRAVEL EXTRACTION
 AND
 READY-MIX CONCRETE PLANT

MDEHRING & ASSOCIATES
 WICHITA

CU-214

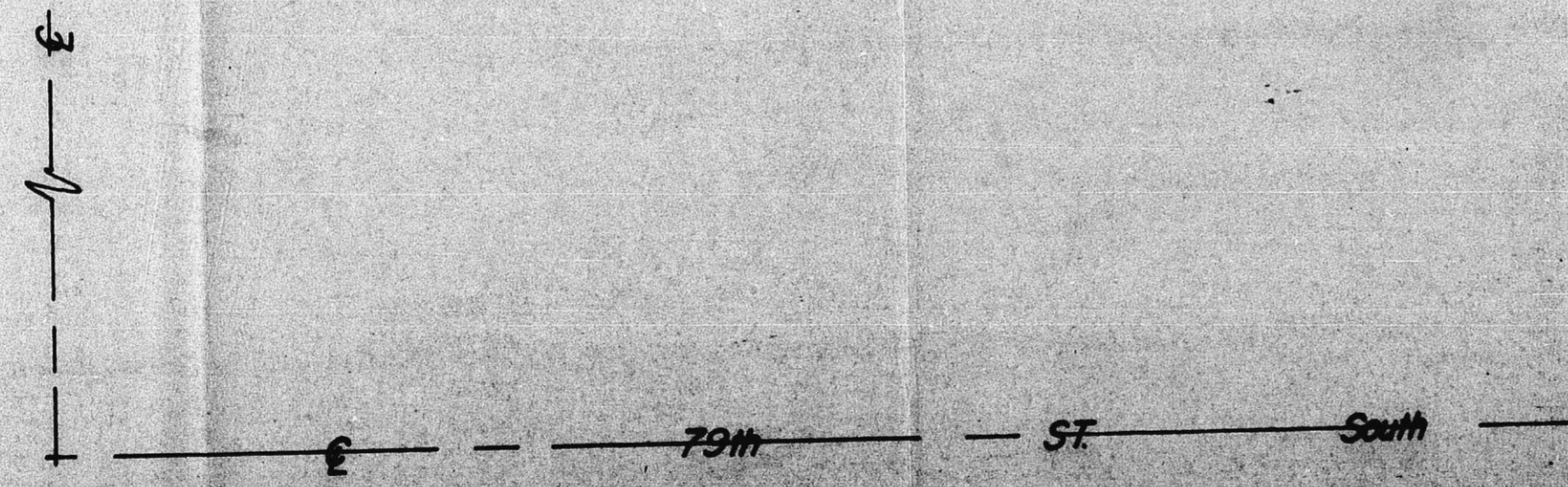
CU-211



RESIDENTIAL DEVELOPMENT PLAN
FOR THE NORTH 1/2 S.W. 1/4 SEC. 3, T29S, R1E

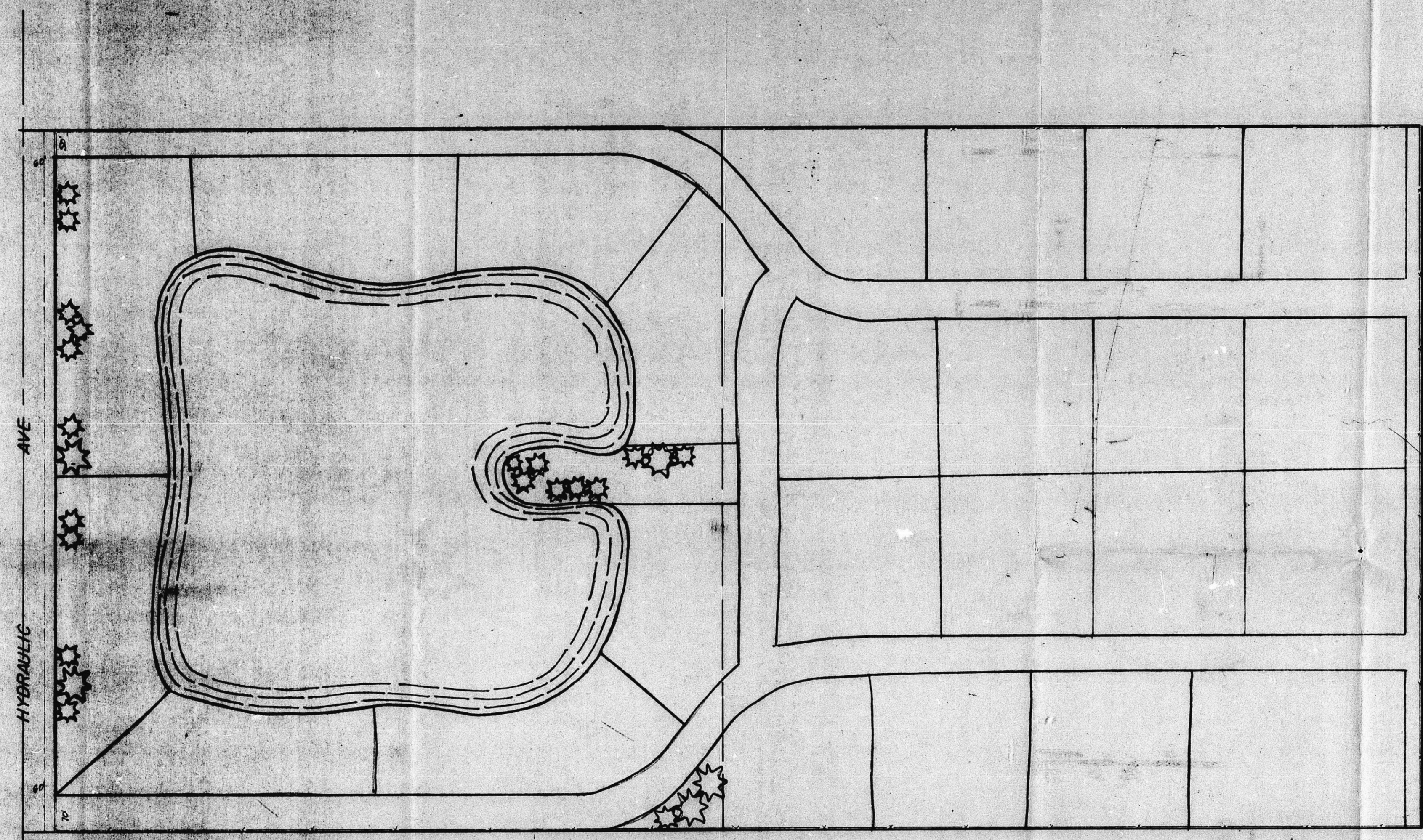
MOHRING & ASSOCIATES
WICHITA

CU-211



FILMED FROM THE BEST
AVAILABLE COPY

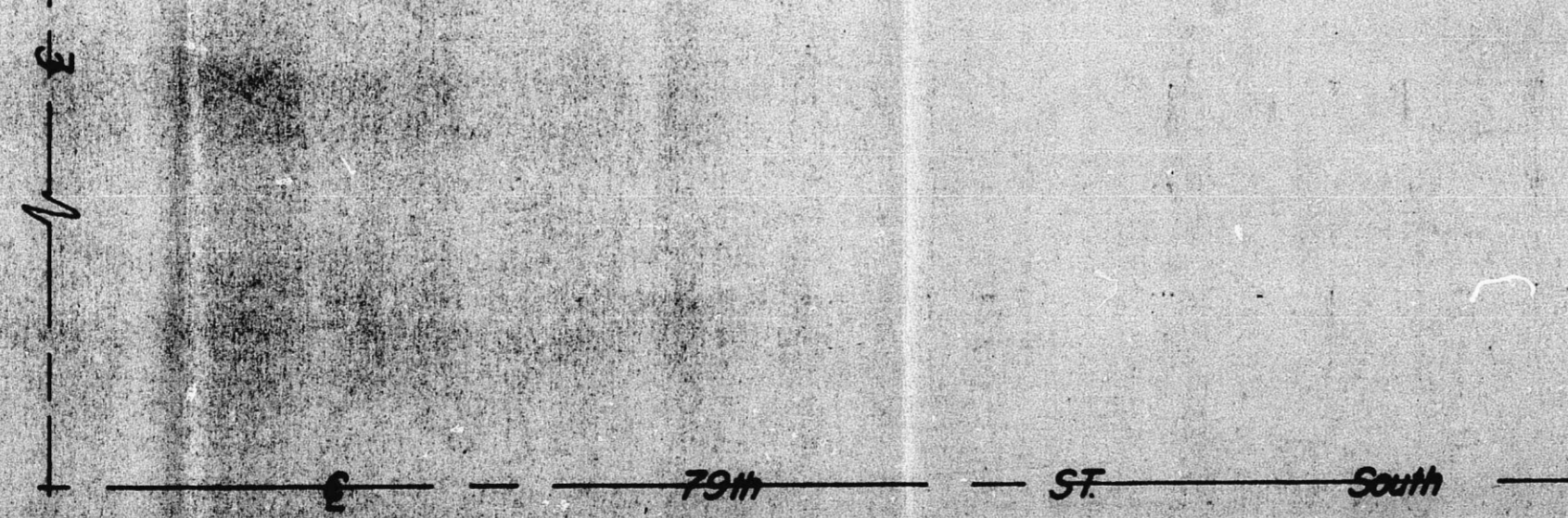
CU-211



RESIDENTIAL DEVELOPMENT PLAN
 FOR THE NORTH 1/2 S.W. 1/4 SEC. 3, T29S, R1E

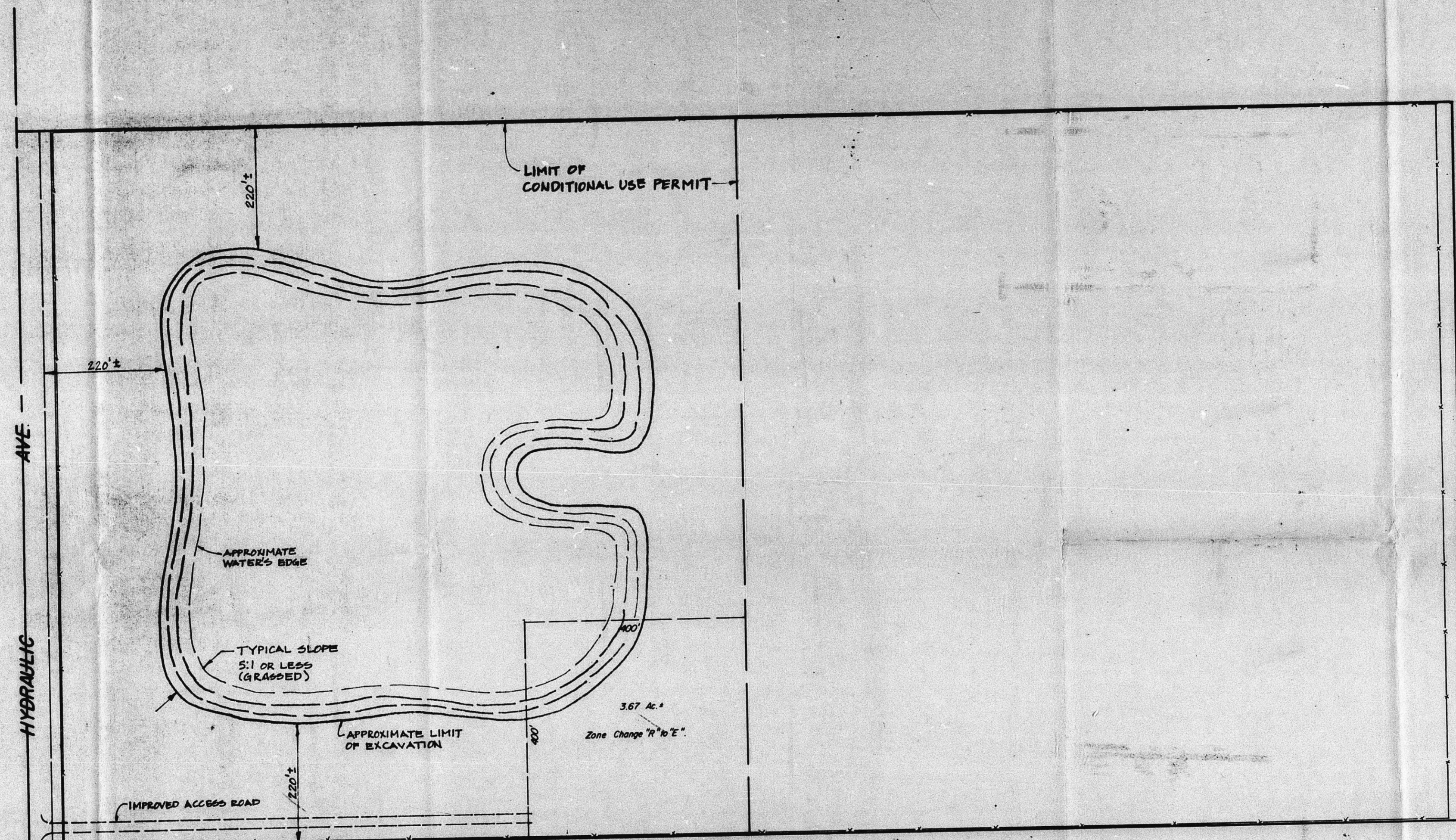
MOHRING & ASSOCIATES
 WICHITA

CU-211



FILMED FROM THE BEST
 AVAILABLE COPY

CU-214



OWNER: R.A. RUUD & SON, INC.
 MAPC CASE NO. CU-214
 AND NO. 3CZ-0416

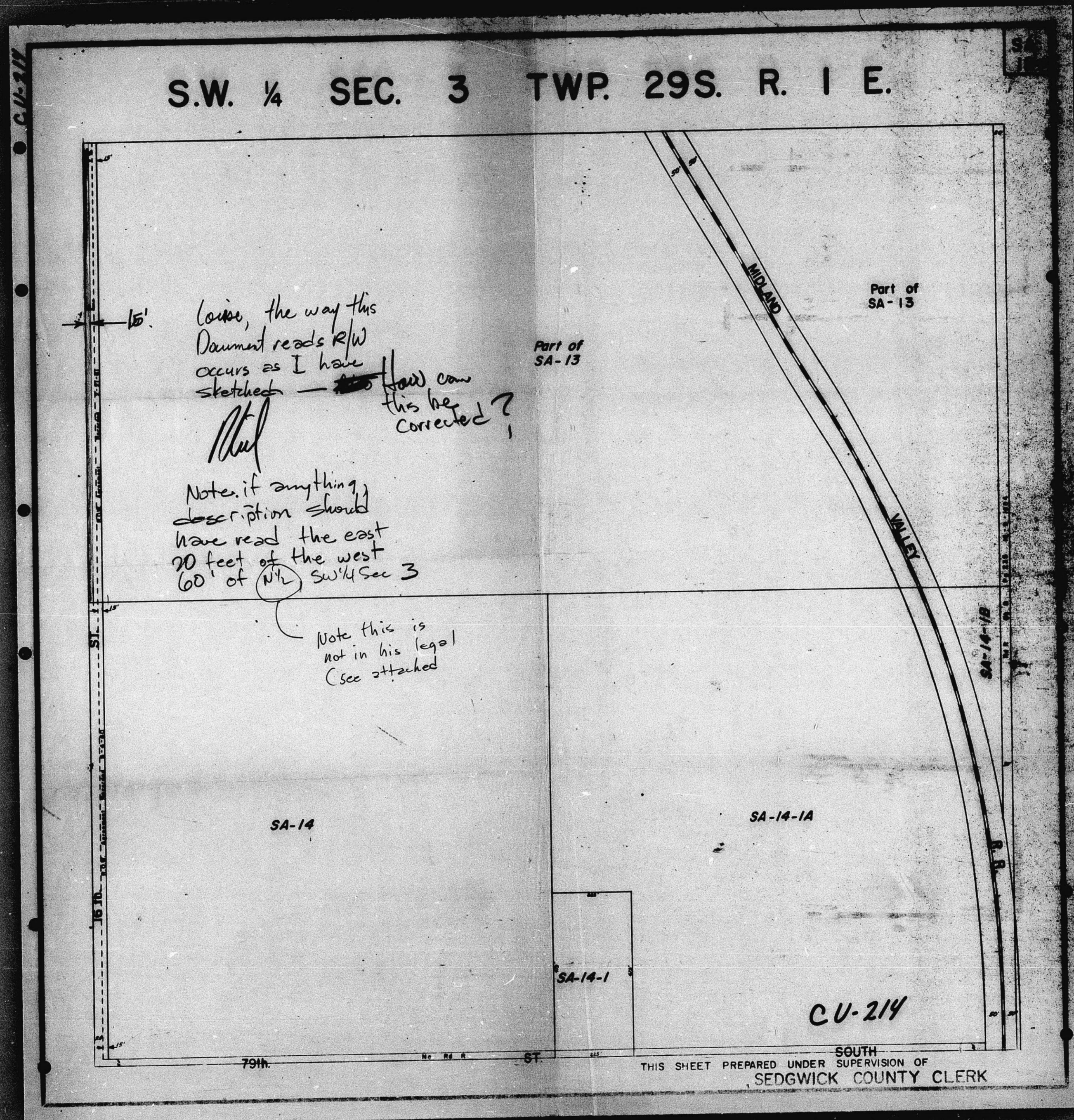
OPERATIONAL PLAN
 FOR
 SAND AND GRAVEL EXTRACTION
 AND
 READY-MIX CONCRETE PLANT

MDEHRING & ASSOCIATES
 WICHITA

CU-214

79th ST South

S.W. ¼ SEC. 3 TWP. 29S. R. 1 E.



15'
Cause, the way this
Daumont reads R/W
occurs as I have
sketched — ~~150~~ How can
this be
corrected?
Mud

Note, if anything,
description should
have read the east
90 feet of the west
60' of (N^{1/2}) SW ¼ Sec 3

Note this is
not in his legal
(see attached)

CU-214