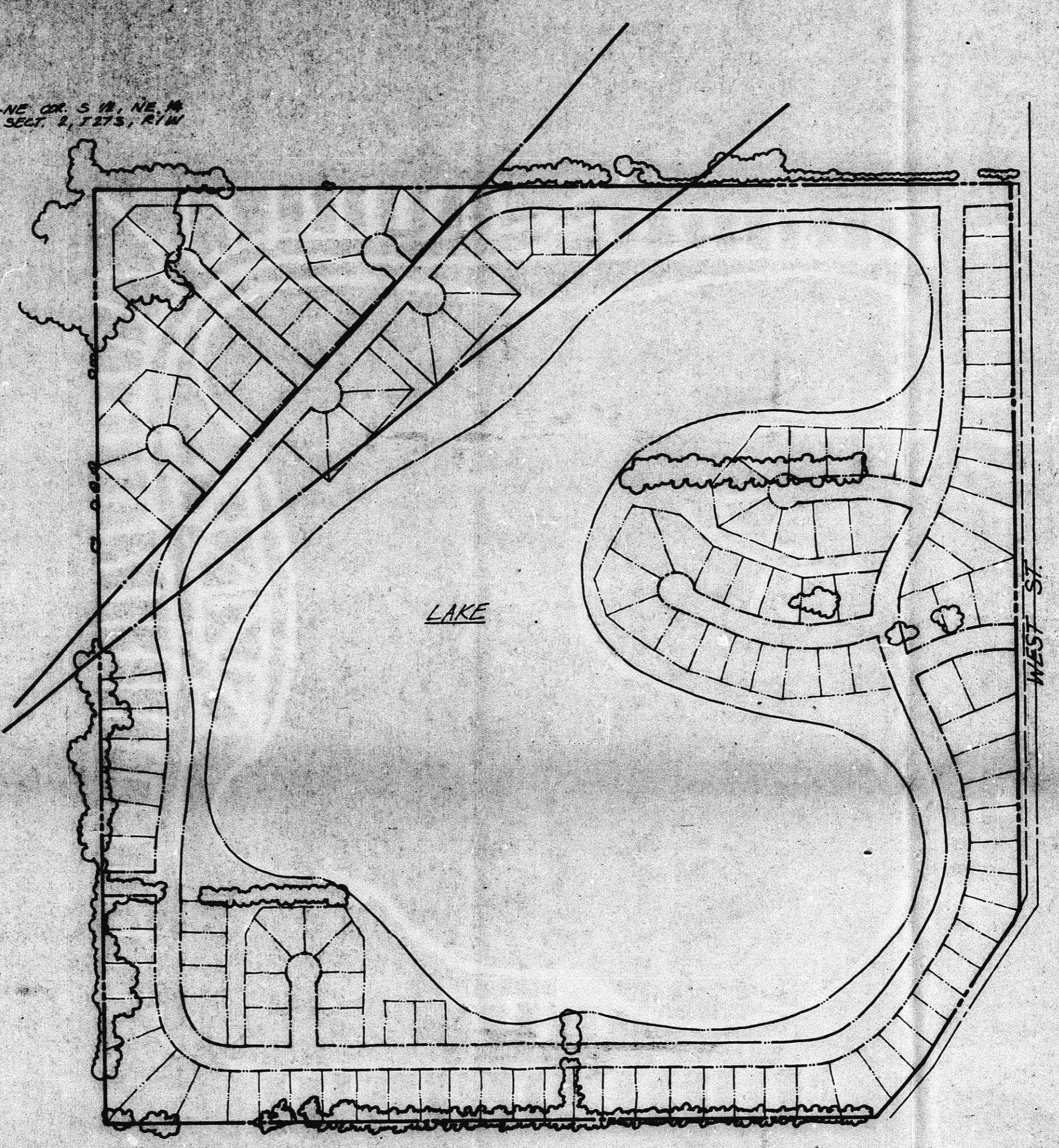


SAND PIT
OPERATIONAL PLAN



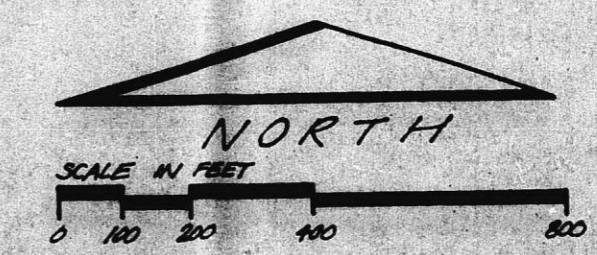
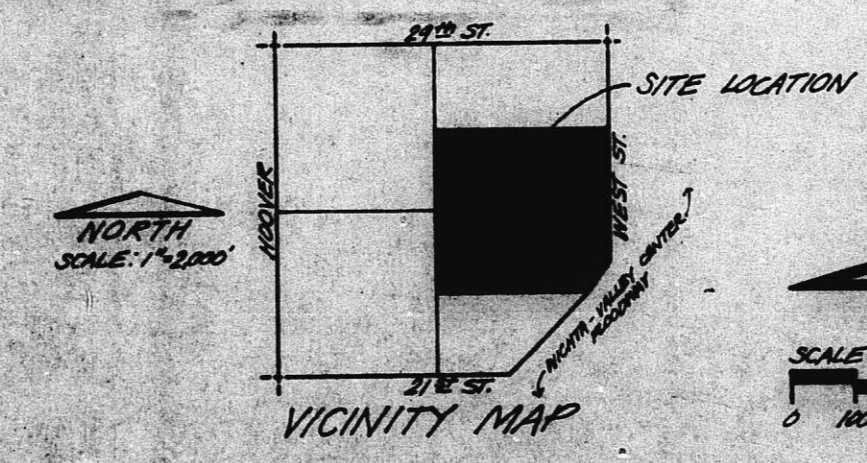
REDEVELOPMENT PLAN

CU-222

OFFICE COPY
DO NOT REMOVE

MID-KANSAS CONSTRUCTION COMPANY

PROPOSED SAND EXTRACTION OPERATION



Chlinger-Smith Corporation
S.M.K. J.D.G.
T.M.M. T.A.H.
P.L.B.S.

MID-KANSAS CONSTRUCTION COMPANY
1215 S. SANTA FE, WICHITA, KANSAS 67211
1947-1951