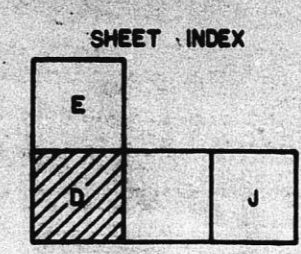
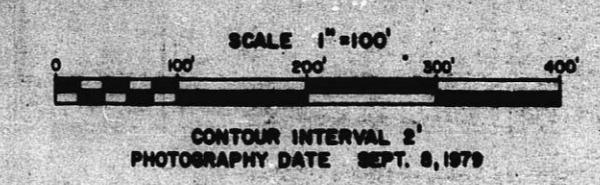


CU-226
 Approved Plan *[Signature]*
 7-77

Prepared by
 MILES AIR PHOTO SURVEY
 PHOTOGRAMMETRIC SERVICES
 OMAHA, KANSAS 68139
 (402) 462-3880 FILE NO. M-19-16

PREPARED FOR
 ALLIED LABORATORIES

TOPOGRAPHIC MAP OF LANDS LOCATED
 IN THE S.E. 1/4 OF SEC. 24
 T. 27 S. R. 2 W., SEDGWICK COUNTY, KANSAS



FILMED FROM THE BEST
 AVAILABLE COPY

MILWAUKEE AIR PHOTO SURVEY
1950-51
FILE NO. 10-1-50

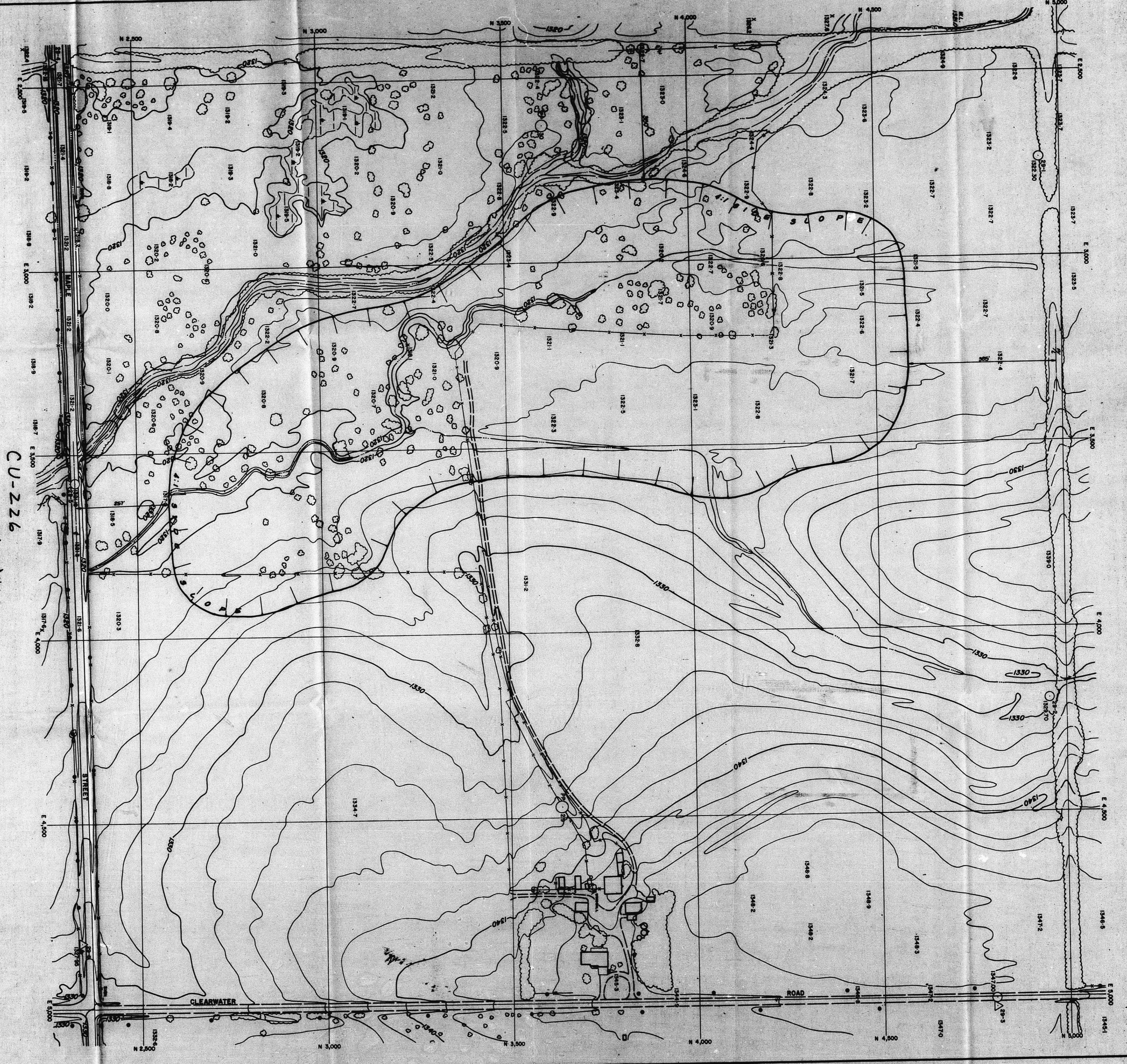
PREPARED FOR
ALLIED LABORATORIES

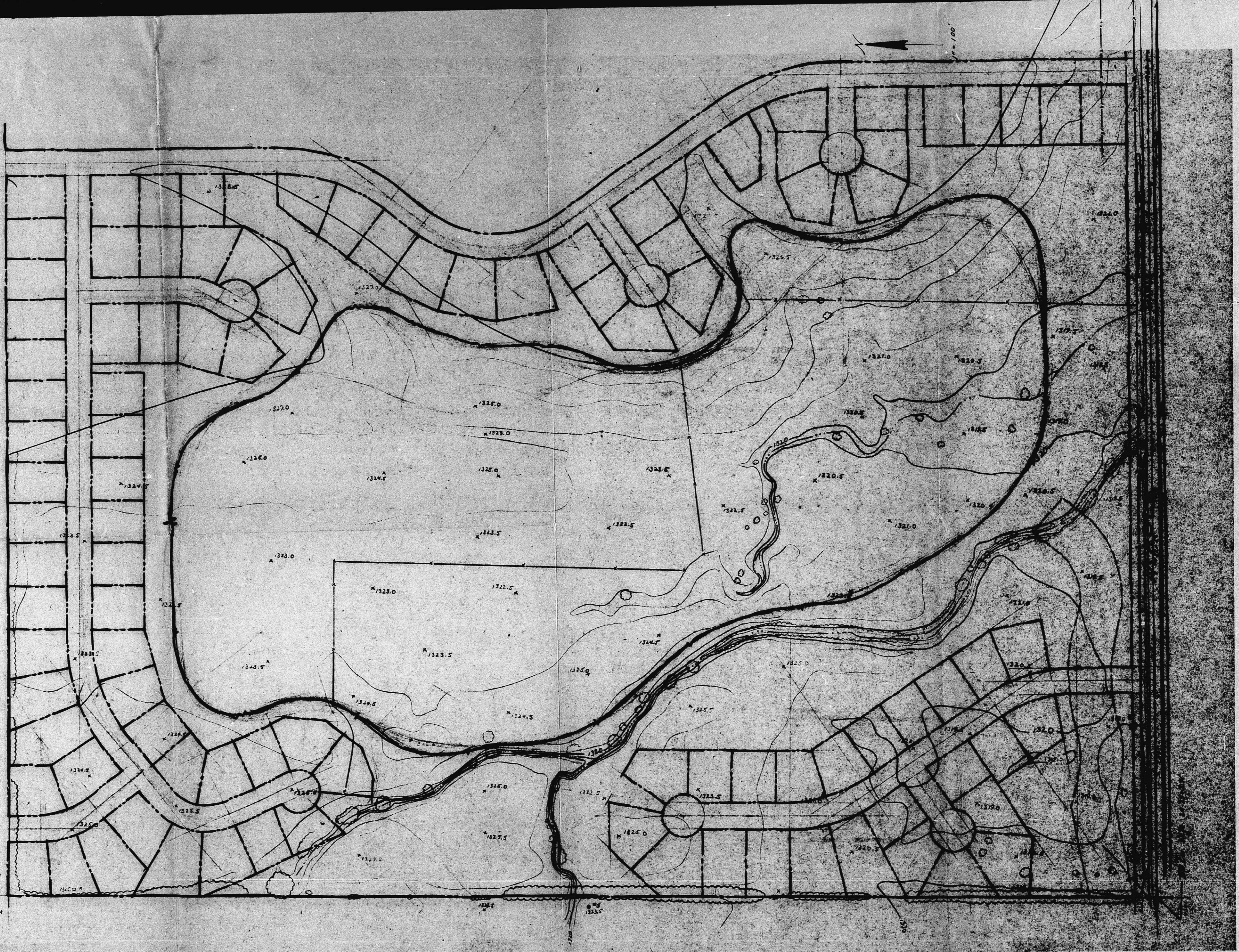
TOPOGRAPHIC MAP OF LANDS LOCATED
IN THE S.E. 1/4 OF SEC. 24
T. 27S. R. 2W., SEDWICK COUNTY, KANSAS

CU-226
Approved Olson 10/27/54

SCALE 1" = 100'
CONTOUR INTERVAL 5'
PHOTOGRAPHY DATE SEP. 4, 1950

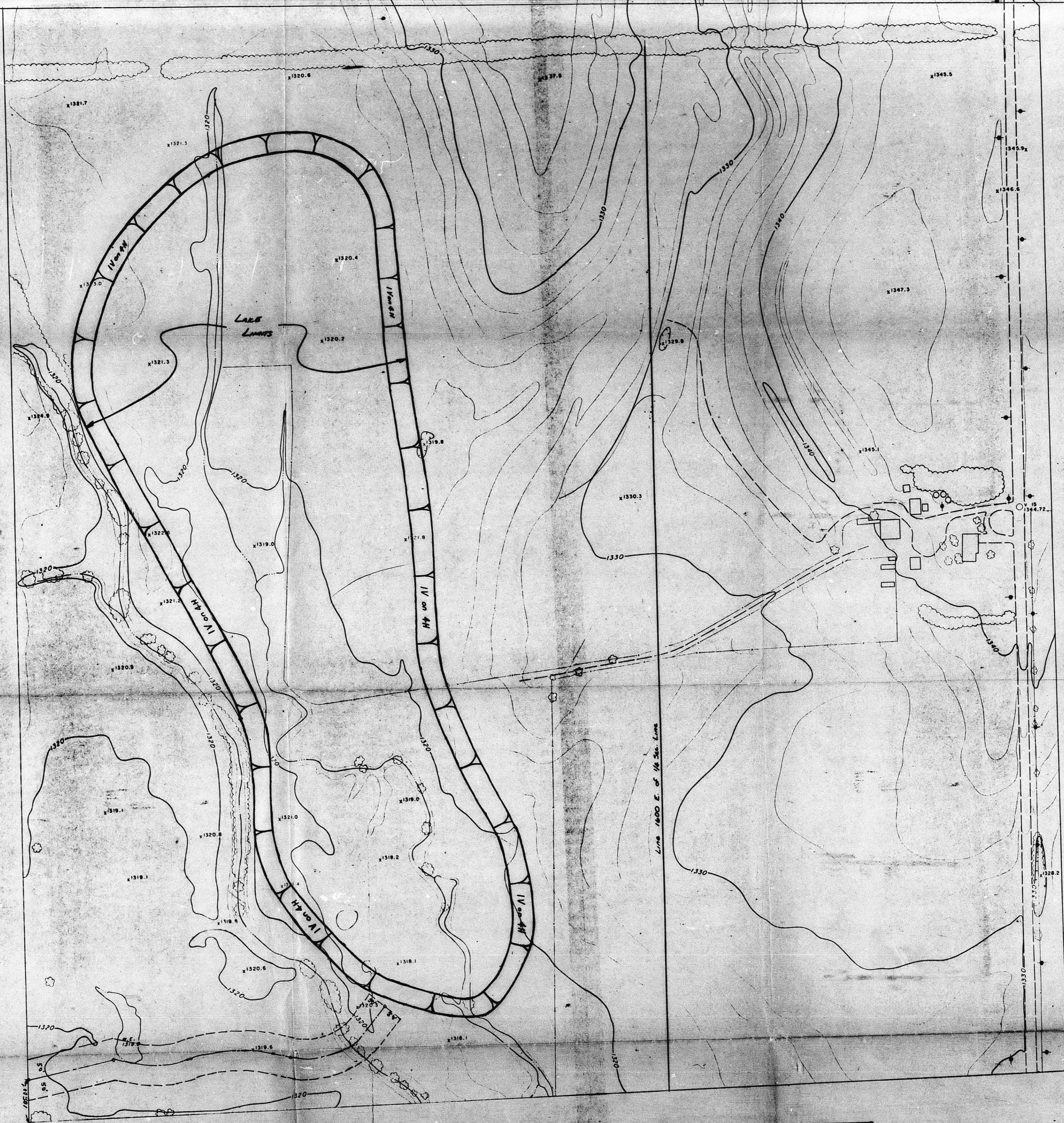
SHEET INDEX
E J





CU 226 from
CU-226
SITE PLAN

OFFICE COPY
DO NOT REMOVE



Compiled by Photogrammetric Methods
 aerial data service, Inc. - Tulsa, Oklahoma

BORROW Pt. FOR
 Proj. 16 (Bc) 54-87 K 038-3(54)
 S.E. 1/4 Sec. 24, T27S, R22W
 SEDWICK COUNTY

SCALE 1" = 100'
 CONTOUR INT. 2'
 PHOTOGRAPHY 4-17-79

ORIGINAL PLANS
 Surveyed 10-18-79

OFFICE COPY
 DO NOT REMOVE

CU-226

FILMED FROM THE BEST
 AVAILABLE COPY