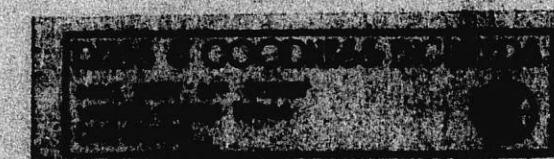


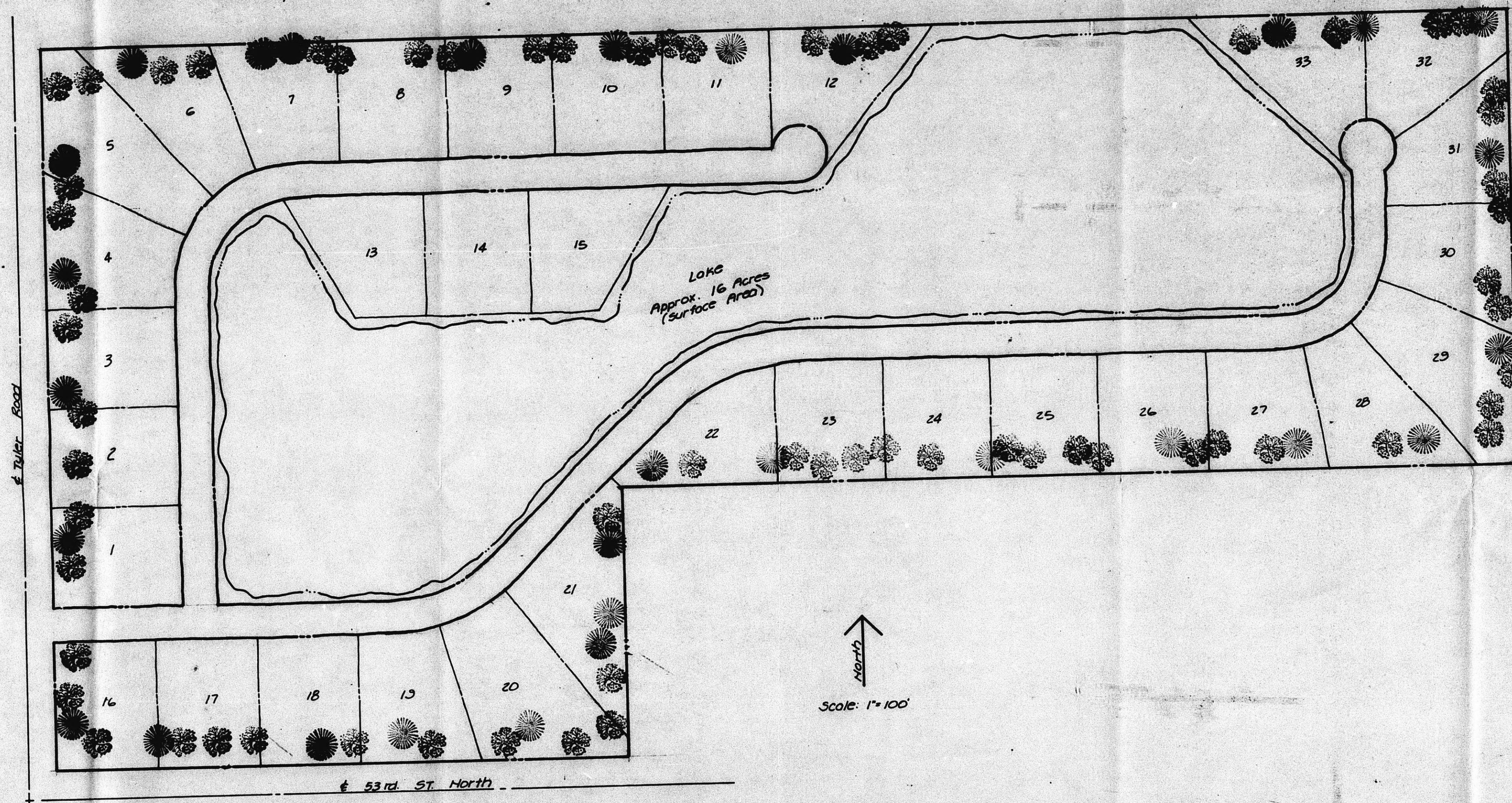
**OPERATIONAL PLAN**

L.A. Knebler Property

1-29-82

CU-252



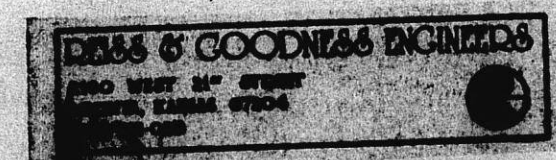


35 Lots - 40,000 s.f. Minimum

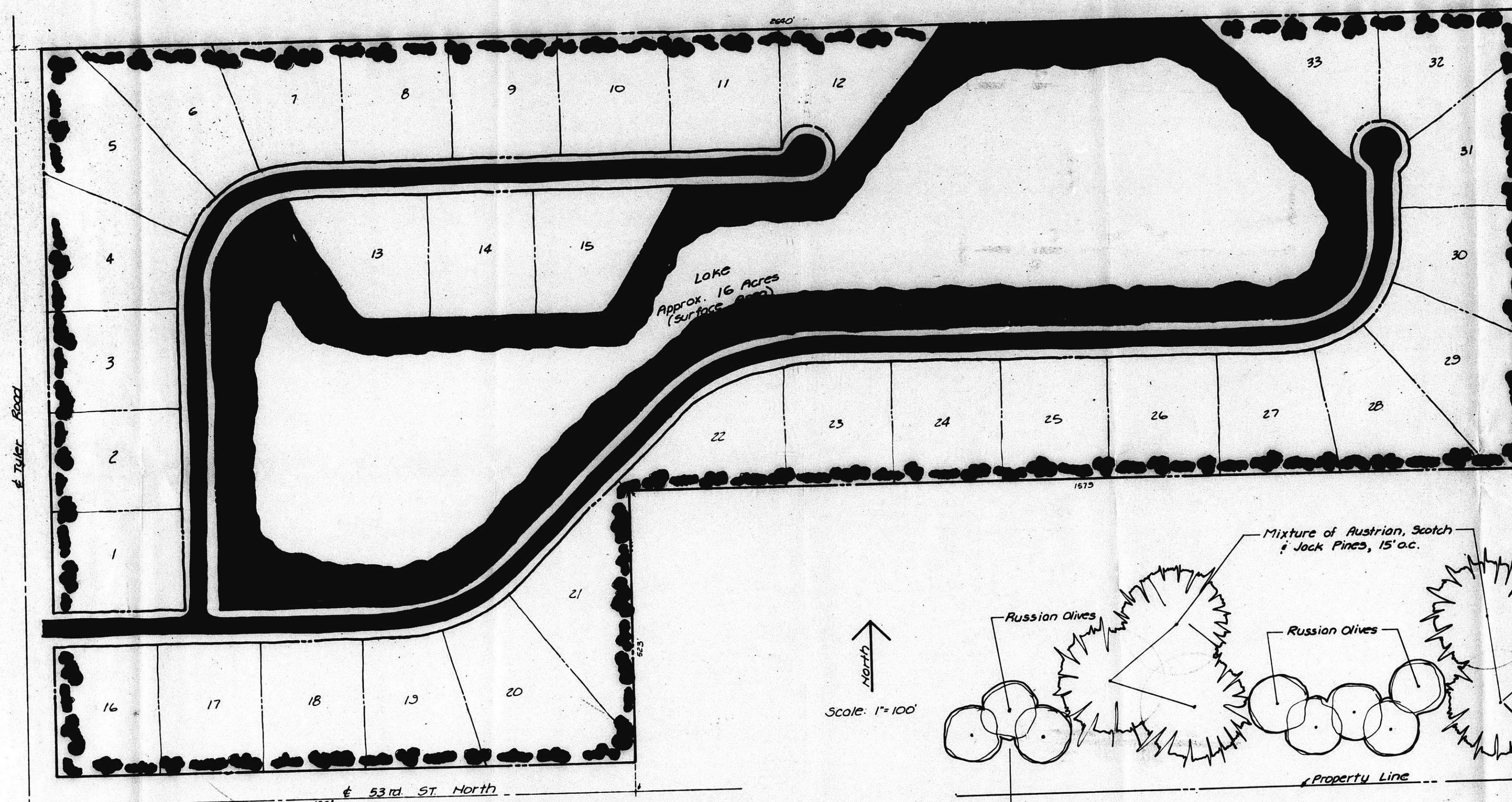
**REDEVELOPMENT PLAN**

L. A. Knebler Property

1-29-82



CU-252



S.W. Cor. SW 1/4  
Sec. 16 - T26S - R1W

**LANDSCAPE PLAN**

For Property Owned by Cranmer Grass Farms Inc.  
Leasee - L.A. Anebier Construction Co. Inc.

**REISS & GOODNESS ENGINEERS**  
2180 WEST 31<sup>ST</sup> AVENUE  
WICHITA, KANSAS 67204  
(316) 262-0223

4-14-82

**NOTE:**  
This Landscape Plan is part of Conditional Use Case No. 252 and must be approved by the Wichita-Sedgewick Co. Metropolitan Area Planning Department prior to the publication of the resolution effectuating the Conditional Use Permit for a Sand Extraction Operation.

CU-252