

REDEVELOPMENT PLAN

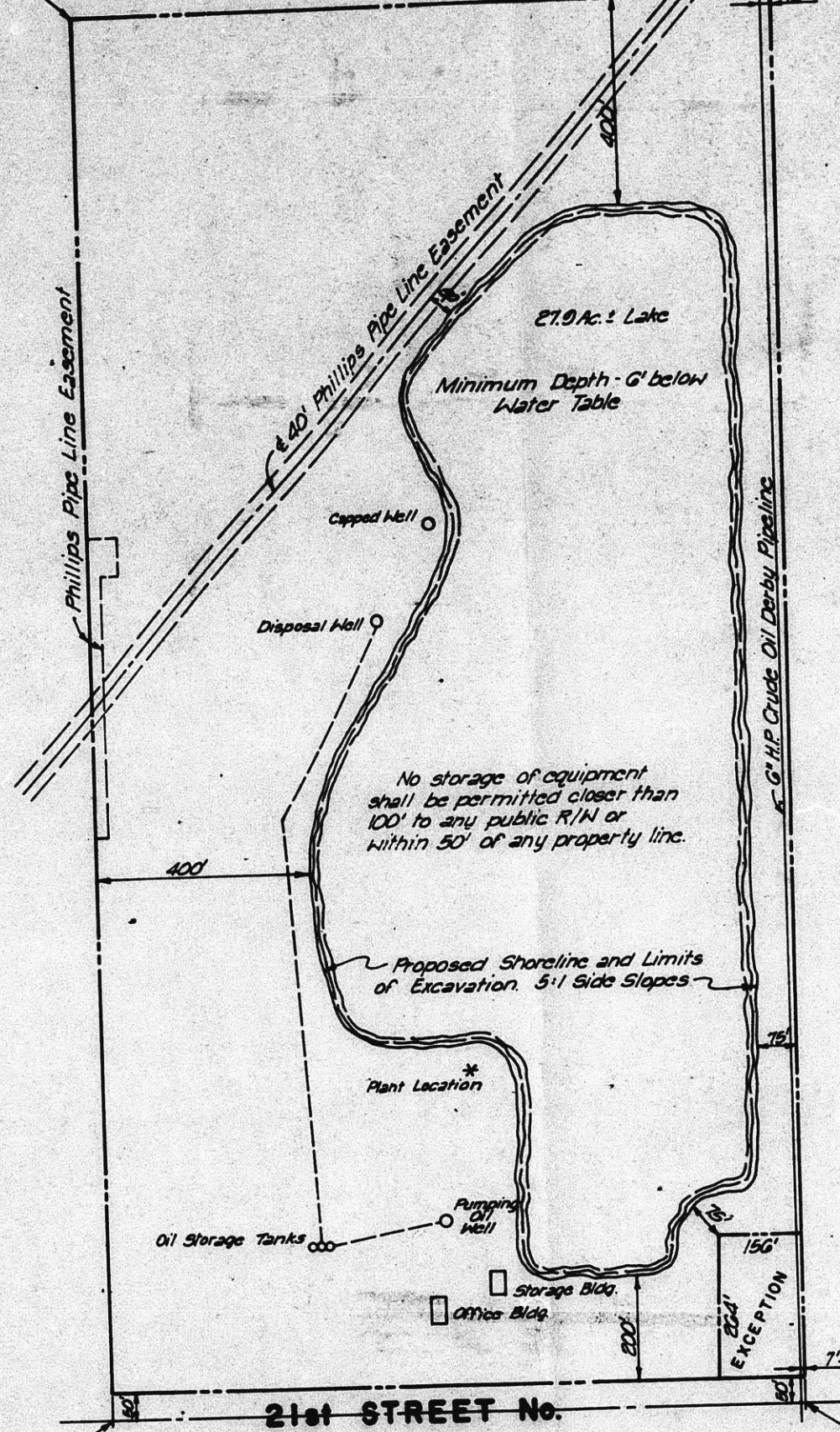
OFFICE COPY
DO NOT REMOVE

CU-258

Bdy Co Com 6-22-53
Approved as to condition.

NW Cor. E 1/4, SW 1/4, Sec. 8,
T21S, R14W of the 6th PM

NE Cor. E 1/4, SW 1/4, Sec. 8,
T21S, R14W of the 6th PM



OPERATIONAL PLAN

SCALE IN FEET
0 200 400 600
October 5, 1952

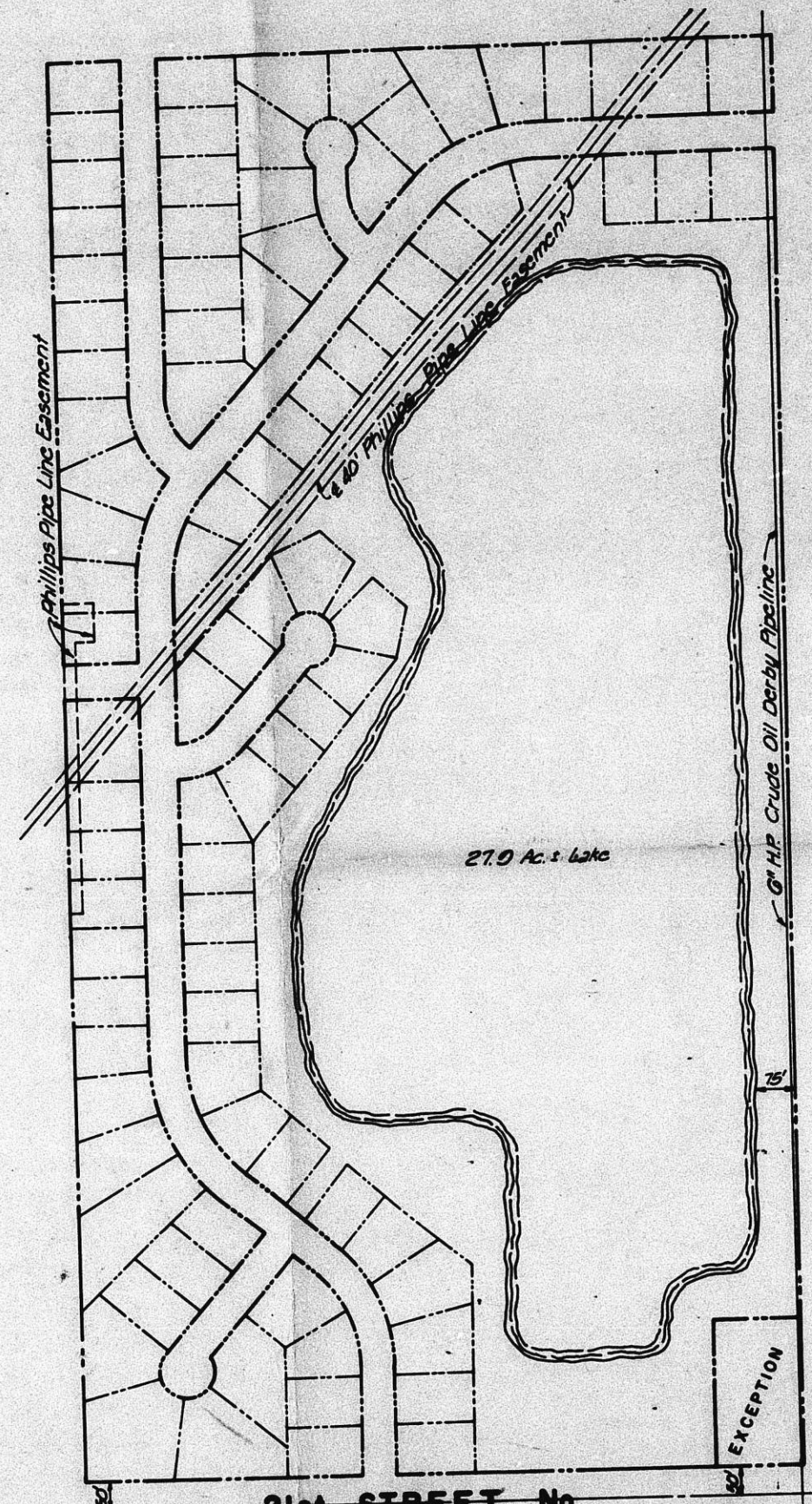
SW Cor. E 1/4, SW 1/4, Sec. 8,
T21S, R14W of the 6th PM

SE Cor. E 1/4, SW 1/4, Sec. 8,
T21S, R14W of the 6th PM

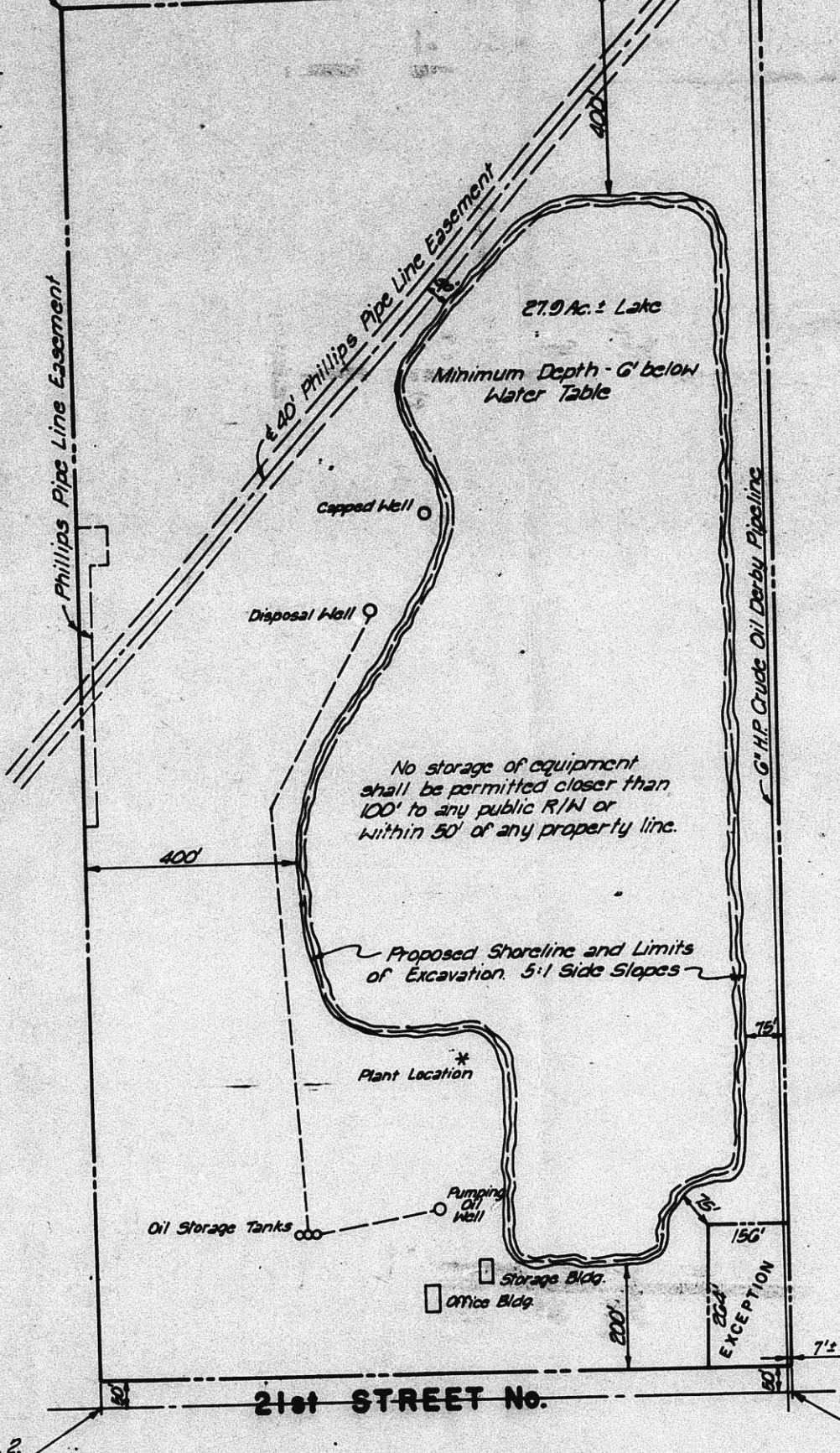
FOUNDATION, INC.

BIG RIVER SAND (SUBSIDIARY)

CONDITIONAL USE
(C.U. 133 AMENDED)



REDEVELOPMENT PLAN



OPERATIONAL PLAN

SCALE IN FEET
October 8, 1982

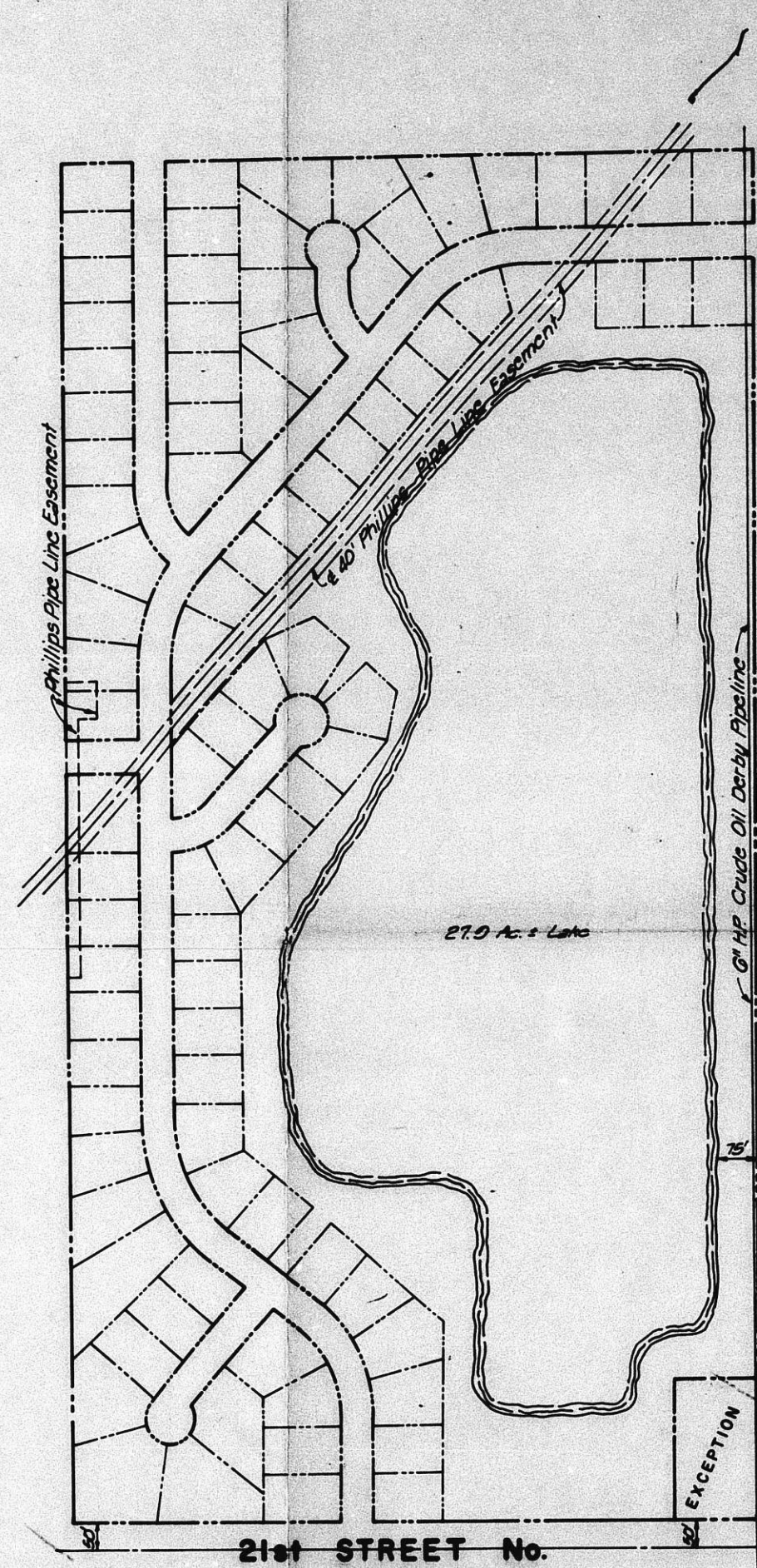
Superseded by CU-274

OFFICE COPY
DO NOT REMOVE

CU-258

*Bd of Co Com 6-27-83
Approval out to condition*

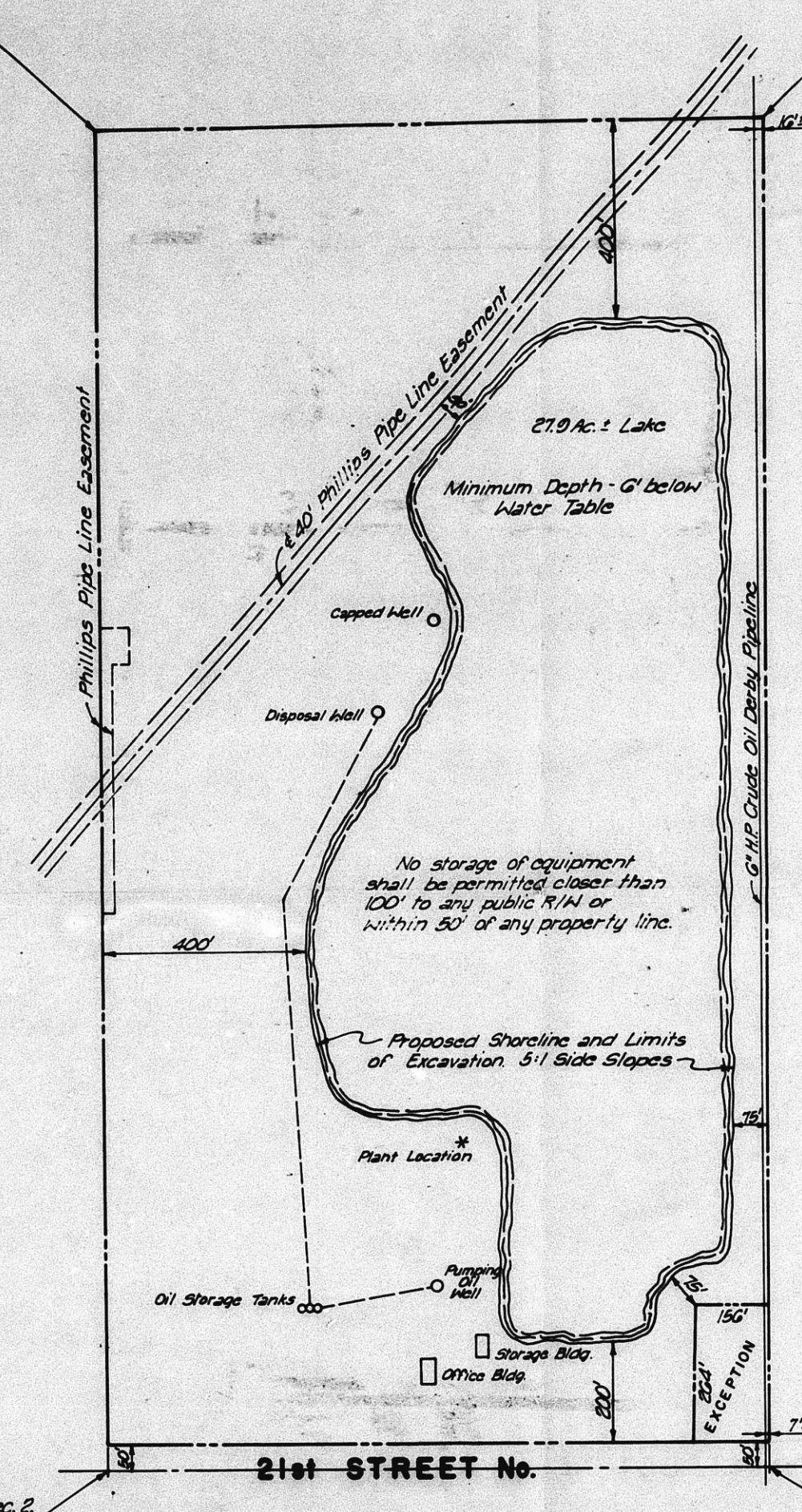
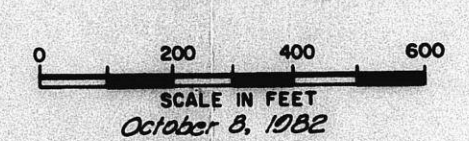
FOUNDATION, INC.
BIG RIVER SAND (SUBSIDIARY)
CONDITIONAL USE
(C.U. 133 AMENDED)



REDEVELOPMENT PLAN

N.W. Cor. E. 1/4, S. 1/4, Sec. 8, T. 27 S., R. 12 W. of the 6th P.M.

N.E. Cor. E. 1/4, S. 1/4, Sec. 8, T. 27 S., R. 12 W. of the 6th P.M.



OPERATIONAL PLAN

S.W. Cor. E. 1/4, S. 1/4, Sec. 8, T. 27 S., R. 12 W. of the 6th P.M.

S.E. Cor. E. 1/4, S. 1/4, Sec. 8, T. 27 S., R. 12 W. of the 6th P.M.

Revised by CU-258

CU-258
 Bd of Com 6-22-83
 Approval subject to conditions.
JKA

FOUNDATION, INC.
BIG RIVER SAND (SUBSIDIARY)
 CONDITIONAL USE
 (C.U. 133 AMENDED)