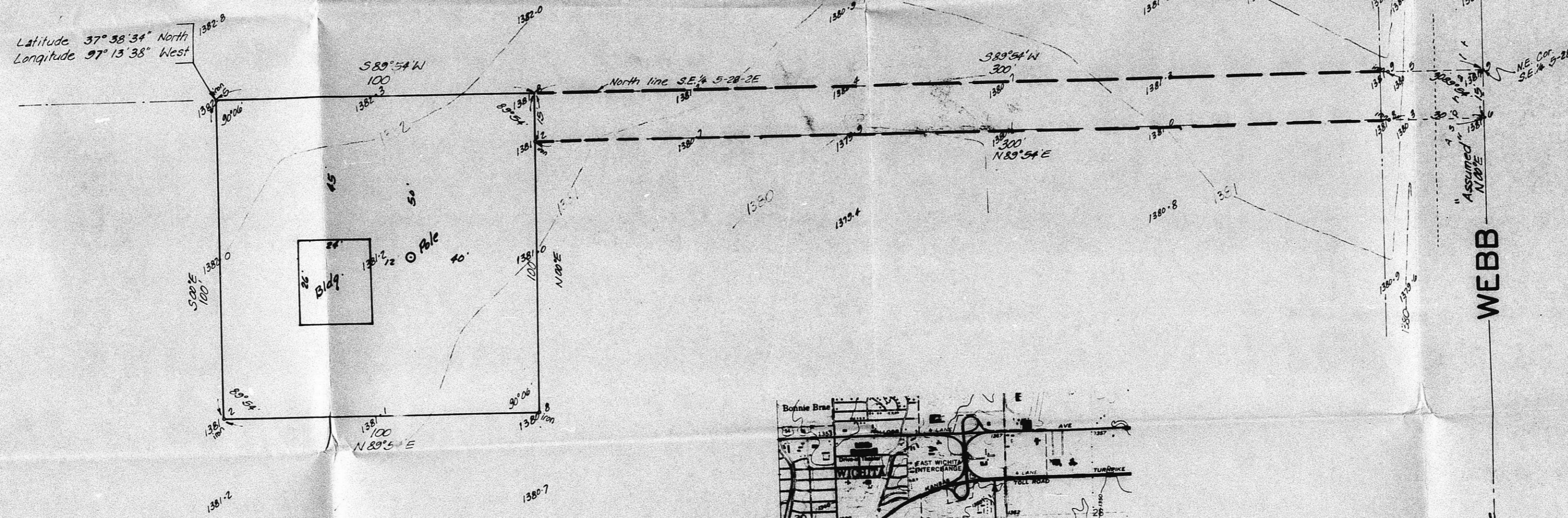


Latitude 37° 38' 36" North
Longitude 97° 13' 35" West



TO ALL PARTIES INTERESTED IN THE TITLE TO THE PREMISES SURVEYED:
Chicago Title Insurance Company
Advanced Mobile Phone Service, Inc.

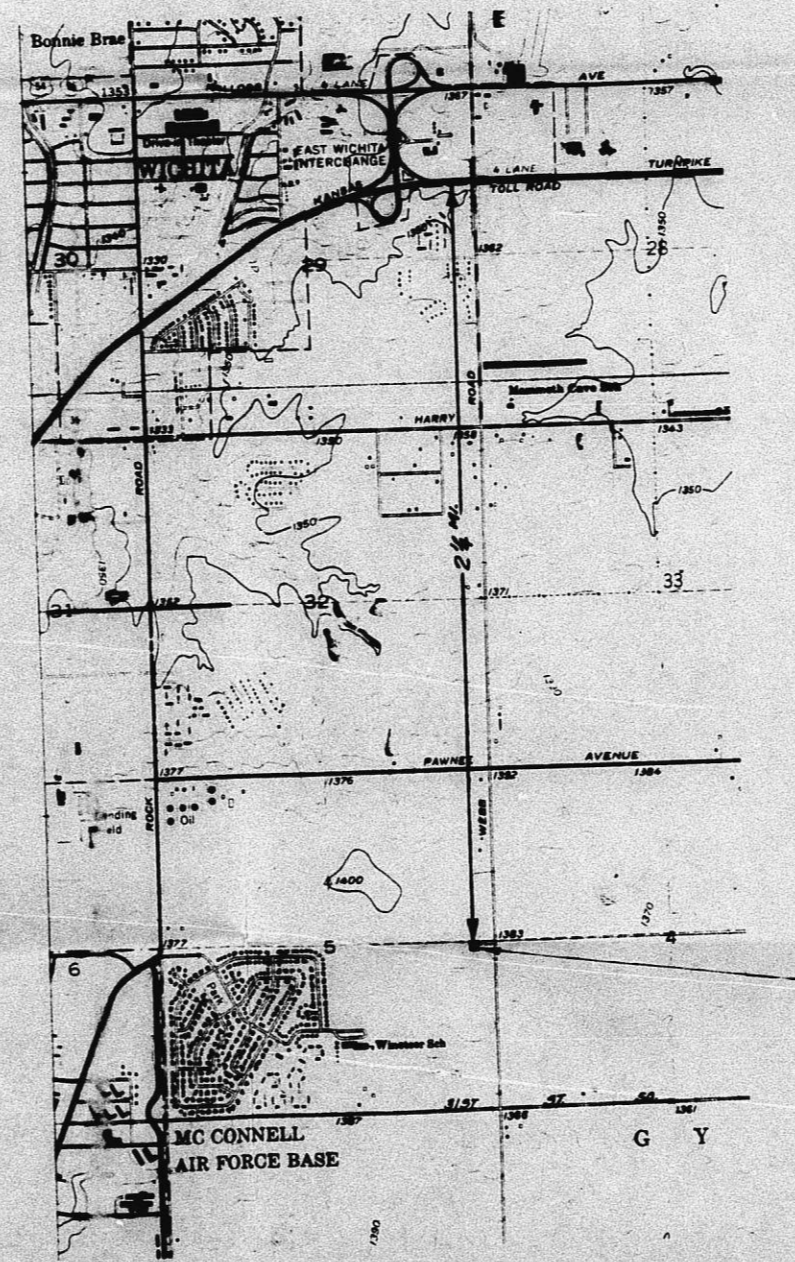
State of Kansas) ss January 4, 1993
County of Sedwick)

We, Baughman Company, P.A., Surveyors in aforesaid county and state do hereby certify that we did on this 4th day of January, 1993, survey a tract in the SE4 of Sec. 5, Twp. 28-S, R-2-E of the 6th P.M., Sedwick County, Kansas, described as commencing at the W.E. Corner of said SE4; thence west along the north line of said SE4, 300 feet for a place of beginning; thence continuing west along the north line of said SE4, 100 feet; thence south parallel with the east line of said SE4, 100 feet; thence east parallel with the north line of said SE4, 100 feet; thence north parallel with the east line of said SE4, 100 feet to the place of beginning, together with an ingress and egress easement described as beginning at the W.E. Corner of said SE4; thence east along the north line of said SE4, 300 feet; thence south parallel with the east line of said SE4, 15 feet; thence east parallel with the north line of said SE4, 300 feet to the east line of said SE4; thence north 15 feet to the place of beginning.

The accompanying plat is a true and correct exhibit of said survey.



William L. Forbes
Surveyor



Vicinity Plat
1" = 200'

Kansas Gas & Electric Co.
120' E. 101' S.
Wichita, Kansas
69 KV Transmission line
12 KV distribution line
3 phase, 4 wire

Bench mark:
Railroad spike in east
side of power pole
Elev. = 1384.60 City Datum =
Elev. = 1384.60 M.S.L.

RD.
WEBB

Scale 1" = 20'
North Direction
Reference to U.S.G.S.
7.5' Quad 109
Projected UTM 13TD & 13TE

CU-272

Architect	Consultant	
Project ADVANCED MOBILE PHONE SERVICE		
Drawing	Scale	
Approved by	AMPS Location Number	Date
AMPS Director of Operations	AMPS Job Number	Drawing Number
AMPS General Manager - Construction		

BAUGHMAN COMPANY, P.A.
SURVEYING & ENGINEERING
316.262-7271 • 330 LAURA • WICHITA, KANSAS 67211