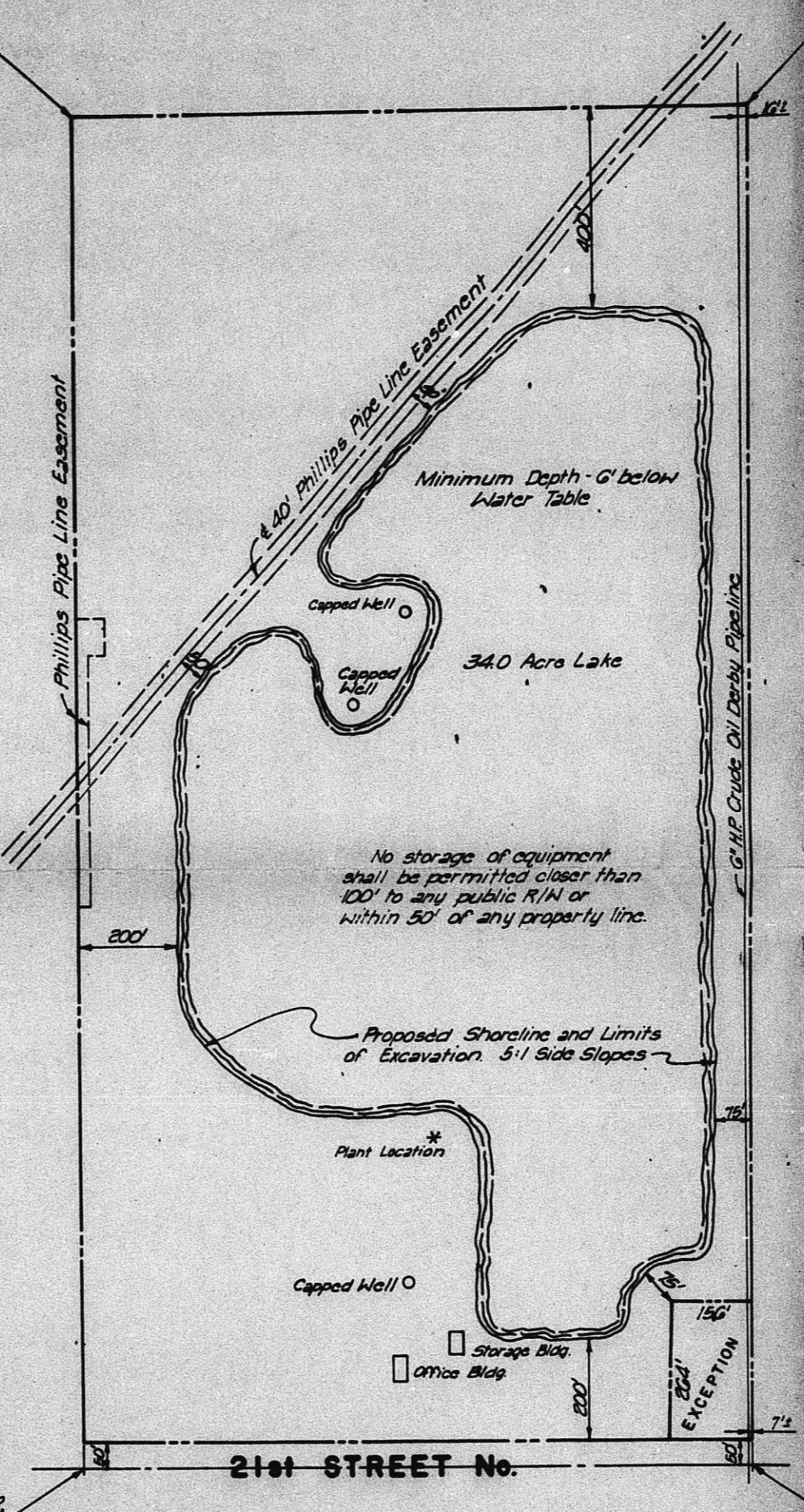


REDEVELOPMENT PLAN

SW Cor. E 1/4, S 1/4, Sec. 2,  
T 21 S, R 14 W of the 6th PM

NE Cor. E 1/4, S 1/4, Sec. 2,  
T 21 S, R 14 W of the 6th PM



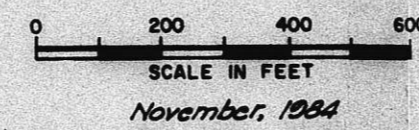
OPERATIONAL PLAN

CU-274  
BCC approved 1-9-85  
see Resolution # 2-1185

FOUNDATION, INC.

**BIG RIVER SAND** (SUBSIDIARY)

CONDITIONAL USE  
(C.U. 258 AMENDED)



SCALE IN FEET

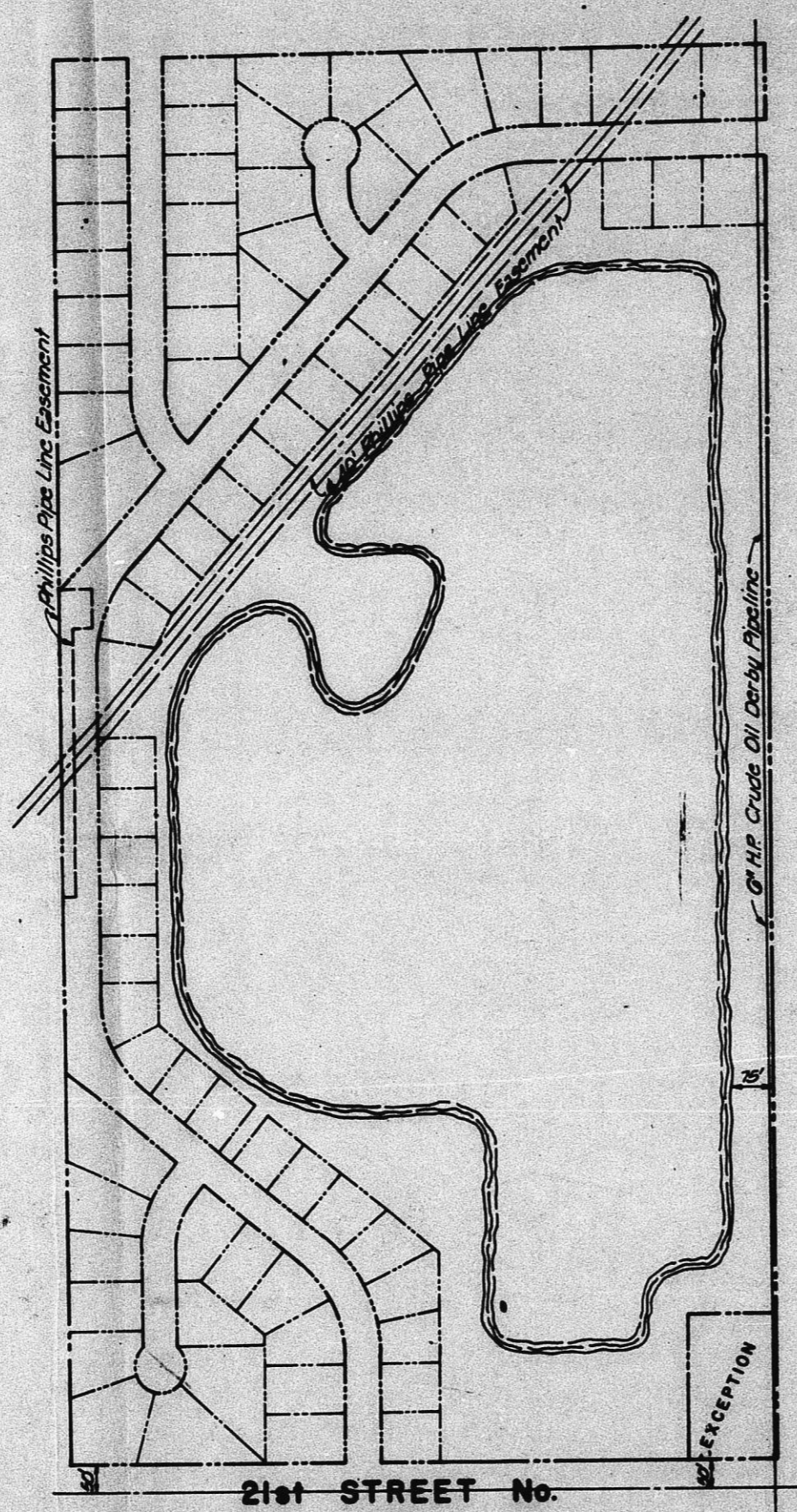
November, 1984

SW Cor. E 1/4, S 1/4, Sec. 2,  
T 21 S, R 14 W of the 6th PM

NE Cor. E 1/4, S 1/4, Sec. 2,  
T 21 S, R 14 W of the 6th PM

NAPD copy 1002

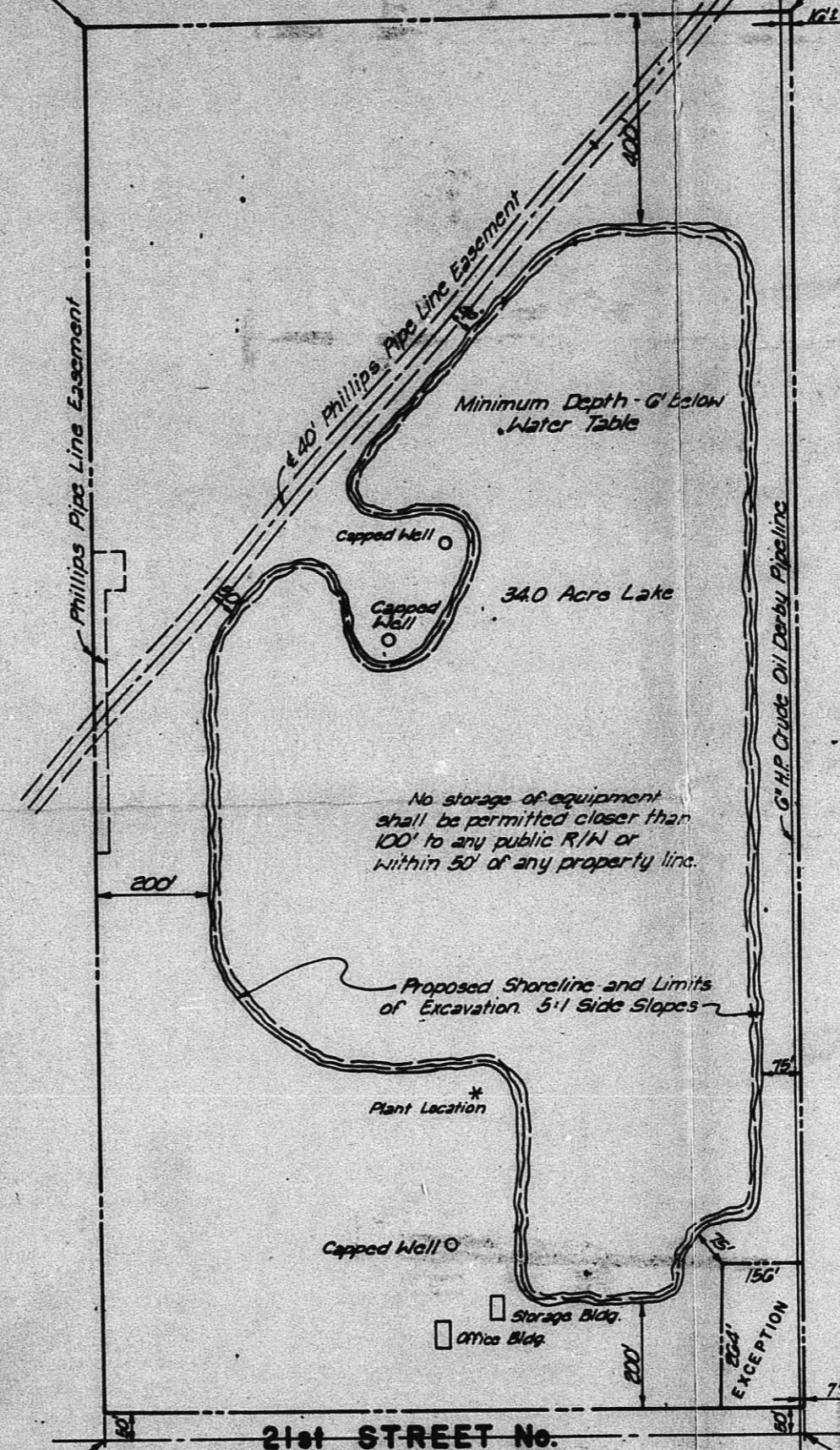
FILMED FROM THE BEST AVAILABLE COPY .....



REDEVELOPMENT PLAN

NW Cor. E 1/4, S 1/4, Sec. 2,  
T21S, R11W of the 6th PM

NE Cor. E 1/4, S 1/4, Sec. 2,  
T21S, R11W of the 6th PM



OPERATIONAL PLAN

SCALE IN FEET  
0 200 400 600  
November, 1964

SW Cor. E 1/4, S 1/4, Sec. 2,  
T21S, R11W of the 6th PM

SE Cor. E 1/4, S 1/4, Sec. 2,  
T21S, R11W of the 6th PM

*see W-292*

CU-274  
BCAC approved 11-9-85  
see Resolution R#2-1985

FOUNDATION, INC.  
**BIG RIVER SAND** (SUBSIDIARY)  
CONDITIONAL USE  
(C.U. 228 AMENDED)

MAPD copy 2 of 2

FILMED FROM THE BEST AVAILABLE COPY