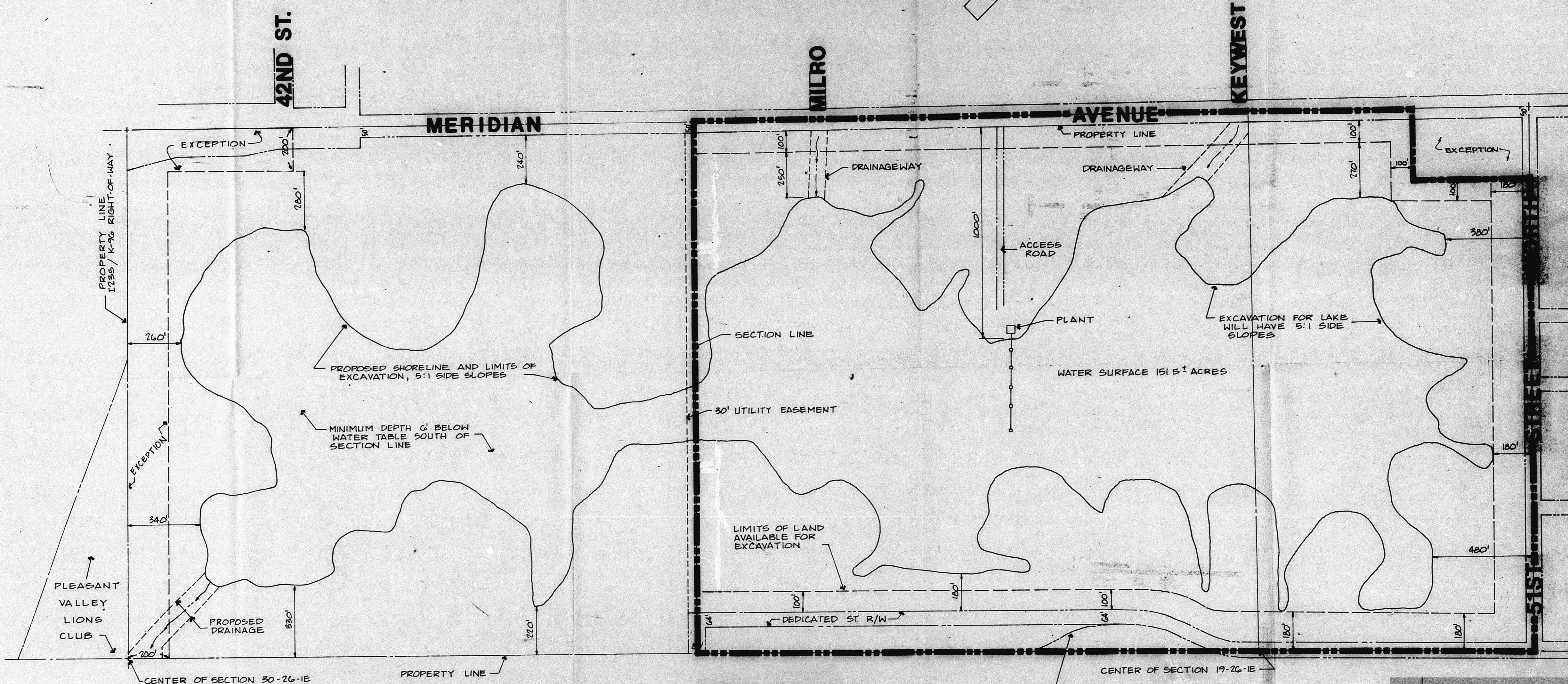


NORTH

S.A.F. 1" = 200'



OPERATIONAL PLAN  
(REVISED)

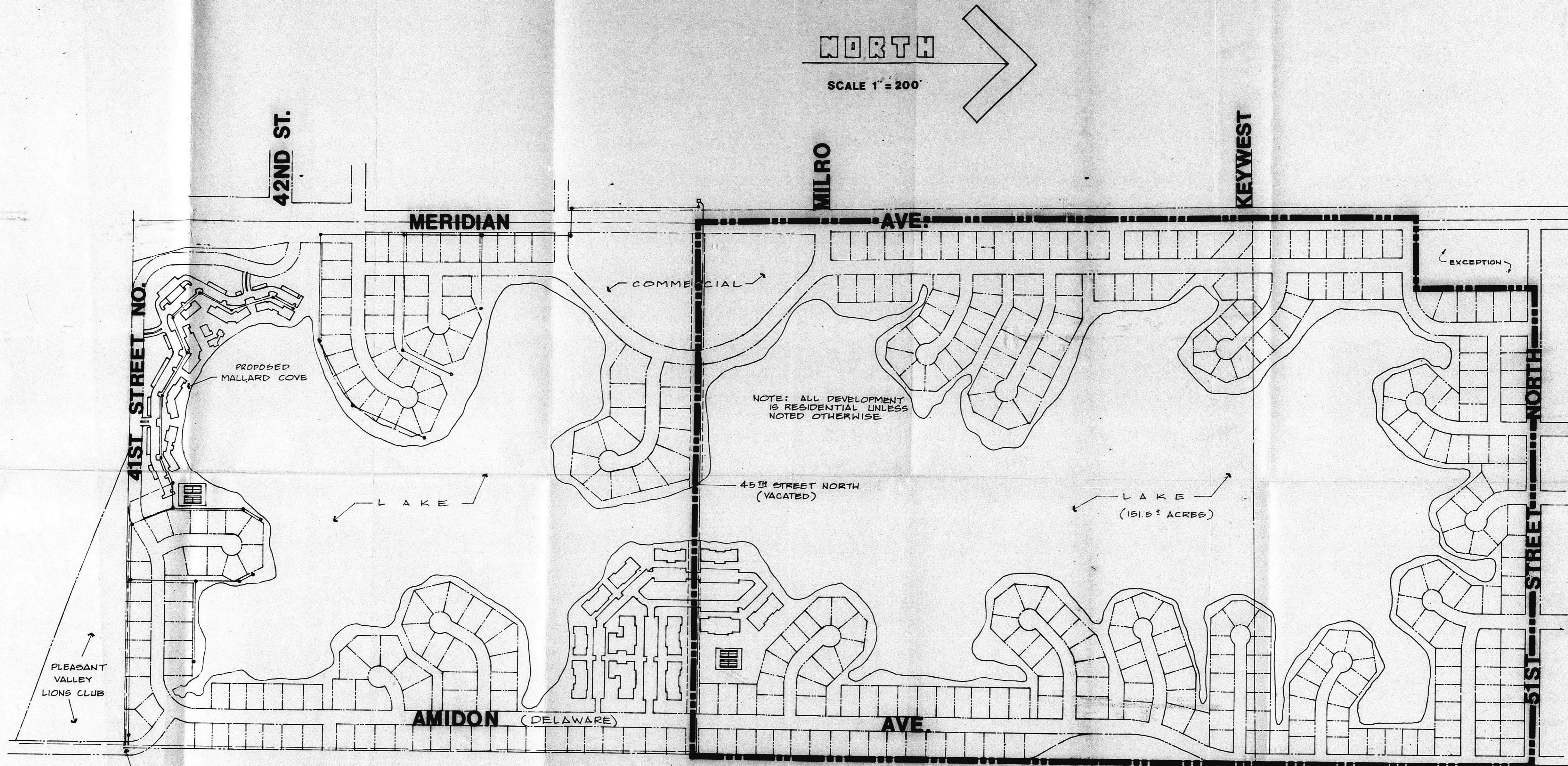
MILES SAND INC.

NOVEMBER 15, 1984

CV-275

4 sets of CV-275 plans  
as submitted to B.G.C.  
Note: 100' setback along  
section line has been  
agreed out.  
Note: base of land  
is 100' wide

FILMED FROM THE BEST  
AVAILABLE COPY.....



NORTH  
SCALE 1" = 200'

REDEVELOPMENT PLAN  
(REVISED)

MILES SAND INC.

NOVEMBER 15, 1984

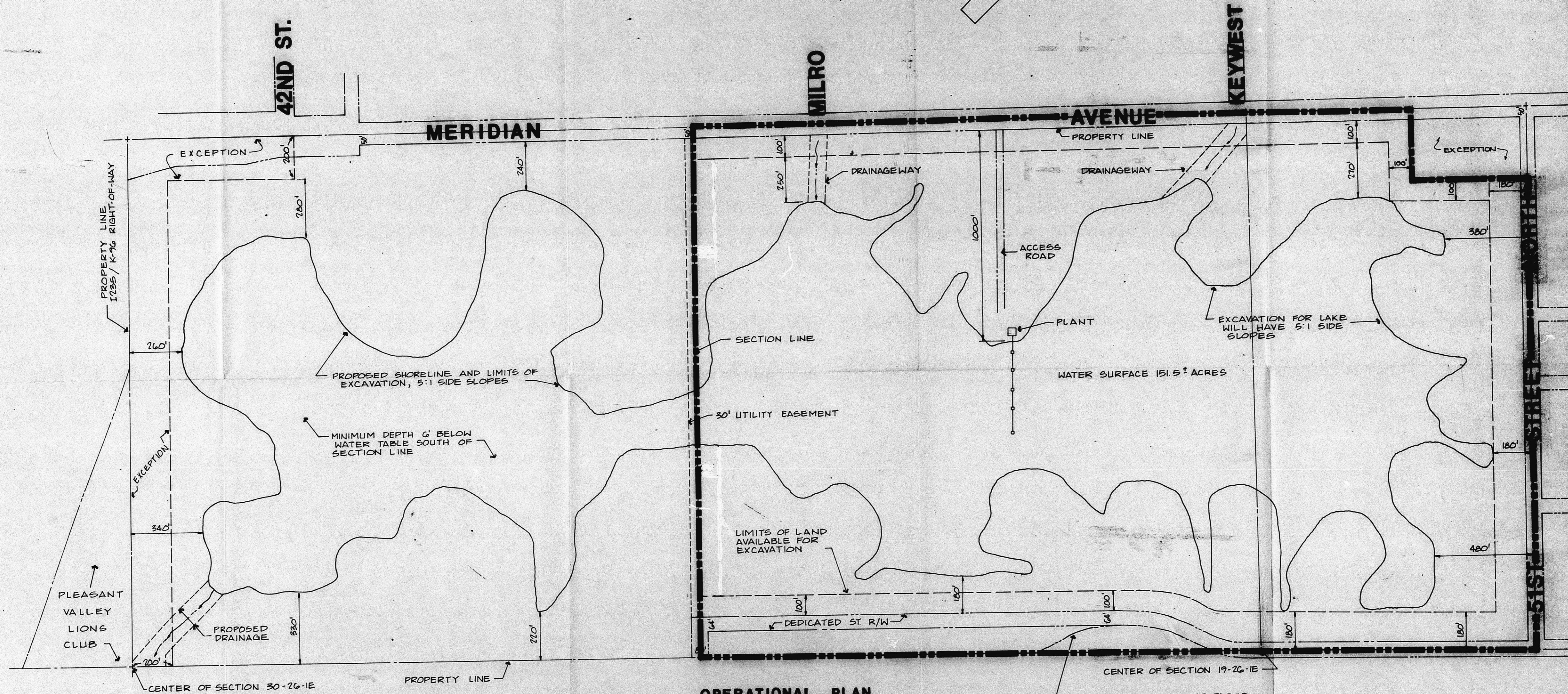
CU-275

REVISED 1-16-85

FILMED FROM THE BEST  
AVAILABLE COPY

NORTH

S. A F 1" = 200'



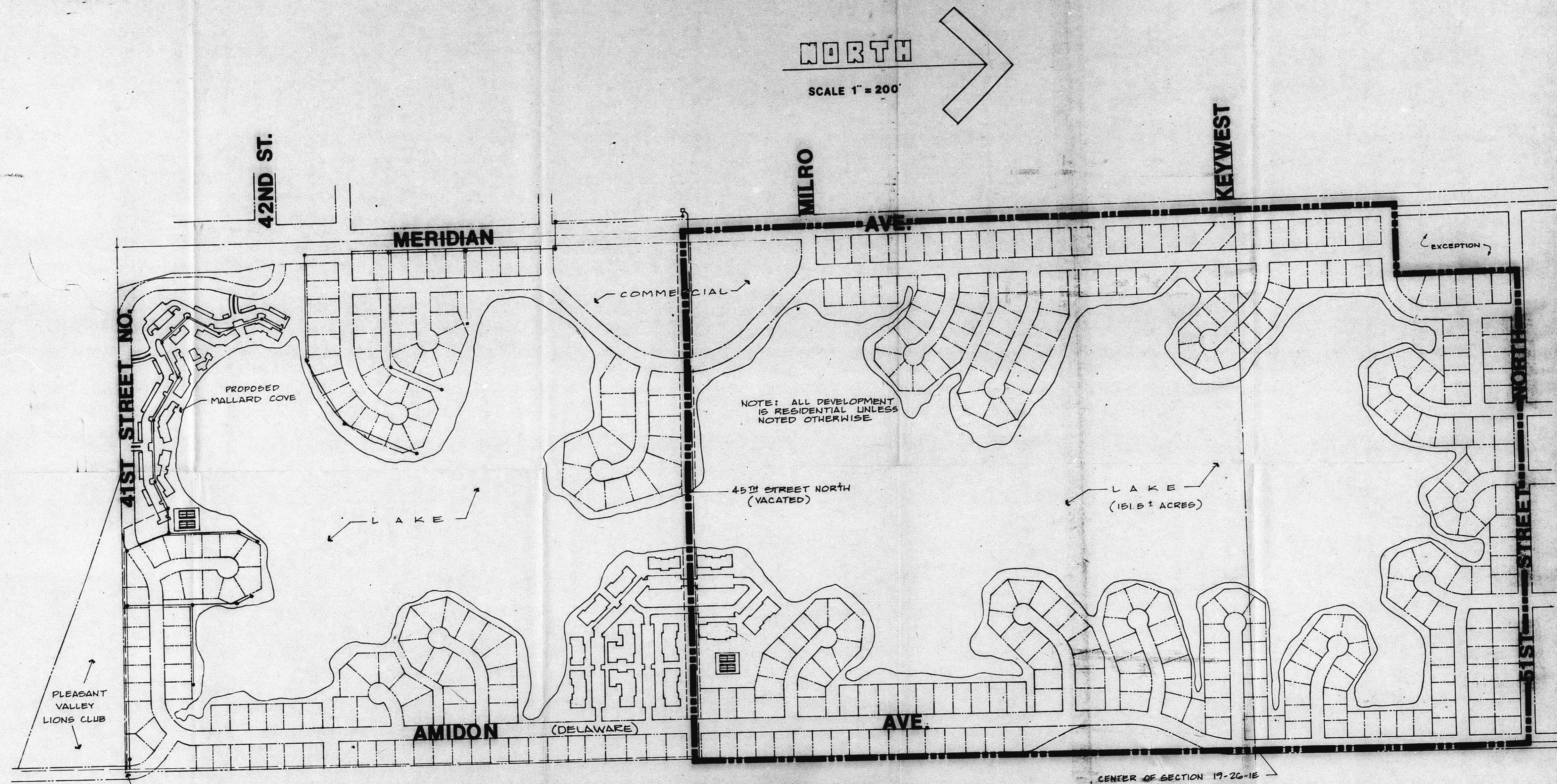
OPERATIONAL PLAN  
(REVISED)

MILES SAND INC.

NOVEMBER 15, 1984

CU-275

FILMED FROM THE BEST  
AVAILABLE COPY



NORTH

SCALE 1" = 200'

REDEVELOPMENT PLAN  
(REVISED)

MILES SAND INC.

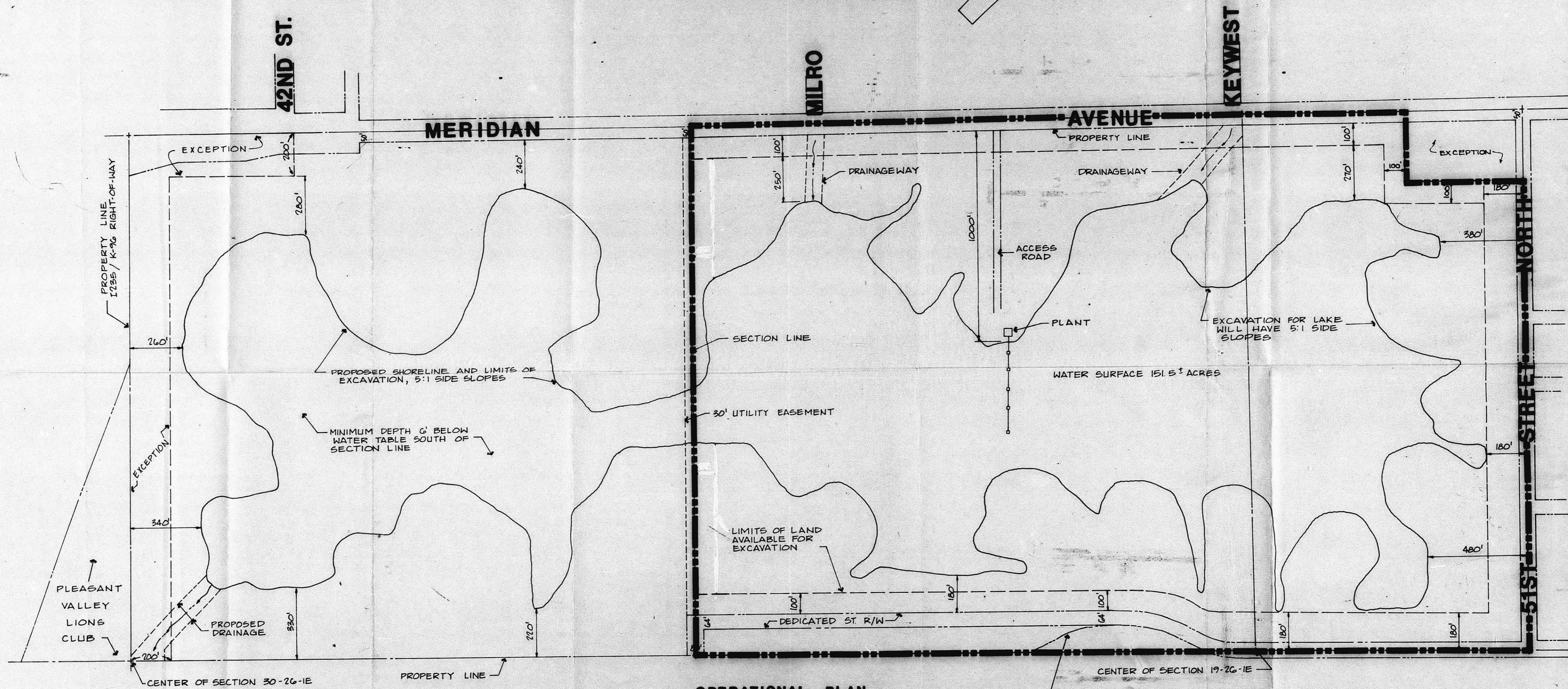
NOVEMBER 15, 1984

CU-275

FILMED FROM THE BEST  
AVAILABLE COPY

NORTH

SCALE 1" = 200'



OPERATIONAL PLAN (REVISED)

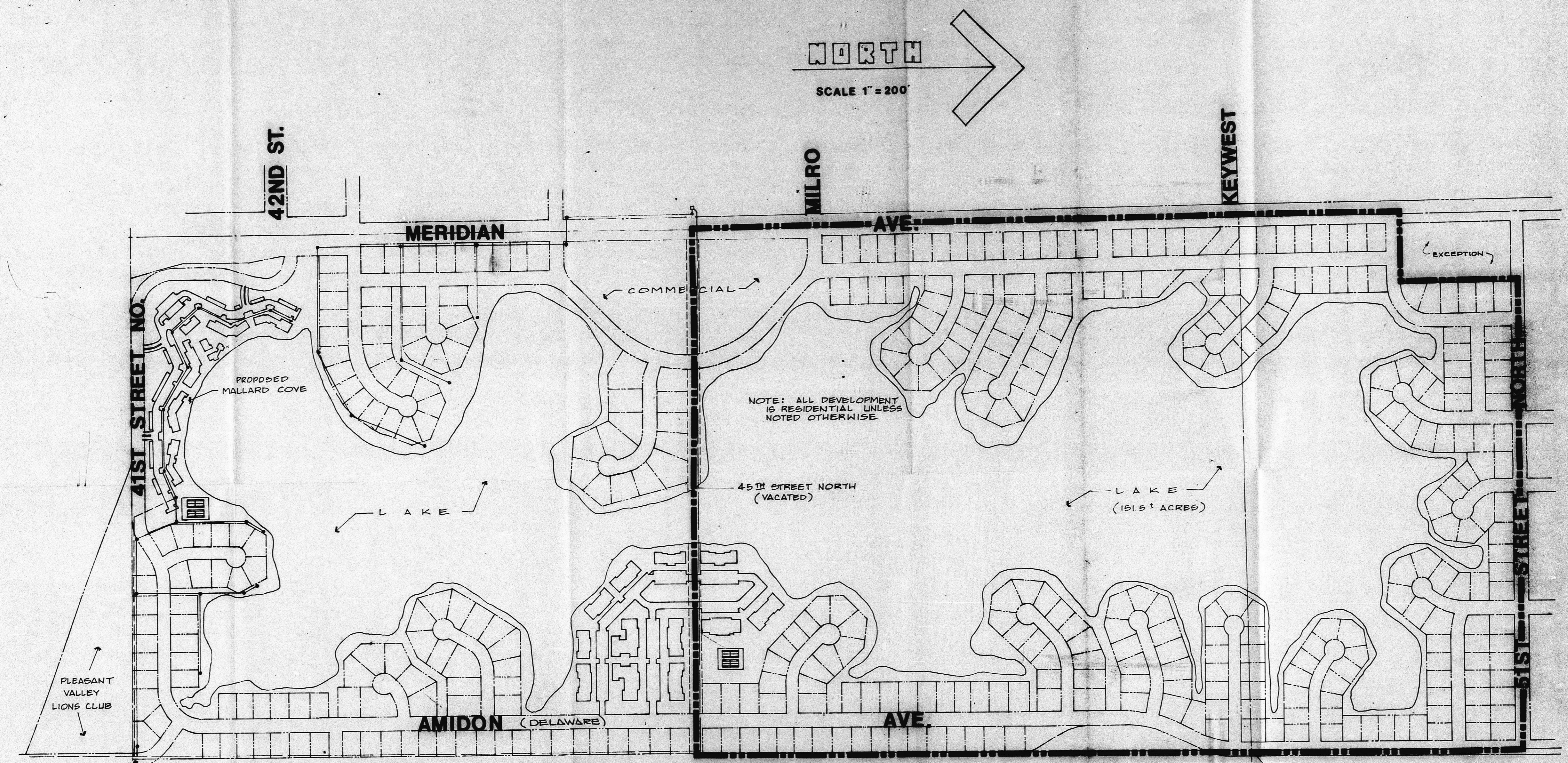
MILES SAND INC.

NOVEMBER 15, 1984

CU-275

REVISED 1-16-85

FILMED FROM THE BEST AVAILABLE COPY



NORTH

SCALE 1" = 200'

42ND ST.

MILRO

KEYWEST

MERIDIAN

AVE.

41ST STREET NORTH

41ST STREET NORTH

NOTE: ALL DEVELOPMENT IS RESIDENTIAL UNLESS NOTED OTHERWISE

45TH STREET NORTH (VACATED)

LAKE (161.5 ACRES)

AMIDON (DELAWARE)

AVE.

CENTER OF SECTION 30-26-1E

CENTER OF SECTION 19-26-1E

REDEVELOPMENT PLAN (REVISED)

MILES SAND INC.

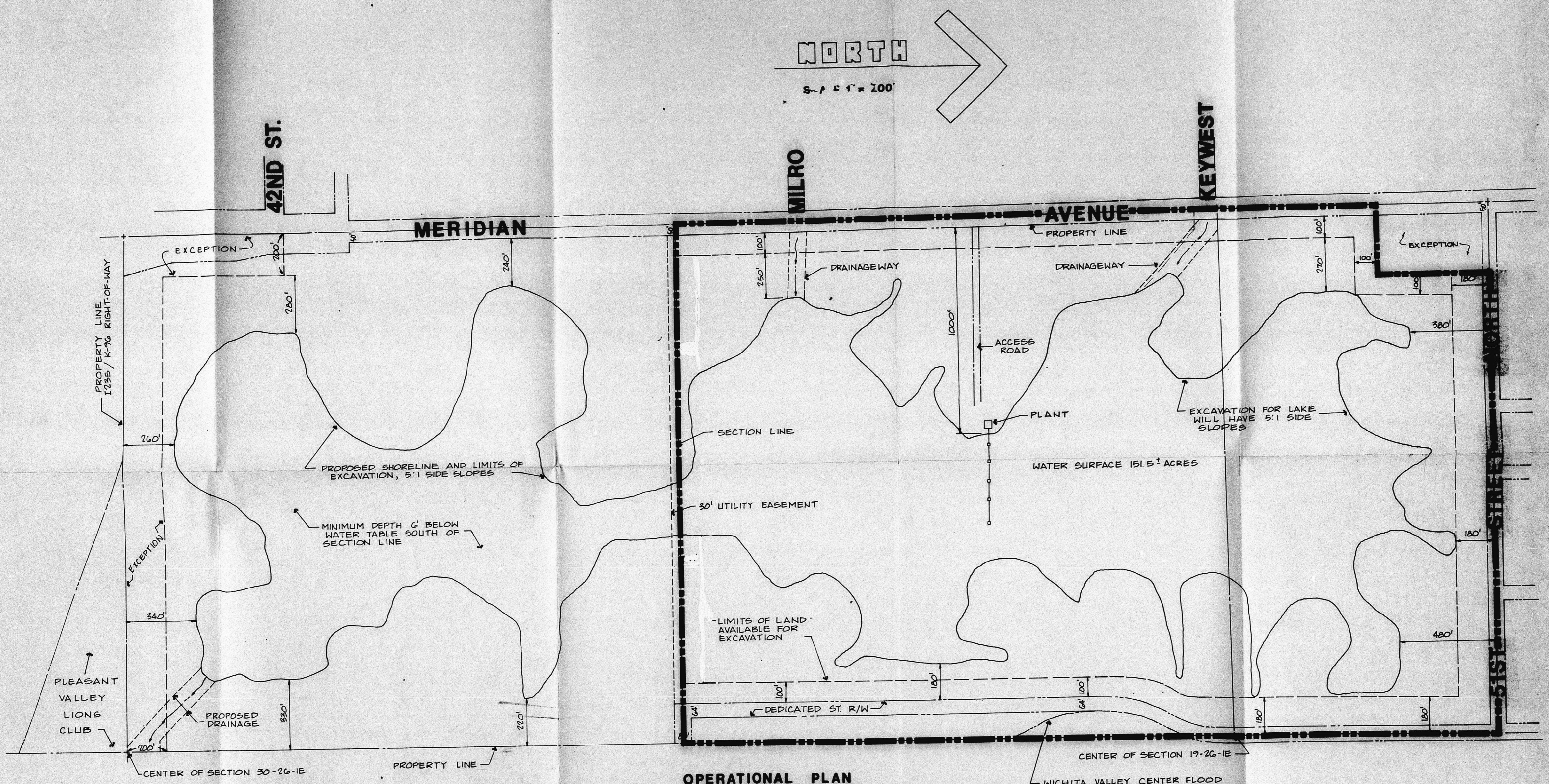
NOVEMBER 15, 1984

CU-275

REVISED 1-16-85

FILMED FROM THE BEST AVAILABLE COPY





OPERATIONAL PLAN  
(REVISED)

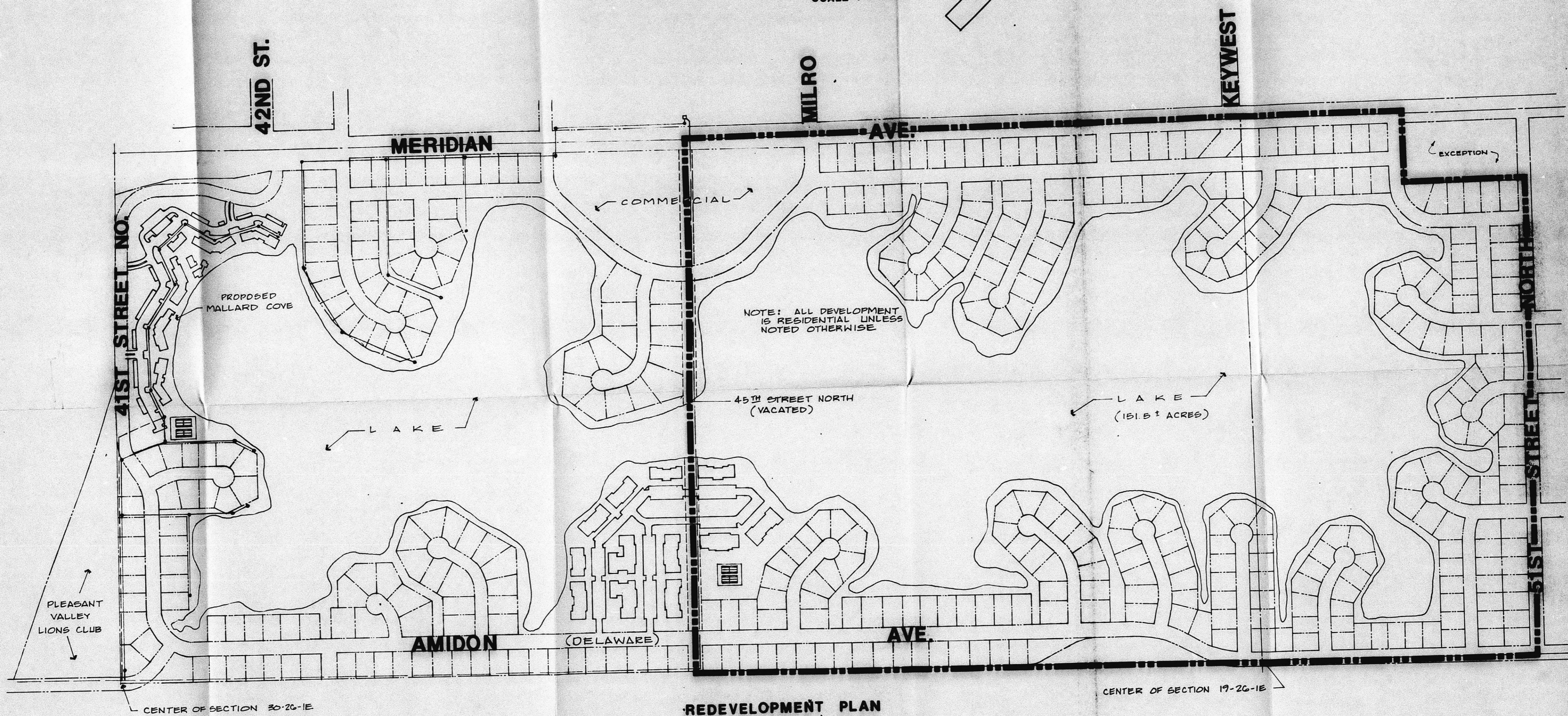
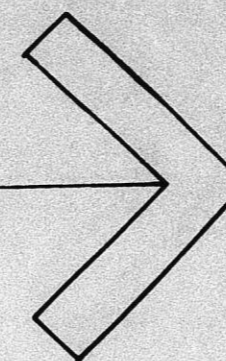
MILES SAND INC.

NOVEMBER 15, 1984

CU-275

NORTH

SCALE 1" = 200'



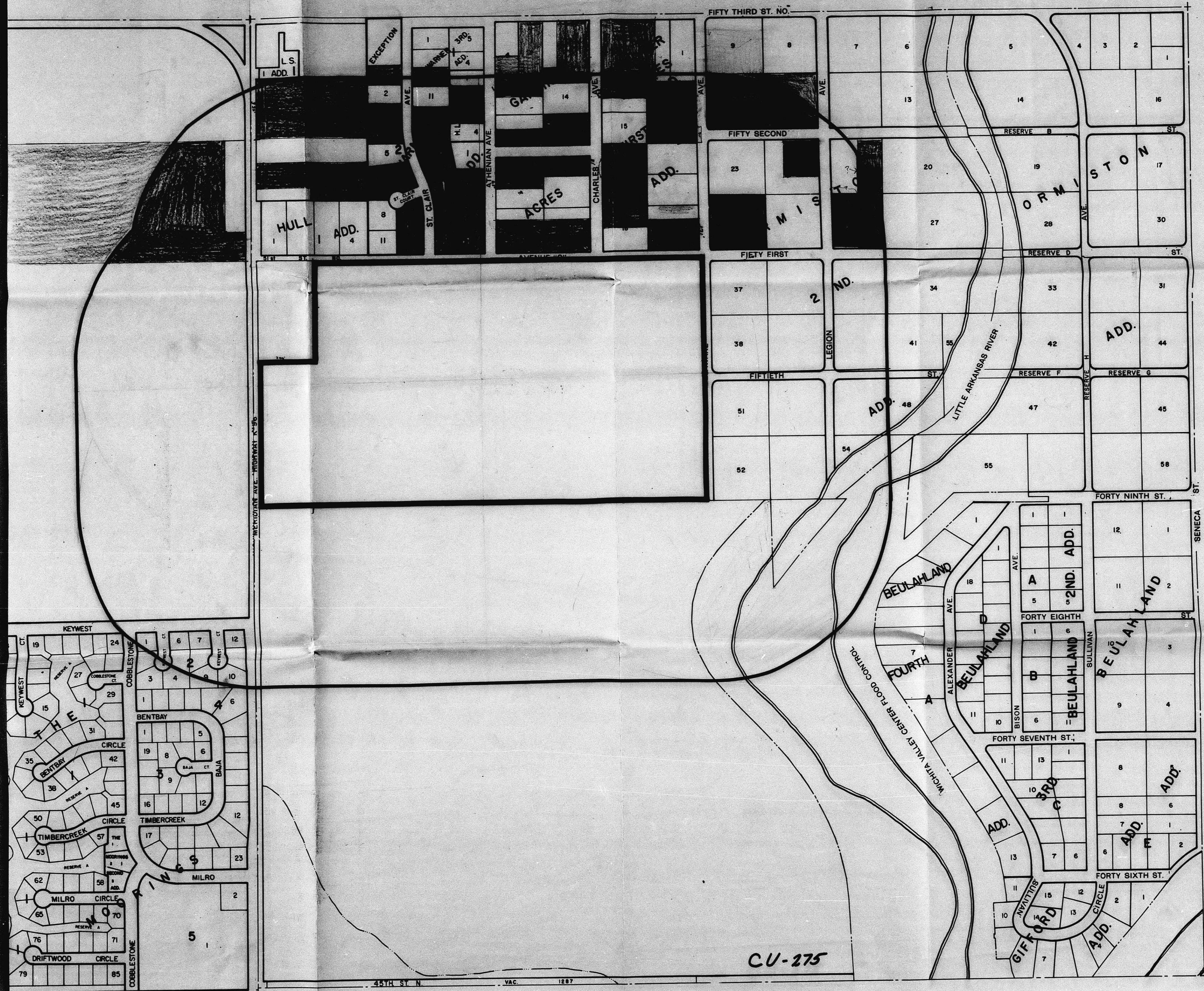
REDEVELOPMENT PLAN  
(REVISED)

MILES SAND INC.

NOVEMBER 15, 1984

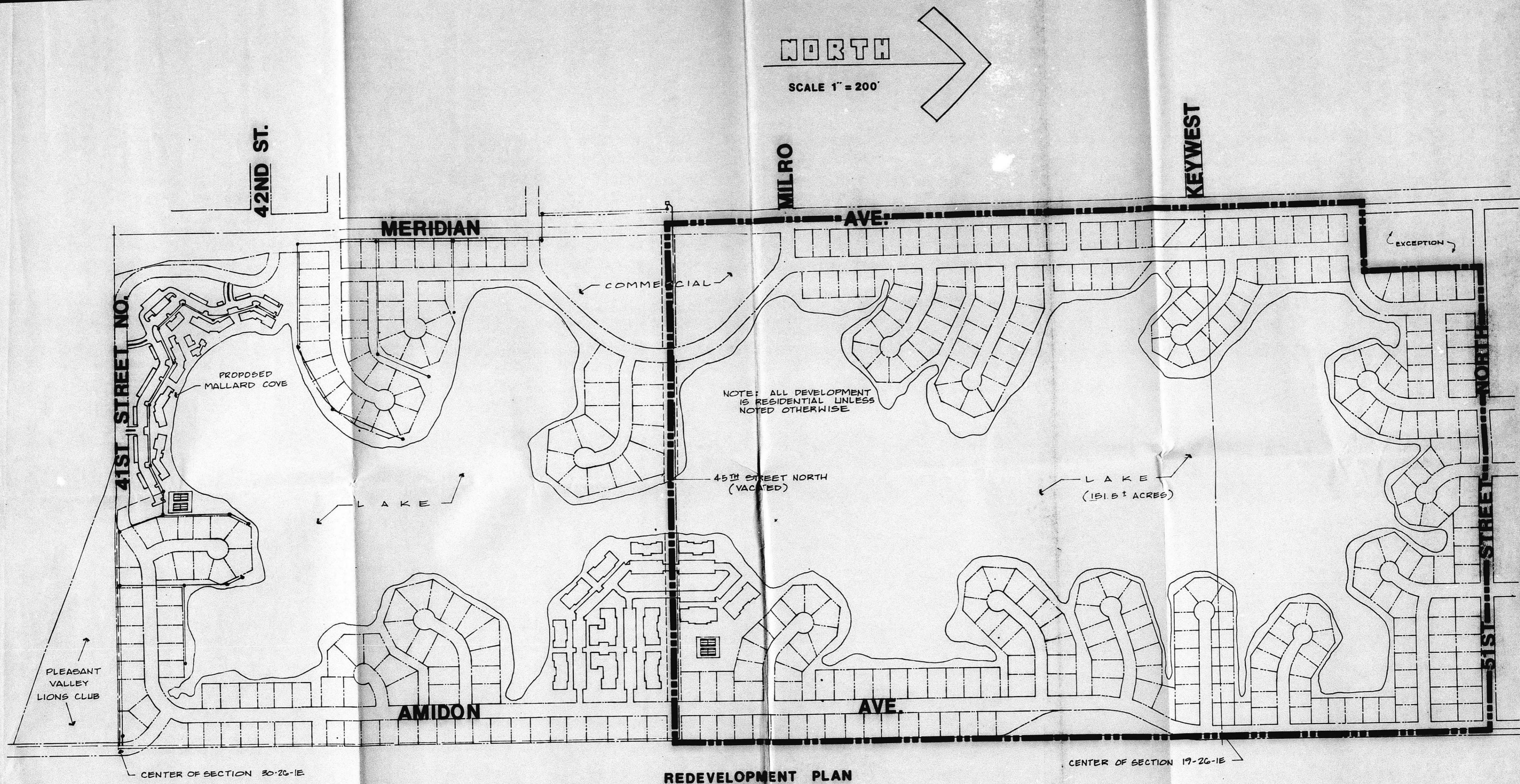
CU-275

CU-273



CU-275





NORTH

SCALE 1" = 200'

42ND ST.

MERIDIAN

MILRO

AVE.

KEYWEST

41ST STREET NORTH

PROPOSED MALLARD COVE

COMMERCIAL

NOTE: ALL DEVELOPMENT IS RESIDENTIAL UNLESS NOTED OTHERWISE

45TH STREET NORTH (VACATED)

LAKE (181.8 ACRES)

PLEASANT VALLEY LIONS CLUB

AMIDON

AVE.

51ST STREET NORTH

CENTER OF SECTION 30-26-1E

CENTER OF SECTION 19-26-1E

REDEVELOPMENT PLAN (REVISED)

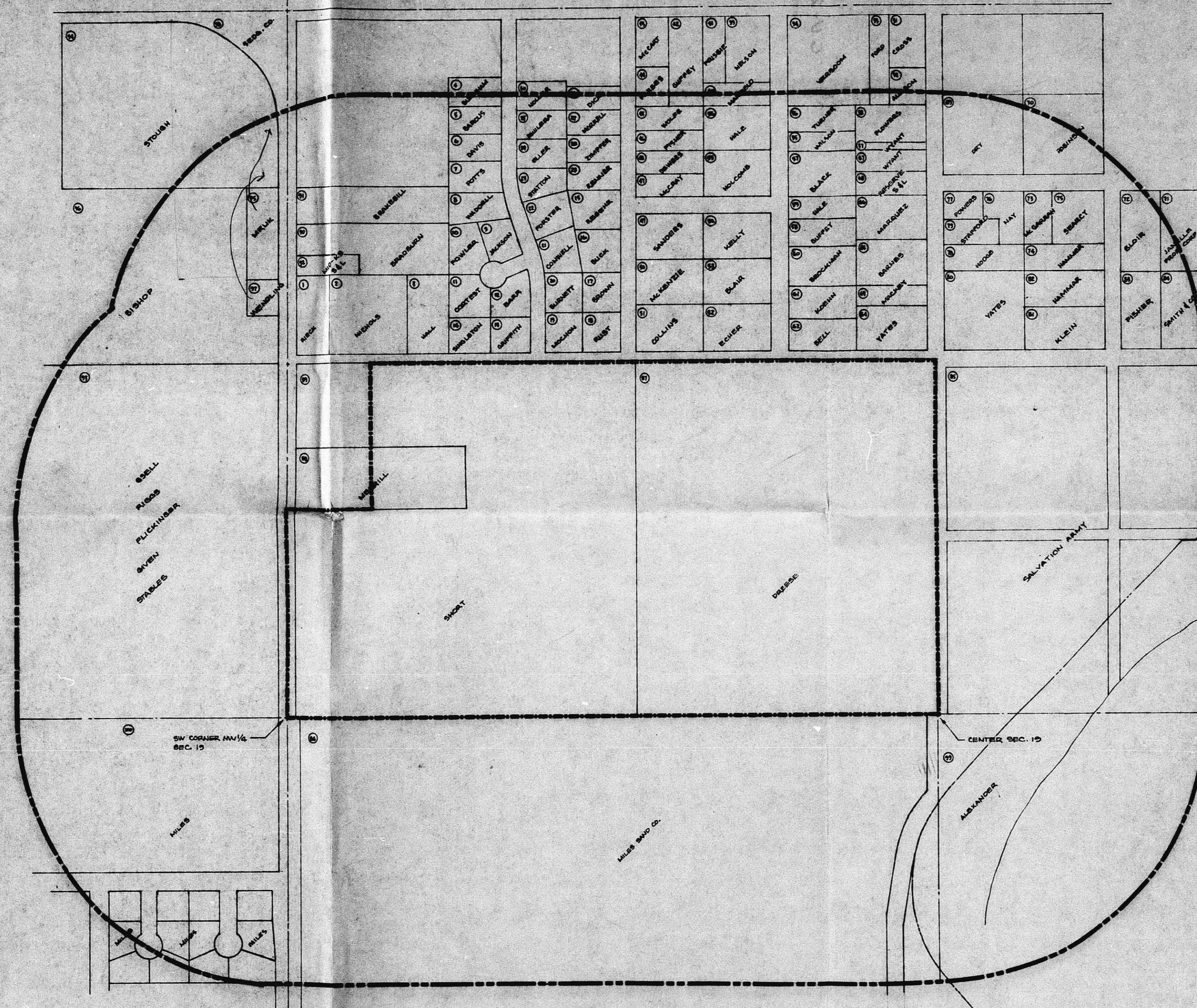
MILES SAND INC.

NOVEMBER 15, 1984

CU-275

FILMED FROM THE BEST AVAILABLE COPY





15.11

4,645,282 NET. AREA

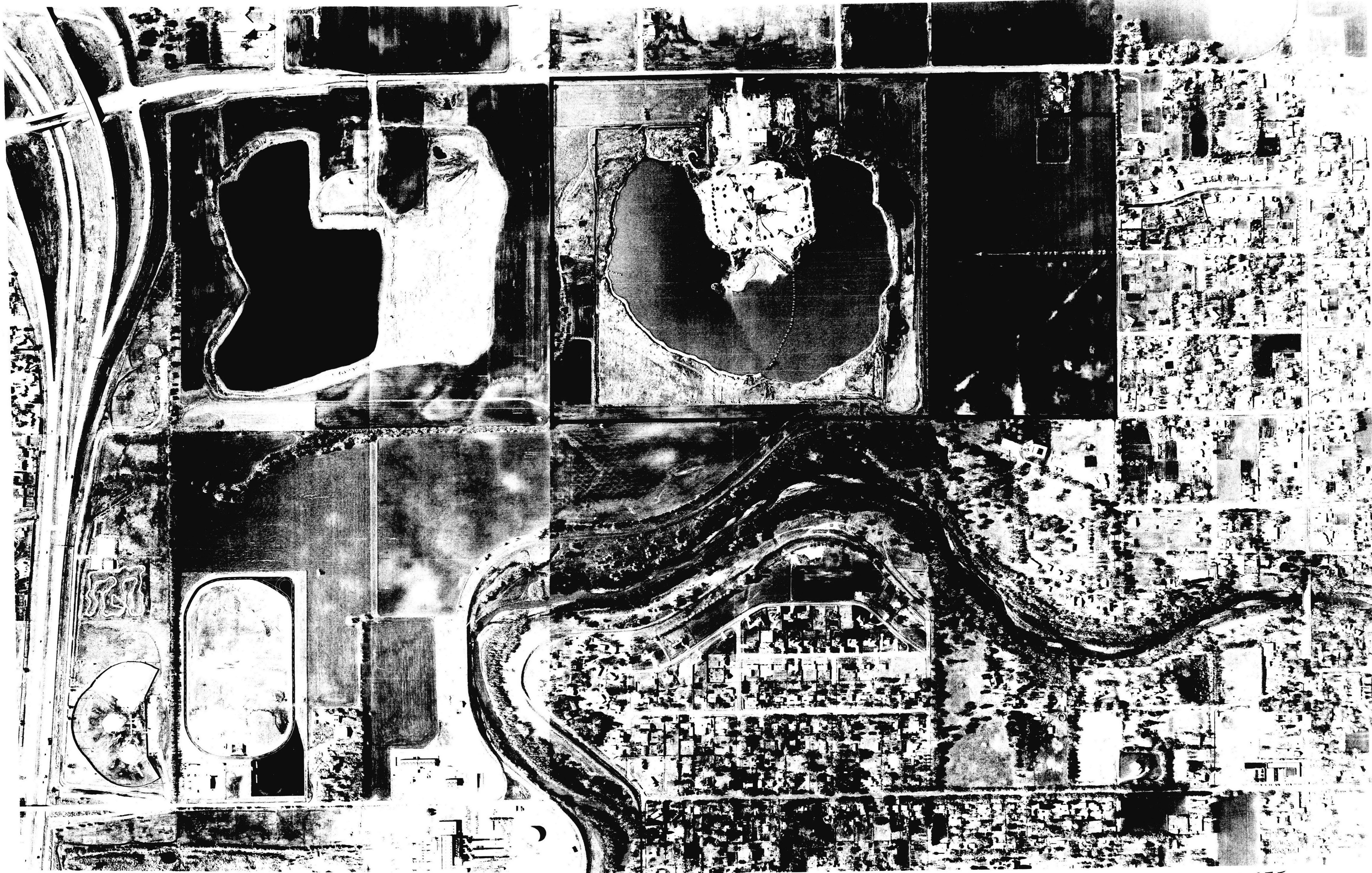
8,574,032 SQ. FT. - AREA 1000' RADIUS LESS PUBLIC R/W  
 1,714,806 SQ. FT. - 20% OF AREA

DATE FEB. 15, 1966

CU-275

prepared by Kenny Hill

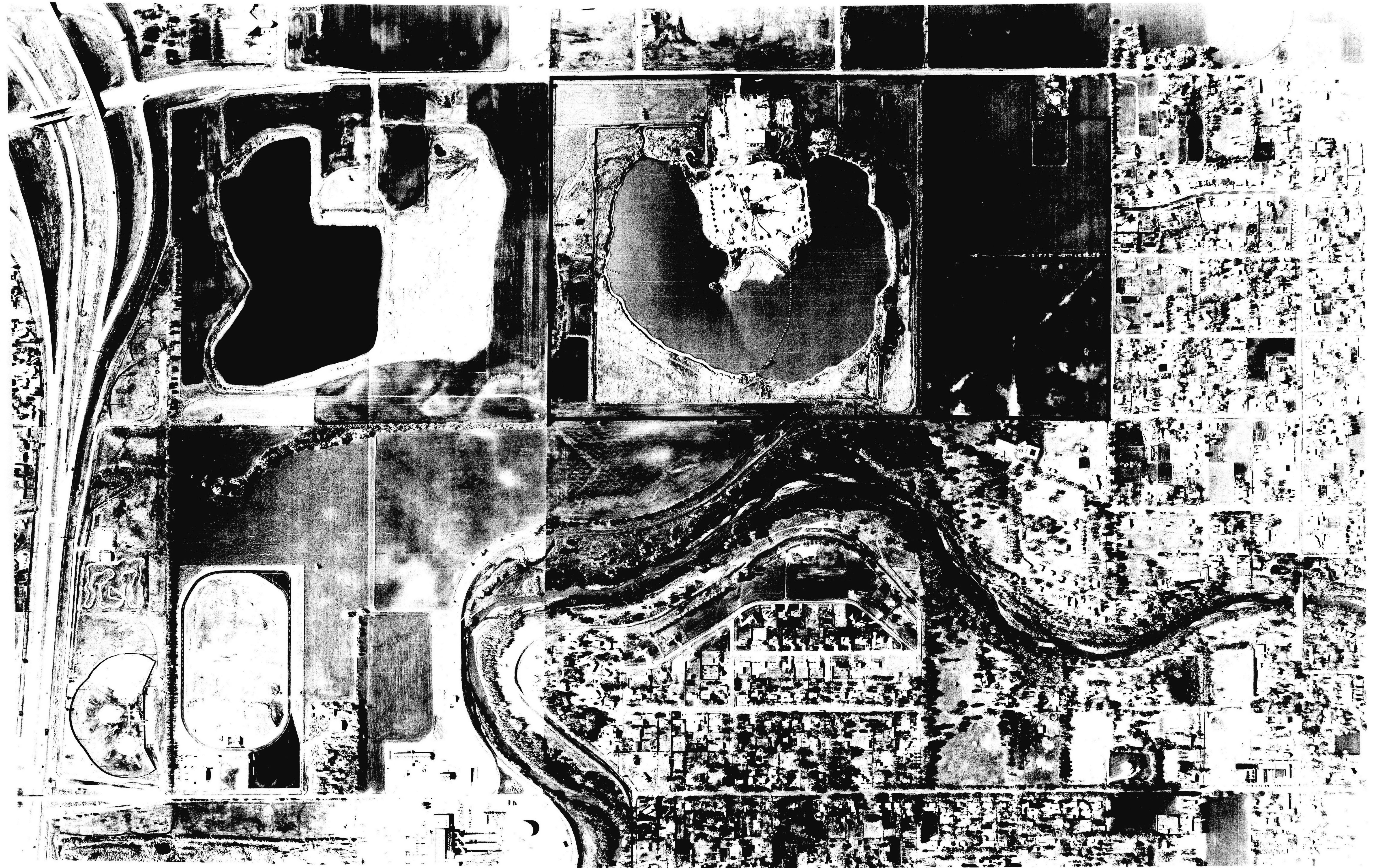
December 1943



CU-275

FILMED FROM THE BEST AVAILABLE COPY ....

Section 100 aerial



CU-275

FILMED FROM THE BEST AVAILABLE COPY ....