

OWNER: MAURICE L. CASTER
ALLIE M. CASTER

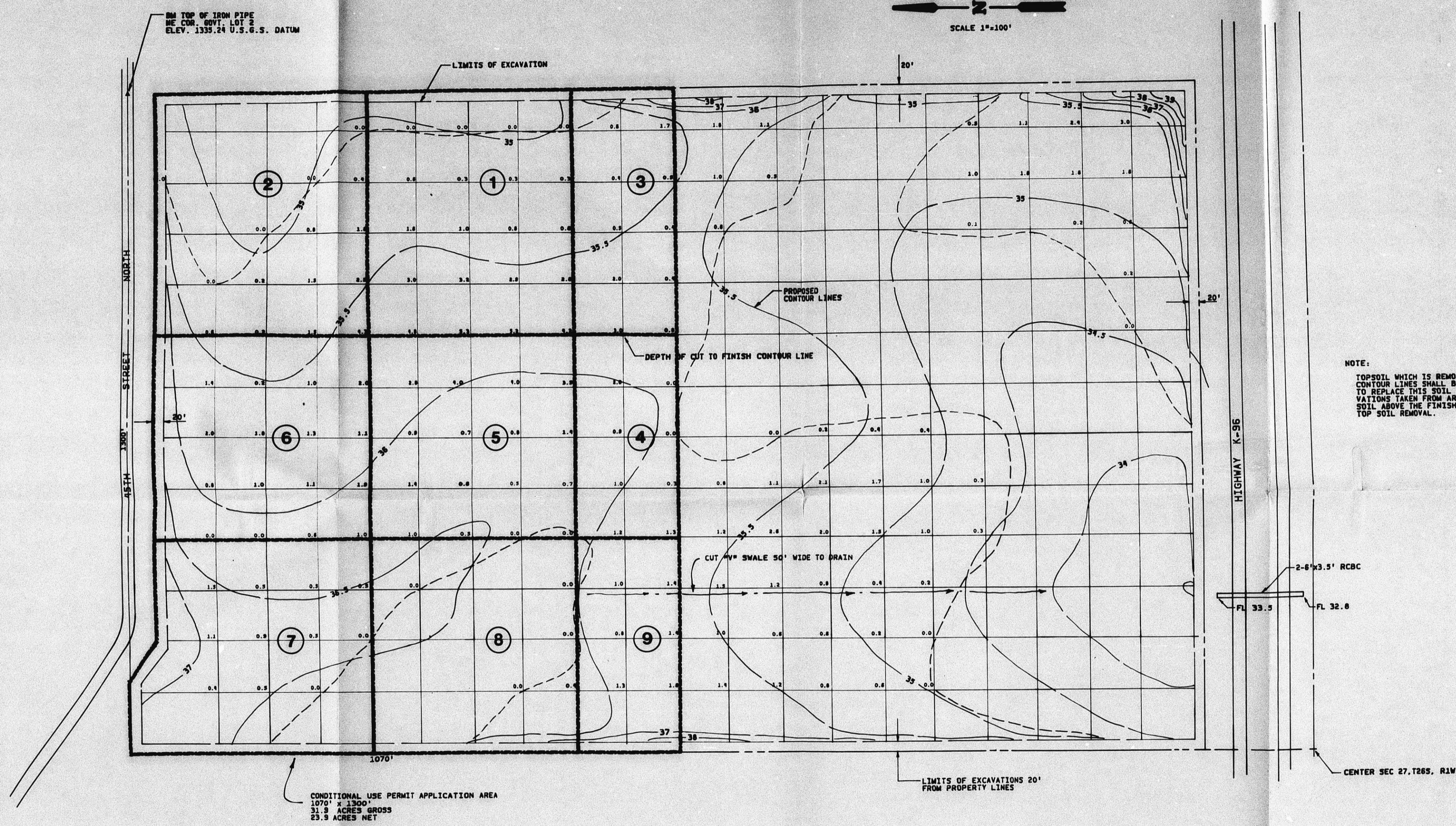
CU-288
SITE GRADING PLAN
 GOV'M'T LOT 2 AND SW 1/4 NE 1/4 SEC. 27, T26S, R1W
 SEDGWICK COUNTY-KANSAS
 SEPTEMBER 23, 1985

dp POE & ASSOCIATES OF KANSAS, INC.
CONSULTING ENGINEERS

Superseded

4900 received 9-23-85. One copy deleted.

FILMED FROM THE BEST AVAILABLE COPY



NOTE:
TOPSOIL WHICH IS REMOVED BELOW THE FINISH
CONTOUR LINES SHALL BE REPLACED. THE FILL
TO REPLACE THIS SOIL SHALL BE WITH EXCA-
VATIONS TAKEN FROM AREAS WHERE THERE IS
SOIL ABOVE THE FINISH CONTOUR LINES AFTER
TOP SOIL REMOVAL.

OWNER: MAURICE L. CASTER
ALLIE M. CASTER

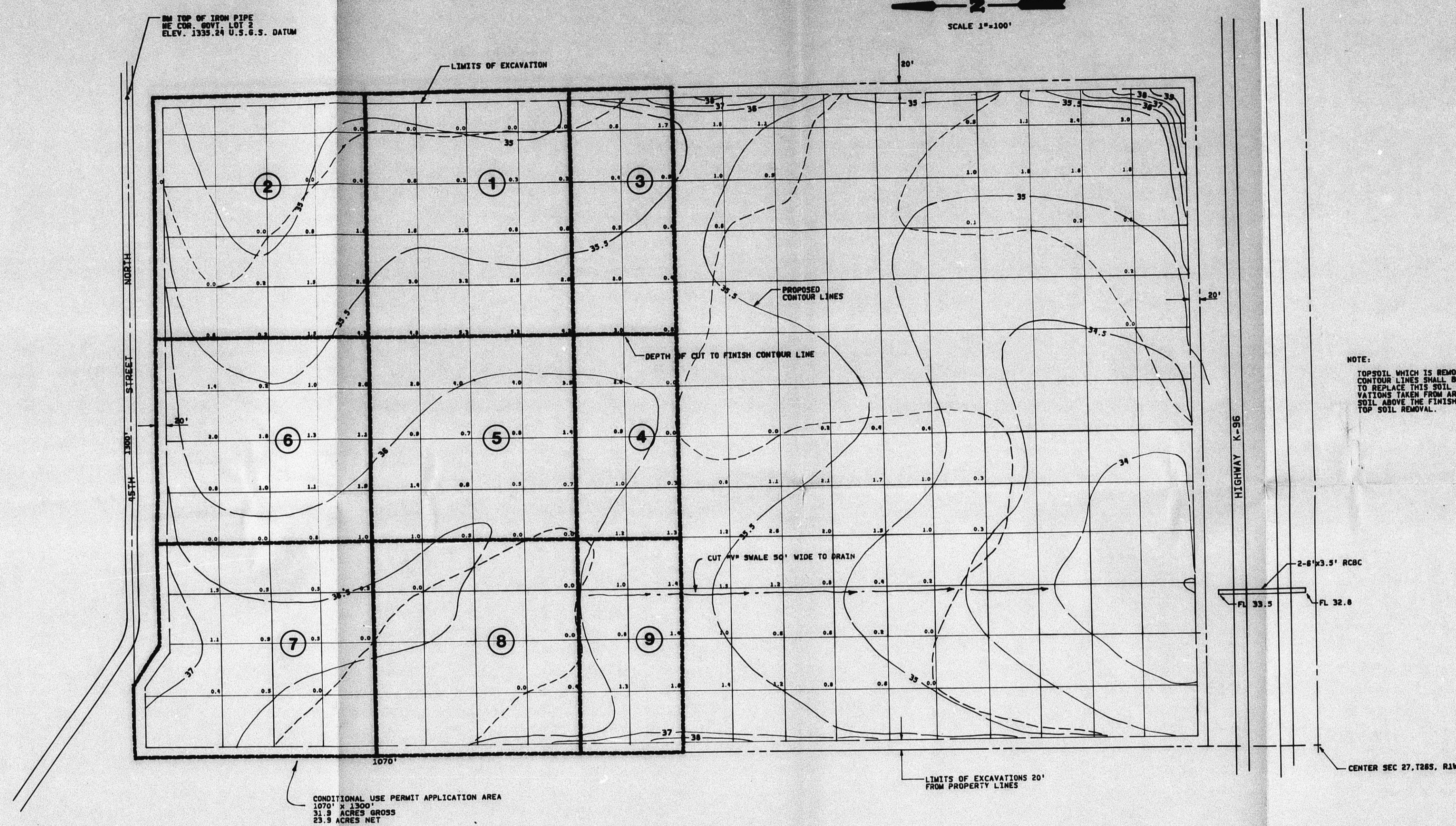
SITE GRADING PLAN
GOV'M'T LOT 2 AND SW 1/4 NE 1/4 SEC. 27, T26S, R1W
SEDGWICK COUNTY-KANSAS

SEPTEMBER 23, 1985
REVISED OCT. 30, 1985

dp POE & ASSOCIATES OF KANSAS, INC.
CONSULTING ENGINEERS

CU-288

FILMED FROM THE BEST
AVAILABLE COPY



NOTE:
TOPSOIL WHICH IS REMOVED BELOW THE FINISH
CONTOUR LINES SHALL BE REPLACED. THE FILL
TO REPLACE THIS SOIL SHALL BE WITH EXCA-
VATIONS TAKEN FROM AREAS WHERE THERE IS
SOIL ABOVE THE FINISH CONTOUR LINES AFTER
TOP SOIL REMOVAL.

OWNER: MAURICE L. CASTER
ALLIE M. CASTER

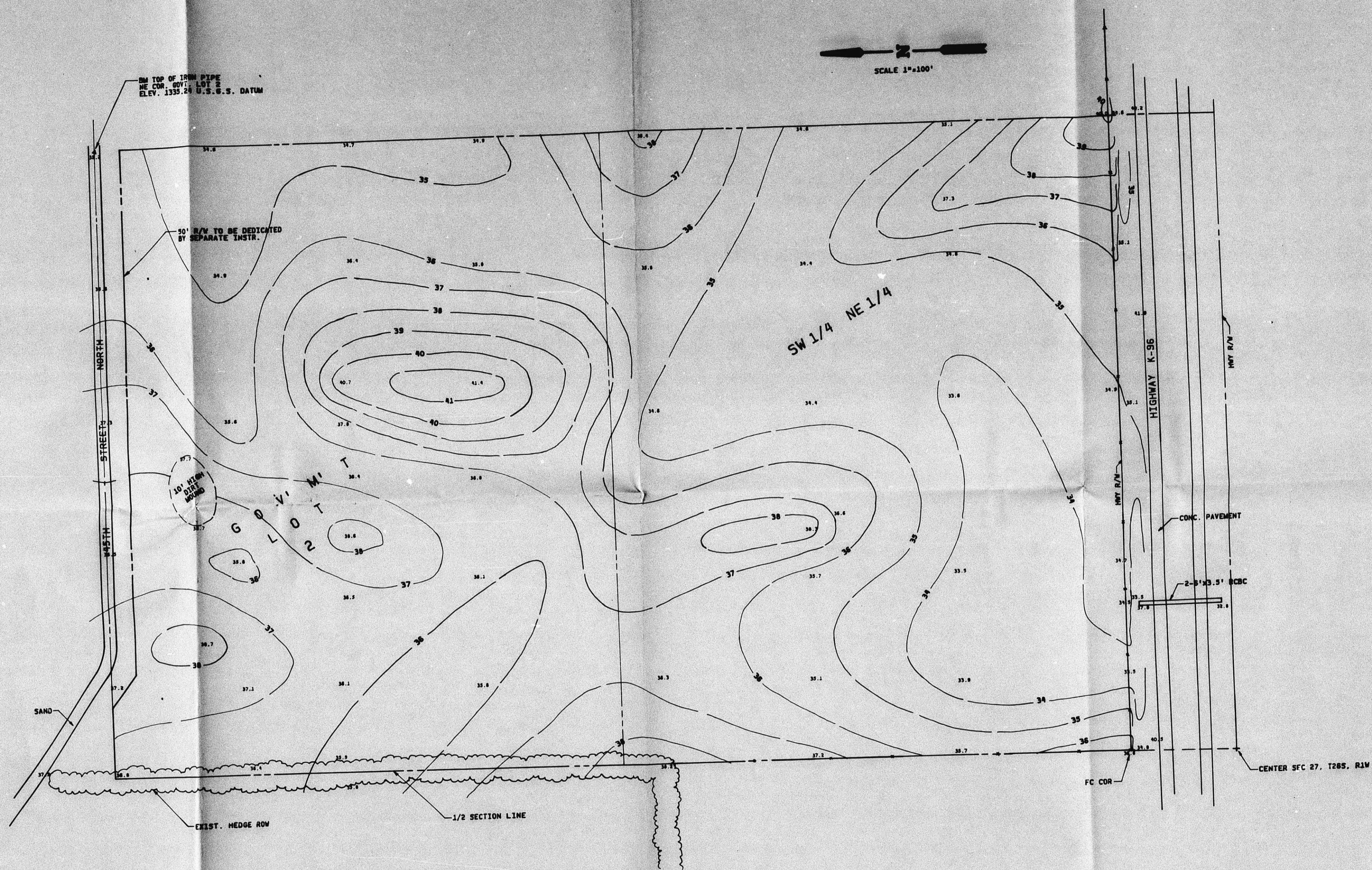
SITE GRADING PLAN
GOV'M'T LOT 2 AND SW 1/4 NE 1/4 SEC. 27, T26S, R1W
SEDGWICK COUNTY-KANSAS

SEPTEMBER 23, 1985
REVISED OCT. 30, 1985

dp POE & ASSOCIATES OF KANSAS, INC.
CONSULTING ENGINEERS

CU-288

FILMED FROM THE BEST
AVAILABLE COPY



CU-288

MAPC APPROVED 10-31-85
BOC APPROVED 12-18-85

TOPOGRAPHIC SURVEY

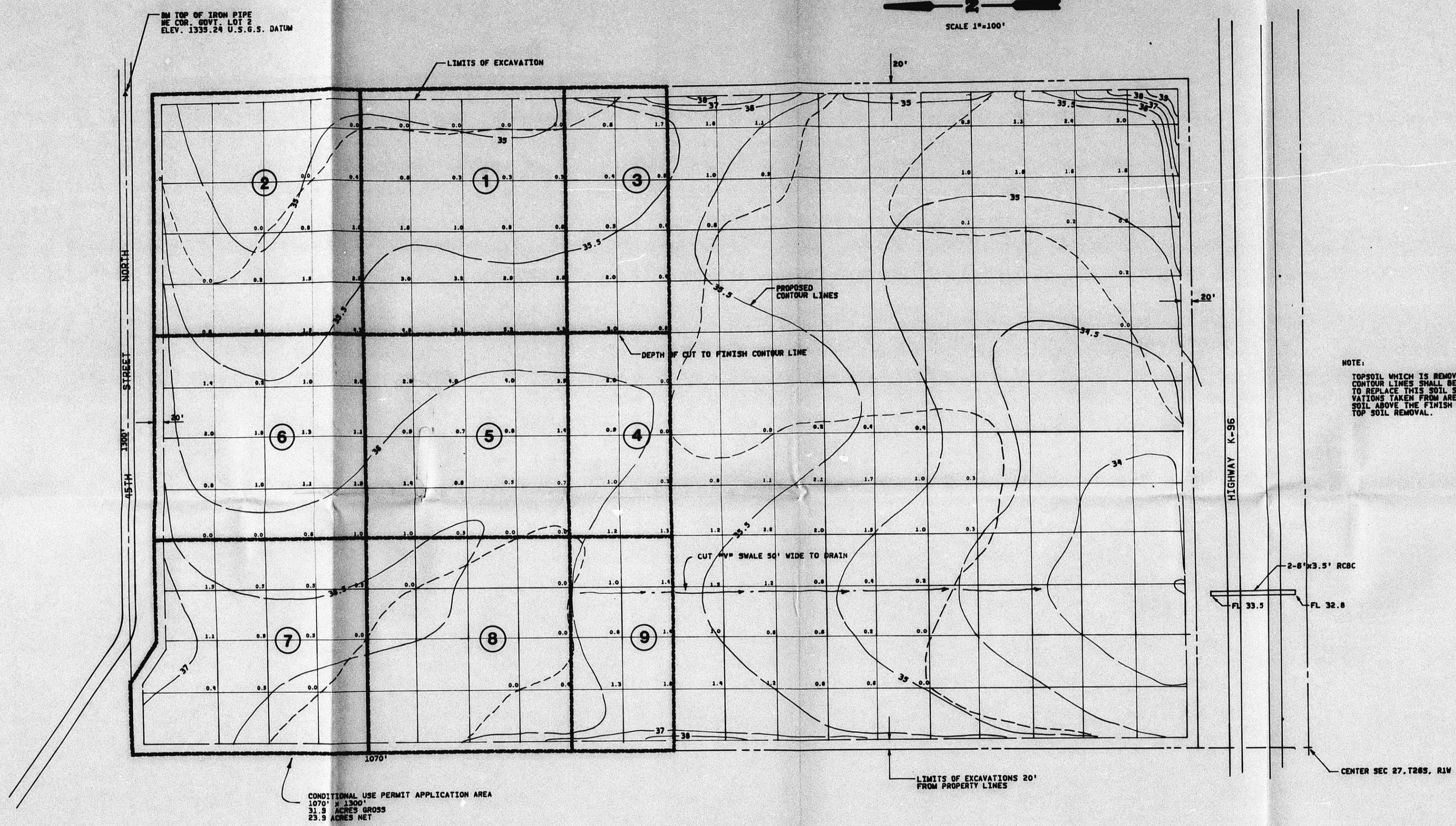
GOV'T LOT 2 AND SW 1/4 NE 1/4 SEC. 27, T26S, R1W
SEDGWICK COUNTY-KANSAS

SEPTEMBER 23, 1985

OWNER: MAURICE L. CASTER
ALLIE M. CASTER

dp POE & ASSOCIATES OF KANSAS, INC.
CONSULTING ENGINEERS

FILMED FROM THE BEST
AVAILABLE COPY



NOTE:
 TOPSOIL WHICH IS REMOVED BELOW THE FINISH CONTOUR LINES SHALL BE REPLACED. THE FILL TO REPLACE THIS SOIL SHALL BE WITH EXCAVATIONS TAKEN FROM AREAS WHERE THERE IS SOIL ABOVE THE FINISH CONTOUR LINES AFTER TOP SOIL REMOVAL.

CONDITIONAL USE PERMIT APPLICATION AREA
 1070' x 1300'
 31.9 ACRES GROSS
 23.9 ACRES NET

CU-288

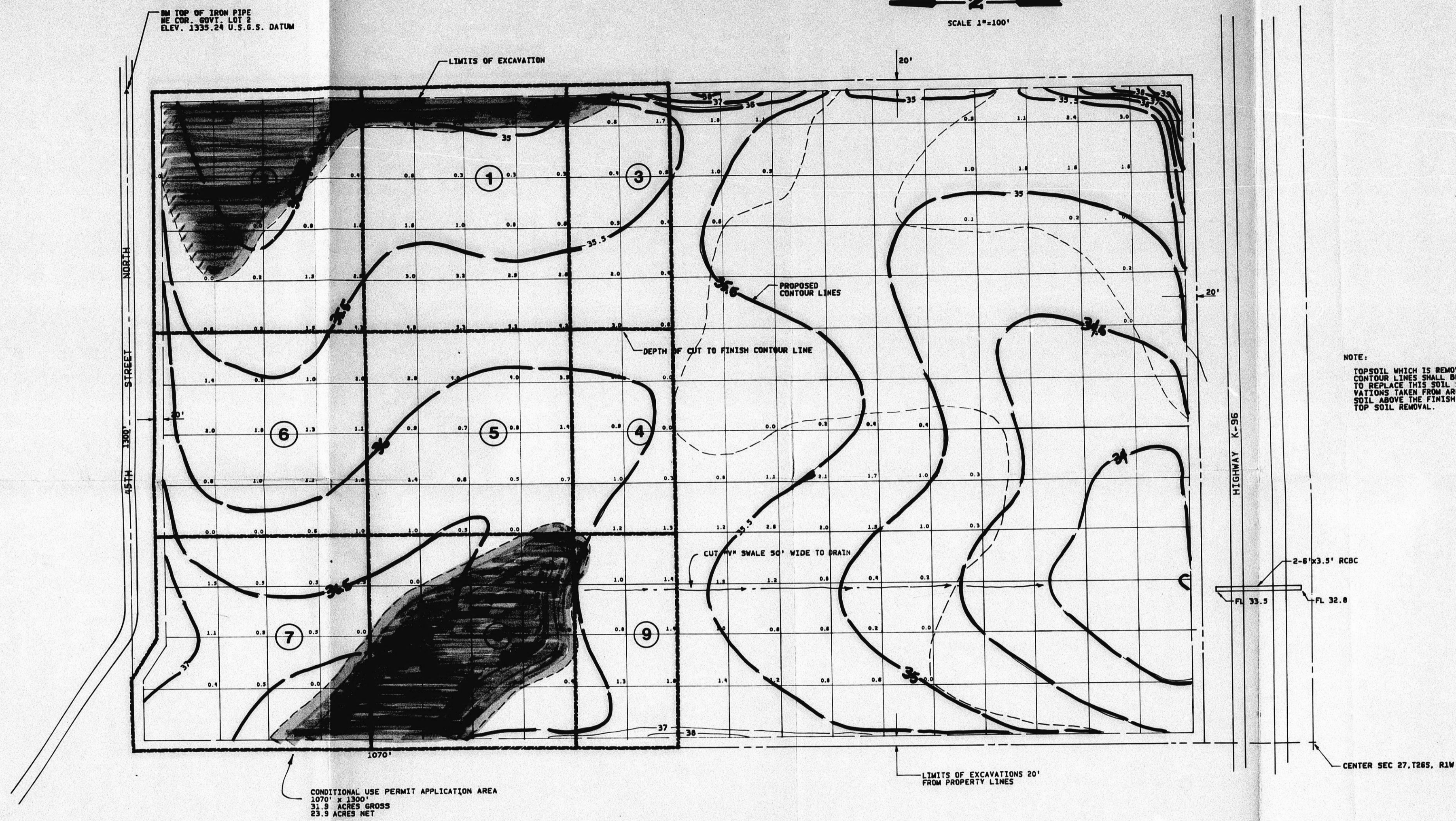
SITE GRADING PLAN

OWNER: MAURICE L. CASTER
 ALLIE M. CASTER

MIPC APPROVED 10-31-85 GOV'M'T LOT 2 AND SW 1/4 NE 1/4 SEC. 27, T26S, R1W
 BCC APPROVED 12-18-85 SEDGWICK COUNTY-KANSAS

dp POE & ASSOCIATES OF KANSAS, INC.
 CONSULTING ENGINEERS

SEPTEMBER 23, 1985
 REVISED OCT. 30, 1985



CU-288

MAPC APPROVED 10-31-85
BCC APPROVED 12-18-85

OWNER: MAURICE L. CASTER
ALLIE M. CASTER

SITE GRADING PLAN

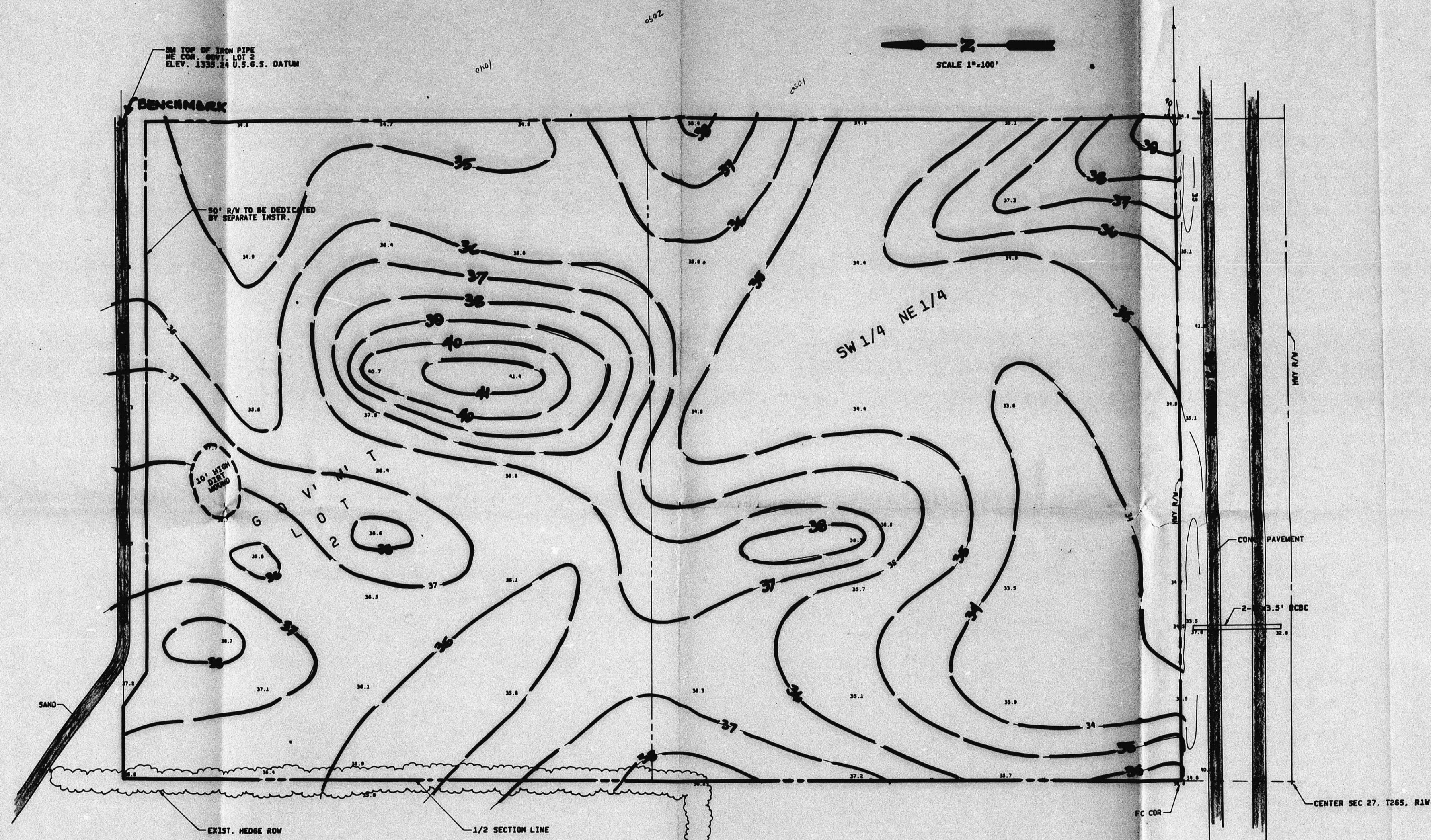
GOV'M'T LOT 2 AND SW 1/4 NE 1/4 SEC. 27, T26S, R1W
SEDGWICK COUNTY-KANSAS

SEPTEMBER 23, 1985
REVISED OCT. 30, 1985

dp POE & ASSOCIATES OF KANSAS, INC.
CONSULTING ENGINEERS

■ - NO EXCAVATION PROPOSED

FILMED FROM THE BEST AVAILABLE COPY



CU-288

CU-288
MAPC APPROVED 10-31-85
BSCC APPROVED 12-18-85

TOPOGRAPHIC SURVEY

GOV'T LOT 2 AND SW 1/4 NE 1/4 SEC. 27, T26S, R1W
SEDGWICK COUNTY-KANSAS

SEPTEMBER 23, 1985

OWNER: MAURICE L. CASTER
ALLIE M. CASTER

dp POE & ASSOCIATES OF KANSAS, INC.
CONSULTING ENGINEERS

MAPD received 9-25-85. See copy to file.

FILMED FROM THE BEST
AVAILABLE COPY