

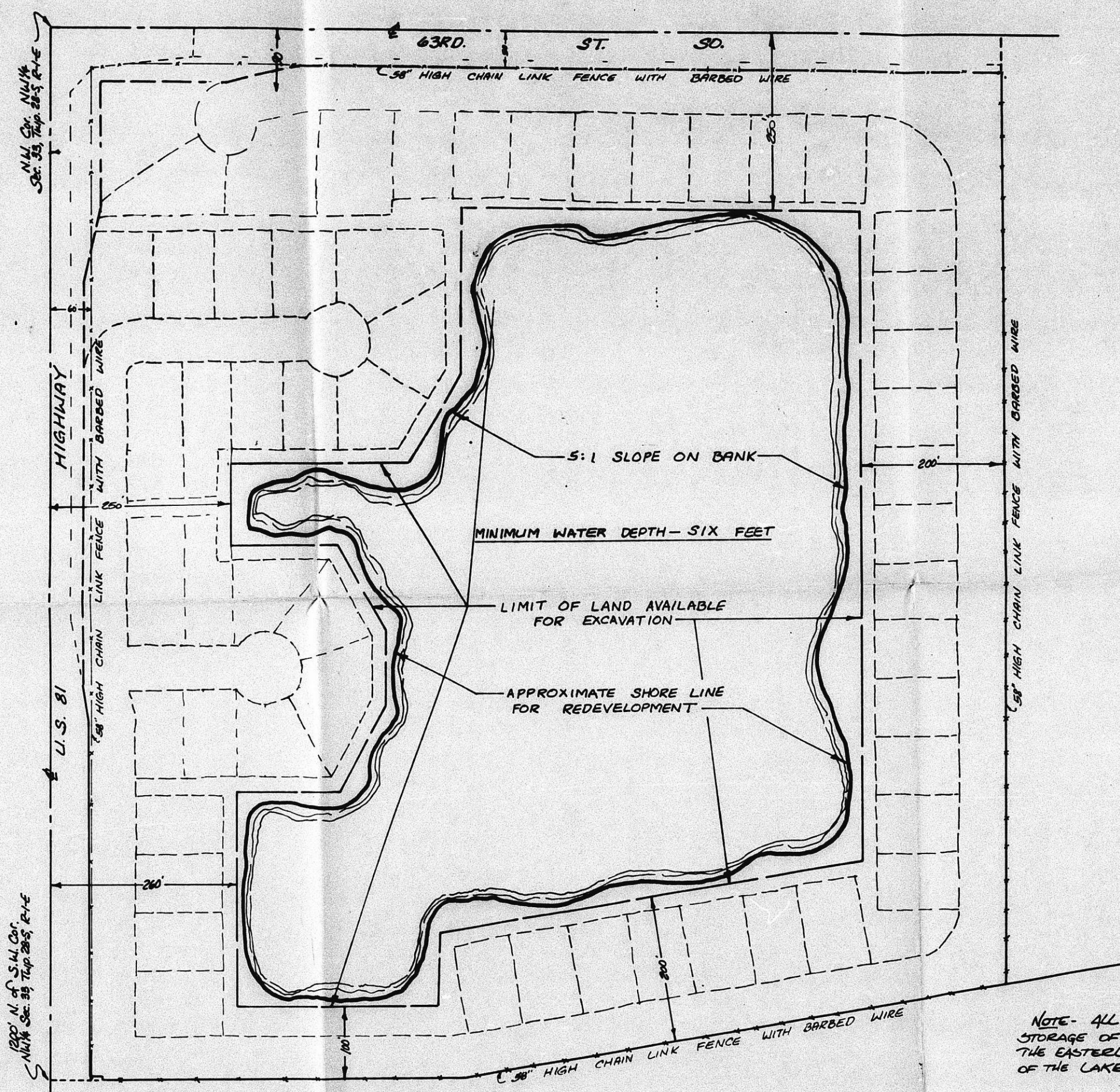
**EARTHEN AND SAND EXTRACTION OPERATION**  
**DeWITT LAND CO., INC.**

CU-291  
 MAPC approved 5-15-86  
 BCC approved 6-4-86

DeWITT LAND CO., INC. OWNER

MAY 12, 1986

MAPD COPY 2 of 3



NOTE - ALL SAND PLANT OPERATION AND STORAGE OF EQUIPMENT SHALL BE ALONG THE EASTERLY OR SOUTHEASTERLY SIDES OF THE LAKE.

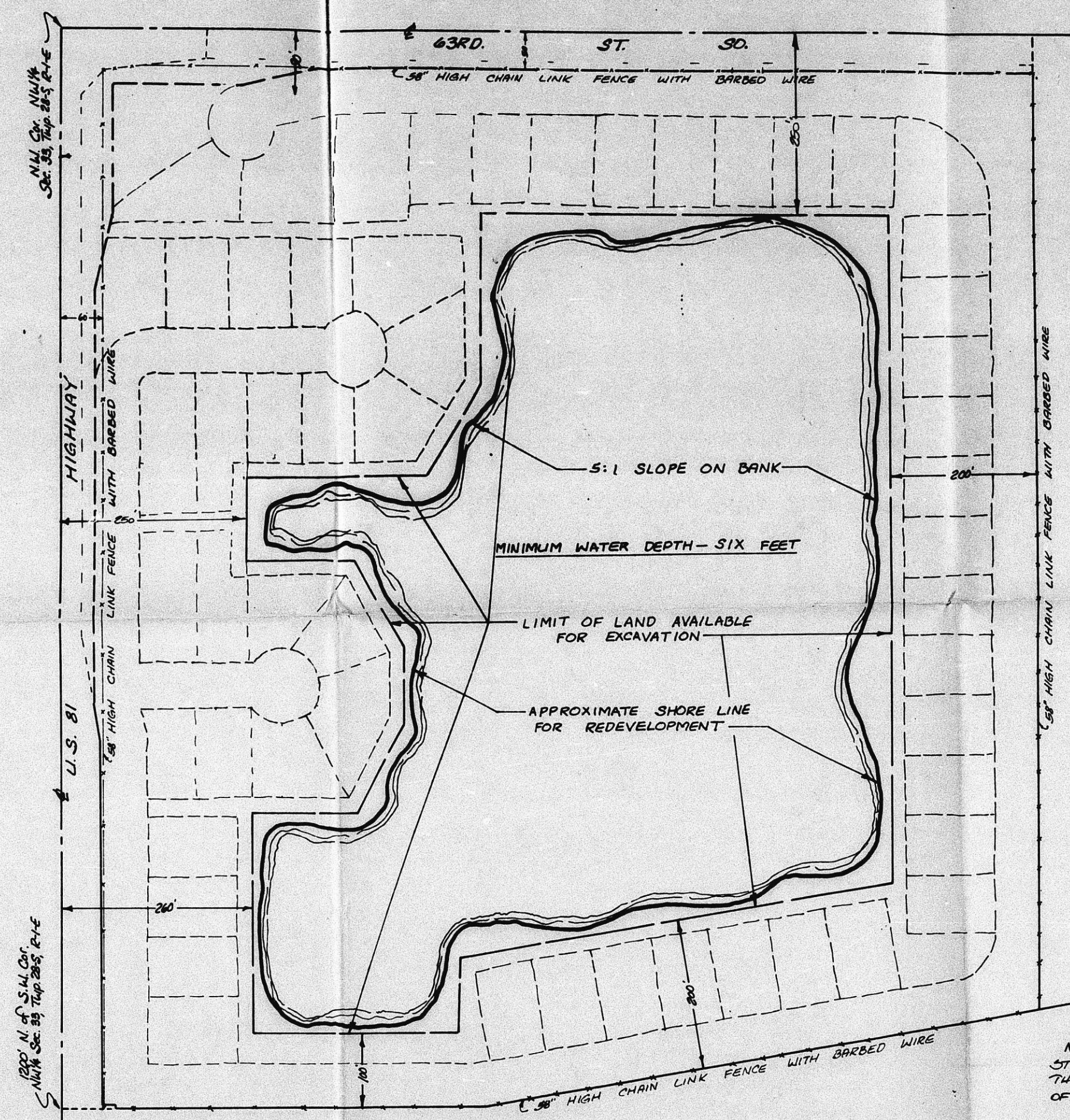
WICHITA-VALLEY CENTER FLOOD CONTROL

EARTHEN AND SAND EXTRACTION OPERATION  
**DeWITT LAND CO., INC.** CU-291  
 MAPC approved 5-15-86  
 B.C. approved 6-11-86  
 DeWITT LAND CO., INC. OWNER

MAY 12, 1986

MAPD COPY 3003

FILMED FROM THE BEST AVAILABLE COPY



NOTE - ALL SAND PLANT OPERATION AND STORAGE OF EQUIPMENT SHALL BE ALONG THE EASTERLY OR SOUTHEASTERLY SIDES OF THE LAKE.

WICHITA - VALLEY CENTER FLOOD CONTROL

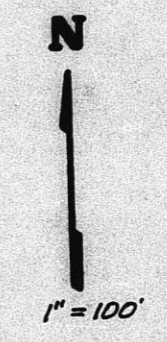
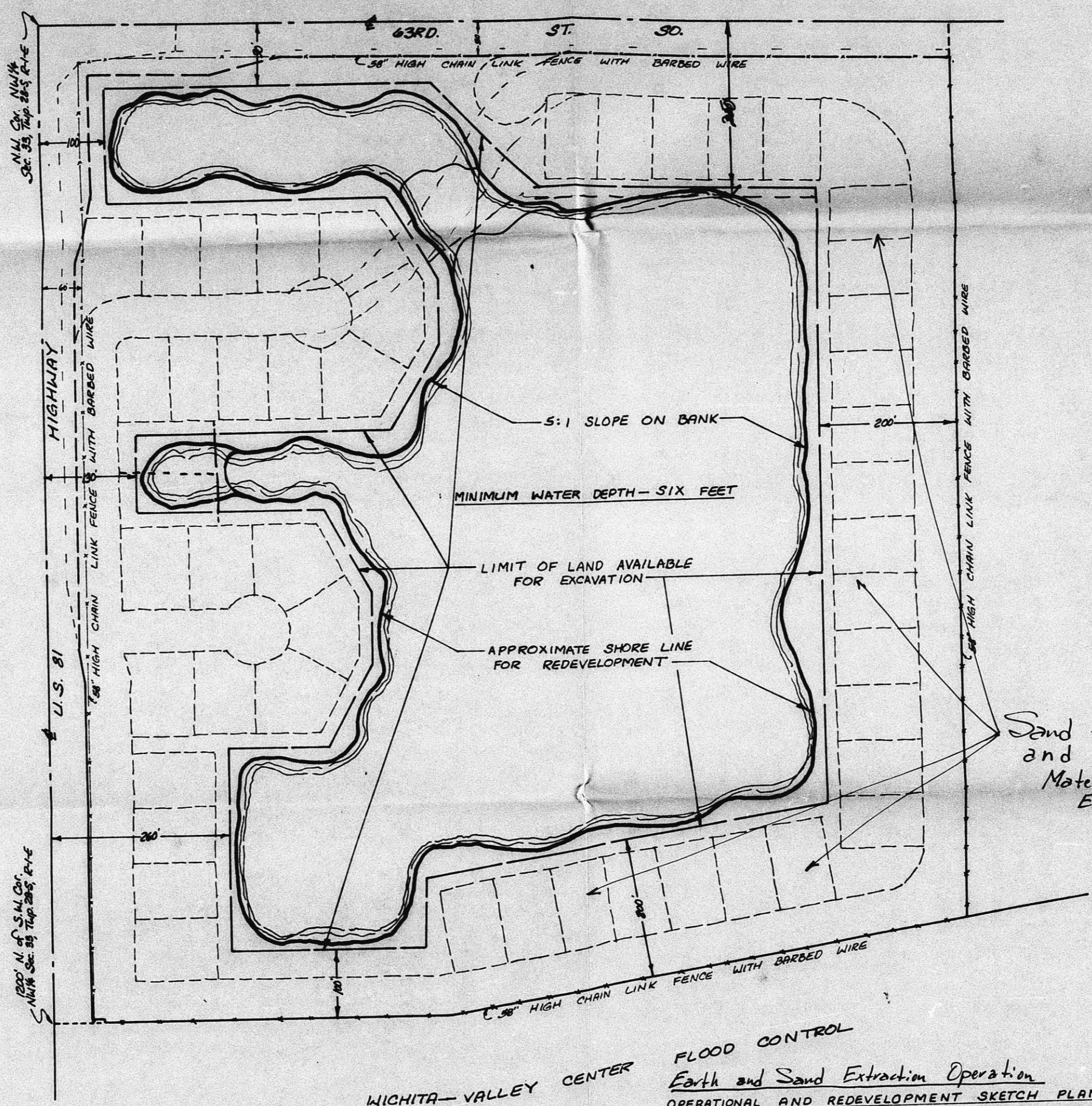
EARTHEN AND SAND EXTRACTION OPERATION  
**DeWITT LAND CO., INC.** CU-291  
 MAPC approved 5-15-86  
 BCC approved 6-11-86

DeWITT LAND CO., INC. OWNER

MAY 12, 1986

MAPD COPY 1 of 3

FILMED FROM THE BEST AVAILABLE COPY



Sand Plant Operations  
and Storage of Equipment &  
Materials shall be on the  
East and Southeast  
Sides of the lake

WICHITA-VALLEY CENTER FLOOD CONTROL  
Earth and Sand Extraction Operation  
OPERATIONAL AND REDEVELOPMENT SKETCH PLAN FOR:  
**DEWITT LAND CO., INC.**  
DEWITT LAND CO., INC. DEVELOPER  
DEWITT LAND CO., INC. OWNER  
CU-29/

AS SUBMITTED FOR STAFF REVIEW 9 May 1986  
6 OCT 83