

TYPE "A" FOUNDATIONS

TYPE "B" FOUNDATIONS

TYPE "A" FOUNDATIONS EXCEPT AS NOTED

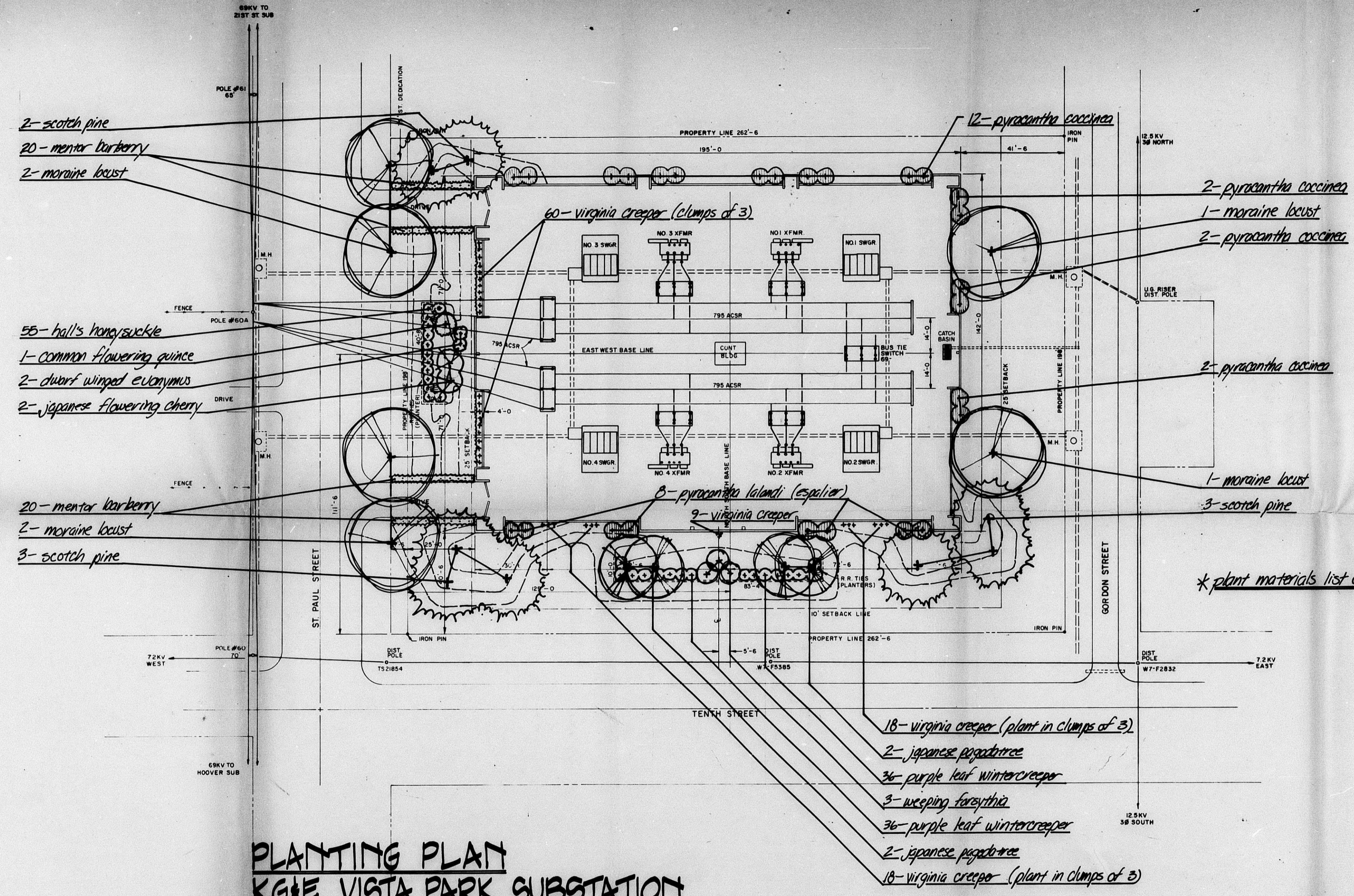
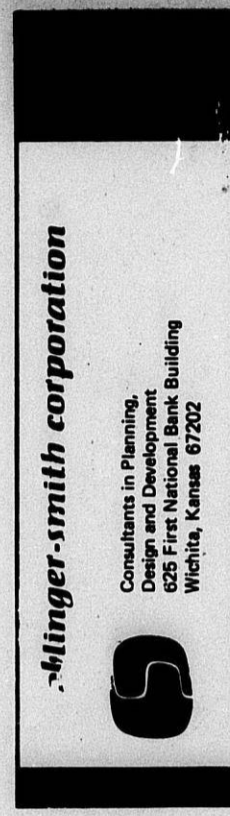
TYPE "A" FOUNDATIONS EXCEPT AS NOTED

DR 73-2

VISTA PARK SUBSTATION
WALL ELEVATIONS

DR R.B.C. APPROVED *[Signature]*
 CE R.W. DATE 4-11-73 SCALE 1/8"=1'-0" SH. 3 OF 8 SHEETS
 KANSAS GAS AND ELECTRIC COMPANY
 ENGINEERING DEPT. KD-7294

NO.	DATE	REVISION	BY	CK.	APP.	NO.	DATE	REVISION	BY	CK.	APP.	NO.	DATE	REVISION	BY	CK.	APP.



* plant materials list on sheet Z.

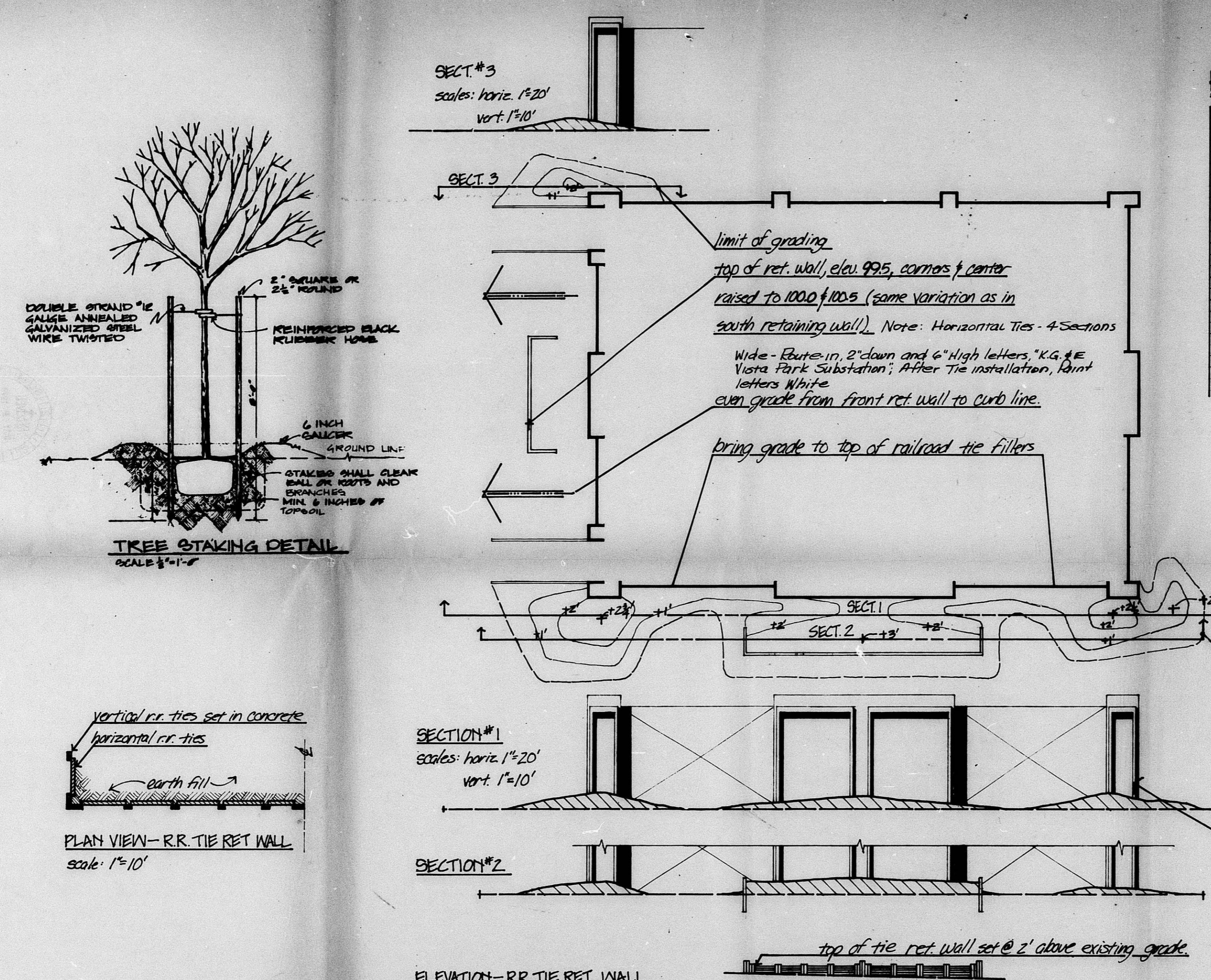
PLANTING PLAN KGE VISTA PARK SUBSTATION



DR 73-2
VISTA PARK SUBSTATION
LANDSCAPE PLAN

NO.	DATE	REVISION	BY	CK.	APP.	NO.	DATE	REVISION	BY	CK.	APP.	NO.	DATE	REVISION	BY	CK.	APP.

DRC OF O.B.S.
 CK D.L.L. APPROVED: J. J. [Signature]
 DATE: 4-27-73 SCALE: 1" = 20'
 KANSAS GAS AND ELECTRIC COMPANY SH. 11 OF 3 SHTS.
 ENGINEERING DEPT. KANSAS CITY, MISSOURI 64108
 KD-7348



PLANT MATERIAL LIST:

QTY	COMMON NAME	BOTANICAL NAME	SIZE/CONT.	REMARKS
2	japanese flowering cherry	prunus amagawa	6-8" ht, cont.	spring flower
4	japanese pagoda tree	sophora japonica	2-2 1/2" cal, B/B	
6	moraine locust	g. t. l. 'moraine'	2 1/2-3 cal, B/B	low maintenance
8	scotch pine	pinus sylvestris	12-14" ht, B/B	
1	common fl. quince	chaenomeles lagenaria	24-36" ht, B/B	
2	dwarf winged euon.	evonymus alatus 'compact'	24-36" ht, B/B	fall color
3	weeping forsythia	forsythia suspensa	24-36" ht, B/B	spr. bloom, int. form
10	winter barberry	berberis mentaransis	18-24" ht, cont.	
26	pyracantha	pyracantha coccinea	24-30" ht, B/B	interesting form
55	hall's hangesuckle	l. j. halliana purpurea	2 1/2" pots	
72	purple leaf wintercreeper	euon. fortunei coloratus	2 1/2" pots	fall color
105	virginia creeper	parthenocissis quinquefolia	2 1/2" pots	clump in 3s.

**GENERAL EARTH BERM GRADING PLAN
KGIE VISTA PARK SUBSTATION**

DR 73-2
VISTA PARK SUBSTATION
LANDSCAPE DETAILS

NO.	DATE	REVISION	BY	CK.	APP.	NO.	DATE	REVISION	BY	CK.	APP.	NO.	DATE	REVISION	BY	CK.	APP.

DR. C.E. OF D.B.A.
CK. D.L.
DATE 4-27-73
SCALE AS SHOWN
BL. 2 OF 3 SHEETS
KANSAS GAS AND ELECTRIC COMPANY
ENGINEERING DEPT.
DATE 4-27-73
SCALE AS SHOWN
BL. 2 OF 3 SHEETS
KANSAS GAS AND ELECTRIC COMPANY
ENGINEERING DEPT.
KD-7348