

T

SD 65-89

S/D COMM. 5-10-66

APPROVE SUBJECT TO:
CONDITIONS ON BACK
(OVER)

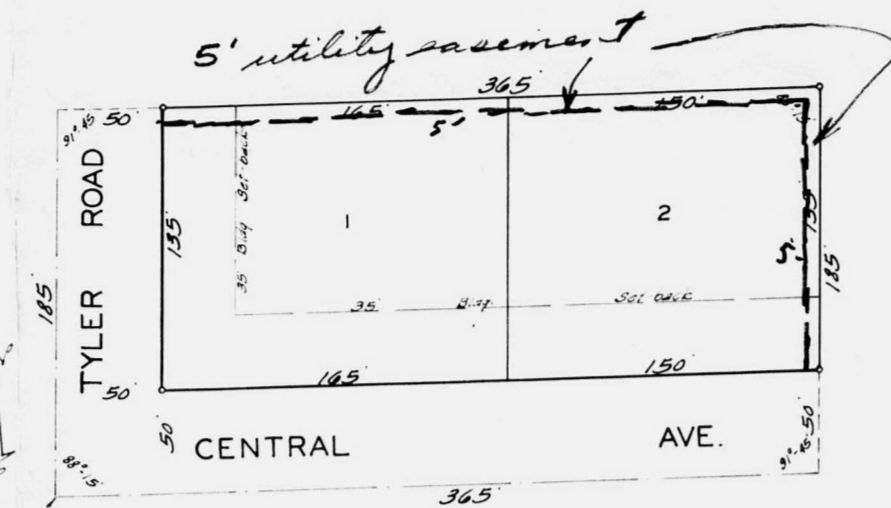
TYLER ACRES SECOND ADDITION

TO WICHITA, KANSAS.

FINAL PLAT
SD 65-89
OFFICE COPY
DO NOT REMOVE

State of Kansas) s.s. We, Baughman Company, Surveyors in aforesaid county and state do hereby certify that we have surveyed and plotted "TYLER ACRES SECOND ADDITION" to Wichita, Kansas, and that the accompanying plat is a true and correct exhibit of the property surveyed, described as follows: Beginning at a point located east of the NW corner of the NE 1/4 of Sec. 25, Twp. 27-S, R-1-E; thence east along the north line of said NE 1/4, 400 feet; thence south parallel with the west line of said NE 1/4, 400 feet; thence west 400 feet; thence north 600 feet to beginning, except the north part for US 54 Hi-way.

Baughman Company
Surveyor



Know all men by these presents that we, Edward T. Neville and Rita A. Neville his wife, have caused the land described in the surveyors certificate to be platted into lots, a road, and avenue to be known as "TYLER ACRES SECOND ADDITION" to Wichita, Kansas. The road and avenue are hereby dedicated to and for the use of the public.

This plat of "TYLER ACRES SECOND ADDITION" to Wichita, Kansas, has been approved by the Wichita, Sedgewick County Metropolitan Area Planning Commission, Wichita, Kansas, and is hereby transmitted to the Board of Commissioners of the City of Wichita, Kansas, with the recommendation that such plat be approved as proposed.

Dated this _____ day of _____, 1966.
Wichita, Sedgewick County Metropolitan Area Planning Commission

Chairman

Secretary

Approved by the Board of City Commissioners this _____ day of _____, 1966.

Mayor

City Clerk

Approved by the Board of County Commissioners this _____ day of _____, 1966.

Chairman

Commissioner

Commissioner

County Clerk

Entered on transfer record this _____ day of _____, 1966.

County Clerk

State of Kansas) s.s. Be it remembered that on this _____ day of _____, 1966, before me a notary public in aforesaid county and state came Edward T. Neville and Rita A. Neville his wife, to me known to be the same persons who executed the foregoing instrument of writing and duly acknowledged the execution of the same. In testimony whereof, I have hereunto set my hand and affixed my notarial seal the day and year above written.

Notary Public
My Commission Expires _____

We, Wichita Perpetual Building and Loan Association, holders of a mortgage on a portion of the above described property do hereby consent to the plat of "TYLER ACRES SECOND ADDITION" to Wichita, Kansas.

Wichita Perpetual Building and Loan Association

State of Kansas) s.s. Be it remembered that on this _____ day of _____, 1966, before me a notary public in aforesaid county and state came _____ of Wichita Perpetual Building and Loan Association, to me known to be the same persons who executed the foregoing instrument of writing and duly acknowledged the execution of the same. In testimony whereof, I have hereunto set my hand and affixed my notarial seal the day and year above written.

Notary Public
My Commission Expires _____

State of Kansas) s.s. This is to certify that this plat was filed for record in the office of the Register of Deeds, this _____ day of _____, 1966, at _____ o'clock _____ M; and is duly recorded.

Register of Deeds

SD 64-70

FINAL PLAT UNIVERSALS FIRST ADDITION

SD 64-70
OFFICE COPY
DO NOT REMOVE

TO WICHITA, KANSAS.

State of Kansas) s.s. We, Baughman Company, Surveyors in aforesaid county and state do hereby certify that we have surveyed and plotted "UNIVERSALS FIRST ADDITION" to Wichita, Kansas, and that the accompanying plat is a true and correct exhibit of the property surveyed, described as follows: Beginning at a point located east of the NW corner of the NE 1/4 of Sec. 25, Twp. 27-S, R-1-E; thence east along the north line of said NE 1/4, 400 feet; thence south parallel with the west line of said NE 1/4, 400 feet; thence west 400 feet; thence north 600 feet to beginning, except the north part for US 54 Hi-way.

Baughman Company, Surveyors
by _____ Engineer

Know all men by these presents that we, Universal Service Stations Inc. a corporation by Gerald B. Maloney, President and Lawrence Weigand, Secretary, and Carl V. Maloney and Honore B. Maloney his wife, and John Lawrence Weigand, a single person, have caused the land described in the surveyors certificate to be platted into lots, drives and a street to be known as "UNIVERSALS FIRST ADDITION" to Wichita, Kansas. The drives and street are hereby dedicated to and for the use of the public.

Universal Service Stations Inc.

President

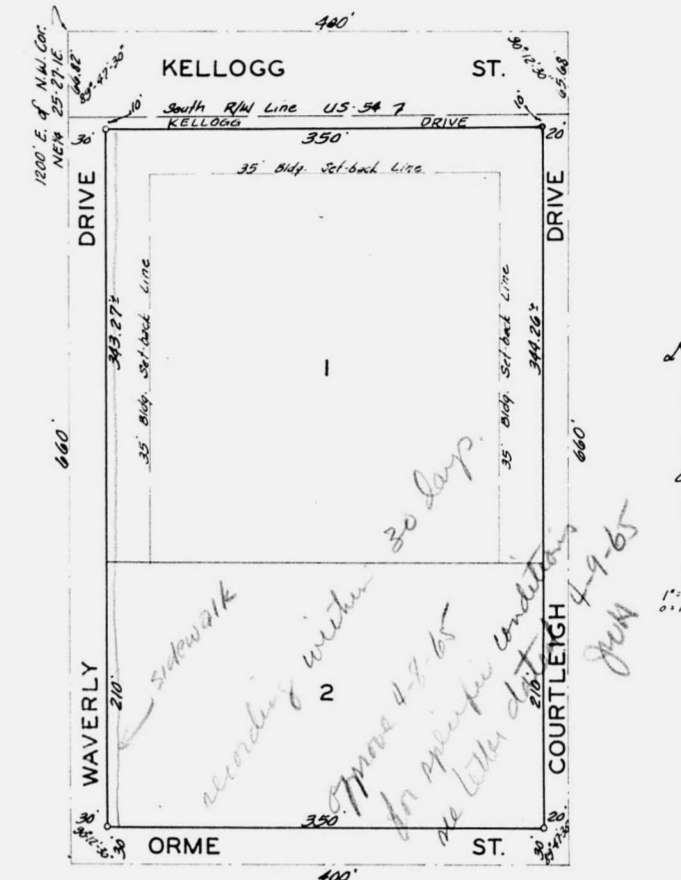
Secretary

State of Kansas) s.s. Be it remembered that on this _____ day of _____, 1965, before me a notary public in aforesaid county and state came Gerald B. Maloney, President and Lawrence Weigand, Secretary of Universal Service Stations Inc. and Carl V. Maloney and Honore B. Maloney his wife, and John Lawrence Weigand, a single person, to me known to be the same persons who executed the foregoing instrument of writing and duly acknowledged the execution of the same. In testimony whereof, I have hereunto set my hand and affixed my notarial seal the day and year above written.

Notary Public
My Commission Expires _____

State of Kansas) s.s. This is to certify that this plat was filed for record in the office of the Register of Deeds, this _____ day of _____, 1965, at _____ o'clock _____ M; and is duly recorded.

Register of Deeds



This plat of "UNIVERSALS FIRST ADDITION" to Wichita, Kansas, has been approved by the Wichita, Sedgewick County Metropolitan Area Planning Commission, Wichita, Kansas, and is hereby transmitted to the Board of Commissioners of the City of Wichita, Kansas, with the recommendation that such plat be approved as proposed.

Dated this _____ day of _____, 1965.
Wichita, Sedgewick County Metropolitan Area Planning Commission

Chairman

Secretary

Approved by the Board of City Commissioners this _____ day of _____, 1965.

Mayor

City Clerk

Approved by the Board of County Commissioners this _____ day of _____, 1965.

Chairman

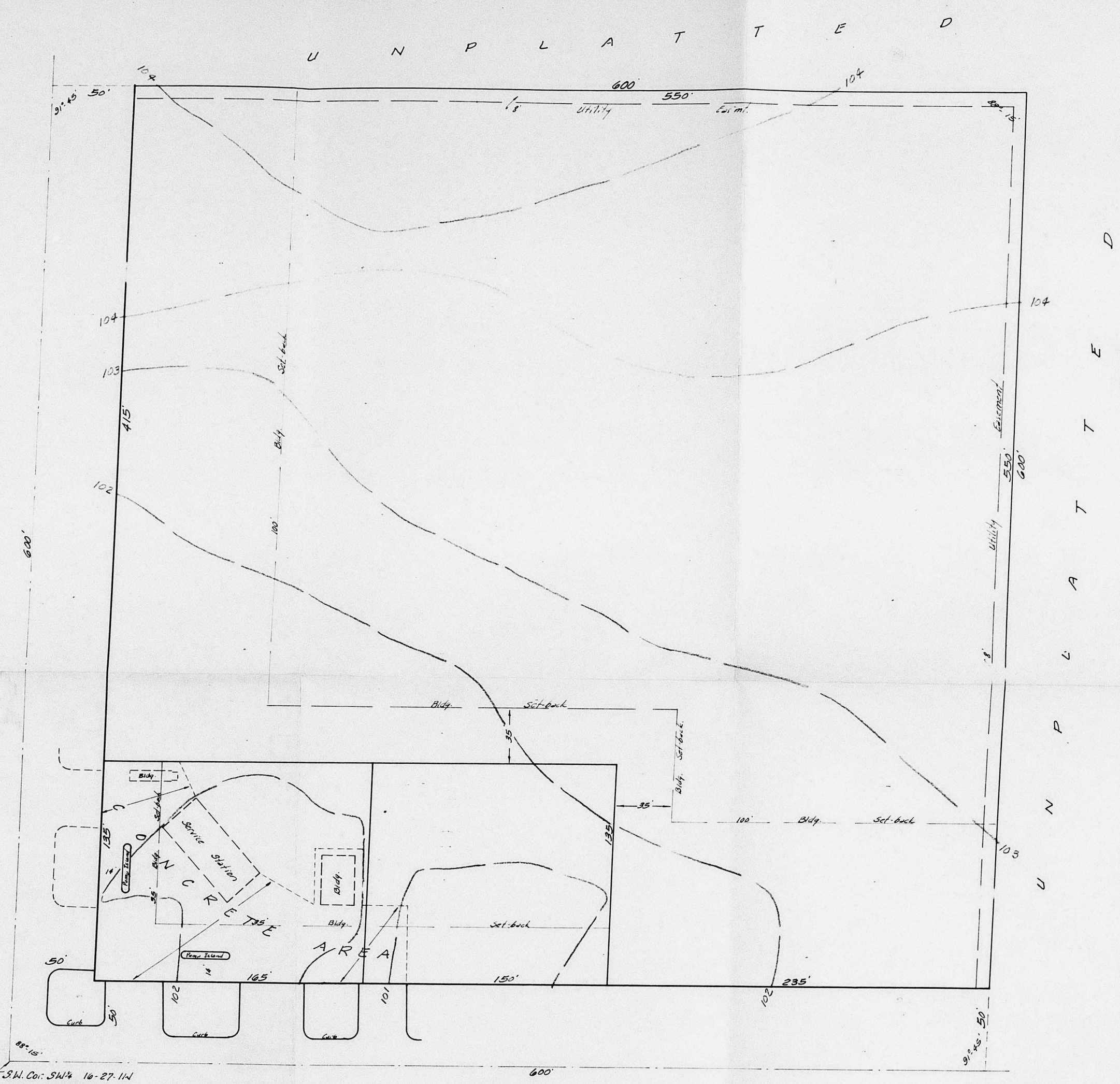
Commissioner

Commissioner

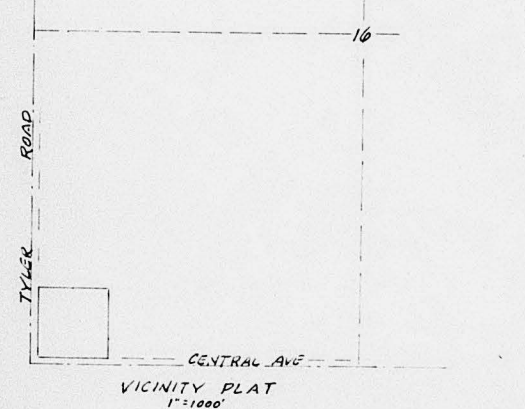
County Clerk

Entered on transfer record this _____ day of _____, 1965.

County Clerk



OFFICE COPY
 DO NOT REMOVE
 REVISED PRELIMINARY PLAT
 PRELIMINARY PLAT
 TYLER ACRES 2ND ADDITION
 SD 65-89 E. T. NEVILLE
 REVISED COPY



Daughman Co. 3-3-62