

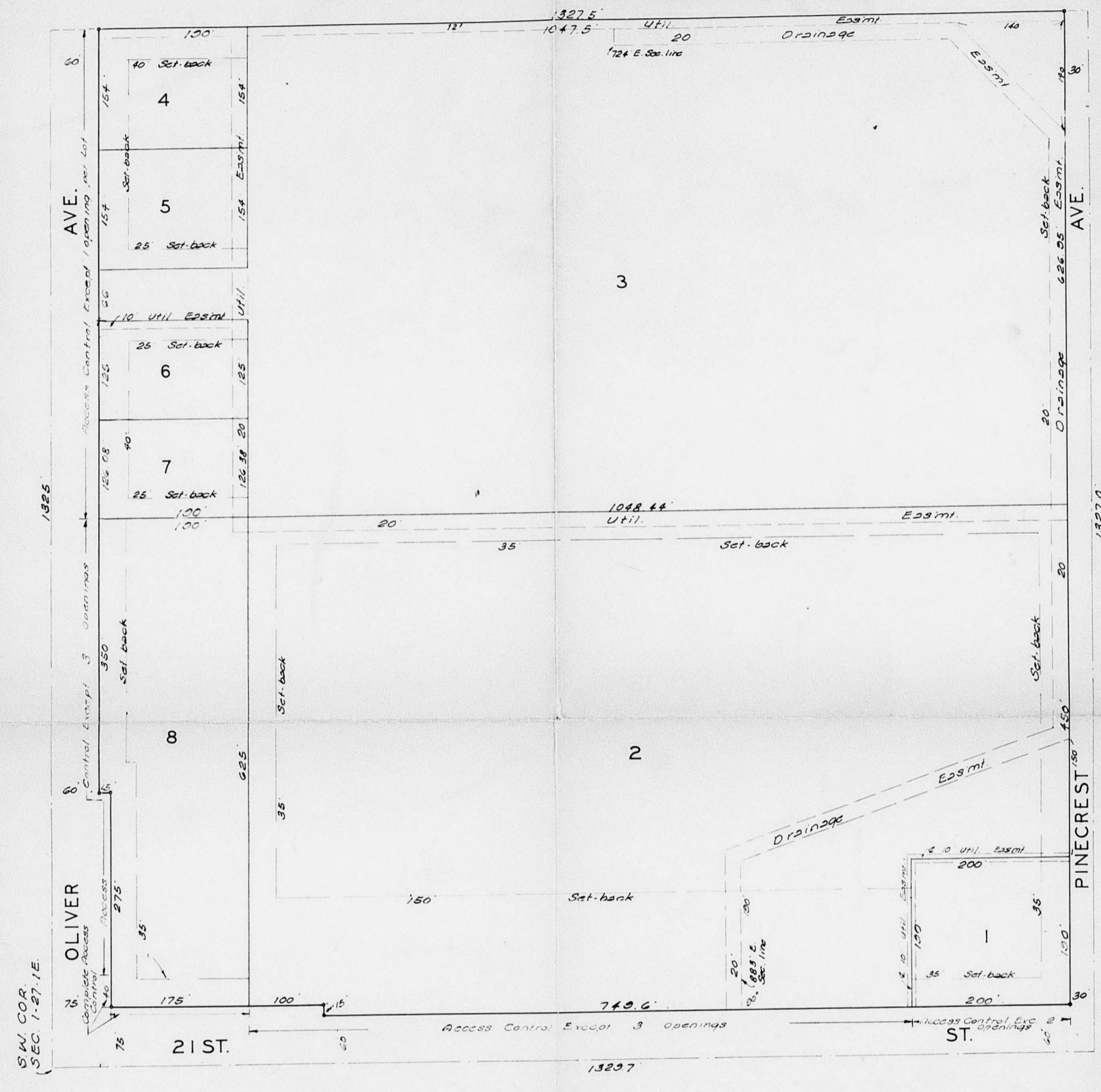
u

510 69-102

UNIVERSITY GARDENS

FINAL PLAT WICHITA KANSAS

REVISED COPY



State of Kansas) s.s. This is to certify that this plat was filed for record in the office of the Register of Deeds this day of 1970, at o'clock M, and is duly recorded.

 John Hale Register of Deeds
 Robert S. Stewart Deputy

State of Kansas) s.s. Be it remembered that on this day of 1970 before me a notary public in and for the State of Kansas came Lodeska Marie Paulcy to me known to be the same person who executed the foregoing instrument of writing and duly acknowledged the execution of the same. In testimony whereof, I have hereunto set my hand and affixed my notarial seal the day and year above written.

 Notary Public
 My Comm. Exp. _____

The dedications shown on this plat accepted by the Board of Commissioners, Sedgewick County, Kansas, this day of 1970.

 Edith Bush Chairman
 Elmer Kahan Commissioner
 Tom Scott Commissioner
 Marie Watson County Clerk

Entered on transfer record this day of 1970

 Marie Watson County Clerk

I, Lodeska Marie Paulcy, holder of a mortgage on the above described property do hereby consent to the plat of "UNIVERSITY GARDENS" Wichita, Kansas.

 Lodeska Marie Paulcy

State of Kansas) s.s. We, Baughman Company Surveyors in Sedgewick County and State do hereby certify that we have surveyed and platted "UNIVERSITY GARDENS" Wichita, Kansas and that the accompanying plat is a true and correct exhibit of the property surveyed described as follows: The S.W. 1/4 of S.W. 14 of Sec. 1, Twp. 27-S., R. 1-E. Sedgewick County, Kansas.

 Surveyor

Know all men by these presents that we University Mall Inc. a corporation by Millard R. Seidin, President and Stanley Silverman, Secretary have caused the land described in the surveyors certificate to be platted into lots, avenues and a street to be known as "UNIVERSITY GARDENS" Wichita, Kansas. Easements are hereby granted as indicated for the construction and maintenance of all public utilities and where noted, for drainage. The street and avenues are hereby dedicated to and for the use of the public. All egress rights of access to 21st St. over and across the south lines of Lots 1-2 & 8 and to or from Oliver Ave. over and across the west lines of Lots 3-4-5-6-7 & 8 are hereby granted the City of Wichita, provided however that Lot 1 shall have access to 21st St. at 2 points; Lot 2 shall have access to 21st St. at 3 points; Lot 8 shall have access to Oliver at 3 points on all but the south 40 feet thereof; Lots 3-4-5-6-7 & 8 shall have access to Oliver at 1 point per lot. All points of access to be determined by the City Engineer of the City of Wichita.

 University Mall Inc.
 President
 Secretary

State of Nebraska) s.s. Be it remembered that on this day of 1970, before me a notary public in Sedgewick County and State came Millard R. Seidin, President and Stanley Silverman, Secretary of University Mall Inc. to me known to be the same persons who executed the foregoing instrument of writing and duly acknowledged the execution of the same. In testimony whereof, I have hereunto set my hand and affixed my notarial seal the day and year above written.

 Notary Public
 My Comm. Exp. _____

This plat of "UNIVERSITY GARDENS" Wichita, Kansas has been submitted to and approved by the Wichita-Sedgewick County Metropolitan Area Planning Commission, Wichita, Kansas. Dated this day of 1970.

 Chairman
 Secretary

The dedications shown on this plat accepted by the Board of Commissioners of the City of Wichita, Kansas, this day of 1970.

 Mayor
 City Clerk

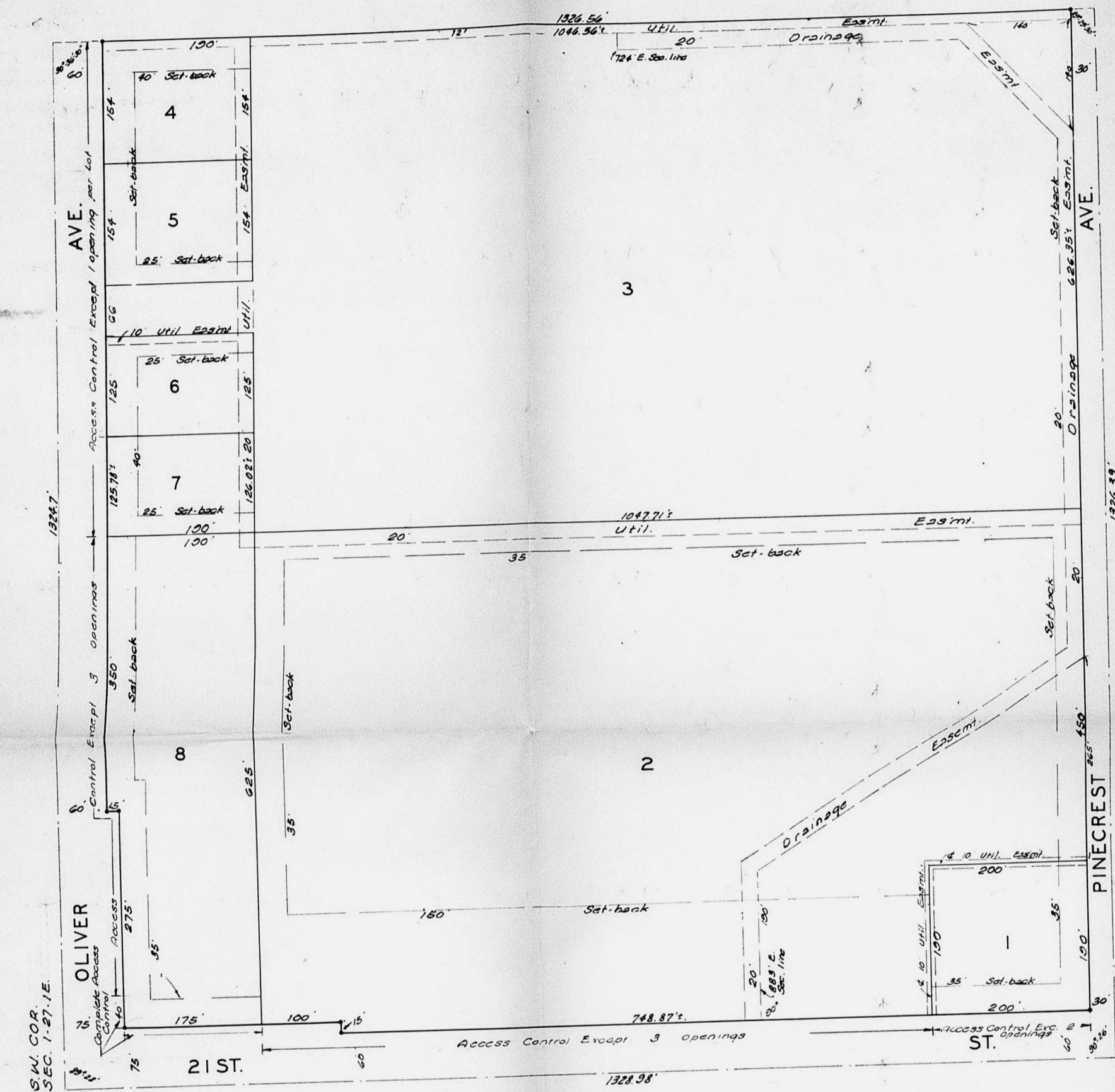
510 69-102

COPY
DEAD - FILE

APPROVED FOR RECORDING
RECORDED ON 3-10-71

UNIVERSITY GARDENS

WICHITA KANSAS



State of Kansas) s.s. We, Baughman Company
Surveyors in Sedgewick County and state do
hereby certify that we have surveyed and
platted "UNIVERSITY GARDENS" Wichita,
Kansas and that the accompanying plat
is a true and correct exhibit of the prop-
erty surveyed described as follows: The
S.W. 1/4 of Sec. 1, Twp 27-S, R-1-E
Baughman Company

Know all men by these presents that we University Mall Inc. a corporation by Millard R. Seldin, President and Stanley Silverman, Secretary have caused the land described in the surveyors certificate to be platted into lots, avenues and a street to be known as "UNIVERSITY GARDEN" Wichita, Kansas. Easements are hereby granted as indicated for the construction and maintenance of all public utilities and where noted, for drainage. The street and avenues are hereby dedicated to and for the use of the public. All abutters rights of access to 21st St. over and across the south lines of Lots 1, 2, 6 & 8 and to or from Oliver Ave. over and across the west lines of Lots 3, 4, 5, 6, 7 & 8 are hereby granted the City of Wichita, provided however that Lot 1 shall have access to 21st St. at 3 points, Lot 2 shall have access to 21st St. at 3 points, Lot 3 shall have access to Oliver at 3 points on the south, 40 feet thereof; Lots 4, 5, 6 & 7 shall have access to Oliver at 1 point per Lot, all points of access to be determined by the City Engineer of the City of Wichita.

State of Nebraska) s.s. Be it remembered that on this day of May, 1970, before me a notary public in Sedgewick County and state came Millard R. Seldin, President and Stanley Silverman, Secretary of University Mall Inc. to me known to be the same persons who executed the foregoing instrument of platting and duly acknowledged the execution of the same. In testimony whereof I have hereunto set my hand and affixed my notarial seal the day and year above written.

State of Kansas) s.s. This is to certify that this plat was filed for record in the office of the Register of Deeds this day of March, 1971, at o'clock P.M. and is duly recorded.

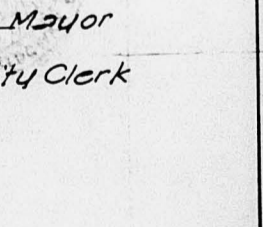
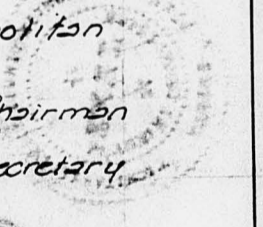
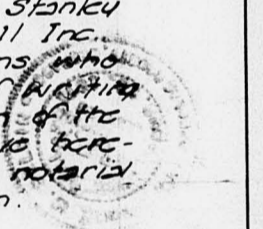
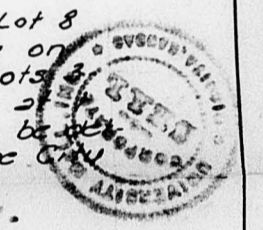
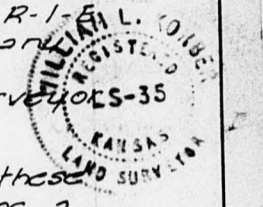
The dedications shown on this plat accepted by the Board of Commissioners, Sedgewick County, Kansas, this day of March, 1971.

State of Kansas) s.s. Be it remembered that on this day of March, 1970, before me a notary public in Sedgewick County and state came Lodaska Marie Paulcy to me known to be the same person who executed the foregoing instrument of writing and duly acknowledged the execution of the same. In testimony whereof I have hereunto set my hand and affixed my notarial seal the day and year above written.

Entered on transfer record this day of March, 1970.

This plat of "UNIVERSITY GARDENS" Wichita, Kansas has been submitted to and approved by the Wichita-Sedgewick County Metropolitan Area Planning Commission, Wichita, Kansas, dated this day of February, 1971.

The dedications shown on this plat accepted by the Board of Commissioners of the City of Wichita, Kansas, this day of March, 1971.

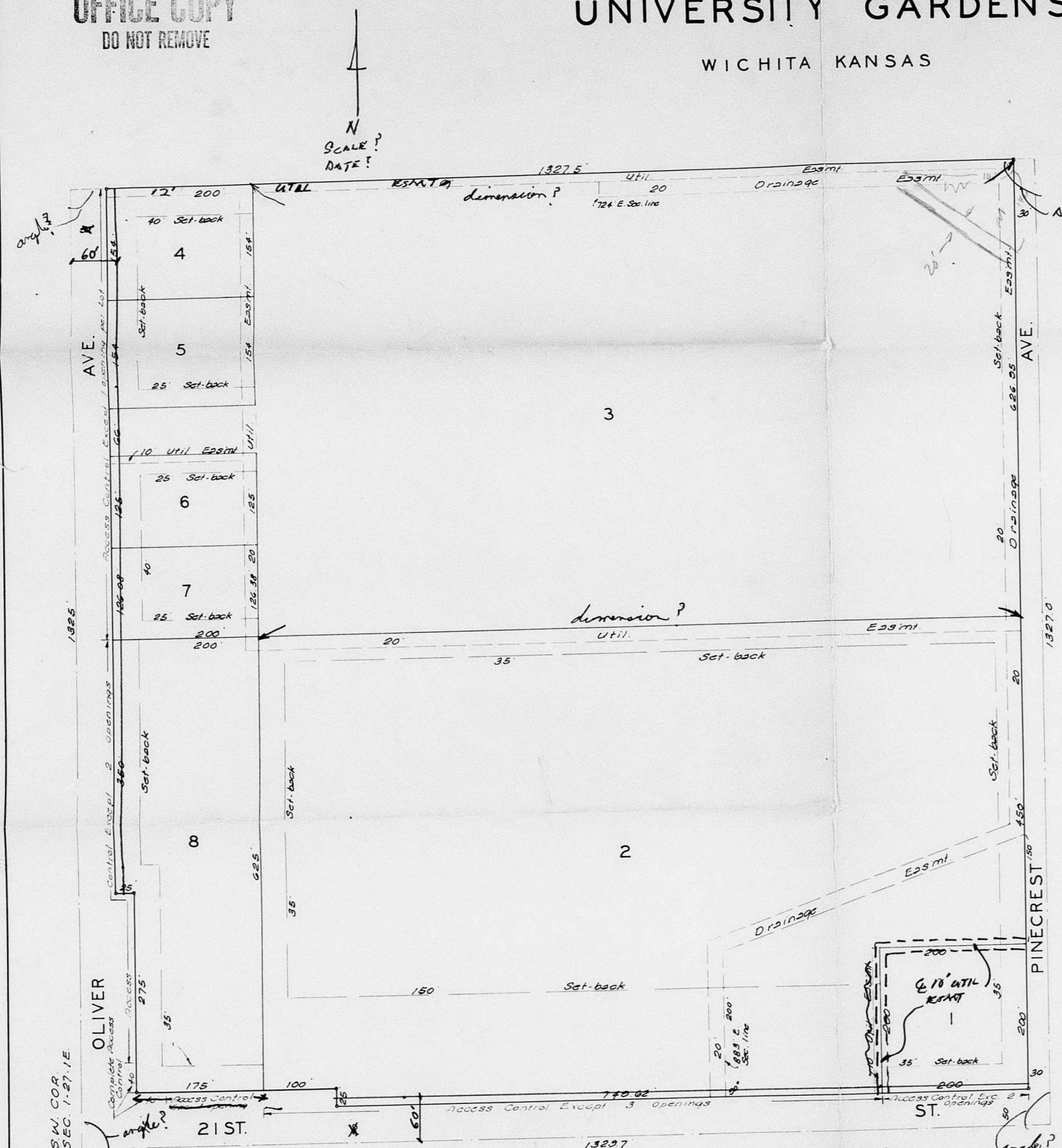


FINAL PLAT
OFFICE COPY
DO NOT REMOVE

S/D 69-102

UNIVERSITY GARDENS

WICHITA KANSAS



State of Kansas, ss. We Baughman Company Surveyors in and for said county and state do hereby certify that we have surveyed and plotted UNIVERSITY GARDENS, Wichita, Kansas and that the accompanying plat is a true and correct exhibit of the property surveyed described as follows: The S.W. 1/4 of S.W. 1/4 of Sec 1, Twp 27-S, R-1-E, Baughman Company

Surveyor

Know all men by these presents that we University Mall Inc. a corporation by Millard R. Seldin, President and Stanley Silverman, Secretary have caused the land described in the surveyors certificate to be platted into lots, avenues and a street to be known as UNIVERSITY GARDENS, Wichita, Kansas. Easements are hereby granted as indicated for the construction and maintenance of all public utilities and where noted, for drainage. The street and avenues are hereby dedicated to and for the use of the public. All abutting rights of access to 21st St. over and across the south lines of Lots 1, 2 & 8 and to or from Oliver Ave over and across the west lines of Lots 3, 4, 5, 6, 7 & 8 are hereby granted the City of Wichita, provided however that Lot 1 shall have access to 21st St. at 2 points; Lot 2 shall have access to 21st St. at 3 points; Lot 8 shall have access to 21st St. at 1 point on all but the west 40 feet thereof; Lot 8 shall have access to Oliver at 2 points on all but the south 40 feet thereof; Lots 3, 4, 5, 6 & 7 shall have access to Oliver at 1 point per Lot, all points of access to be determined by the City Engineer of the City of Wichita.

University Mall Inc.

President

Secretary

State of Nebraska, ss. Be it remembered that on this _____ day of _____, 1969, before me a notary public in and for said county and state came Millard R. Seldin, President and Stanley Silverman, Secretary of University Mall Inc. to me known to be the same persons who executed the foregoing instrument of writing and duly acknowledged the execution of the same. In testimony whereof I have hereunto set my hand and affixed my notarial seal the day and year above written.

Notary Public

- S/D 69-102
1-9-70 - Order for plat. 5 310 meeting
2-5-70 - Order for plat. 5 310 meeting
Seagovick County, ss. This is to certify that this plat was filed for record in the office of the Register of Deeds this day of _____, 1969, at _____ o'clock
3-5-70, and is duly recorded.
- approve subject to:
1. Indicate correct data on plat, to refer to 1970
2. Indicate proper corner angles
3. Indicate proper narrow easels, date and origin description.
4. Indicate how plat is to be recorded in the office of the Register of Deeds
5. Indicate how plat is to be recorded in the office of the Register of Deeds
6. Indicate how plat is to be recorded in the office of the Register of Deeds
7. Indicate how plat is to be recorded in the office of the Register of Deeds
8. Indicate how plat is to be recorded in the office of the Register of Deeds

9. Install or guarantee installation of sidewalks on Oliver, 21st St. and Pinecrest.
10. Contact engineering and make arrangements for the submission of an application to the Board of Comm. for the plat.
11. Obtain necessary permits for the plat.
12. Obtain necessary permits for the plat.
13. Increase the 21st St. plat at 2.9-W for Oliver, 21st St. to 60' in width and increase the 21st St. plat in its east and north sides of road street.
14. Contact engineering relative to a change in geometrics of the drainage easement across the plat.
15. Amend the survey controls along the road, which of the plat may be amended to the plat.

Note: see letter dated 3-6-70
CLN