

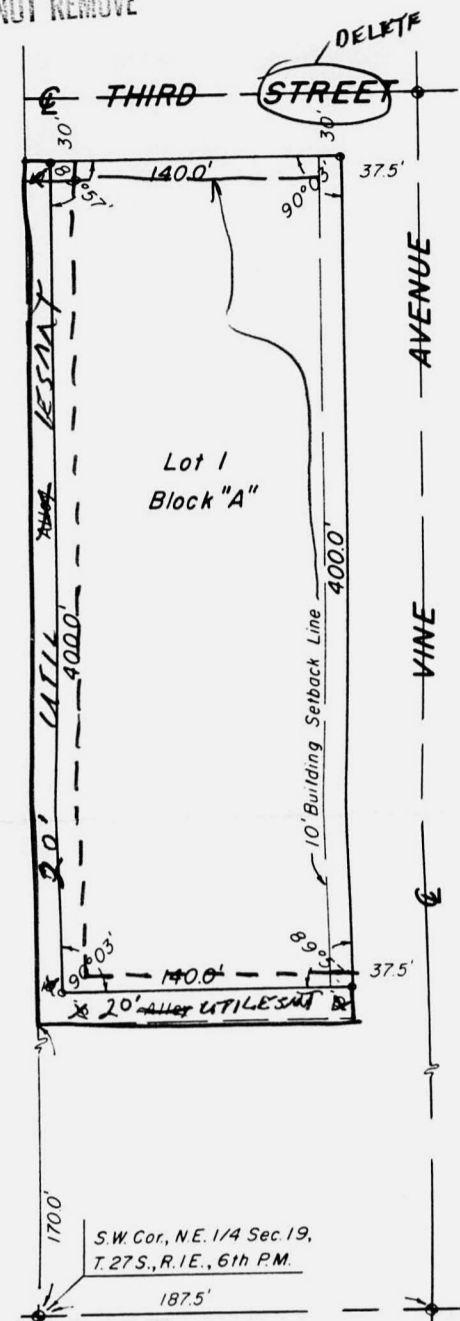
D

FINAL PLAT  
OFFICE COPY  
DO NOT REMOVE

510 71-19

### DUO BED FIRST ADDITION

TO WICHITA, SEDGWICK COUNTY, KANSAS



SCALE 1" = 60'  
○ = Iron  
● = Thumb

STATE OF KANSAS, COUNTY OF SEDGWICK, SS:

I, Don C. Moehring, II, a Civil Engineer in said State and County do hereby certify that I have surveyed and platted "DUO BED FIRST ADDITION" to Wichita, Sedgwick County, Kansas, into a Lot and a Block, the same being accurately set forth on the accompanying plat and described as a Replat of Lots 50, 52, 54, 56, 58, 60, 62, 64, 66, 68, 70, 72, 74, 76, 78 and 80 on Vine Avenue, in Dodge's Second Addition to Wichita, Kansas.

*Don C. Moehring II*  
Don C. Moehring, II April 13, 1971 Consulting Engineer

Know all men by these presents, that we the undersigned property owners of the land as above set forth in the Civil Engineer's Certificate, have caused the same to be surveyed and platted into a Lot and a Block, the same to be known as "DUO BED FIRST ADDITION" to Wichita, Sedgwick County, Kansas.

DUO BED CORPORATION

\_\_\_\_\_, Exec. Vice President

D. T. Armstrong \_\_\_\_\_, Treasurer

ATTEST: *Walter M. Jacobson*  
Walter M. Jacobson

STATE OF KANSAS, COUNTY OF SEDGWICK, SS:

Be it remembered that on this 13<sup>th</sup> day of April, 1971, before me, a Notary Public in and for said State and County, came DUO BED CORPORATION, by D. T. Armstrong, Executive Vice President, and Walter M. Jacobson, Treasurer, to me personally known to be the same persons who executed the foregoing instrument of writing and duly acknowledged the execution of same. In testimony whereof I have hereunto set my hand and affixed my notarial seal the day and year above written.

*Lorain Bodinger*  
Lorain Bodinger \_\_\_\_\_, Notary Public

My Commission Expires \_\_\_\_\_

- 510 71-19 approved subject to:
1. The plat being approved subject to the approval of the City Commission.
  2. Change the name of the Mayor as shown hereon.
  3. Delete the office (street) from the labeling of 3rd St.
  4. Amend the plat to incorporate the north south and east-west alleys as a part of plat 1. In lieu of said alleys a utility easement shall be indicated along the west and south lines of the plat.
  5. Indicate a 10' building setback from 3rd.
  6. Install or guarantee the construction of a sidewalk adjacent to the south side of 3rd, the total estimated construction cost to be the amount of \$450.
  7. Recording in 30 days.
- Note: see letter dated 4-14-71

This plat of DUO BED FIRST ADDITION has been submitted to and approved by the Wichita-Sedgwick County Metropolitan Area Planning Commission, Wichita, Kansas.

Dated this \_\_\_\_\_ day of \_\_\_\_\_, 1971.

WICHITA-SEDGWICK COUNTY METROPOLITAN AREA PLANNING COMMISSION.

*Floyd R. Souders*  
Floyd R. Souders \_\_\_\_\_, Chairman

*Robert A. Lakin*  
Robert A. Lakin \_\_\_\_\_, Secretary

This plat approved and all dedications shown hereon, if any, accepted by the City Commission of the City of Wichita, Kansas, this \_\_\_\_\_ day of \_\_\_\_\_, 1971.

\_\_\_\_\_, Mayor

*Jac H. Greene*  
Jac H. Greene \_\_\_\_\_, City Clerk

*Ralph C. Eberly*  
Ralph C. Eberly \_\_\_\_\_, Deputy

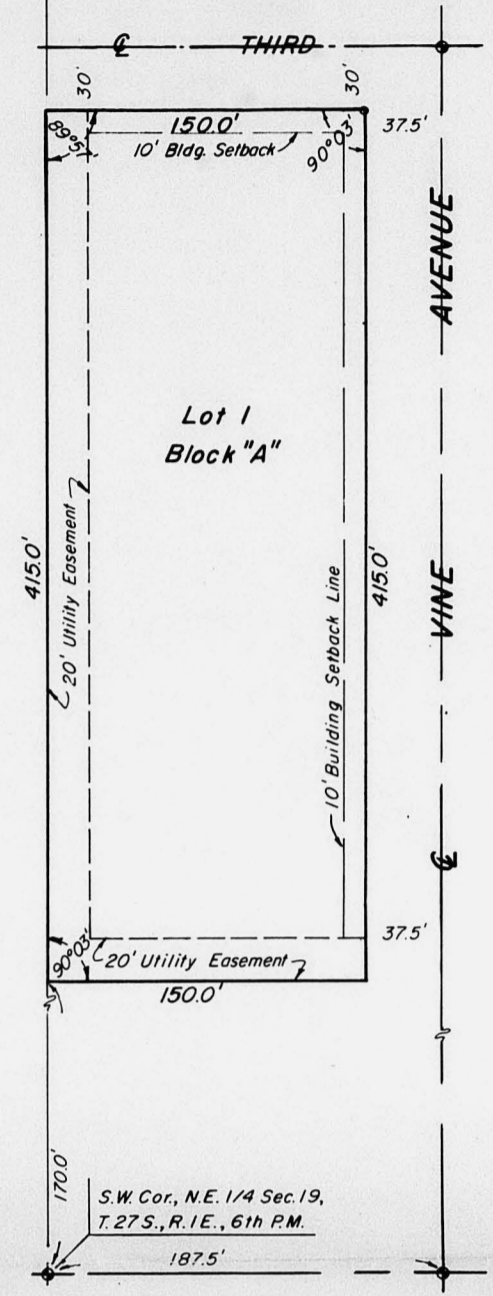
COPY  
DEAD - FILE

510 71-19

### DUO BED FIRST ADDITION

APPROVED FOR RECORDING TO WICHITA, SEDGWICK COUNTY, KANSAS

RECORDED ON 5-26-71



SCALE 1" = 60'  
○ = Iron  
● = Thumb

STATE OF KANSAS, COUNTY OF SEDGWICK, SS:

I, Don C. Moehring, II, a Civil Engineer in said State and County do hereby certify that I have surveyed and platted "DUO BED FIRST ADDITION" to Wichita, Sedgwick County, Kansas, into a Lot and a Block, the same being accurately set forth on the accompanying plat and described as a Replat of Lots 50, 52, 54, 56, 58, 60, 62, 64, 66, 68, 70, 72, 74, 76, 78 and 80 on Vine Avenue, in Dodge's Second Addition to Wichita, Kansas.

*Don C. Moehring II*  
Don C. Moehring, II April 13, 1971 Consulting Engineer

Know all men by these presents, that we the undersigned property owners of the land as above set forth in the Civil Engineer's Certificate, have caused the same to be surveyed and platted into a Lot and a Block, the same to be known as "DUO BED FIRST ADDITION" to Wichita, Sedgwick County, Kansas. Easements for the construction and maintenance of Public Utilities, as indicated on the accompanying plat, are hereby granted.

DUO BED CORPORATION

*D. T. Armstrong*  
D. T. Armstrong \_\_\_\_\_, Exec. Vice President

ATTEST: *Walter M. Jacobson*  
Walter M. Jacobson \_\_\_\_\_, Treasurer

STATE OF KANSAS, COUNTY OF SEDGWICK, SS:

Be it remembered that on this 13<sup>th</sup> day of April, 1971, before me, a Notary Public in and for said State and County, came DUO BED CORPORATION, by D. T. Armstrong, Executive Vice President, and Walter M. Jacobson, Treasurer, to me personally known to be the same persons who executed the foregoing instrument of writing and duly acknowledged the execution of same. In testimony whereof I have hereunto set my hand and affixed my notarial seal the day and year above written.

*Lorain Bodinger*  
Lorain Bodinger \_\_\_\_\_, Notary Public

My Commission Expires 5-28-73

This plat of DUO BED FIRST ADDITION has been submitted to and approved by the Wichita-Sedgwick County Metropolitan Area Planning Commission, Wichita, Kansas.

Dated this 22<sup>nd</sup> day of April, 1971.

WICHITA-SEDGWICK COUNTY METROPOLITAN AREA PLANNING COMMISSION.

*Floyd R. Souders*  
Floyd R. Souders \_\_\_\_\_, Chairman

*Robert A. Lakin*  
Robert A. Lakin \_\_\_\_\_, Secretary

This plat approved and all dedications shown hereon, if any, accepted by the City Commission of the City of Wichita, Kansas, this 13<sup>th</sup> day of April, 1971.

*Jack R. Greene*  
Jack R. Greene \_\_\_\_\_, Mayor

*Ralph C. Eberly*  
Ralph C. Eberly \_\_\_\_\_, City Clerk

We, the "GUARANTEE RESERVE LIFE INSURANCE COMPANY" Mortgagee of the above described property, do hereby consent to the plat of "DUO BED FIRST ADDITION" to Wichita, Sedgwick County, Kansas.

*Richard Seidel*  
Richard Seidel \_\_\_\_\_, Vice President-Treasurer

*Jerome F. Kutak*  
Jerome F. Kutak \_\_\_\_\_, Chairman Of The Board

This plat approved and all dedications shown hereon, if any, accepted by the Board of County Commissioners of Sedgwick County, Kansas, this \_\_\_\_\_ day of \_\_\_\_\_, 1971.

*Elnor S. Peters*  
Elnor S. Peters \_\_\_\_\_, Chairman

*Earl E. Rush*  
Earl E. Rush \_\_\_\_\_, Commissioner

*Tom Scott*  
Tom Scott \_\_\_\_\_, Commissioner

ATTEST: \_\_\_\_\_, County Clerk

*Marie Warden*  
Marie Warden \_\_\_\_\_, County Clerk

STATE OF KANSAS, COUNTY OF SEDGWICK, SS:

This is to certify that this instrument was filed for record in the Register of Deeds Office, at \_\_\_\_\_, on the \_\_\_\_\_ day of \_\_\_\_\_, 1971.

*John Hale*  
John Hale \_\_\_\_\_, Register of Deeds

*Pearl B. Gilbert*  
Pearl B. Gilbert \_\_\_\_\_, Deputy

Entered on Transfer Record, this \_\_\_\_\_ day of \_\_\_\_\_, 1971.

*Marie Warden*  
Marie Warden \_\_\_\_\_, County Clerk

STATE OF INDIANA, COUNTY OF LAKE, SS:

Be it remembered that on this 17<sup>th</sup> day of May, 1971, before me, a Notary Public in and for said State and County, came GUARANTEE RESERVE LIFE INSURANCE COMPANY, by Richard Seidel, Vice President-Treasurer, and Jerome F. Kutak, Chairman Of The Board, to me personally known to be the same persons who executed the foregoing instrument of writing and duly acknowledged the execution of same. In testimony whereof I have hereunto set my hand and affixed my notarial seal the day and year above written.

*Dwen McGinty*  
Dwen McGinty \_\_\_\_\_, Notary Public

My Commission Expires Jan 21, 1975

S/D 71-19

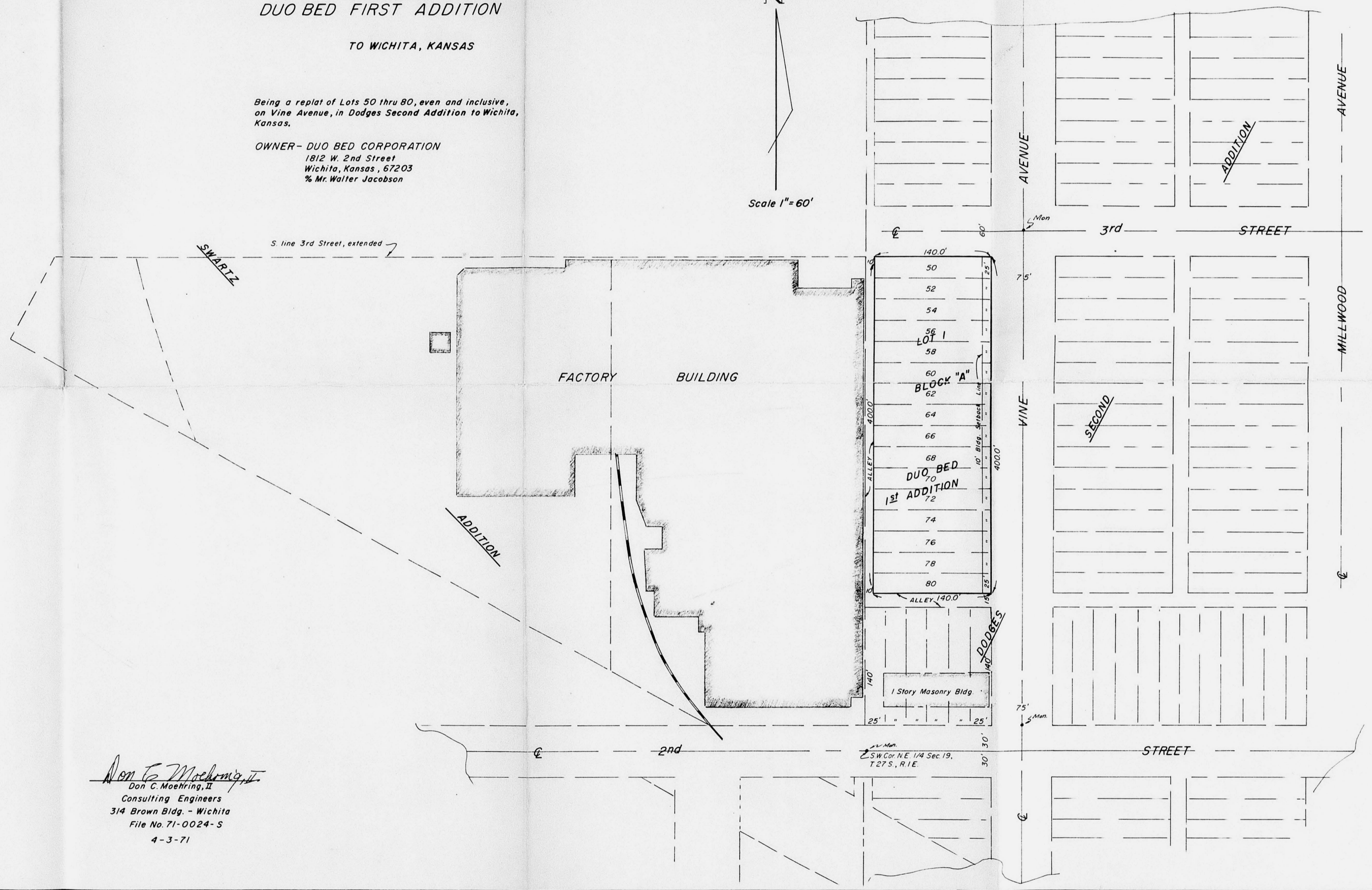
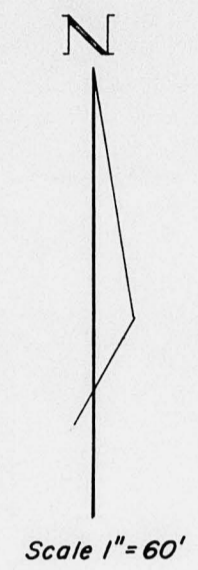
OFFICE COPY  
DO NOT REMOVE

SKETCH PLAT  
OF

DUO BED FIRST ADDITION  
TO WICHITA, KANSAS

Being a replat of Lots 50 thru 80, even and inclusive,  
on Vine Avenue, in Dodges Second Addition to Wichita,  
Kansas.

OWNER - DUO BED CORPORATION  
1812 W. 2nd Street  
Wichita, Kansas, 67203  
% Mr. Walter Jacobson



*Don E. Mackay, Jr.*  
Don E. Mackay, Jr.  
Consulting Engineers  
314 Brown Bldg. - Wichita  
File No. 71-0024-S  
4-3-71