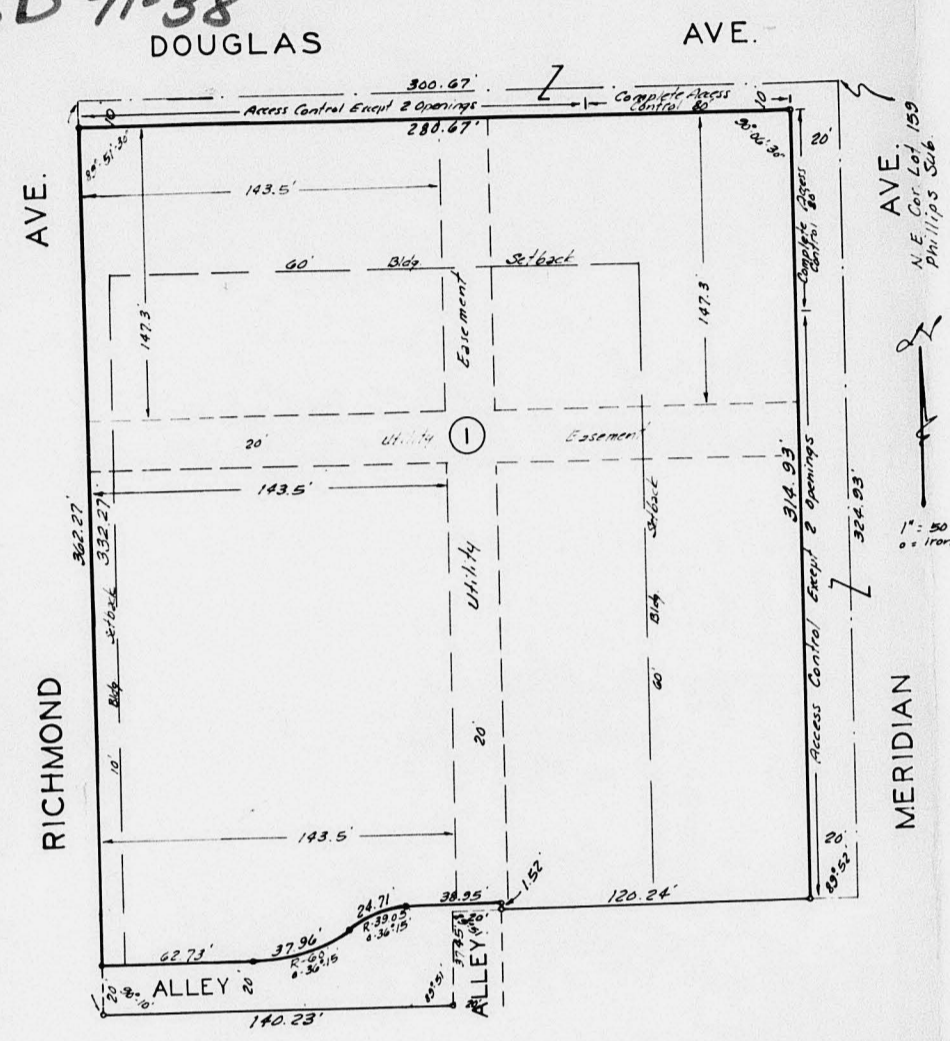


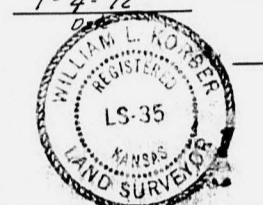
D

COPY
DEAD - FILE
APPROVED FOR RECORDING
RECORDED ON 4-3-72
SD 71-38
DOUGLAS

DILLON 4TH. ADDITION
WICHITA, KANSAS.



State of Kansas) s.s. We, Baughman Company, Surveyors
Sedwick County) s.s. do hereby certify that we
in aforesaid county and state do hereby certify that we
have surveyed and plotted "DILLON 4TH ADDITION"
Wichita, Kansas, and that the accompanying plat is
a true and correct exhibit of the property surveyed
described as and being a plat of lots 148, 149, 150, 151, 152, 153,
154, 155, 156, 157, 158, 159 on Douglas, Phillips Sub. Division
of Block 9 in Smithsons Addition to Wichita, Kansas,
and the N^{1/2} of Alley adjacent to said lots, Lot 8,
Smithsons Addition to Wichita, Kansas, and the
S^{1/2} of Alley adjacent to said lots, and Lots 12 and
14 on Meridian and Lots 11, 13, 15 and the N^{1/2} of Lot 17,
on Phillips new Richmond, Royal's Subdivision of
lots 3, 5, 7, 12, 13, and 14 in Smithsons Addition to
Wichita, Kansas, said alley being vacated by virtue of
K.S.A. 1970 Supplement 12-512 (a)
Baughman Company
Surveyors



William L. Rorer Surveyor
William L. Rorer

Know all men by these presents
that we Dillon Real Estate Co. Inc. a corporation by
Richard W. Dillon, Vice-President and Charles M. Dillon,
Secretary and Grace M. Luce a widow, and Dorothy
Y. Hayes and Roy C. Hayes, her husband and Belle
Koop and Waldo E. Koop, her husband, have caused
the land described in the surveyor's certificate to be
platted into a lot, streets and alley to be known as
"DILLON 4TH ADDITION" Wichita, Kansas. Easements
are hereby granted as indicated for the construction
and maintenance of all public utilities. The streets
and alley are hereby dedicated to and for the use of
the public. All abutters rights of access to or from
Douglas over and across the north line of Lot 1, and
to or from Meridian over and across the east line of
Lot 1 are hereby granted to the City of Wichita.
Provided however that Lot 1 shall have access to the
Douglas at 2 points exclusive of the east 80 feet
thereof and Lot 1 shall have access to Meridian at
2 points exclusive of the north 80 feet thereof.

This plat of "DILLON 4TH ADDITION"
Wichita, Kansas, has been submitted to and approved by the
Wichita, Sedwick County Metropolitan Area Planning Commission
Wichita, Kansas, dated this 10th day of February, 1972.
Wichita, Sedwick County Metropolitan Area Planning Commission

Robert C. Lohrey Vice Chairman
Robert A. Lohrey Secretary

This plat approved and all dedications
shown hereon accepted by the Board of Commissioners
of the City of Wichita, Kansas, this 10th day of
March, 1972.

Jack H. Boring Mayor
Robert C. Eberly City Clerk

This plat approved and all dedications
shown hereon accepted by the Board of Commissioners
of Sedwick County, Kansas, this 10th day of
March, 1972.

Earl Rahn Chairman
Edgar Peter Commissioner
Tom Smeal Commissioner
Marv Warden County Clerk

Entered on transfer record this
10th day of March, 1972.

Stanis Warden County Clerk

State of Kansas) s.s. This is to certify that this plat
Sedwick County) was filed for record in the office of the Register of
Deeds, this 10th day of March, 1972, at
o'clock 11 M; and is duly recorded.

John Hale Register of Deeds
Paul B. Gilbert Deputy

Dillon Real Estate Co. Inc.
Richard W. Dillon Vice-President
Charles M. Dillon Secretary

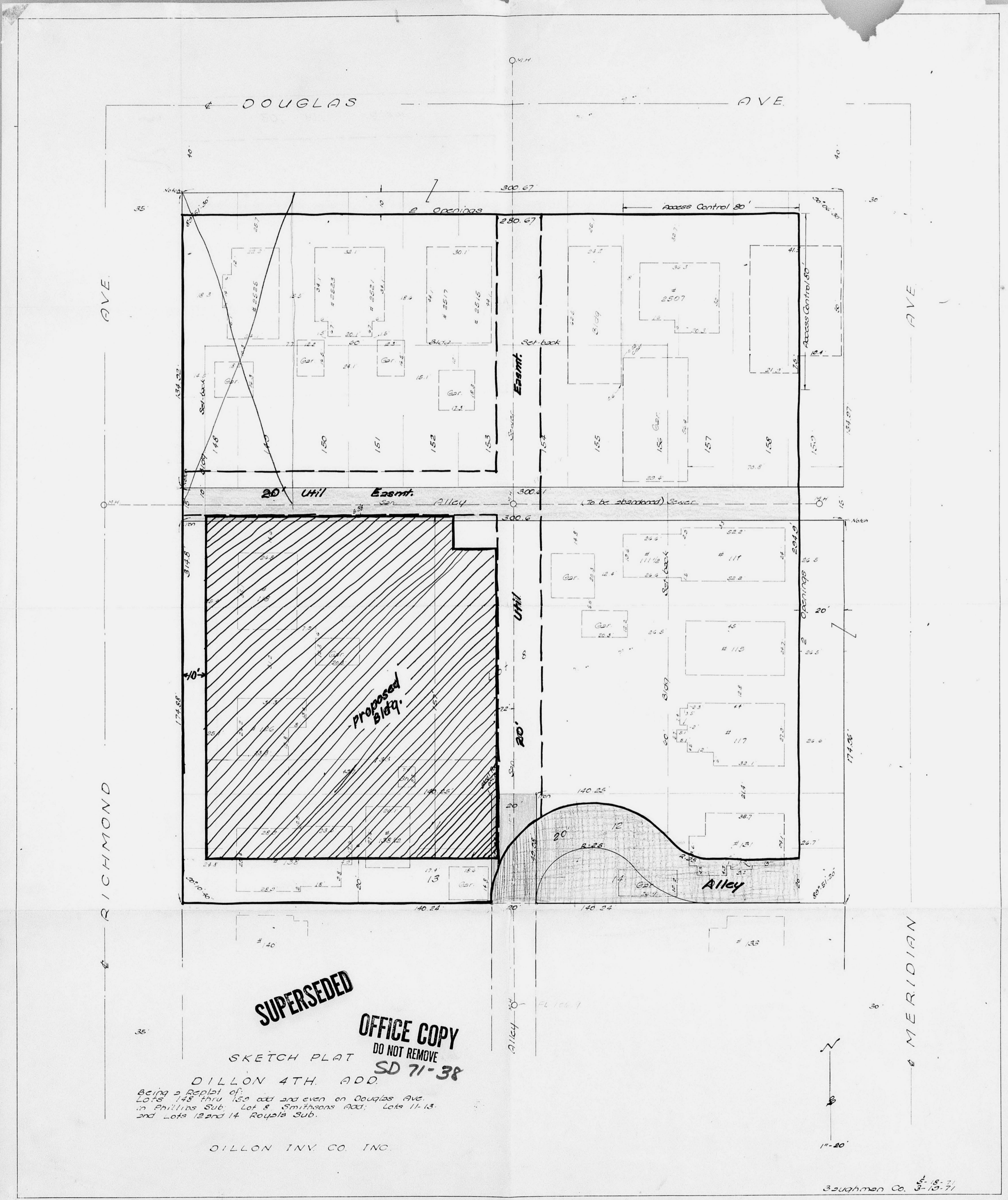
Grace M. Luce Grace M. Luce
Dorothy Y. Hayes Dorothy Y. Hayes
Roy C. Hayes Roy C. Hayes
Belle Koop Belle Koop
Waldo E. Koop Waldo E. Koop

State of Kansas) s.s. Be it remembered that on this 10th
Sedwick County) day of March, 1972, before me a notary public in
aforesaid county and state came Richard W. Dillon,
Vice-President and Paul W. Dillon, Secretary of Dillon
Real Estate Co. Inc. to me known to be the same persons
who executed the foregoing instrument of writing and
duly acknowledged the execution of the same. In test-
imony whereof I have hereunto set my hand and affixed
my notarial seal the day and year above written.

Diana L. Rostine Notary Public
DIANA L. ROSTINE
Notary Public
My Commission Expires 12/31/75

State of Kansas) s.s. Be it remembered that on this 10th
Sedwick County) day of March, 1972, before me a notary public
in aforesaid county and state came Grace M. Luce a
widow, Dorothy Y. Hayes and Roy C. Hayes, her husband
and Belle Koop and Waldo E. Koop, her husband to
me known to be the same persons who executed the
foregoing instrument of writing and duly acknowledged
the execution of the same. In testimony whereof I
have hereunto set my hand and affixed my notarial
seal the day and year above written.

Diana L. Rostine Notary Public
DIANA L. ROSTINE
Notary Public
My Commission Expires 12/31/75



SUPERSEDED
OFFICE COPY
 DO NOT REMOVE
 SKETCH PLAT SD 71-38

DILLON 4TH ADD.
 Being a replat of
 Lots 148 thru 150 odd and 200 even on Douglas Ave.
 in Phillips Sub. Lot 8 Smithsons 1901; Lots 11, 13
 and Lots 12 and 14 Reynolds Sub.

DILLON INV. CO. INC.

35ughmen Co. 3-10-71